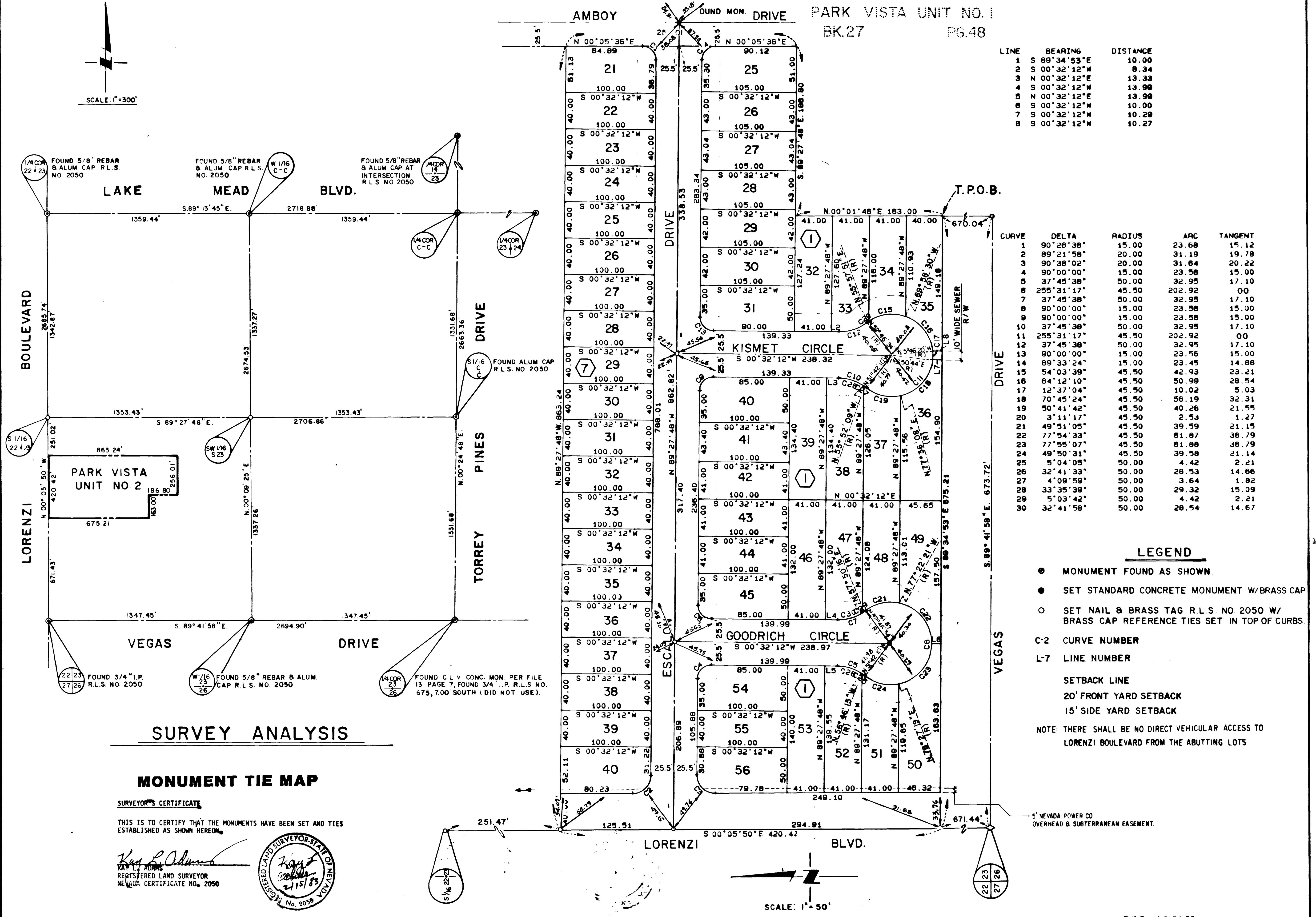
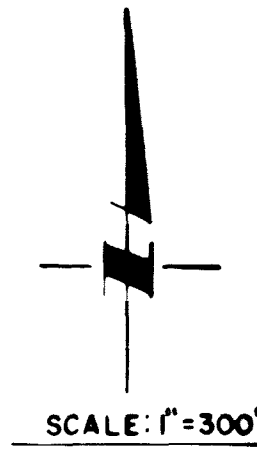


PARK VISTA UNIT NO. 2

A PORTION OF THE S.W. 1/4 OF SECTION 23, T. 20S., R. 60E., M.D.M.
CITY OF LAS VEGAS CLARK COUNTY, NEV.



LINE	BEARING	DISTANCE
1	S 89°34'53"E	10.00
2	S 00°32'12"W	8.34
3	N 00°32'12"E	13.33
4	S 00°32'12"W	13.98
5	N 00°32'12"E	13.98
6	S 00°32'12"W	10.00
7	S 00°32'12"W	10.28
8	S 00°32'12"W	10.27

CURVE	DELTA	RADIUS	ARC	TANGENT
1	90°26'36"	15.00	23.68	15.12
2	89°21'58"	20.00	31.19	19.78
3	90°36'02"	20.00	31.84	20.22
4	90°00'00"	15.00	23.58	15.00
5	37°45'38"	50.00	32.95	17.10
6	255°31'17"	45.50	202.92	00
7	37°45'38"	50.00	32.95	17.10
8	90°00'00"	15.00	23.58	15.00
9	90°00'00"	15.00	23.58	15.00
10	37°45'38"	50.00	32.95	17.10
11	255°31'17"	45.50	202.92	00
12	37°45'38"	50.00	32.95	17.10
13	90°00'00"	15.00	23.58	15.00
14	89°33'24"	15.00	23.45	14.88
15	54°03'39"	45.50	42.93	23.21
16	64°12'10"	45.50	50.99	28.54
17	12°37'04"	45.50	10.02	5.03
18	70°45'24"	45.50	56.19	32.31
19	50°41'42"	45.50	40.26	21.55
20	3°11'17"	45.50	2.53	1.27
21	49°51'05"	45.50	39.59	21.15
22	77°54'33"	45.50	61.87	36.79
23	77°55'07"	45.50	61.88	36.79
24	49°50'31"	45.50	39.58	21.14
25	5°04'05"	50.00	4.42	2.21
26	32°41'33"	50.00	28.53	14.66
27	4°09'59"	50.00	3.64	1.82
28	33°35'39"	50.00	29.32	15.09
29	5°03'42"	50.00	4.42	2.21
30	32°41'56"	50.00	28.54	14.67

LEGEND

- MONUMENT FOUND AS SHOWN.
- SET STANDARD CONCRETE MONUMENT W/BRASS CAP
- SET NAIL & BRASS TAG R.L.S. NO. 2050 W/ BRASS CAP REFERENCE TIES SET IN TOP OF CURBS.
- C-2 CURVE NUMBER
- L-7 LINE NUMBER
- SETBACK LINE
- 20' FRONT YARD SETBACK
- 15' SIDE YARD SETBACK
- NOTE: THERE SHALL BE NO DIRECT VEHICULAR ACCESS TO LORENZI BOULEVARD FROM THE ABUTTING LOTS

SURVEY ANALYSIS

MONUMENT TIE MAP

SURVEYOR'S CERTIFICATE
THIS IS TO CERTIFY THAT THE MONUMENTS HAVE BEEN SET AND TIES ESTABLISHED AS SHOWN HEREON.

Raymond J. Adams
REGISTERED LAND SURVEYOR
NEVADA CERTIFICATE NO. 2050

