

INSTALLATION OF DOUBLE CHECK DETECTOR ASSEMBLY (1) 4"
 THE DOUBLE CHECK DETECTOR ASSEMBLY SHALL BE INSTALLED IN ACCORDANCE WITH THE UDACS PLATE 208.
 ANY BLOCK WALL OR OTHER FENCE MATERIAL SHALL BE DESIGNED AND CONSTRUCTED AROUND THE OUTSIDE OF THE EASEMENT(S), SO AS TO ALLOW THE DISTRICT DIRECT ACCESS FROM THE ADJACENT RIGHT-OF-WAY.

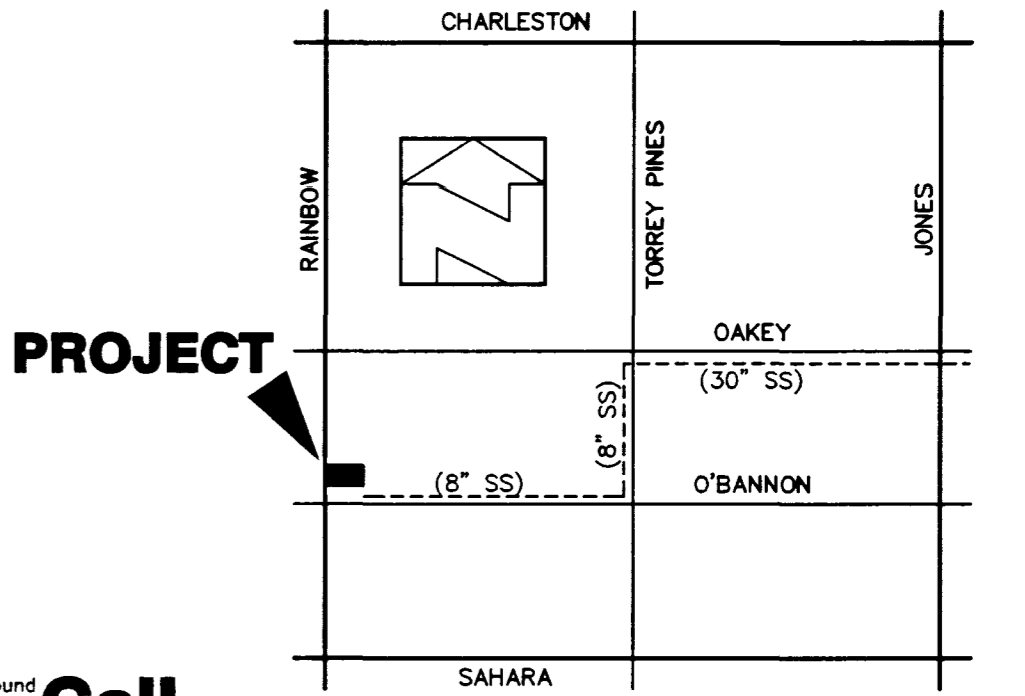
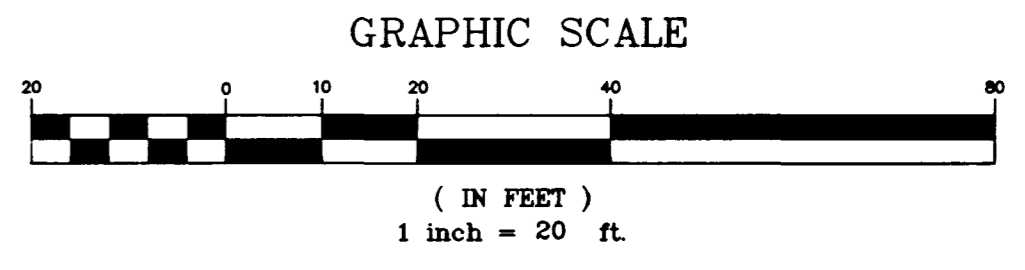
REDUCED PRESSURE PRINCIPLE ASSEMBLY (1) 1"
 APPROVED REDUCED PRESSURE PRINCIPLE ASSEMBLY(S) SHALL BE INSTALLED PER THE UDACS PLATE NO. 11A OR 11B. NO WATER SHALL BE TAKEN FROM A SERVICE REQUIRING BACKFLOW PREVENTION UNTIL THE REDUCED PRESSURE PRINCIPLE ASSEMBLY HAS BEEN SUCCESSFULLY TESTED BY THE LVWMD.
 ANY BLOCK WALL OR OTHER FENCE MATERIAL SHALL BE DESIGNED AND CONSTRUCTED AROUND THE OUTSIDE OF THE EASEMENT(S) TO ALLOW THE DISTRICT DIRECT ACCESS FROM THE ADJACENT RIGHT-OF-WAY.

NEVADA DEPARTMENT OF TRANSPORTATION (NDOT) PERMIT REQUIRED
 AN APPROVED NOTOT OCCUPANCY PERMIT SHALL BE OBTAINED PRIOR
 TO ANY CONSTRUCTION WITHIN THE NOTOT RIGHT-OF-WAY

- LAS VEGAS VALLEY WATER DISTRICT STANDARD NOTES**
- NO WORK SHALL BEGON UNTIL THE WATER PLANS HAVE BEEN RELEASED FOR CONSTRUCTION BY THE LVWMD. FOLLOWING WATER PLAN APPROVAL, 48 HOUR NOTICE SHALL BE GIVEN TO THE LVWMD COMMUNICATION SUPPORT CENTER (258-7171) PRIOR TO THE START OF CONSTRUCTION. NOTICE MUST BE GIVEN BY 2:00 P.M. THE BUSINESS DAY PRIOR TO A LVWMD INSPECTION.
 - ALL WORK SHALL CONFORM TO THE LVWMD'S STANDARD PLATES, DRAWINGS, AND SPECIFICATIONS AND THE UNIFORM DESIGN AND CONSTRUCTION STANDARDS FOR WATER DISTRIBUTION SYSTEMS (UDACS), LATEST EDITION.
 - ALL WORK, EXCEPT AS MODIFIED BY THESE PLANS OR BY NOTE 2, SHALL BE DONE IN ACCORDANCE WITH THE MOST CURRENT DRAFT OR EDITION OF THE UNIFORM STANDARD SPECIFICATIONS FOR PUBLIC WORKS CONSTRUCTION OFFSITE IMPROVEMENTS, CLARK COUNTY AREA.
 - A SINGLE PIPE MATERIAL SHALL BE USED THROUGHOUT THE PROJECT UNLESS OTHERWISE APPROVED BY THE LVWMD.
 - ALL SERVICE LATERALS TWO (2) IN DIAMETER AND SMALLER SHALL BE OF COPPER TUBING WITH LVWMD APPROVED SERVICE SADDLES.
 - ALL WATER METER BOXES SHALL BE LOCATED OUTSIDE OF DRIVEWAY AREAS.
 - ALL VALVES SHALL BE LOCATED OUTSIDE OF DRIVEWAYS, VALLEY AND CURB GUTTERS.
 - THE FOLLOWING REQUIREMENTS MUST BE MET IN THE EVENT A WATER LINE AND SANITARY SEWER OR STORM SEWER LINE CROSS:
 - POTABLE WATER SUPPLY QUALITY MATERIAL
 - ENCASEMENT, WITH FOUR (4) INCH CONCRETE (MINIMUM)
 - SLEEVING WITH POTABLE WATER SUPPLY QUALITY PIPE
 EACH PROVISION MUST EXTEND ALONG THE SANITARY OR STORM SEWER, ON EITHER SIDE OF THE MAIN, A MINIMUM 10 FOOT DISTANCE PERPENDICULAR TO THE WATER MAIN EXTERIOR.
 - WARNING TAPE SHALL BE REQUIRED OVER ALL MAINS, ALL SIX (6) INCH DIAMETER AND LARGER SERVICE LATERALS, AND ANY SERVICE LATERAL NOT INSTALLED PERPENDICULAR TO THE MAIN IN ACCORDANCE WITH STANDARD PLATE NO. 27.
 - ALL WATER FACILITIES SHALL BE FILLED, DISINFECTED, PRESSURE TESTED, FLUSHED, FILLED AND AN ACCEPTABLE WATER SAMPLE OBTAINED, PRIOR TO CONNECTION TO THE LVWMD'S DISTRIBUTION SYSTEM.
 - THE CONTRACTOR MUST OBTAIN ALL METERS TWO (2) INCHES AND SMALLER FROM LVWMD CENTRAL STORES. TELEPHONE 258-3152 FORTY-EIGHT (48) HOURS PRIOR TO PICKUP.
 - CONSTRUCTION MAY INTERRUPT SERVICE, WITH LVWMD APPROVAL AND PROPER NOTIFICATION, BETWEEN THE HOURS OF 10 PM AND 6 AM, SUNDAY THROUGH THURSDAY. CIRCUMSTANCES MAY REQUIRE TEMPORARY SERVICE FEEDS BE INSTALLED, WITHOUT LVWMD REIMBURSEMENT. ANY TEMPORARY SERVICE FEED MUST HAVE PRIOR LVWMD APPROVAL.
 - ALL WATER FACILITY CONSTRUCTION MATERIALS USED MUST BE AS LISTED ON THE LVWMD'S PRE-APPROVED MATERIALS AND MANUFACTURERS LISTING FOR NEW FACILITIES, LATEST REVISION, OR SPECIFICALLY APPROVED ON THESE PLANS.

BENCHMARK
 CITY OF LAS VEGAS BENCHMARK # 7C10-2W4
 RIVET & ALUM. PLATE AT THE NE RETURN
 OF RAINBOW BLVD. & OAKLEY BLVD.
 ELEV. = 2400.33 FT. = 731.6202 M. (NAVD 88)

BASIS OF BEARINGS
 N 02° 39' 23" W - BEING THE WEST LINE OF THE SW 1/4 OF SECTION 2,
 TOWNSHIP 21 SOUTH, RANGE 60 EAST, M.D.M. CLARK COUNTY, NEVADA
 PER FILE 16, PAGE 34 OF PARCEL MAPS, CLARK COUNTY RECORDER'S OFFICE



Call before you Dig.
 1-800-227-2600

LOCATION
 8" SEWER DISCHARGES INTO 30" SEWER AT
 OAKLEY & TORREY PINES. SEE LOCATION MAP.

SEWER CONTRIBUTION
 AVERAGE FLOW = 800 GPD
 PEAK FLOW = 2320 GPD

WATER QUANTITIES ESTIMATE (PRIVATE)

1	1" SERVICE SADDLE	1 EA
2	1" WATER METER PER UDACS PLATE #1D	1 EA
3	1" R.P.P.A.	1 EA
4	8" x 6" TAPPING TEE	1 EA
5	6" TAPPING VALVE	1 EA
6	6" x 4" REDUCER	1 EA
7	4" D.C.D.A. FERCO MODEL 876 "N" PATTERN PER UDACS PLATE #208	1 EA
	6" PVC	8 LF

APPROVALS LAS VEGAS FIRE DEPARTMENT

FIRE FLOW REQUIREMENT IS: 1500 GALLONS PER MINUTE AT 20 PSI RESIDUAL PRESSURE

BASED ON:

SQUARE FOOTAGE:	12,700 SF
LARGEST AREA BETWEEN 4-HOUR AREA SEPARATION WALLS:	-
BUILDING HEIGHT:	21 FT. (MAX)
NUMBER OF STORIES:	1 FLOOR
TYPE OF CONSTRUCTION:	V - N
OCCUPANCY:	B
FULL AUTOMATIC FIRE SPRINKLER SYSTEM:	YES

REVIEWED BY: *[Signature]*
 DATE: 3-12-99

[Signature] 3-12-99
LAS VEGAS VALLEY WATER DISTRICT DATE

NOTE:
 ALL DIMENSIONS TO UTILITIES ARE TO CENTERLINE OF PIPE UNLESS INDICATED OTHERWISE

CONTRACTOR SHALL VERIFY HORIZONTAL AND VERTICAL ALIGNMENT OF EXISTING UTILITIES AND TO NOTIFY THE DESIGN ENGINEER IMMEDIATELY ON ANY DISCREPANCIES PRIOR TO CONSTRUCTION.

SUN WEST 2575 S. CIMARRON ROAD #200 LAS VEGAS, NEVADA 89117 (702) 363-8060	REVISION
	REV DATE BY
UTILITY PLAN PLAZA DE COLORES PHASE 5 - BUILDING 6	TITLE
	SCALE: 1" = 20' HOR. 1" = 2' VER.
DRAWN BY: R. J. LANGAN 3-9-99 DESIGNED BY: R. J. LANGAN 3-9-99 CHECKED BY: R. J. LANGAN 3-9-99 PROJECT NO: SWSB-005	SEAL SHEET C3 OF 4 SHEETS DRAWING NO. 107-V3056

