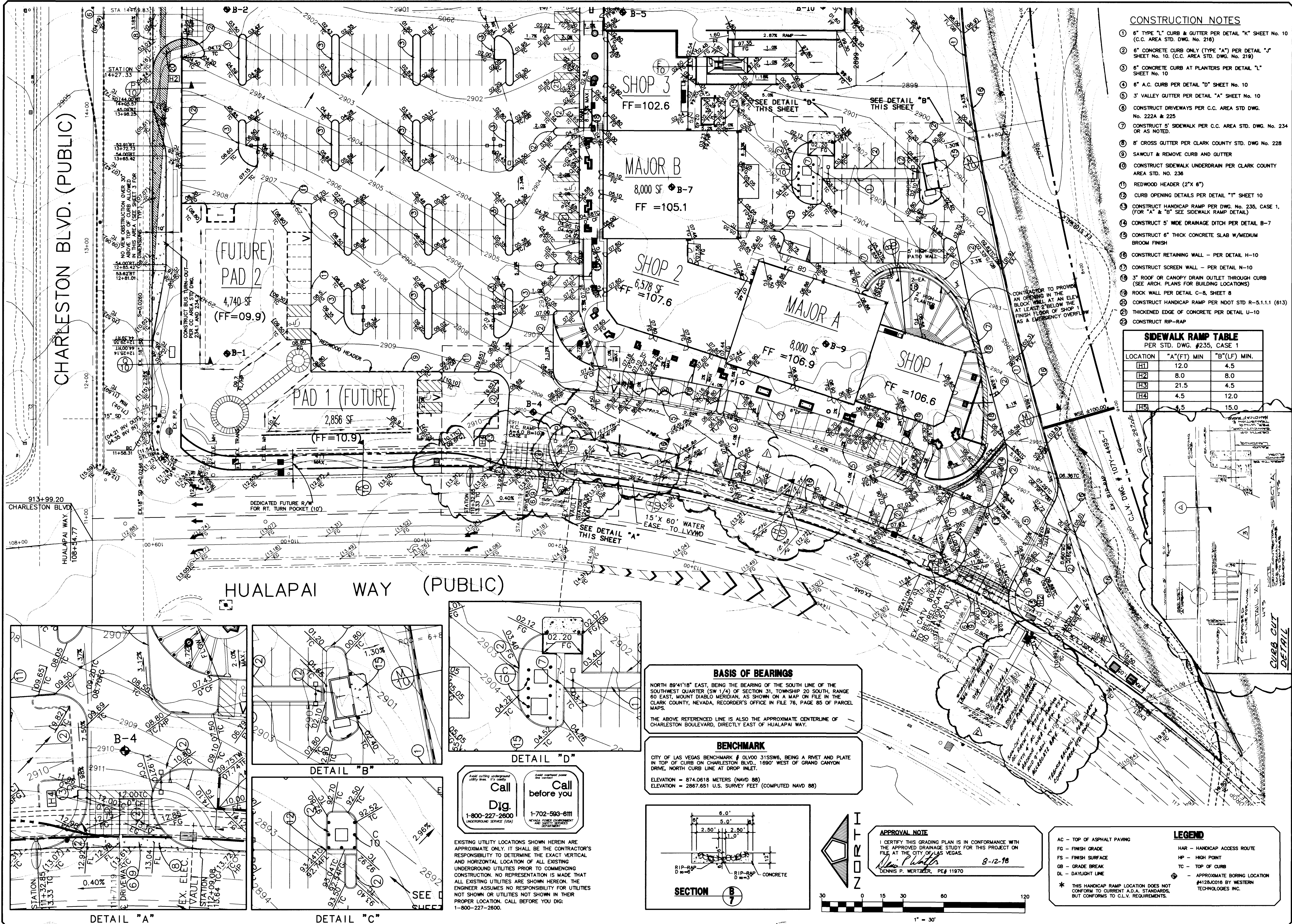


CHARLESTON BLVD. (PUBLIC)

HUALAPAI WAY (PUBLIC)

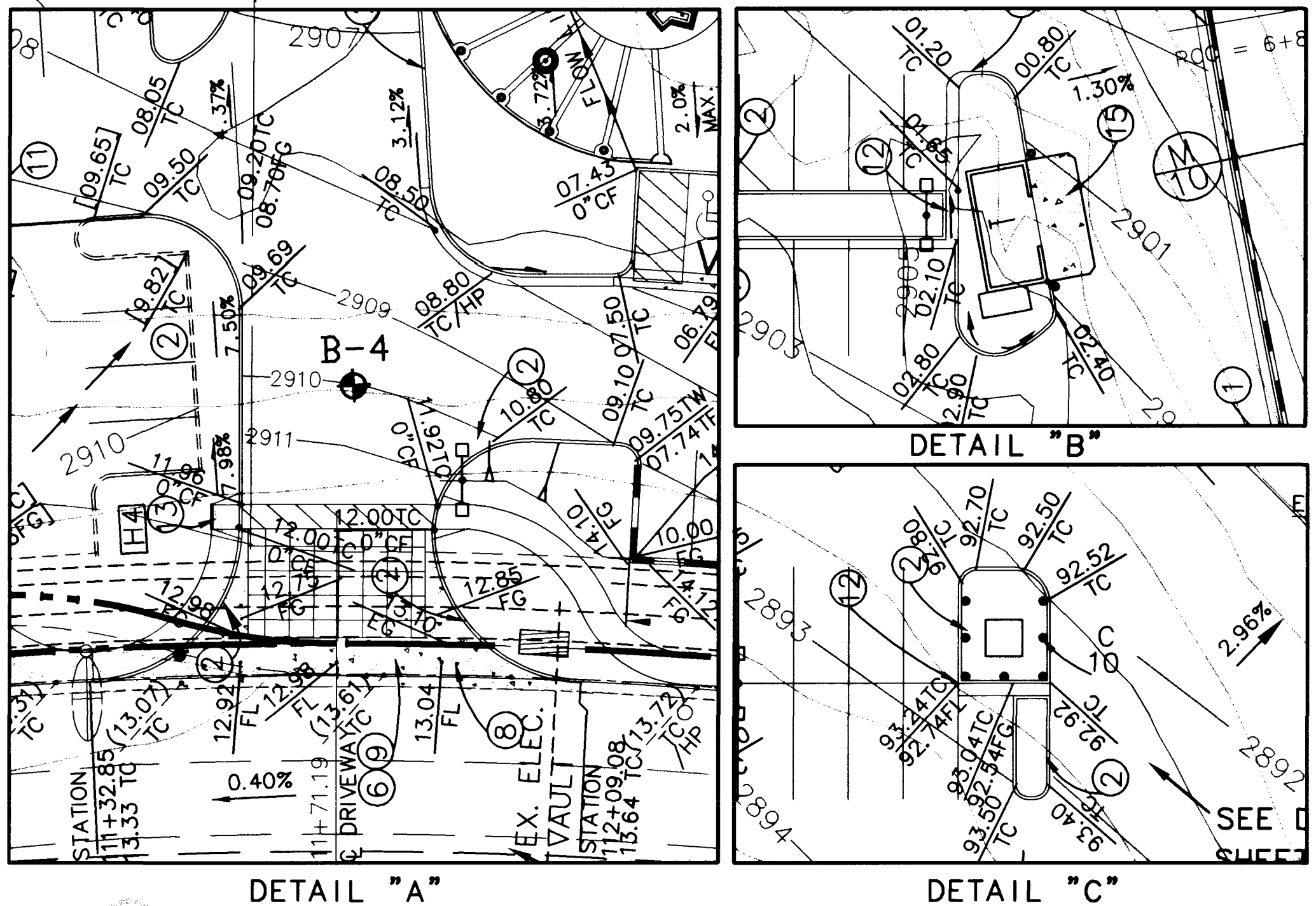


CONSTRUCTION NOTES

- 6" TYPE "L" CURB & GUTTER PER DETAIL "K" SHEET No. 10 (C.C. AREA STD. DWG. No. 218)
- 6" CONCRETE CURB ONLY (TYPE "A") PER DETAIL "J" SHEET No. 10. (C.C. AREA STD. DWG. No. 219)
- 6" CONCRETE CURB AT PLANTERS PER DETAIL "L" SHEET No. 10
- 6" A.C. CURB PER DETAIL "D" SHEET No. 10
- 3" VALLEY GUTTER PER DETAIL "A" SHEET No. 10
- CONSTRUCT DRIVEWAYS PER C.C. AREA STD. DWG. No. 222A & 225
- CONSTRUCT 5" SIDEWALK PER C.C. AREA STD. DWG. No. 234 OR AS NOTED.
- 8" CROSS GUTTER PER CLARK COUNTY STD. DWG. No. 228
- SAWCUT & REMOVE CURB AND GUTTER
- CONSTRUCT SIDEWALK UNDERDRAIN PER CLARK COUNTY AREA STD. NO. 236
- REDWOOD HEADER (2"x 6")
- CURB OPENING DETAILS PER DETAIL "T" SHEET 10
- CONSTRUCT HANDICAP RAMP PER DWG. No. 235, CASE 1. (FOR "A" & "B" SEE SIDEWALK RAMP DETAIL)
- CONSTRUCT 6" WIDE DRAINAGE DITCH PER DETAIL B-7
- CONSTRUCT 6" THICK CONCRETE SLAB W/MEDIUM BROOM FINISH
- CONSTRUCT RETAINING WALL - PER DETAIL H-10
- CONSTRUCT SCREEN WALL - PER DETAIL N-10
- 3" ROOF OR CANOPY DRAIN OUTLET THROUGH CURB (SEE ARCH. PLANS FOR BUILDING LOCATIONS)
- ROCK WALL PER DETAIL C-8, SHEET 8
- CONSTRUCT HANDICAP RAMP PER NDOT STD R-5.1.1.1 (613)
- THICKENED EDGE OF CONCRETE PER DETAIL U-10
- CONSTRUCT RIP-RAP

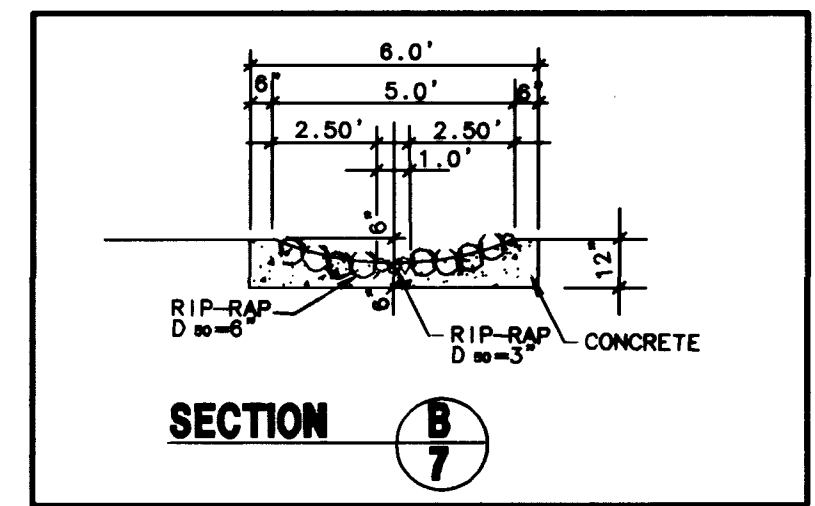
**SIDEWALK RAMP TABLE**  
PER STD. DWG. #235, CASE 1

| LOCATION | "A"(FT) MIN | "B"(LF) MIN. |
|----------|-------------|--------------|
| [H1]     | 12.0        | 4.5          |
| [H2]     | 8.0         | 8.0          |
| [H3]     | 21.5        | 4.5          |
| [H4]     | 4.5         | 12.0         |
| [H5]     | 4.5         | 15.0         |



**BASIS OF BEARINGS**  
NORTH 89°41'18" EAST, BEING THE BEARING OF THE SOUTH LINE OF THE SOUTHWEST QUARTER (SW 1/4) OF SECTION 31, TOWNSHIP 20 SOUTH, RANGE 60 EAST, MOUNT DIABLO MERIDIAN, AS SHOWN ON A MAP ON FILE IN THE CLARK COUNTY, NEVADA, RECORDER'S OFFICE IN FILE 76, PAGE 85 OF PARCEL MAPS.  
THE ABOVE REFERENCED LINE IS ALSO THE APPROXIMATE CENTERLINE OF CHARLESTON BOULEVARD, DIRECTLY EAST OF HUALAPAI WAY.

**BENCHMARK**  
CITY OF LAS VEGAS BENCHMARK # 01V00 31SSW6, BEING A RIVET AND PLATE IN TOP OF CURB ON CHARLESTON BLVD., 1690' WEST OF GRAND CANYON DRIVE, NORTH CURB LINE AT DROP INLET.  
ELEVATION = 874.0618 METERS (NAVD 88)  
ELEVATION = 2867.651 U.S. SURVEY FEET (COMPUTED NAVD 88)



**APPROVAL NOTE**  
I CERTIFY THIS GRADING PLAN IS IN CONFORMANCE WITH THE APPROVED DRAINAGE STUDY FOR THIS PROJECT ON FILE AT THE CITY OF LAS VEGAS.  
DENNIS P. WERTZNER, PE #11970 8-12-18

**LEGEND**

- AC - TOP OF ASPHALT PAVING
- FG - FINISH GRADE
- FS - FINISH SURFACE
- GB - GRADE BREAK
- DL - DAYLIGHT LINE
- HAR - HANDICAP ACCESS ROUTE
- HP - HIGH POINT
- TC - TOP OF CURB
- ⊕ - APPROXIMATE BORING LOCATION #4128JC016 BY WESTERN TECHNOLOGIES INC.

\* THIS HANDICAP RAMP LOCATION DOES NOT CONFORM TO CURRENT A.D.A. STANDARDS, BUT CONFORMS TO C.L.V. REQUIREMENTS.

PECCOLE NEVADA CORP.  
851 S. RAMPART, SUITE 100  
LAS VEGAS, NEVADA, 89128  
(702) 933.1111

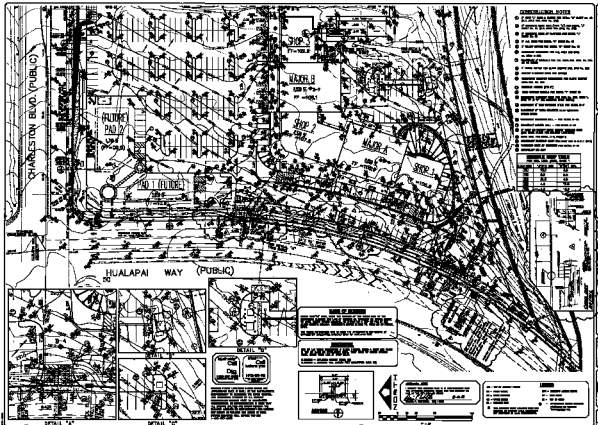
PENTACORE  
CIVIL ENGINEERING, LAND SURVEYING, PLANNING  
CONSULTING, AND ARCHITECTURE  
1703 WEST CHARLESTON BOULEVARD  
LAS VEGAS, NEVADA 89102 (702) 795-0115

GRADING PLAN II  
PECCOLE RANCH, PHASE II  
SMITH'S COMMERCIAL

DATE: 6/7/09  
DRAWN BY: CS  
DESIGNED BY: [Signature]  
CHECKED BY: [Signature]  
ADA CHECKED BY: [Signature]  
JOB NO.: 0145.0033  
SCALE: 1"=30'

PROFESSIONAL ENGINEER  
DENNIS P. WERTZNER  
CIVIL  
No. 11970 EXPIRES 8-12-18

SHEET 7 OF 12  
C.L.V. DWG.# 107-V2960



- GENERAL NOTES**
1. ALL UTILITIES SHOWN ARE BASED ON RECORD PLANS AND FIELD SURVEY.
  2. ALL UTILITIES SHALL BE DEEPENED TO A MINIMUM OF 48" BELOW FINISHED GRADE.
  3. ALL UTILITIES SHALL BE PROTECTED BY CONCRETE CURBS AND GUTTERS.
  4. ALL UTILITIES SHALL BE PROTECTED BY CONCRETE SLABS.
  5. ALL UTILITIES SHALL BE PROTECTED BY CONCRETE WALLS.
  6. ALL UTILITIES SHALL BE PROTECTED BY CONCRETE PILES.
  7. ALL UTILITIES SHALL BE PROTECTED BY CONCRETE PILES.
  8. ALL UTILITIES SHALL BE PROTECTED BY CONCRETE PILES.
  9. ALL UTILITIES SHALL BE PROTECTED BY CONCRETE PILES.
  10. ALL UTILITIES SHALL BE PROTECTED BY CONCRETE PILES.
  11. ALL UTILITIES SHALL BE PROTECTED BY CONCRETE PILES.
  12. ALL UTILITIES SHALL BE PROTECTED BY CONCRETE PILES.
  13. ALL UTILITIES SHALL BE PROTECTED BY CONCRETE PILES.
  14. ALL UTILITIES SHALL BE PROTECTED BY CONCRETE PILES.
  15. ALL UTILITIES SHALL BE PROTECTED BY CONCRETE PILES.
  16. ALL UTILITIES SHALL BE PROTECTED BY CONCRETE PILES.
  17. ALL UTILITIES SHALL BE PROTECTED BY CONCRETE PILES.
  18. ALL UTILITIES SHALL BE PROTECTED BY CONCRETE PILES.
  19. ALL UTILITIES SHALL BE PROTECTED BY CONCRETE PILES.
  20. ALL UTILITIES SHALL BE PROTECTED BY CONCRETE PILES.

**PROPOSED LOT DATA**

| LOT NO. | AREA (SQ. FT.) | AREA (SQ. METERS) |
|---------|----------------|-------------------|
| 1       | 10,000         | 929.03            |
| 2       | 10,000         | 929.03            |
| 3       | 10,000         | 929.03            |
| 4       | 10,000         | 929.03            |
| 5       | 10,000         | 929.03            |
| 6       | 10,000         | 929.03            |
| 7       | 10,000         | 929.03            |
| 8       | 10,000         | 929.03            |
| 9       | 10,000         | 929.03            |
| 10      | 10,000         | 929.03            |
| 11      | 10,000         | 929.03            |
| 12      | 10,000         | 929.03            |
| 13      | 10,000         | 929.03            |
| 14      | 10,000         | 929.03            |
| 15      | 10,000         | 929.03            |
| 16      | 10,000         | 929.03            |
| 17      | 10,000         | 929.03            |
| 18      | 10,000         | 929.03            |
| 19      | 10,000         | 929.03            |
| 20      | 10,000         | 929.03            |



**CONCRETE CURB AND GUTTER**  
 12" HIGH  
 12" WIDE  
 12" DEEP  
 12" SPACING



**CONCRETE CURB AND GUTTER**  
 12" HIGH  
 12" WIDE  
 12" DEEP  
 12" SPACING

PROFESSIONAL SEAL AND SIGNATURE AREA

DESIGN PLAN 1

PROFESSIONAL SEAL AND SIGNATURE AREA

7

10/1/2010