

- CONSTRUCTION NOTES**
- 6" TYPE "L" CURB & GUTTER PER DETAIL "K" SHEET No. 10 (C.C. AREA STD. DWG. No. 218)
 - 6" CONCRETE CURB ONLY (TYPE "A") PER DETAIL "J" SHEET No. 10. (C.C. AREA STD. DWG. No. 219)
 - 6" CONCRETE CURB AT PLANTERS PER DETAIL "L" SHEET No. 10
 - 6" A.C. CURB PER DETAIL "D" SHEET No. 10
 - 3" VALLEY GUTTER PER DETAIL "A" SHEET No. 10
 - CONSTRUCT DRIVEWAYS PER C.C. AREA STD DWG. No. 222A & 225
 - CONSTRUCT 5' SIDEWALK PER C.C. AREA STD. DWG. No. 234 OR AS NOTED.
 - 8" CROSS GUTTER PER CLARK COUNTY STD. DWG. No. 228
 - SAWCUT & REMOVE CURB AND GUTTER
 - CONSTRUCT SIDEWALK UNDERDRAIN PER CLARK COUNTY AREA STD. No. 236
 - REDWOOD HEADER (2"x 6")
 - CURB OPENING DETAILS PER DETAIL "T" SHEET 10
 - CONSTRUCT HANDICAP RAMP PER DWG. No. 235, CASE 1. (FOR "A" & "B" SEE SIDEWALK RAMP DETAIL)
 - CONSTRUCT 5' WIDE DRAINAGE DITCH PER DETAIL B-7
 - CONSTRUCT 6" THICK CONCRETE SLAB W/MEDIUM BROOM FINISH
 - CONSTRUCT RETAINING WALL - PER DETAIL H-10
 - CONSTRUCT SCREEN WALL - PER DETAIL N-10
 - 3" ROOF OR CANOPY DRAIN OUTLET THROUGH CURB (SEE ARCH. PLANS FOR BUILDING LOCATIONS)
 - ROCK WALL PER DETAIL C-8, SHEET 8
 - CONSTRUCT HANDICAP RAMP PER MOOT STD R-5.1.1.1 (613)
 - THICKENED EDGE OF CONCRETE PER DETAIL U-10
 - CONSTRUCT RIP-RAP

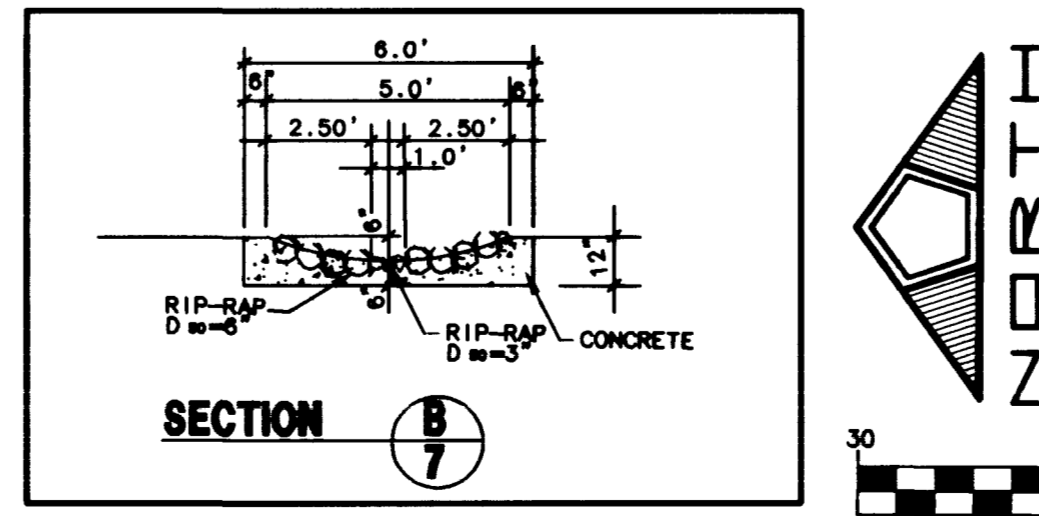
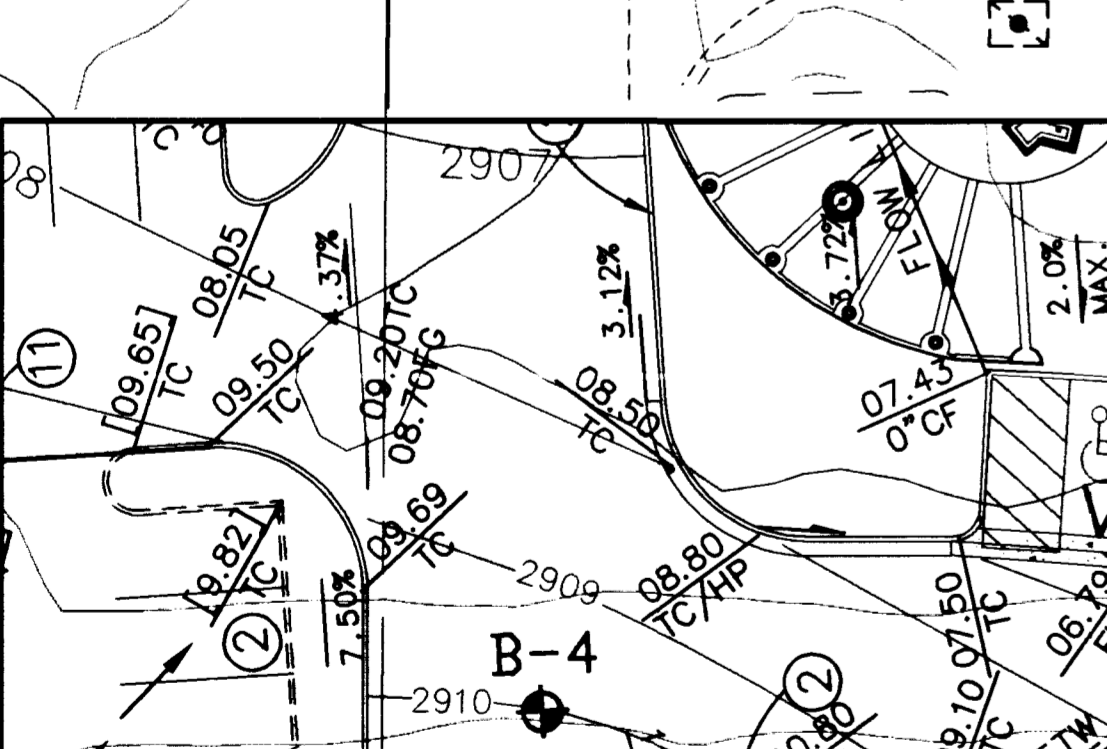
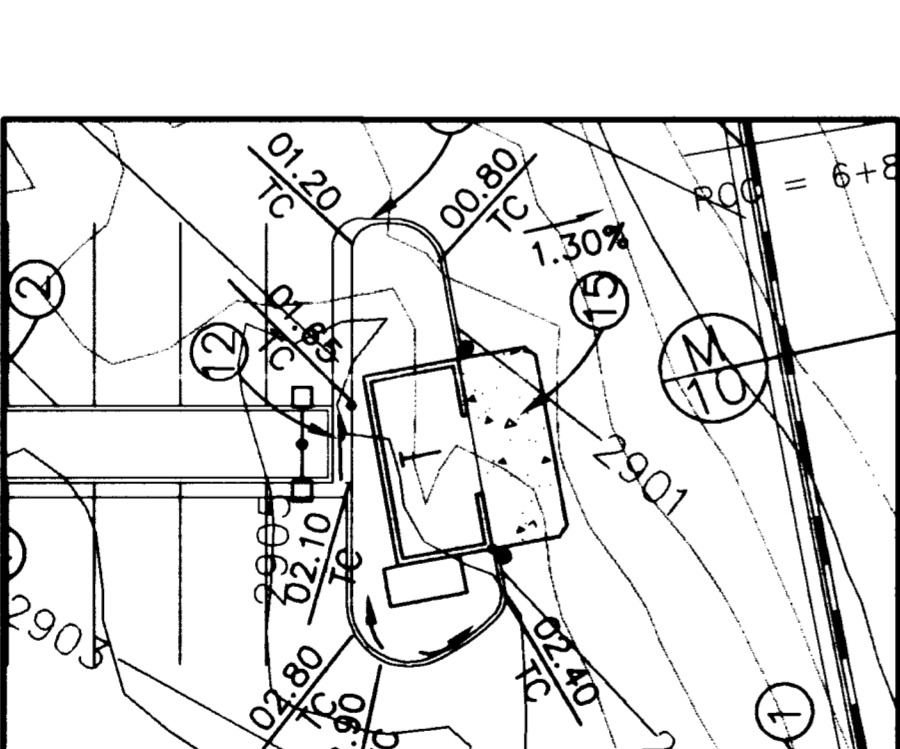
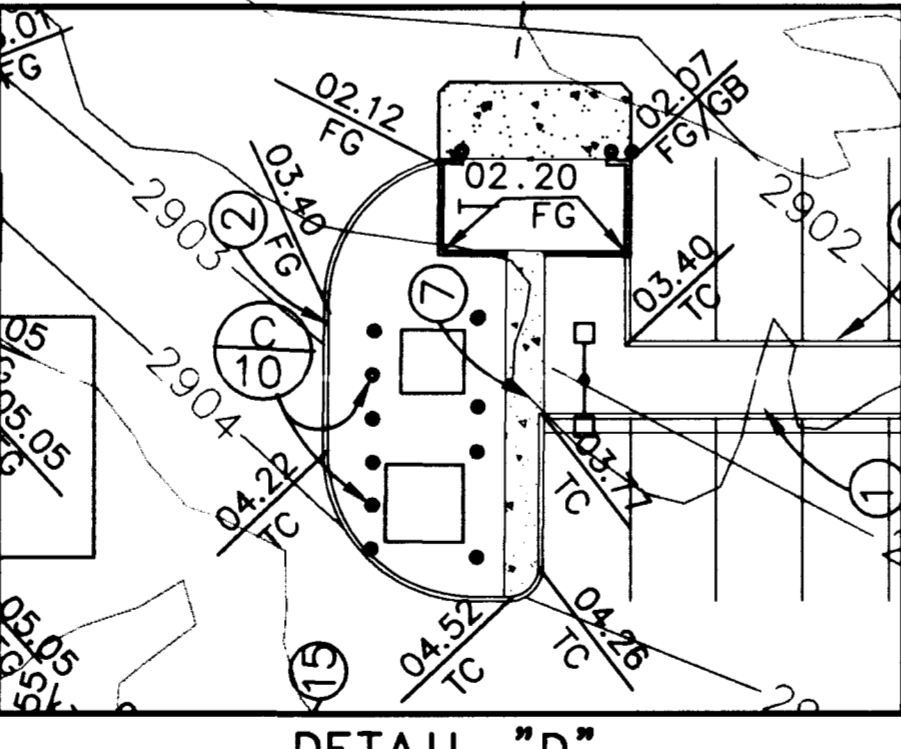
SIDEWALK RAMP TABLE
PER STD. DWG. #235, CASE 1

LOCATION	"A"(FT) MIN	"B"(LF) MIN.
H1	12.0	4.5
H2	8.0	8.0
H3	21.5	4.5
H4	4.5	12.0
H5	4.5	15.0

BASIS OF BEARINGS
NORTH 89°41'18" EAST, BEING THE BEARING OF THE SOUTH LINE OF THE SOUTHWEST QUARTER (SW 1/4) OF SECTION 31, TOWNSHIP 20 SOUTH, RANGE 60 EAST, MOUNT DIABLO MERIDIAN, AS SHOWN ON A MAP ON FILE IN THE CLARK COUNTY, NEVADA, RECORDER'S OFFICE IN FILE 76, PAGE 85 OF PARCEL MAPS.

THE ABOVE REFERENCED LINE IS ALSO THE APPROXIMATE CENTERLINE OF CHARLESTON BOULEVARD, DIRECTLY EAST OF HUALAPAI WAY.

BENCHMARK
CITY OF LAS VEGAS BENCHMARK # OLVOO 3155W6, BEING A RIVET AND PLATE IN TOP OF CURB ON CHARLESTON BLVD., 1890' WEST OF GRAND CANYON DRIVE, NORTH CURB LINE AT DROP INLET.
ELEVATION = 874.0618 METERS (NAVD 88)
ELEVATION = 2867.651 U.S. SURVEY FEET (COMPUTED NAVD 88)



APPROVAL NOTE
I CERTIFY THIS GRADING PLAN IS IN CONFORMANCE WITH THE APPROVED DRAINAGE STUDY FOR THIS PROJECT ON FILE AT THE CITY OF LAS VEGAS.
8-12-98
DENNIS P. WERTZNER, PE# 11970

LEGEND

- AC - TOP OF ASPHALT PAVING
- FG - FINISH GRADE
- FS - FINISH SURFACE
- GB - GRADE BREAK
- DL - DAYLIGHT LINE
- HAR - HANDICAP ACCESS ROUTE
- HP - HIGH POINT
- TC - TOP OF CURB
- DL - DAYLIGHT LINE
- APPROXIMATE BORING LOCATION #4126C016 BY WESTERN TECHNOLOGIES INC.

* THIS HANDICAP RAMP LOCATION DOES NOT CONFORM TO CURRENT A.D.A. STANDARDS, BUT CONFORMS TO C.L.V. REQUIREMENTS.

Call Dig. 1-800-227-2800
Call before you dig. 1-702-593-6111

EXISTING UTILITY LOCATIONS SHOWN HEREIN ARE APPROXIMATE ONLY. IT SHALL BE THE CONTRACTOR'S RESPONSIBILITY TO DETERMINE THE EXACT VERTICAL AND HORIZONTAL LOCATION OF ALL EXISTING UNDERGROUND UTILITIES PRIOR TO COMMENCING CONSTRUCTION. NO REPRESENTATION IS MADE THAT ALL EXISTING UTILITIES ARE SHOWN HEREON. THE ENGINEER ASSUMES NO RESPONSIBILITY FOR UTILITIES NOT SHOWN OR UTILITIES NOT SHOWN IN THEIR PROPER LOCATION. CALL BEFORE YOU DIG: 1-800-227-2800.

PECCOLE NEVADA CORP.
851 S. RAMPART, SUITE 100
LAS VEGAS, NEVADA 89126
(702) 933.1111

PENTACORE
CIVIL ENGINEERING, LAND SURVEYING - PLANNING
CONTRACTORS
6795 WEST CHARLESTON BOULEVARD
LAS VEGAS, NEVADA 89120 (702)258-0115

GRADING PLAN II
PECCOLE RANCH, PHASE II
SMITH'S COMMERCIAL

DATE: 8/10/98
DESIGNED BY: CS
CHECKED BY: JAW
JOB NO.: 0145.0033
SCALE: 1"=30'

PROFESSIONAL ENGINEER
DENNIS P. WERTZNER
CIVIL
#11970
8-12-98

SHEET 7 OF 12
C.L.V. DWG.# 107-V2960

