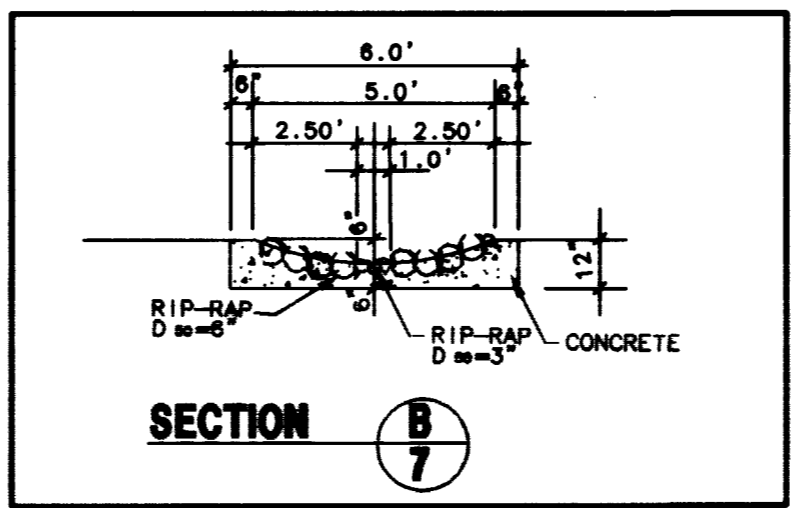


- ### CONSTRUCTION NOTES
- 6" TYPE "L" CURB & GUTTER PER DETAIL "K" SHEET No. 10 (C.C. AREA STD. DWG. No. 218)
 - 6" CONCRETE CURB ONLY (TYPE "A") PER DETAIL "J" SHEET No. 10 (C.C. AREA STD. DWG. No. 219)
 - 6" CONCRETE CURB AT PLANTERS PER DETAIL "L" SHEET No. 10
 - 6" A.C. CURB PER DETAIL "D" SHEET No. 10
 - 3" VALLEY GUTTER PER DETAIL "A" SHEET No. 10
 - CONSTRUCT DRIVEWAYS PER C.C. AREA STD. DWG. No. 222A & 225
 - CONSTRUCT 5' SIDEWALK PER C.C. AREA STD. DWG. No. 234 OR AS NOTED.
 - 8" CROSS GUTTER PER CLARK COUNTY STD. DWG. No. 228
 - SAWCUT & REMOVE CURB AND GUTTER
 - CONSTRUCT SIDEWALK UNDERDRAIN PER CLARK COUNTY AREA STD. No. 238
 - REDWOOD HEADER (2"x 6")
 - CURB OPENING DETAILS PER DETAIL "T" SHEET 10
 - CONSTRUCT HANDICAP RAMP PER DWG. No. 235, CASE 1, (FOR "A" & "B" SEE SIDEWALK RAMP DETAIL)
 - CONSTRUCT 5' WIDE DRAINAGE DITCH PER DETAIL B-7
 - CONSTRUCT 6" THICK CONCRETE SLAB W/MEDIUM BROOM FINISH
 - CONSTRUCT RETAINING WALL - PER DETAIL H-10
 - CONSTRUCT SCREEN WALL - PER DETAIL H-10
 - 3" ROOF OR CANOPY DRAIN OUTLET THROUGH CURB (SEE ARCH. PLANS FOR BUILDING LOCATIONS)
 - ROCK WALL PER DETAIL C-8, SHEET 8
 - CONSTRUCT HANDICAP RAMP PER NDOT STD R-5.1.1.1 (613)
 - THICKENED EDGE OF CONCRETE PER DETAIL U-10
 - CONSTRUCT RIP-RAP

SIDEWALK RAMP TABLE		
PER STD. DWG. #235, CASE 1		
LOCATION	"A"(FT) MIN.	"B"(LF) MIN.
H1	12.0	4.5
H2	8.0	8.0
H3	21.5	4.5
H4	4.5	12.0
H5	4.5	15.0

BASIS OF BEARINGS
 NORTH 89°41'18" EAST, BEING THE BEARING OF THE SOUTH LINE OF THE SOUTHWEST QUARTER (SW 1/4) OF SECTION 31, TOWNSHIP 20 SOUTH, RANGE 60 EAST, MOUNT DIABLO MERIDIAN, AS SHOWN ON A MAP ON FILE IN THE CLARK COUNTY, NEVADA, RECORDER'S OFFICE IN FILE 76, PAGE 85 OF PARCEL MAPS.
 THE ABOVE REFERENCED LINE IS ALSO THE APPROXIMATE CENTERLINE OF CHARLESTON BOULEVARD, DIRECTLY EAST OF HUALAPAI WAY.

BENCHMARK
 CITY OF LAS VEGAS BENCHMARK # 01V00 31SSW6, BEING A RIVET AND PLATE IN TOP OF CURB ON CHARLESTON BLVD., 1690' WEST OF GRAND CANYON DRIVE, NORTH CURB LINE AT DROP INLET.
 ELEVATION = 874.0618 METERS (NAVD 88)
 ELEVATION = 2867.651 U.S. SURVEY FEET (COMPUTED NAVD 88)

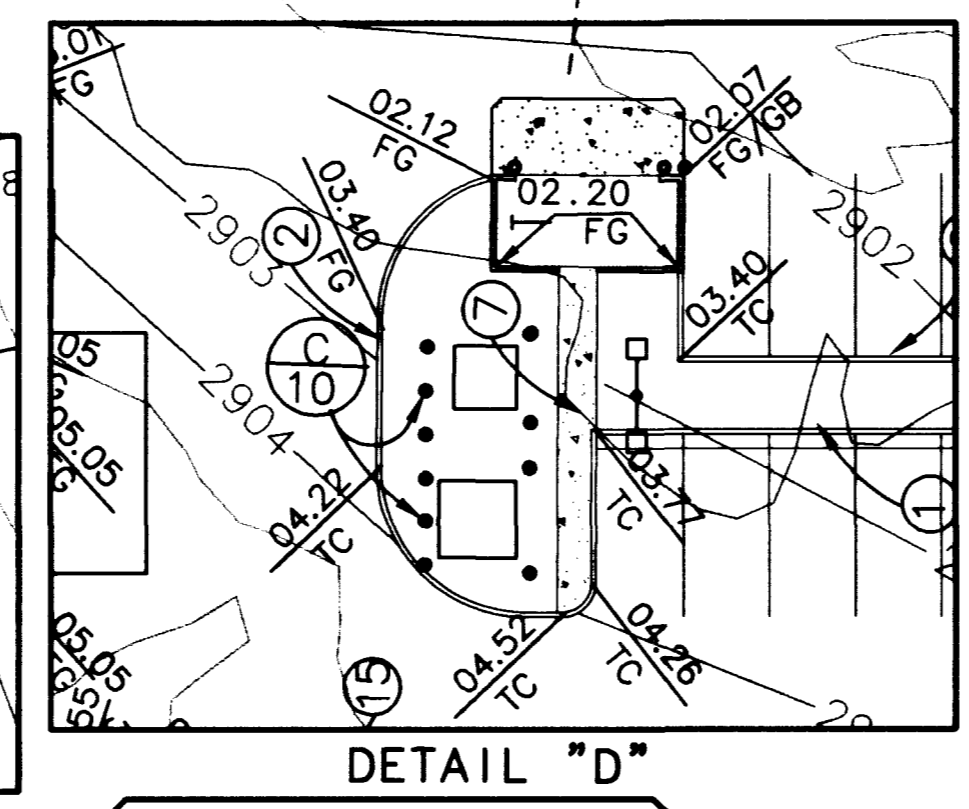
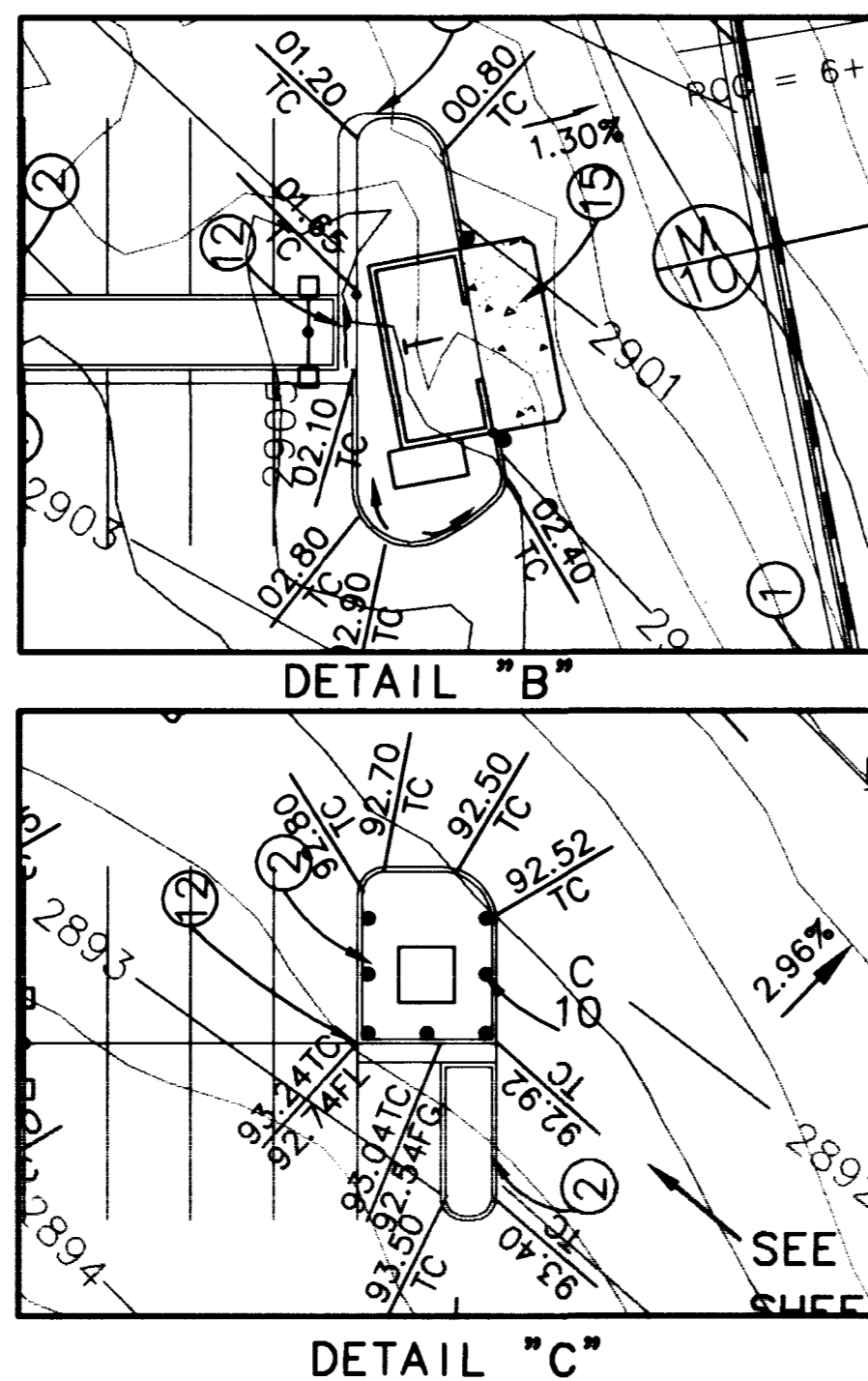
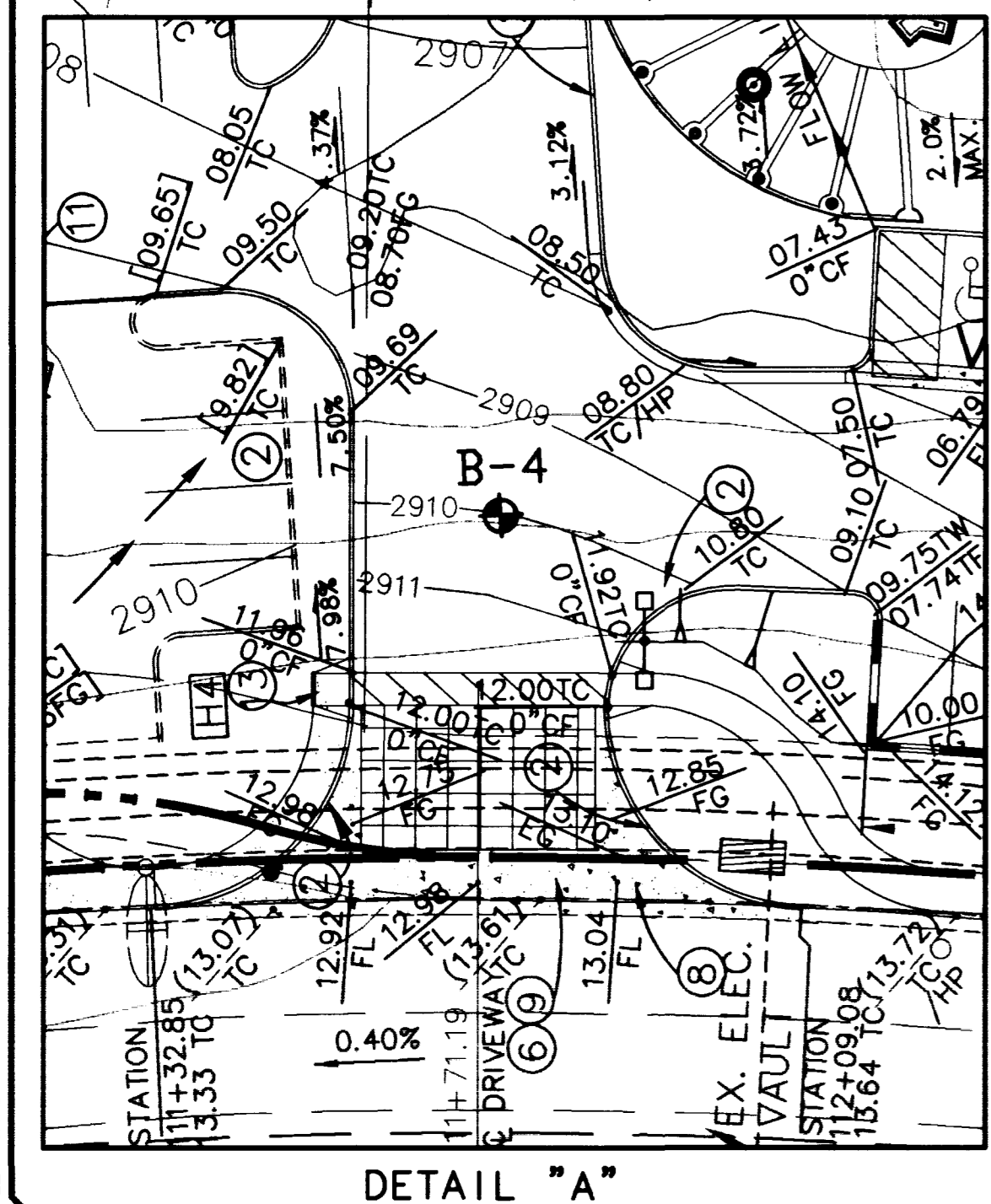


APPROVAL NOTE
 I CERTIFY THIS GRADING PLAN IS IN CONFORMANCE WITH THE APPROVED DRAINAGE STUDY FOR THIS PROJECT ON FILE AT THE CITY OF LAS VEGAS.
 8-12-18
 DENNIS P. WERTZNER, PE # 11970

LEGEND

AC - TOP OF ASPHALT PAVING	HAR - HANDICAP ACCESS ROUTE
FG - FINISH GRADE	HP - HIGH POINT
FS - FINISH SURFACE	TC - TOP OF CURB
GB - GRADE BREAK	DL - DAYLIGHT LINE
DL - DAYLIGHT LINE	BL - APPROXIMATE BORING LOCATION #1128/0016 BY WESTERN TECHNOLOGIES INC.

* THIS HANDICAP RAMP LOCATION DOES NOT CONFORM TO CURRENT A.D.A. STANDARDS, BUT CONFORMS TO C.L.V. REQUIREMENTS.



Call before you Dig
 1-800-227-2800 UNDERGROUND SERVICE (USA)
 Call before you Dig
 1-702-593-6111 NEVADA POWER CORPORATION

EXISTING UTILITY LOCATIONS SHOWN HEREIN ARE APPROXIMATE ONLY. IT SHALL BE THE CONTRACTOR'S RESPONSIBILITY TO DETERMINE THE EXACT VERTICAL AND HORIZONTAL LOCATION OF ALL EXISTING UNDERGROUND UTILITIES PRIOR TO COMMENCING CONSTRUCTION. NO REPRESENTATION IS MADE THAT ALL EXISTING UTILITIES ARE SHOWN HEREON. THE ENGINEER ASSUMES NO RESPONSIBILITY FOR UTILITIES NOT SHOWN OR UTILITIES NOT SHOWN IN THEIR PROPER LOCATION. CALL BEFORE YOU DIG: 1-800-227-2800.

PECCOLE NEVADA CORP.
 851 So. Rampart, Suite 100
 LAS VEGAS, NEVADA, 89128
 (702) 933.1111

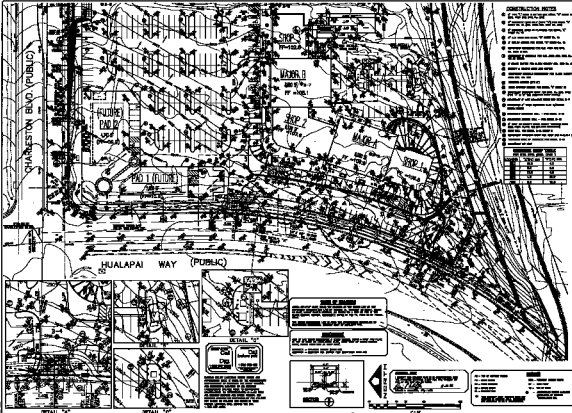
PENTACORE
 CIVIL ENGINEERING - LAND SURVEYING - PLANNING
 CONSTRUCTION MANAGEMENT - ADA CONSULTING
 LAS VEGAS, NEVADA 89102 (702) 224-0115

GRADING PLAN II
 PECCOLE RANCH, PHASE II
 SMITH'S COMMERCIAL

DATE: 8/10/98 CS
 DRAWN BY: [Signature]
 CHECKED BY: [Signature]
 ADA CHECKED: [Signature]
 JOB NO.: 0145.0033
 SCALE: 1"=30'

PROFESSIONAL ENGINEER
 DENNIS P. WERTZNER
 CIVIL
 11970
 8-12-18

SHEET **7** OF 12
 C.L.V. DWG.# 107-U2960



- CONSTRUCTION NOTES**
1. ALL DIMENSIONS TO FACE UNLESS NOTED OTHERWISE.
 2. CENTERLINE OF ALL PAVED AREAS TO BE 12' WIDE.
 3. ALL CURBS TO BE 4" HIGH AND 12" WIDE.
 4. ALL DRIVEWAYS TO BE 12' WIDE.
 5. ALL DRIVEWAYS TO BE 4" HIGH AND 12" WIDE.
 6. ALL DRIVEWAYS TO BE 12' WIDE.
 7. ALL DRIVEWAYS TO BE 4" HIGH AND 12" WIDE.
 8. ALL DRIVEWAYS TO BE 12' WIDE.
 9. ALL DRIVEWAYS TO BE 4" HIGH AND 12" WIDE.
 10. ALL DRIVEWAYS TO BE 12' WIDE.
 11. ALL DRIVEWAYS TO BE 4" HIGH AND 12" WIDE.
 12. ALL DRIVEWAYS TO BE 12' WIDE.
 13. ALL DRIVEWAYS TO BE 4" HIGH AND 12" WIDE.
 14. ALL DRIVEWAYS TO BE 12' WIDE.
 15. ALL DRIVEWAYS TO BE 4" HIGH AND 12" WIDE.
 16. ALL DRIVEWAYS TO BE 12' WIDE.
 17. ALL DRIVEWAYS TO BE 4" HIGH AND 12" WIDE.
 18. ALL DRIVEWAYS TO BE 12' WIDE.
 19. ALL DRIVEWAYS TO BE 4" HIGH AND 12" WIDE.
 20. ALL DRIVEWAYS TO BE 12' WIDE.

NO.	DESCRIPTION	AMOUNT	UNIT
1	GRAVEL	100	CU YD
2	CONCRETE	100	CU YD
3	ASPHALT	100	CU YD
4	BRICK	100	CU YD
5	CEMENT	100	CU YD
6	SAND	100	CU YD
7	GRAVEL	100	CU YD
8	CONCRETE	100	CU YD
9	ASPHALT	100	CU YD
10	BRICK	100	CU YD
11	CEMENT	100	CU YD
12	SAND	100	CU YD
13	GRAVEL	100	CU YD
14	CONCRETE	100	CU YD
15	ASPHALT	100	CU YD
16	BRICK	100	CU YD
17	CEMENT	100	CU YD
18	SAND	100	CU YD
19	GRAVEL	100	CU YD
20	CONCRETE	100	CU YD



NOTE: THE DEVELOPER SHALL BE RESPONSIBLE FOR OBTAINING ALL NECESSARY PERMITS AND APPROVALS FROM THE LOCAL AND STATE AUTHORITIES.

NOTICE: THE DEVELOPER SHALL BE RESPONSIBLE FOR OBTAINING ALL NECESSARY PERMITS AND APPROVALS FROM THE LOCAL AND STATE AUTHORITIES.



PREPARED BY: [Firm Name]

DATE: [Date]

NO.	DESCRIPTION	AMOUNT	UNIT
1	GRAVEL	100	CU YD
2	CONCRETE	100	CU YD
3	ASPHALT	100	CU YD
4	BRICK	100	CU YD
5	CEMENT	100	CU YD
6	SAND	100	CU YD
7	GRAVEL	100	CU YD
8	CONCRETE	100	CU YD
9	ASPHALT	100	CU YD
10	BRICK	100	CU YD
11	CEMENT	100	CU YD
12	SAND	100	CU YD
13	GRAVEL	100	CU YD
14	CONCRETE	100	CU YD
15	ASPHALT	100	CU YD
16	BRICK	100	CU YD
17	CEMENT	100	CU YD
18	SAND	100	CU YD
19	GRAVEL	100	CU YD
20	CONCRETE	100	CU YD

PREPARED BY: [Firm Name]

DATE: [Date]

NO.	DESCRIPTION	AMOUNT	UNIT
1	GRAVEL	100	CU YD
2	CONCRETE	100	CU YD
3	ASPHALT	100	CU YD
4	BRICK	100	CU YD
5	CEMENT	100	CU YD
6	SAND	100	CU YD
7	GRAVEL	100	CU YD
8	CONCRETE	100	CU YD
9	ASPHALT	100	CU YD
10	BRICK	100	CU YD
11	CEMENT	100	CU YD
12	SAND	100	CU YD
13	GRAVEL	100	CU YD
14	CONCRETE	100	CU YD
15	ASPHALT	100	CU YD
16	BRICK	100	CU YD
17	CEMENT	100	CU YD
18	SAND	100	CU YD
19	GRAVEL	100	CU YD
20	CONCRETE	100	CU YD

