

BENCHMARK

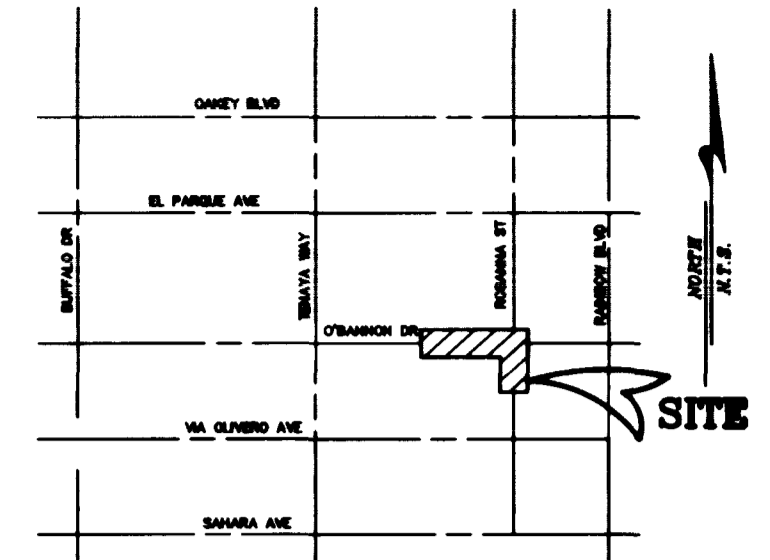
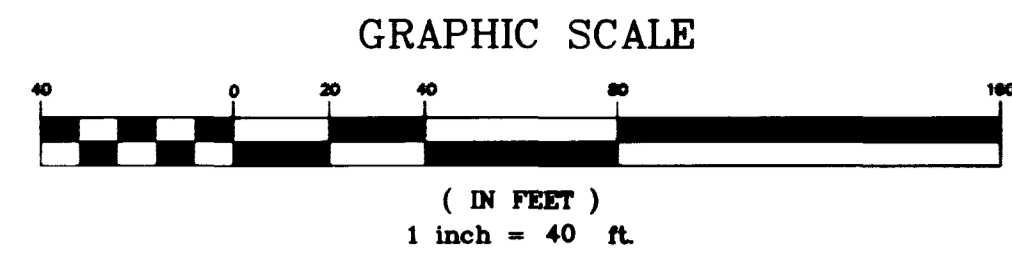
"7C10 25W6" BEING A RIVET & PLATE IN TOP OF CURB, NE RETURN OF RAINBOW BLVD. AND O'BANNON AVE. ELEV=2399.07 FEET ELEV=731.2372 METERS (NAVD 88)

BASIS OF BEARING

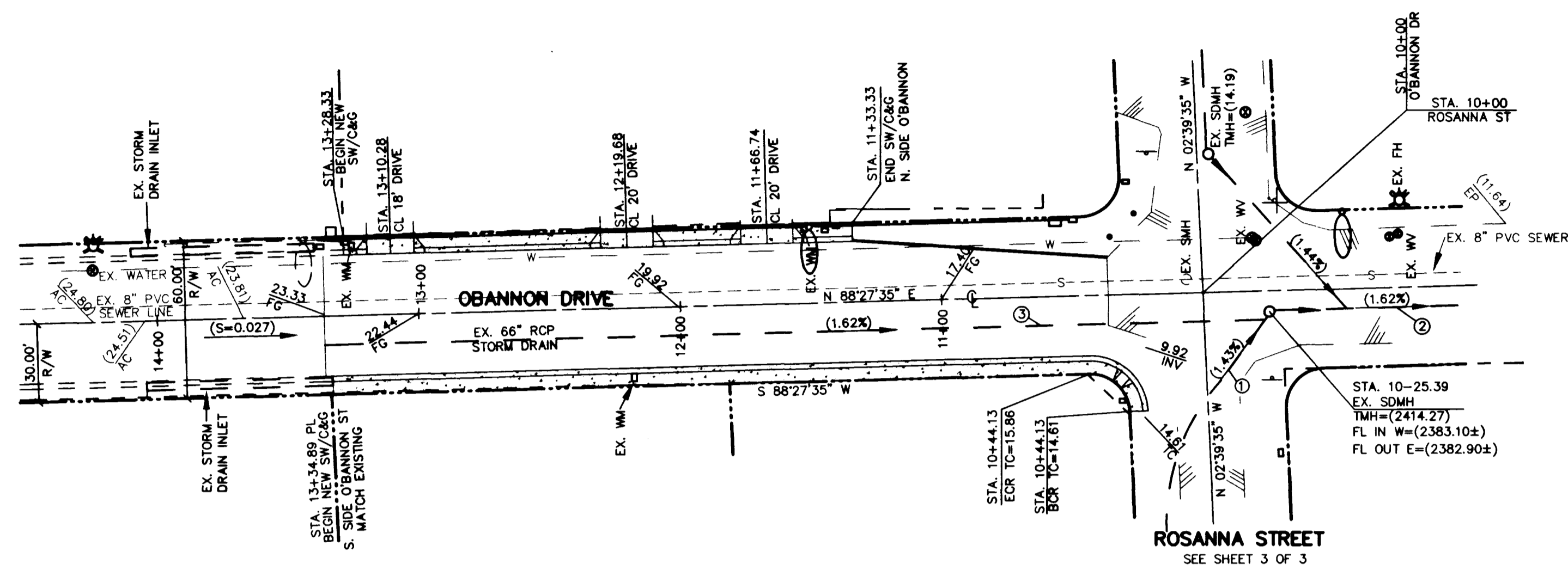
N 02°39'55" W BEING THE CENTERLINE OF ROSANNA STREET AS SHOWN ON PM 16.3-76, FILE 14, PAGE 11, IN THE OFFICE OF THE CLARK COUNTY, NEVADA, RECORDER.

NOTE:

J.H.R. ASSOCIATES ASSUMES NO RESPONSIBILITY FOR EXISTING UTILITY LOCATIONS. THE UTILITIES SHOWN ON THIS DRAWING HAVE BEEN PLOTTED FROM THE BEST AVAILABLE INFORMATION, IT IS, HOWEVER, THE CONTRACTOR'S RESPONSIBILITY TO FIELD VERIFY THE LOCATION OF ALL UTILITIES PRIOR TO THE COMMENCEMENT OF ANY CONSTRUCTION. CONTRACTOR TO FIELD VERIFY ALL EXISTING SITE CONDITIONS PRIOR TO CONSTRUCTION. IF A CONFLICT EXISTS BETWEEN WHAT IS SHOWN ON THIS DRAWING AND WHAT EXISTS IN THE FIELD, CONTRACTOR IS TO NOTIFY THE ENGINEER IMMEDIATELY.



VICINITY MAP NOT TO SCALE



NORTH
1" = 40'

THIS SHEET FOR STORM DRAIN REFERENCE ONLY

LEGEND

- EXIST. EDGE OF PAVEMENT
- CENTERLINE STREET
- PROPERTY LINE
- PROPOSED CURB & GUTTER
- EXISTING CURB & GUTTER
- EXIST. SEWER
- EXISTING WATER LINE
- EXIST. STORM DRAIN
- EXISTING BLOCK WALL
- EX. FIRE HYDRANT ASSEMBLY
- STREET LIGHT AS SHOWN
- AC ASPHALTIC CONCRETE
- C&G CURB & GUTTER
- C CENTERLINE
- DW DRIVEWAY
- EX EXISTING
- FG FINISH GRADE
- FH FIRE HYDRANT
- FL FLOW LINE
- SDDI STORM DRAIN DROP INLET
- SDMH STORM DRAIN MANHOLE
- SMH SEWER MANHOLE
- STA STATION
- TC TOP OF CURB
- TMH TOP OF MANHOLE
- 1.00 PROPOSED GRADE
- (1.00) EXISTING GRADE

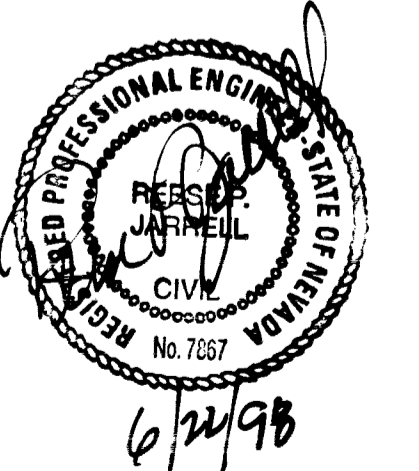
STORM DRAIN NOTES:

- ① EXIST. 10'x6" RCB STORM DRAIN
- ② EXIST. 10'x8" RCB STORM DRAIN
- ③ EXIST. 66" STORM DRAIN (CLV 731-55C)

AVOID CUTTING UNDERGROUND UTILITY LINES. IT'S COSTLY.
Call before you Dig.
1-800-227-2600
(48 hrs. Advance Notice Required)

AVOID OVERHEAD POWER LINE CONTACT. IT'S COSTLY.
Call before you OVERHEAD
1-702-593-6111
NEVADA POWER ENVIRONMENT AND SAFETY SERVICES DEPARTMENT

Station	13+00	12+00	11+00	10+00	Station
2428					2428
2424	STA. 13+14.88 END CONSTRUCTION FG=(23.93)	STA. 13+00.00 FG=22.44	STA. 12+50.00 FG=21.18	STA. 12+00.00 FG=19.92	2424
2420			STA. 11+50.00 FG=18.66	STA. 11+00.00 FG=17.40	2420
2416				STA. 10+50.00 FG=16.14	2416
2412				STA. 10+00.00 FG=14.80	2412
2408				STA. 10-25.39 EX. 9" SDMH TMH=(2474.27) FL IN W=(2383.10±) FL OUT E=(2382.90±)	2408
2404					2404
2400					2400
2396					2396
2392					2392
2388					2388
2384					2384
2380					2380



O'BANNON/ROSANNA STREET IMPROVEMENTS

OBANNON DRIVE STORM DRAIN PLAN & PROFILE

JHR ASSOCIATES LTD.
CONSULTING ENGINEERS & LAND SURVEYORS
P.O. BOX 28631
LAS VEGAS, NEVADA 89126
(702) 876-2341

DRAWN	JRH	CHECKED	R.L.R.	APPROVED	B.P.J.	DATE	07-17-97	JOB NUMBER	124-97-533
SHEET	5	REV		DATE		BY		DESCRIPTION	

