

BENCHMARK

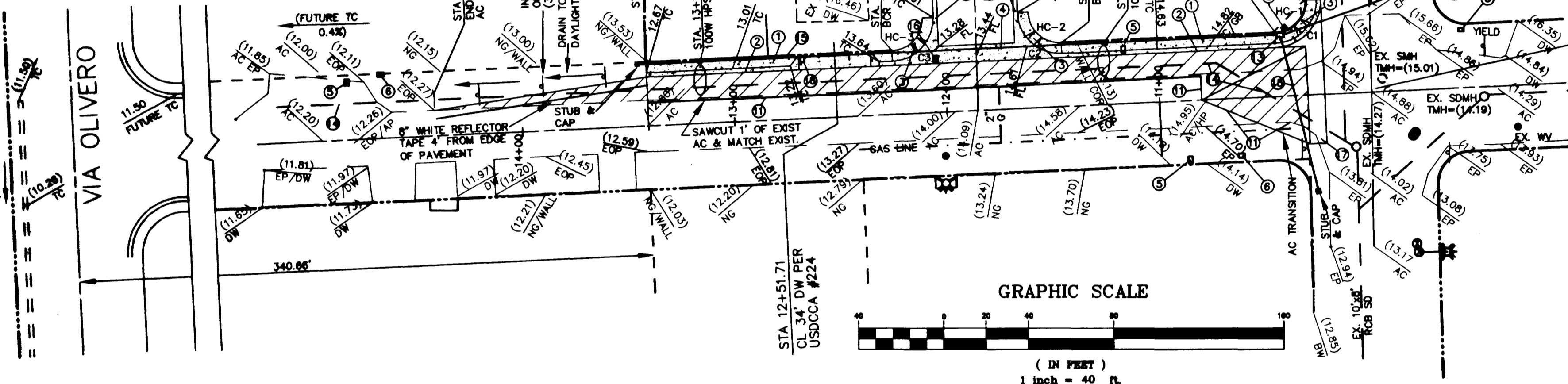
"7C10 2SWW6": BEING A RIVET & PLATE IN TOP OF CURB, NE RETURN OF RAINBOW BLVD. AND O'BANNON AVE.
ELEV=2399.07 FEET
ELEV=731.2372 METERS (NAVD 88)

BASIS OF BEARING

N 02°39'55" W: BEING THE CENTERLINE OF ROSANNA STREET AS SHOWN ON PM 163-76, FILE 14, PAGE 11, IN THE OFFICE OF THE CLARK COUNTY, NEVADA, RECORDER.

CONSTRUCTION NOTES

- 1. INSTALL 5' SIDEWALK PER USDOCCA STD DWG #234
- 2. INSTALL 2" L" TYPE C&G PER USDOCCA STD DWG #218
- 3. INSTALL HANDICAP RAMP PER USDOCCA STD DWG #235, CASE III
- 4. INSTALL 8" CROSS GUTTER PER USDOCCA STD DWG #228
- 5. EXIST WATER METER
- 6. EX. TEL VAULT
- 7. EX. ELEC. PAD
- 8. EX. CATV
- 9. INSTALL 2" ROLL TYPE CURB & GUTTER DWG #217
- 10. TRANSITION TO 2" ROLL TYPE
- 11. SAWCUT LINE
- 12. SAWCUT EXIST DRIVE TO TBC
- 13. INSTALL #3 1/2 PULL BOX
- 14. EXIST. 10" RCB
- 15. INSTALL 1 1/4" SL CONDUIT W/ 2 - #4, 1 - #8 THW
- 16. RELOCATE EXIST. WATER METER TO SIDEWALK
- 17. INSTALL 8" VALLEY GUTTER PER USDOCCA STD DWG #228



AVOID CUTTING UNDERGROUND UTILITY LINES. IT'S COSTLY.
Call before you Dig.
1-800-227-2600
(48 hrs. Advance Notice Required)

AVOID OVERHEAD POWER LINE CONTACT. IT'S COSTLY.
Call before you OVERHEAD
1-702-593-6111
NEVADA POWER ENVIRONMENT AND SAFETY SERVICES DEPARTMENT

ROSANNA STREET

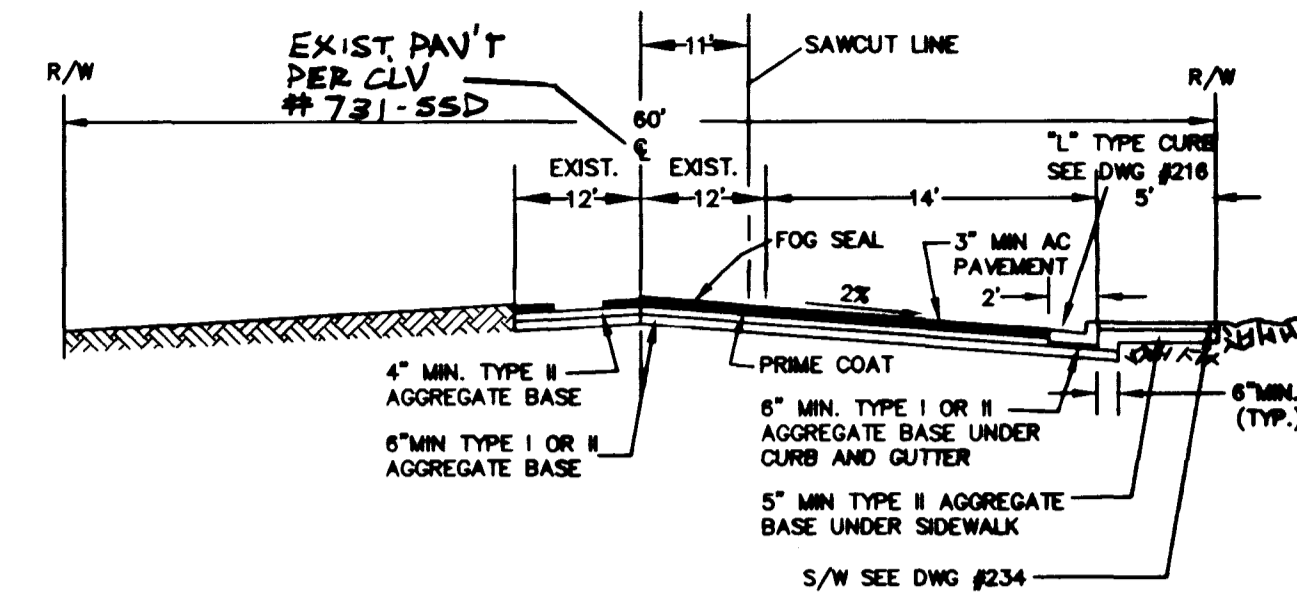
(PUBLIC STREET) 60' R/W

NORTH

SCALE 1" = 40' HORIZ
SCALE 1" = 4' VERT

CURVE TABLE

CURVE	RADIUS	LENGTH	TANGENT	DELTA
C1 TBC	20.00	31.03	19.61	85°52'50"
C2 TBC	20.00	31.72	20.31	90°52'12"
C3 TBC	20.00	31.11	19.70	89°07'48"
C4 TBC	20.00	18.16	9.76	52°01'12"
C5 TBC	45.00	223.08	35.13	284°02'25"



TYPICAL 60' STREET CROSS SECTION
UNIFORM STANDARD DRAWINGS CLARK COUNTY AREA
STD. DWG. # 205

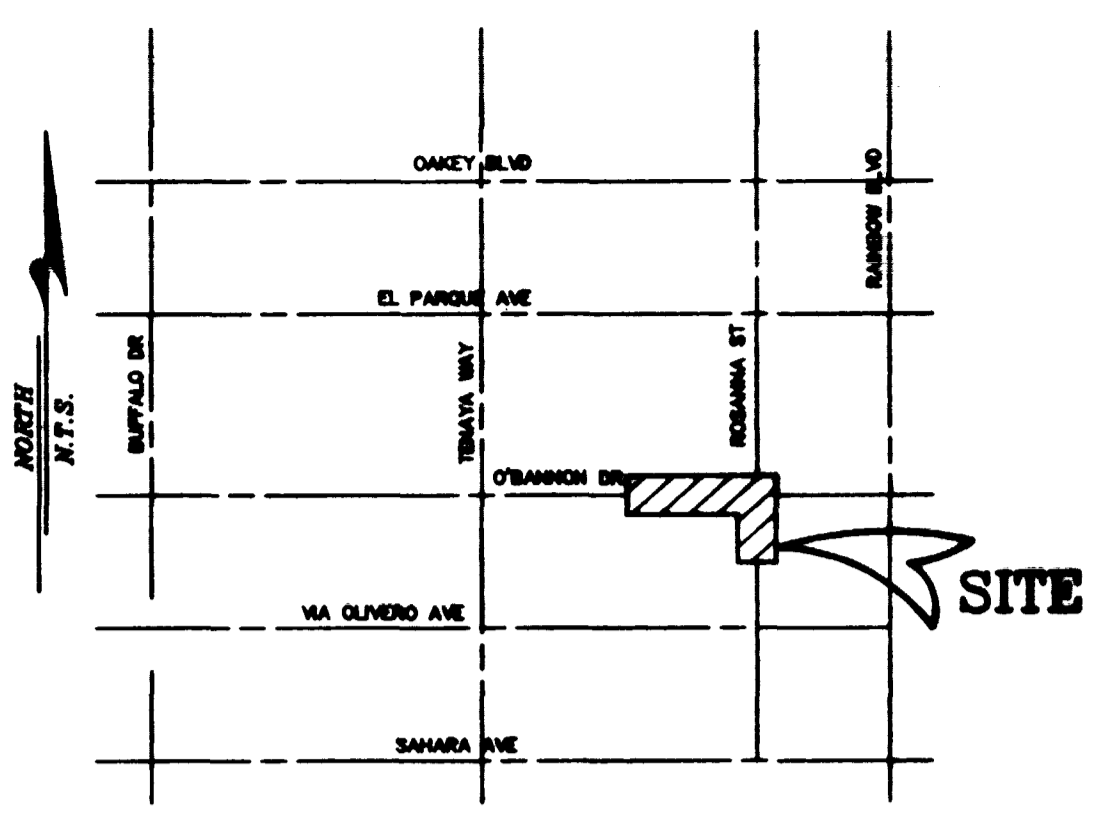
HDCP RAMP TABLE (STD DWG #235)

No.	CASE No.	A	B
HC-1	3	4.5	15.0
HC-2	3	8.0	8.0
HC-3	3	4.5	12.0

NOTE:
SEE SHEET 2 FOR STREETLIGHT LOCATION DETAIL

CLV STREETLIGHT NOTES

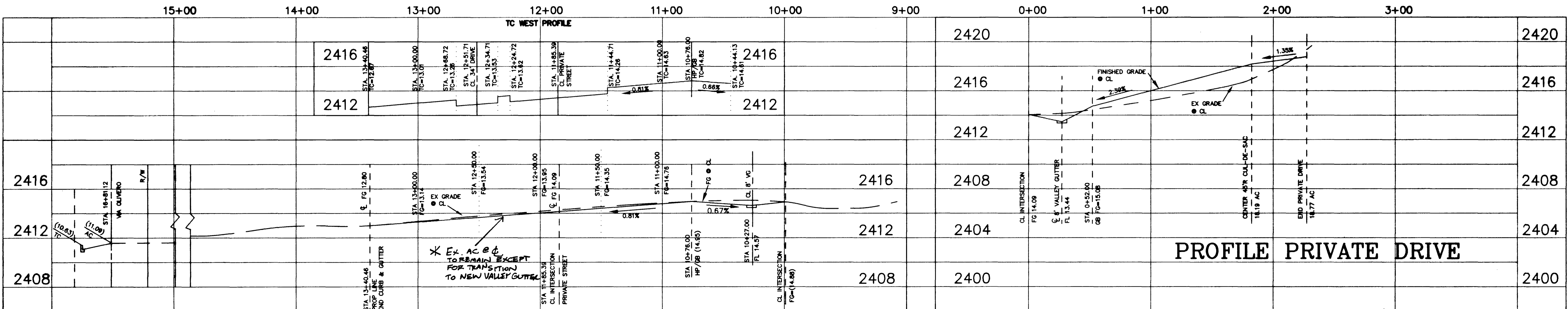
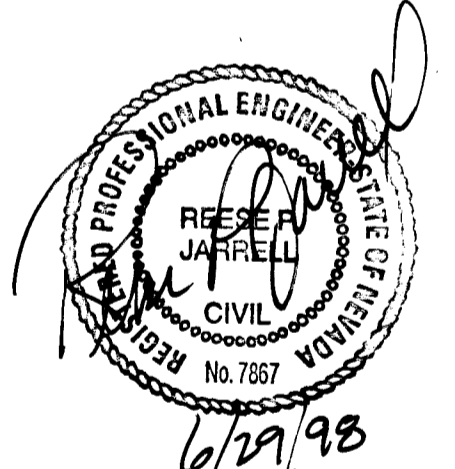
- ALL STREET LIGHTING INSTALLATIONS SHALL BE IN ACCORDANCE WITH THE STREET LIGHTING PLANS, THE "UNIFORM STANDARD SPECIFICATIONS FOR PUBLIC WORKS CONSTRUCTION OFF-SITE IMPROVEMENTS, CLARK COUNTY AREA, NEVADA", LATEST REVISION, AND THE "UNIFORM STANDARD DRAWINGS FOR PUBLIC WORKS CONSTRUCTION OFF-SITE IMPROVEMENTS, CLARK COUNTY AREA, NEVADA", LATEST REVISION.
- NO DEVIATION OF STREET LIGHT, PULL BOX, CONDUITS (ETC.) LOCATIONS SHALL BE PERMITTED WITHOUT WRITTEN APPROVAL OF THE TRAFFIC/ELECTRICAL FIELD OPERATIONS DIVISION AND THE CITY ENGINEER. ANY DEVIATION FROM THE PLAN LOCATION WILL REQUIRE COMPLIANCE WITH SECTION 623.L0.03 (E) OF THE SPECIFICATIONS.
- ALL EXISTING STREET LIGHTING SHALL REMAIN OPERATIONAL DURING CONSTRUCTION.
- ALL EMPTY CONDUIT SHALL HAVE PULL STRINGS INSTALLED PRIOR TO FINAL INSPECTION.
- ANY STRUCTURE SUCH AS BLOCK WALLS, CHAIN LINK FENCES, RETAINING WALLS, ETC., SHALL LEAVE A MINIMUM CLEARANCE OF EIGHTEEN INCHES (18") TO THE FACE OF STREET LIGHTING POLE ON ALL SIDES WHEN STREETLIGHT IS INSTALLED BEHIND SIDEWALK, AND SHALL AT NO TIME COMPLETELY ENCLOSE THE STREET LIGHTING POLE.
- AS-BUILT DRAWINGS SHALL BE SUPPLIED TO THE ELECTRICAL SERVICES SECTION PRIOR TO ANY PRELIMINARY INSPECTION. THE AS-BUILT DRAWING NEEDS TO BE STAMPED AS-BUILT AND SIGNED BY THE PREPARER.
- SERVICE POINT SHALL BE COORDINATED WITH NEVADA POWER COMPANY, AND WHEREVER POSSIBLE, BE LOCATED NEAR THE CENTER OF THE CIRCUIT. THIS SHALL BE THE CONTRACTOR'S RESPONSIBILITY.
- IT SHALL BE ASSUMED THAT IN THE ABSENCE OF AN EXISTING WORKABLE CIRCUIT TO ATTACH TO, ALL INSTALLATIONS SHALL REQUIRE A NEW SERVICE FOR OPERATION OF THE CIRCUIT.
- WHEREVER THERE IS AN OVERHEAD UTILITY THAT MAY CONFLICT WITH THE INSTALLATION OF STREET LIGHTING CIRCUITS AND/OR POLES, THESE CONFLICTS MUST BE RESOLVED BETWEEN THE DEVELOPER AND THE UTILITIES INVOLVED BEFORE STREETLIGHT BASES ARE INSTALLED AT NO EXPENSE TO THE CITY OF LAS VEGAS.
- THE CONTRACTOR SHALL FURNISH COMPLETE SERVICE TO TRANSFORMERS AND CONTROL SYSTEMS IF REQUIRED ON PLANS.



LOCATION MAP

LEGEND

- EXIST. EDGE OF PAVEMENT
- CENTERLINE STREET
- PROPERTY LINE
- PROPOSED CURB & GUTTER
- EXISTING CURB & GUTTER
- EXIST. SEWER
- EXISTING WATER LINE
- EXIST. STORM DRAIN
- EXISTING BLOCK WALL
- FIRE HYDRANT ASSEMBLY
- STREET LIGHT AS SHOWN
- ASPHALTIC CONCRETE
- CABLE TV VAULT
- CURB & GUTTER
- CENTERLINE
- DRIVEWAY
- EDGE OF PAVEMENT
- EXISTING PAVEMENT
- FINISH FLOOR
- FINISH GRADE
- FIRE HYDRANT
- FLOW LINE
- NATURAL GROUND
- STORM DRAIN DROP INLET
- STORM DRAIN MANHOLE
- STREET LIGHT
- SEWER MANHOLE
- STATION
- SIDEWALK
- TOP OF CURB
- TOP OF MANHOLE
- VALLEY GUTTER
- WATER METER
- WATER VALVE
- PROPOSED GRADE
- EXISTING GRADE
- NEW AC PAVEMENT



PROFILE PRIVATE DRIVE

PLAN & PROFILE
ROSANNA STREET
STA. 0+00 TO 9+54.05

O'BANNON/ROSANNA STREET IMPROVEMENTS

PRR ASSOCIATES LTD.
CONSULTING ENGINEERS & LAND SURVEYORS
P.O. BOX 29631
LAS VEGAS, NEVADA 89128
(702) 876-2341

SHEET	3	DESCRIPTION
OF 5 SHEETS	REV	DATE
	BY	

