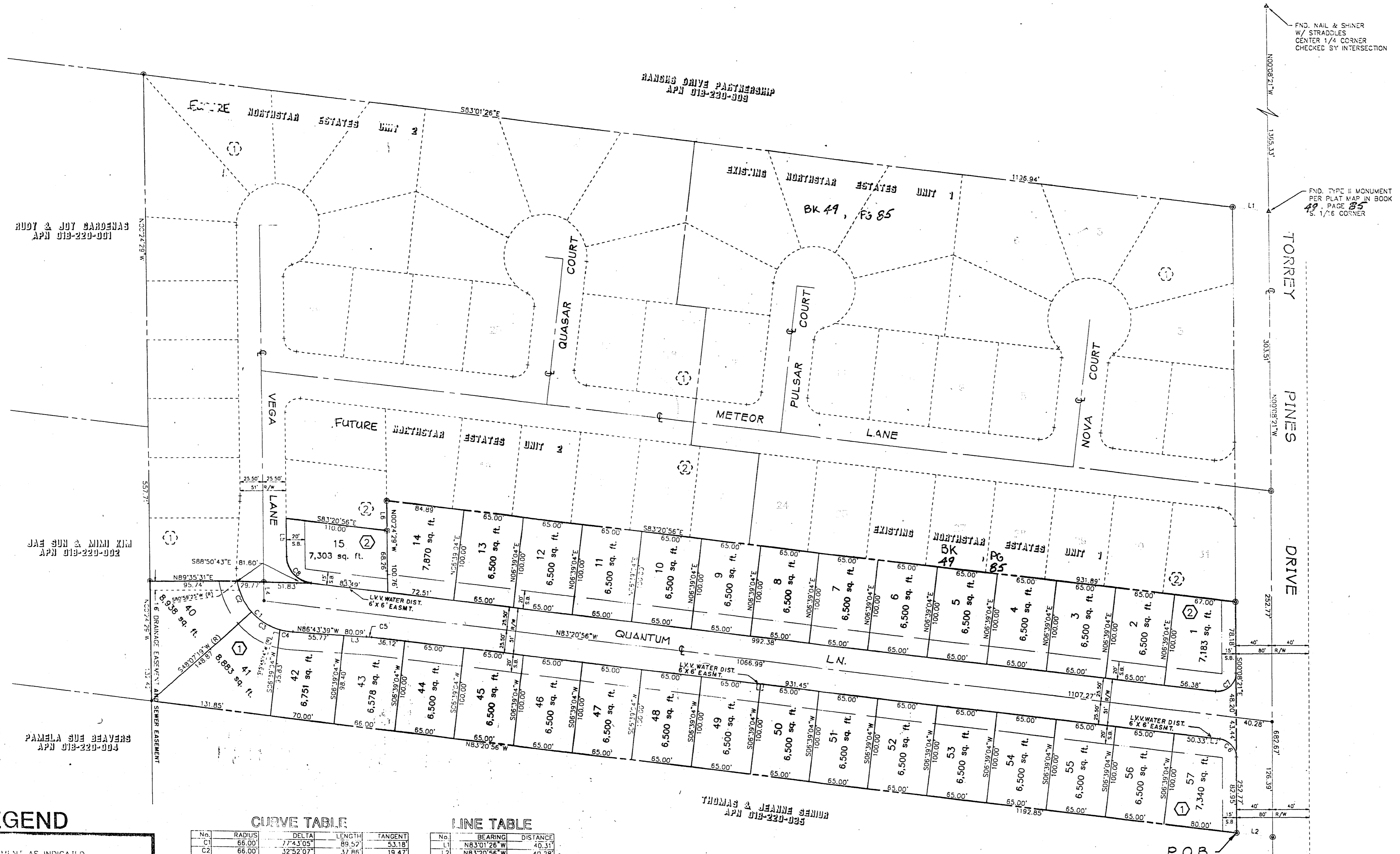


NORTHSTAR ESTATES UNIT 3

BEING A PORTION OF THE NORTH HALF (N 1/2) OF THE SOUTHEAST QUARTER (SE 1/4) OF THE SOUTHWEST QUARTER (SW 1/4) OF SECTION 35, TOWNSHIP 19 SOUTH, RANGE 50 EAST, M.D.M., CITY OF LAS VEGAS, COUNTY OF CLARK, STATE OF NEVADA



SCALE: 1"=60'

RUDY & JOY BARONAS
APN 919-220-001

JAN LEE & RUS ELL
APN 922-810-100

PAMELA ENE YEMPA
APN 922-810-100

FND. NAIL & SHNER
W/ STRADDLES
CENTER 1/4 CORNER
CHECKED BY INTERSECTION

FND. TYPE II MONUMENT
PER PLAT MAP IN BOOK
48, PAGE 85
S. 1/4 CORNER

LEGEND

- ▲ FOUND MONUMENT AS INDICATED
- FND. 5/8" REBAR W/ ALUM. CAP PLS 7008
- SET TYPE II MONUMENT PLS 7008
- CURVE DATA
- LINE DATA
- LOT NUMBER (TOTAL THIS MAP = 57)
- BLOCK NUMBER
- R/W RIGHT-OF-WAY
- SETBACK LINE (20' FRONT, 15' SIDE)
- PROPERTY LINE
- BOUNDARY LINE
- CENTERLINE

CURVE TABLE

No.	RADIUS	DELTA	LENGTH	TANGENT
C1	66.00'	77°43'05"	89.57'	45.31'
C2	66.00'	32°52'07"	37.86'	19.47'
C3	66.00'	32°22'04"	37.79'	19.15'
C4	66.00'	12°28'54"	14.36'	2.22'
C5	95.00'	03°22'43"	5.60'	2.80'
C6	20.00'	83°12'35"	28.05'	17.76'
C7	20.00'	96°47'25"	33.79'	22.52'
C8	30.00'	82°56'27"	43.43'	26.51'

LINE TABLE

No.	BEARING	DISTANCE
L1	N83°01'28"W	45.31'
L2	N83°20'56"W	40.28'
L3	S86°43'38"E	24.37'
L4	N00°24'29"W	20.69'
L5	N00°24'29"W	41.76'
L6	N00°24'29"W	32.50'

NOTE: SET SCRIBED "X" ON TOP OF CURB AND NAIL AND PLS 7008 TAG IN WALL AT ALL PROPERTY LINE PROJECTIONS.

NOTE !!!
Direct vehicular access to
Torrey Pines Dr., from Lot 57,
Block 1, and Lot 1, Block 2, is
Prohibited

