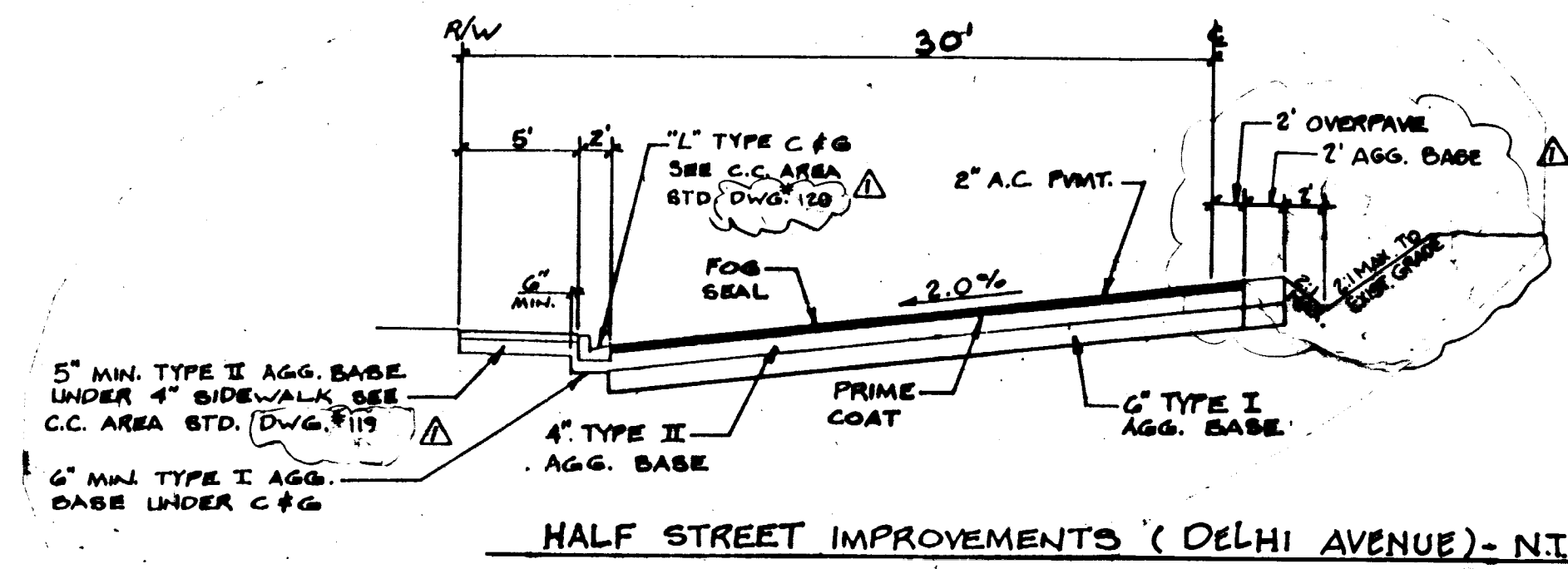


PLAN

C4.03
 QUANTITIES (THIS SHEET ONLY)

DESCRIPTION	EST.	UNIT
2" THICK AC PVM'T	1883	SY.
TYPE I AGG. BASE	339	CY.
TYPE II AGG. BASE	297	CY.
"L" TYPE C & G	881	SF.
8" WIDE VALLEY GUTTER W/1 SPANDREL	878	SF.
SPANDREL CONC.	310	SF.
4" THICK SIDEWALK	3302	SF.
100 W. H.P.S. STR. LIGHTS	3	EA.

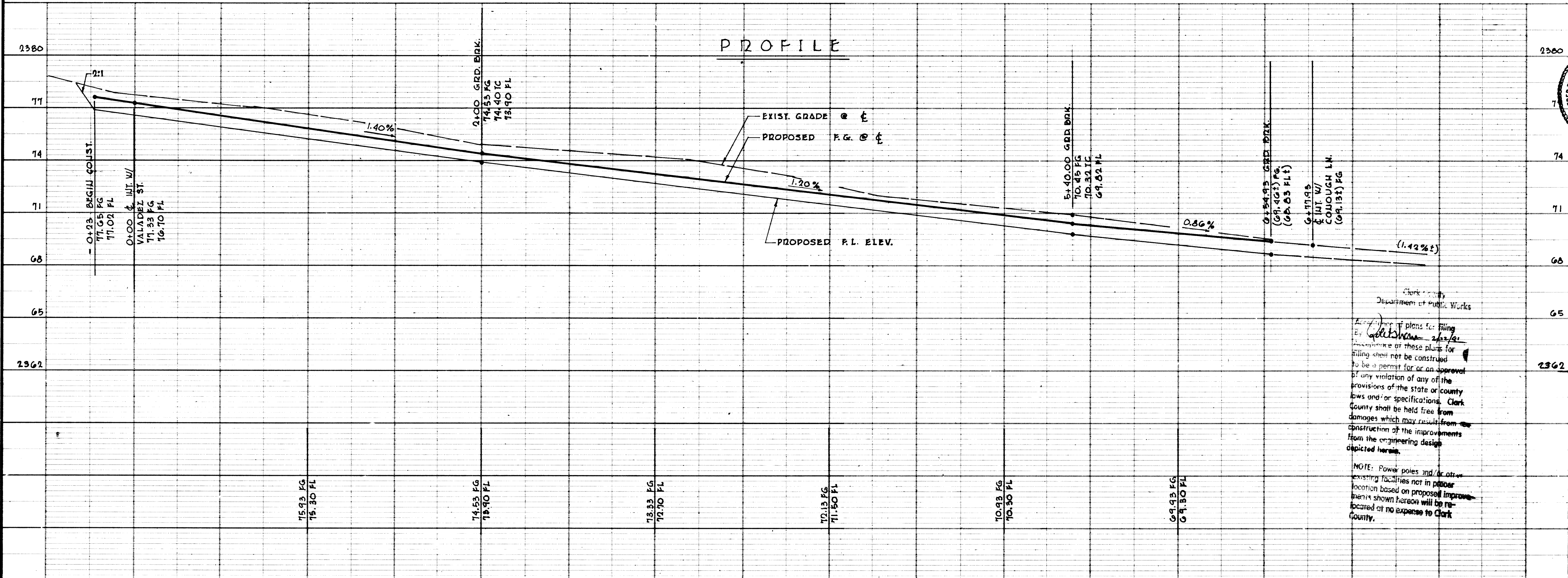


HALF STREET IMPROVEMENTS (DELHI AVENUE) - NTS

Call before you Dig.
 1-800-227-2600

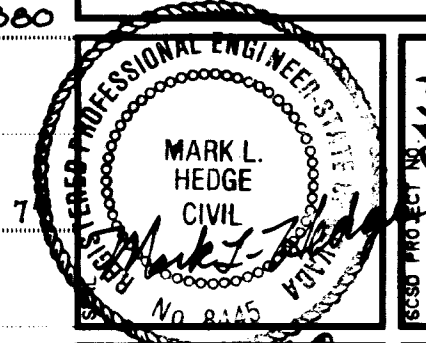
MARTIN & MARTIN assumes no responsibility for utility locations. The utilities shown on this drawing have been plotted from the best available information. It is, however, the contractor's responsibility to field verify the location of all utilities prior to the commencement of any construction.

PROFILE

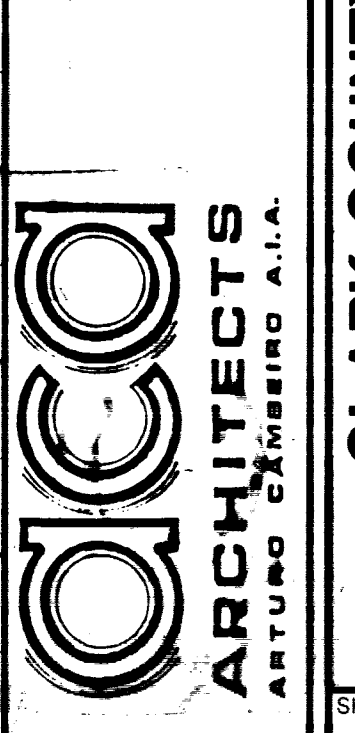


REV	DESCRIPTION	DATE	BY
1	GEN REV (CCPW)	12/19/90	MJF

THESE DRAWINGS AS INSTRUMENTS OF SERVICES ARE AND SHALL REMAIN THE PROPERTY OF THE ARCHITECT
 THESE DRAWINGS ARE NOT TO BE SCALED



MARTIN & MARTIN
 PROFESSIONAL ENGINEERS
 1701 W. CHARLESTON BL.
 SUITE 420
 LAS VEGAS, NEVADA 89102
 PHONE (702) 388-8005



CLARK COUNTY SCHOOL DISTRICT
 SPECIAL PROJECTS 4280 EUCALYPTUS ANNEX 799-5025 LAS VEGAS, NEVADA 89121
 PROJECT
 MARC A. KAHERE ELEMENTARY SCHOOL
 DRAWING TITLE
 DELHI AVENUE - STREET IMPROVEMENTS

C4.03

