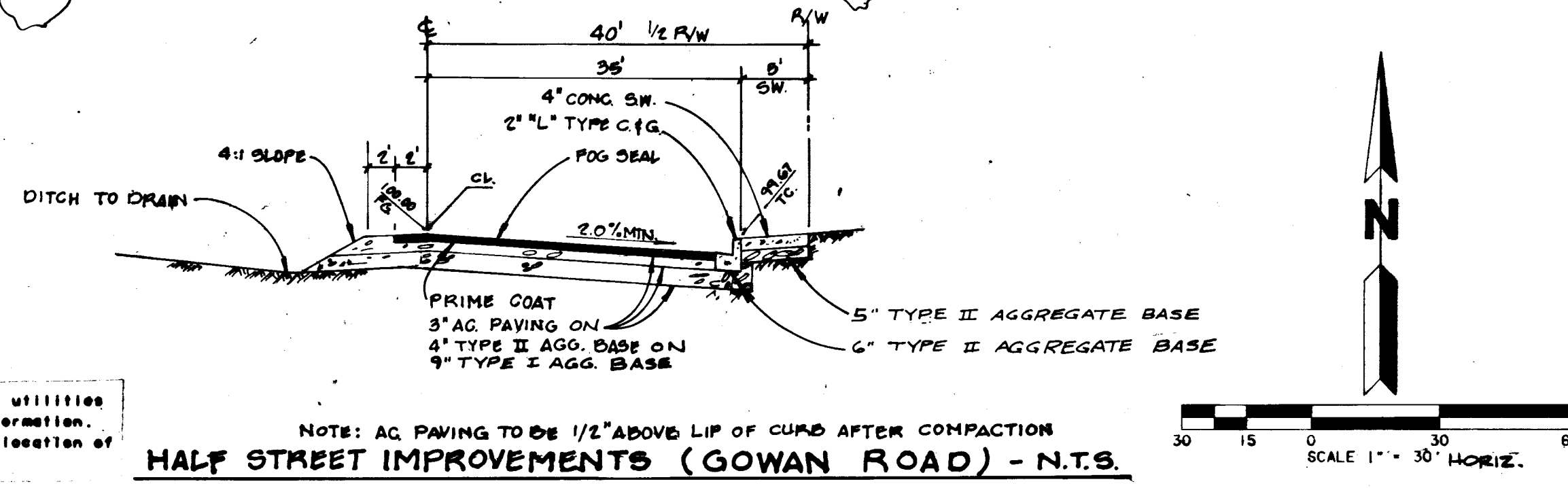


VALADEZ ST. SEE C 4.04

C4.01

QUANTITIES (THIS SHEET ONLY)	EST.	SY.
4" THICK AC PAV'T	2488	SY.
TYPE I AGG. BASE	622	CY.
TYPE II AGG. BASE	334	CY.
8" WIDE VALLEY GUTTER	657	LF.
W/1 SPANDREL	678	SF.
SPANDREL CONC.	310	SF.
4" THICK SIDEWALK	3285	SF.
250 W. H.P.S. STR. LIGHTS	4	EA.
15" SEWER P.V.C.	472	LF.
18" SEWER	206	LF.
12" WATER P.V.C.	679	LF.
STD. FIRE HYD. ASSEMBLY	1	EA.
12" GATE VALVE	1	EA.
10" GATE VALVE	1	EA.

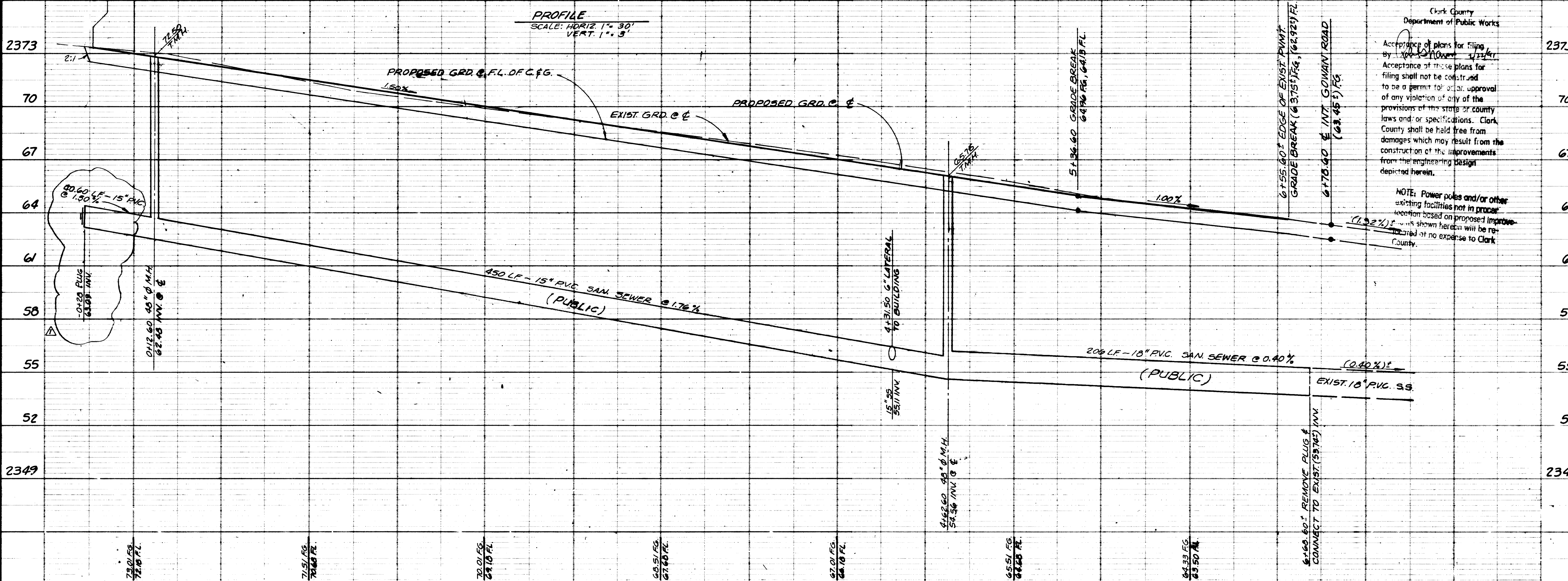
PLAN



Call before you Dig  
 1-800-227-2888

MARTIN & MARTIN assumes no responsibility for utility locations. The utilities shown on this drawing have been plotted from the best available information. It is, however, the contractor's responsibility to field verify the location of all utilities prior to the commencement of any construction.

NOTE: AC PAVING TO BE 1/2" ABOVE LIP OF CURB AFTER COMPACTION  
 HALF STREET IMPROVEMENTS (GOWAN ROAD) - N.T.S.



REV	DESCRIPTION	DATE	BY
1	GEN REV (CCPW)	12/20/90	MJT

THESE DRAWINGS AS INSTRUMENTS OF SERVICES ARE AND SHALL REMAIN THE PROPERTY OF THE ARCHITECT

THESE DRAWINGS ARE NOT TO BE SCALED

Clark County Department of Public Works

Acceptance of plans for filing by 12/20/90

Acceptance of these plans for filing shall not be construed to be a permit for or approval of any violation of any of the provisions of the state or county laws and/or specifications. Clark County shall be held free from damages which may result from the construction of the improvements from the engineering design depicted herein.

NOTE: Power poles and/or other existing facilities not in process shown based on proposed improvements shown herein will be re-located at no expense to Clark County.

MARTIN & MARTIN ARCHITECTS

CLARK COUNTY SCHOOL DISTRICT

MARC A. KAHERE ELEMENTARY SCHOOL

GOWAN ROAD - STREET IMPROVEMENTS

C4.01

715-74

