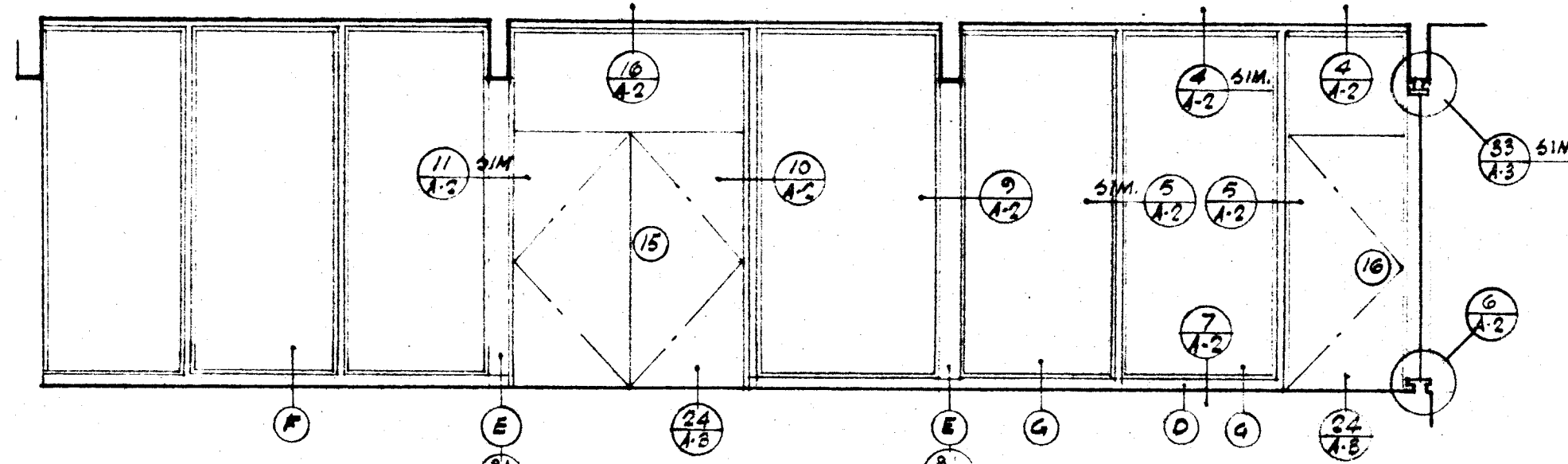
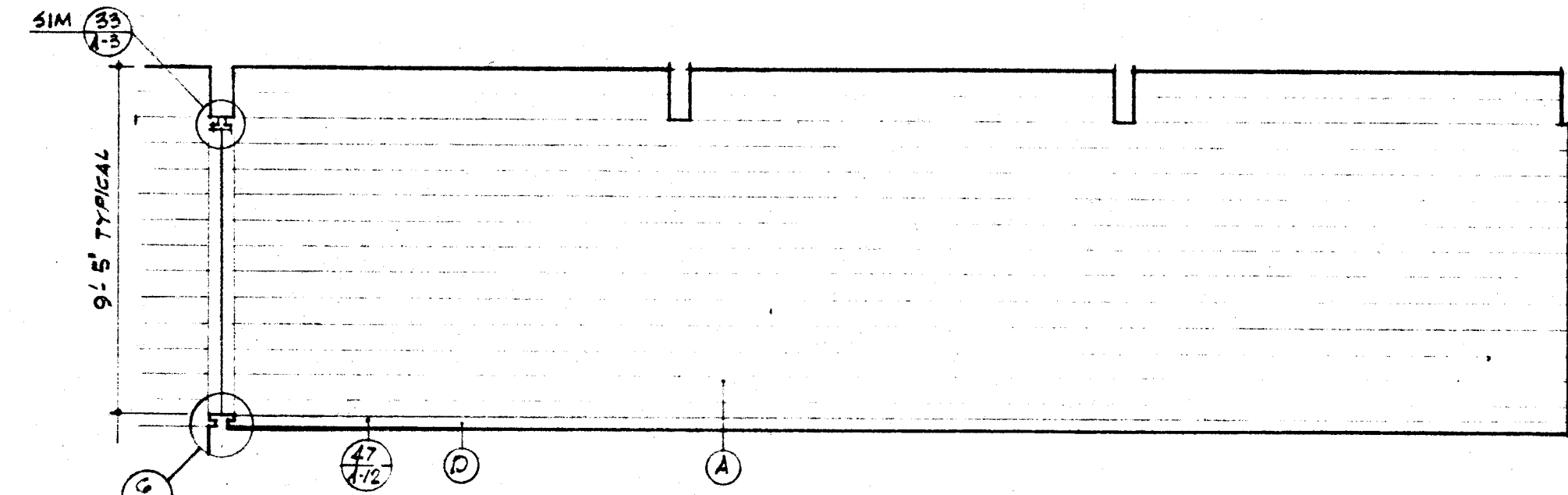


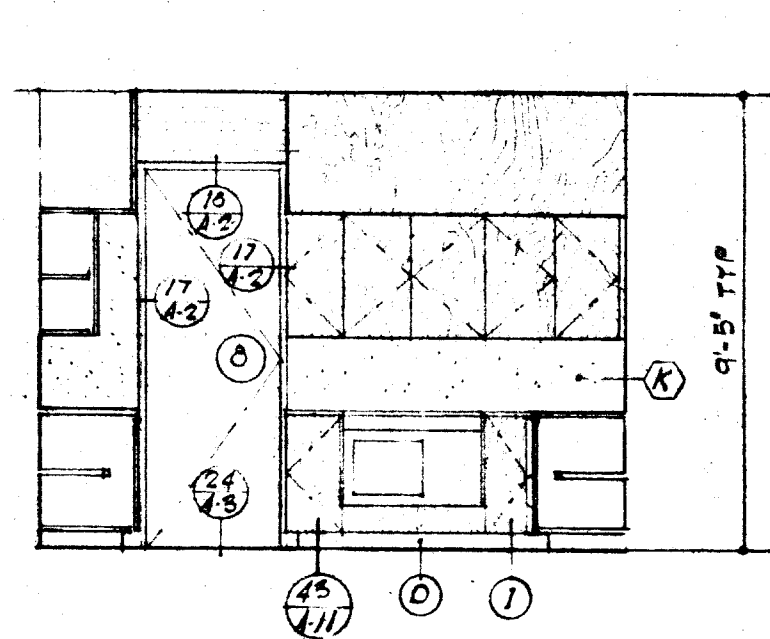
21 NORTH WALL - GAME RM & LOUNGE NO. 13



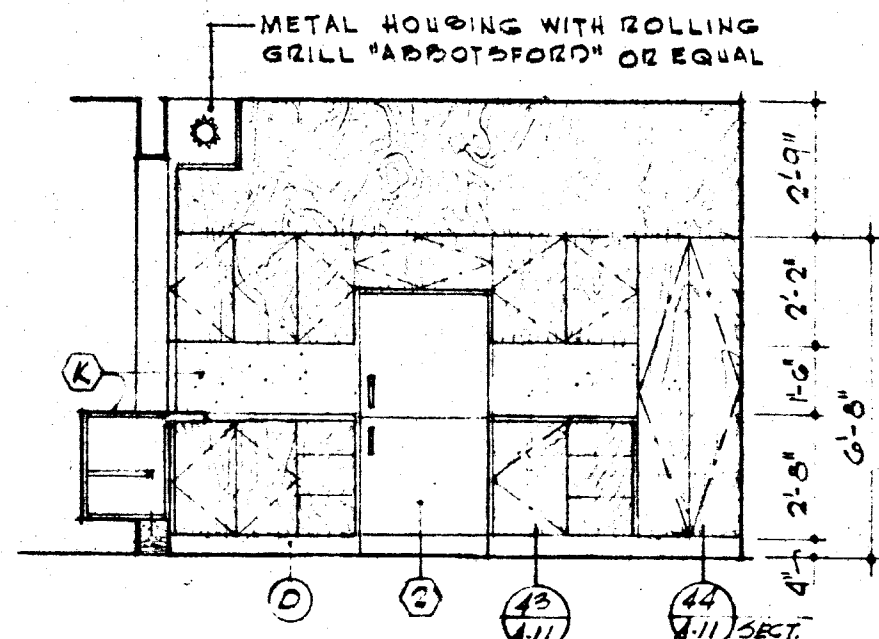
22 EAST WALL - GAME RM & LOUNGE NO. 13



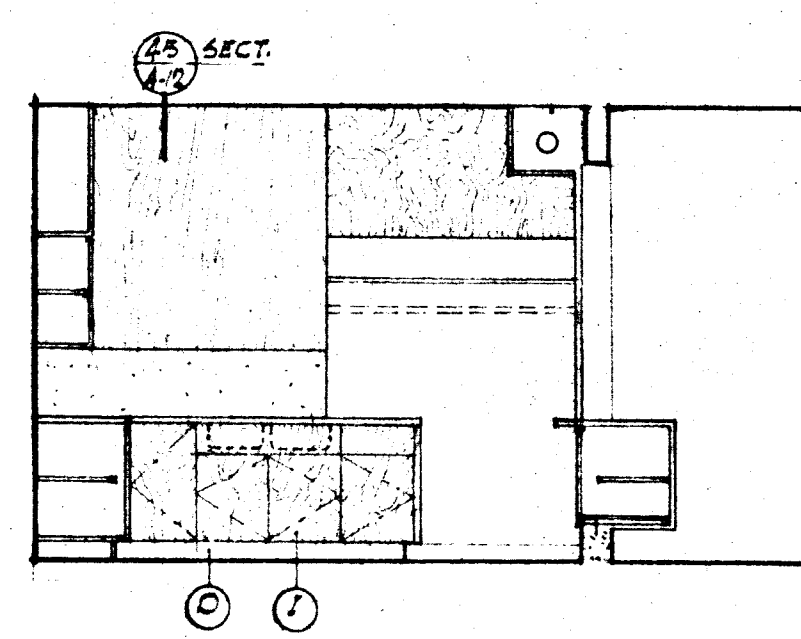
23 WEST WALL - GAME RM & LOUNGE NO. 13



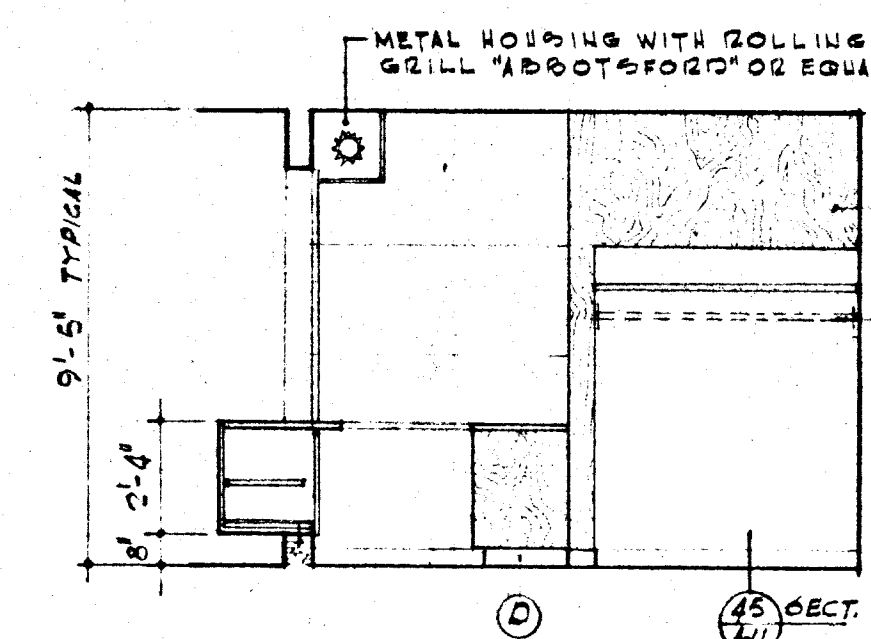
24 NORTH WALL - KITCHEN NO. 8



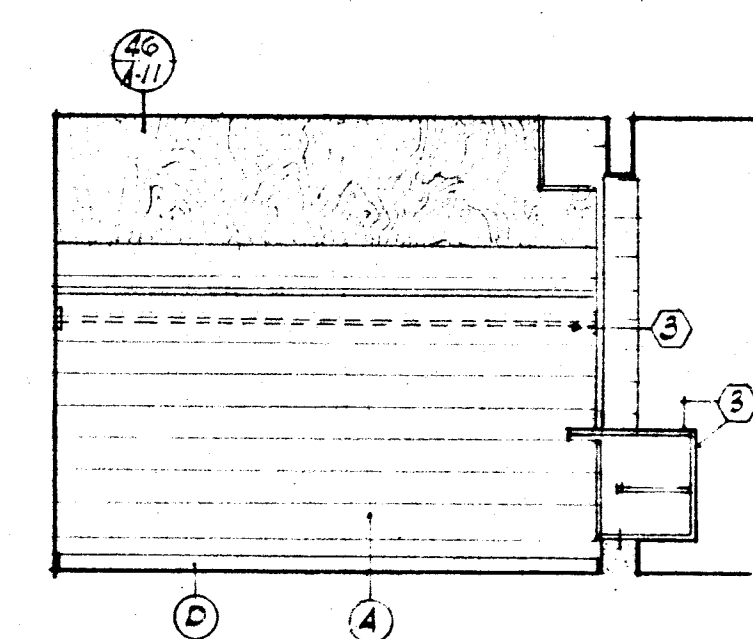
25 WEST WALL - KITCHEN NO. 8



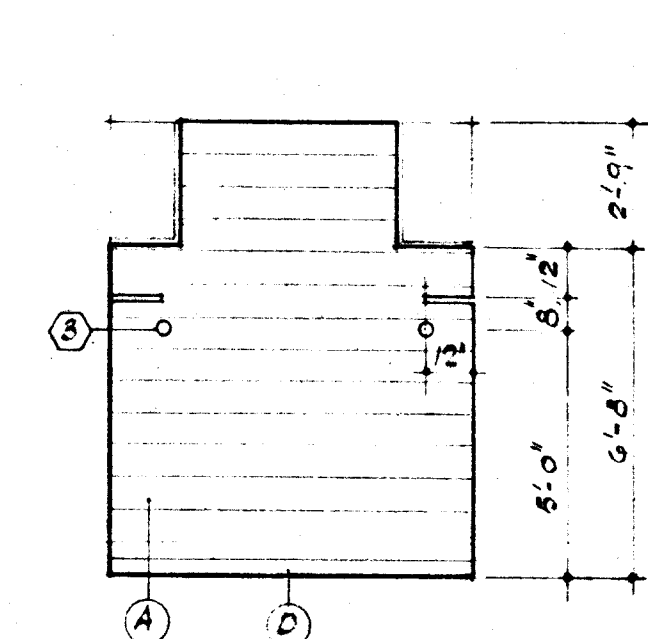
26 EAST WALL - KITCHEN NO. 8



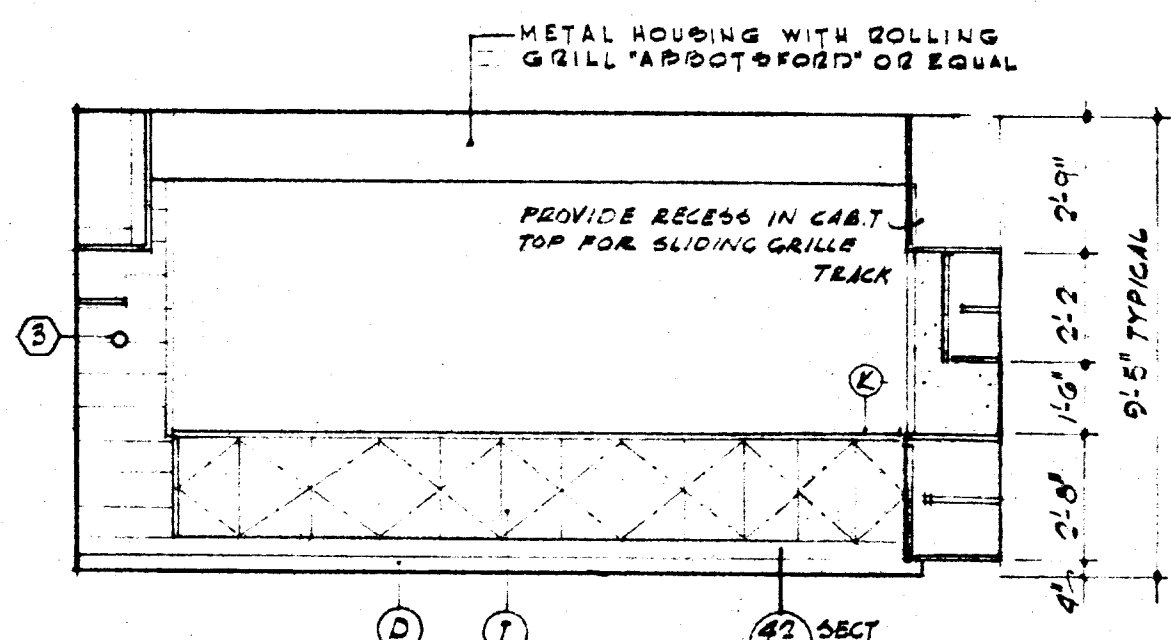
27 WEST WALL - COATS NO. 7



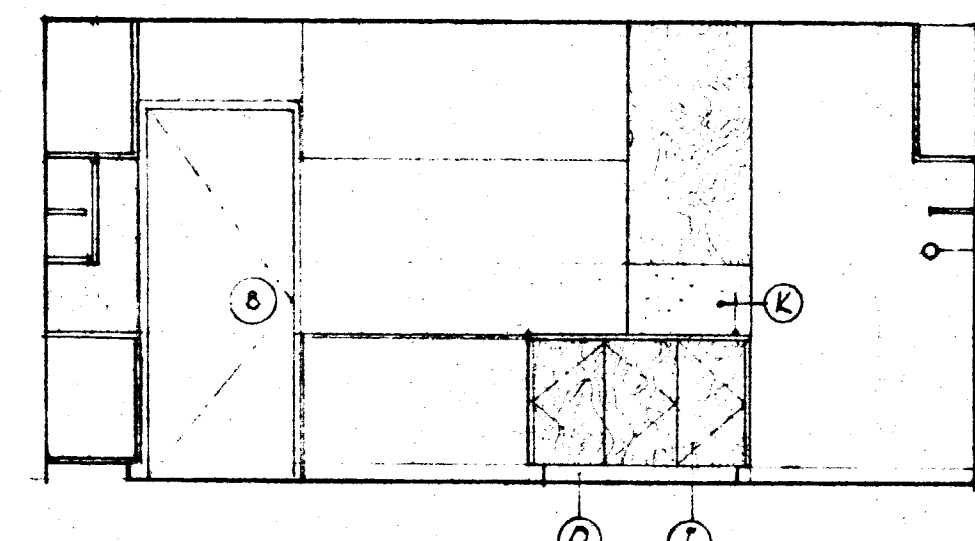
28 EAST WALL - COATS NO. 7



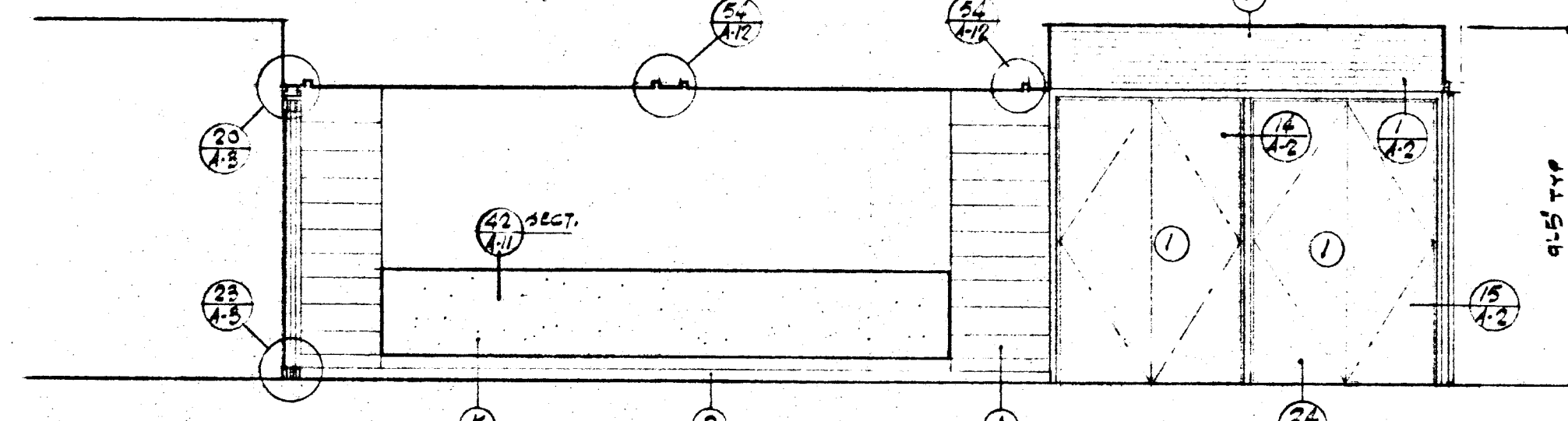
29 NORTH WALL - COATS NO. 7



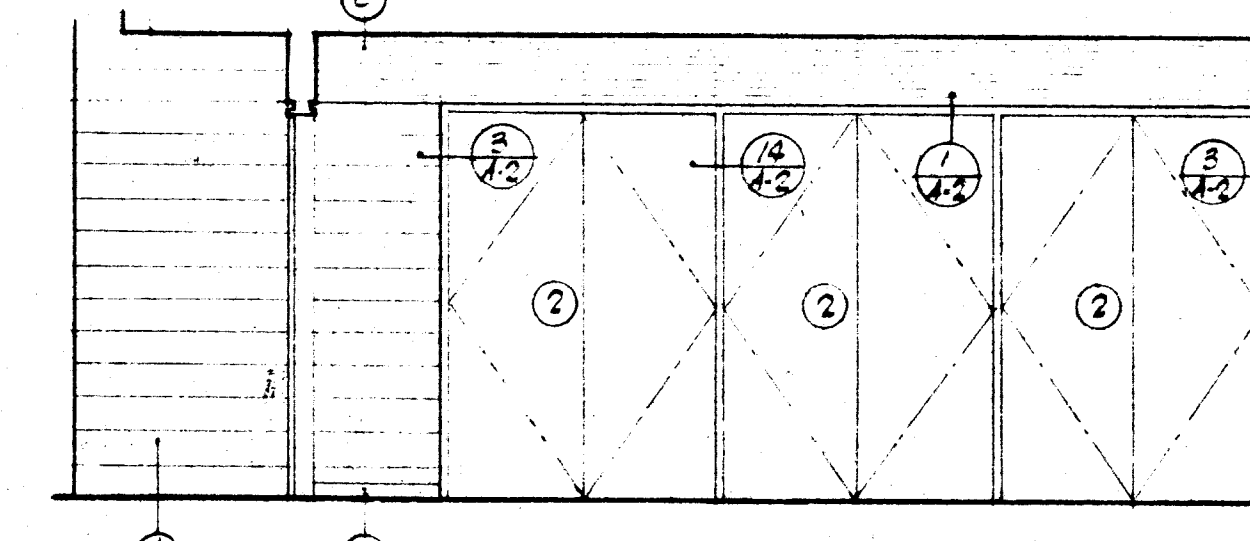
30 SOUTH WALL - KITCHEN NO. 8



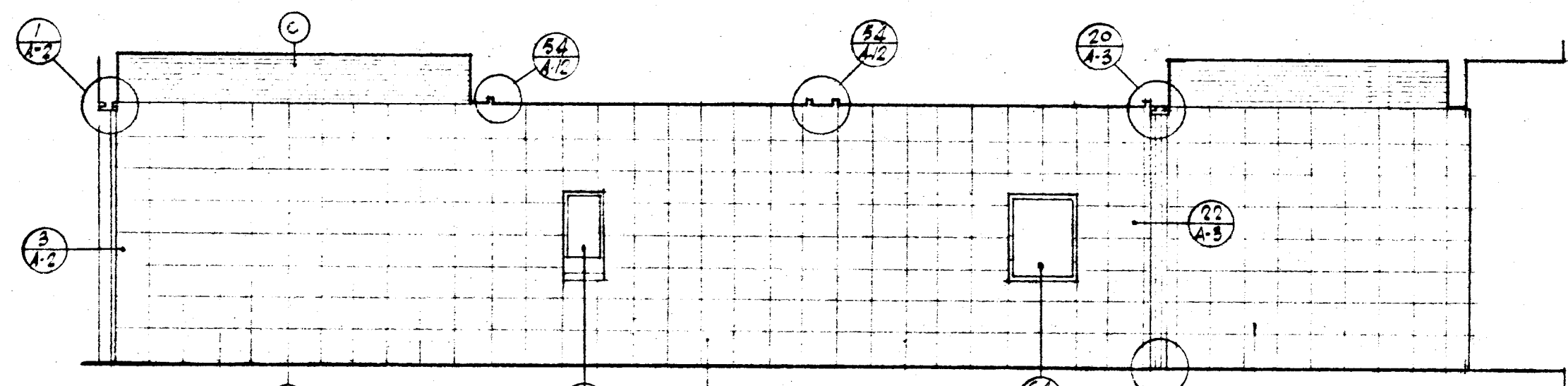
31 NORTH WALL - KITCHEN NO. 8



32 NORTH WALL - FOYER NO. 6

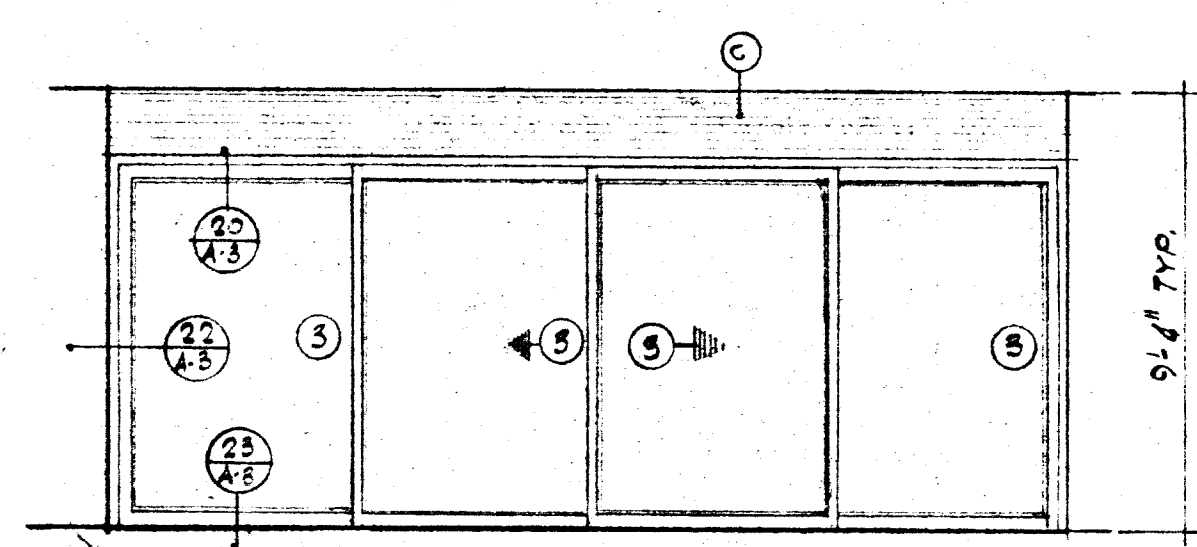


33 EAST WALL - FOYER NO. 6

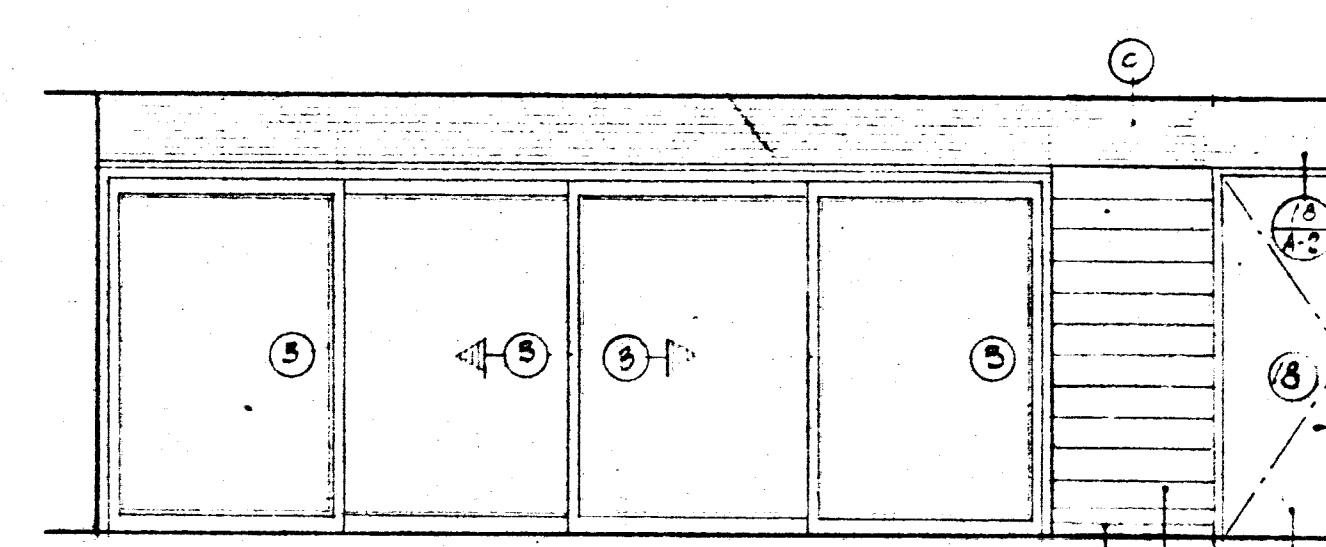


34 SOUTH WALL - FOYER NO. 6

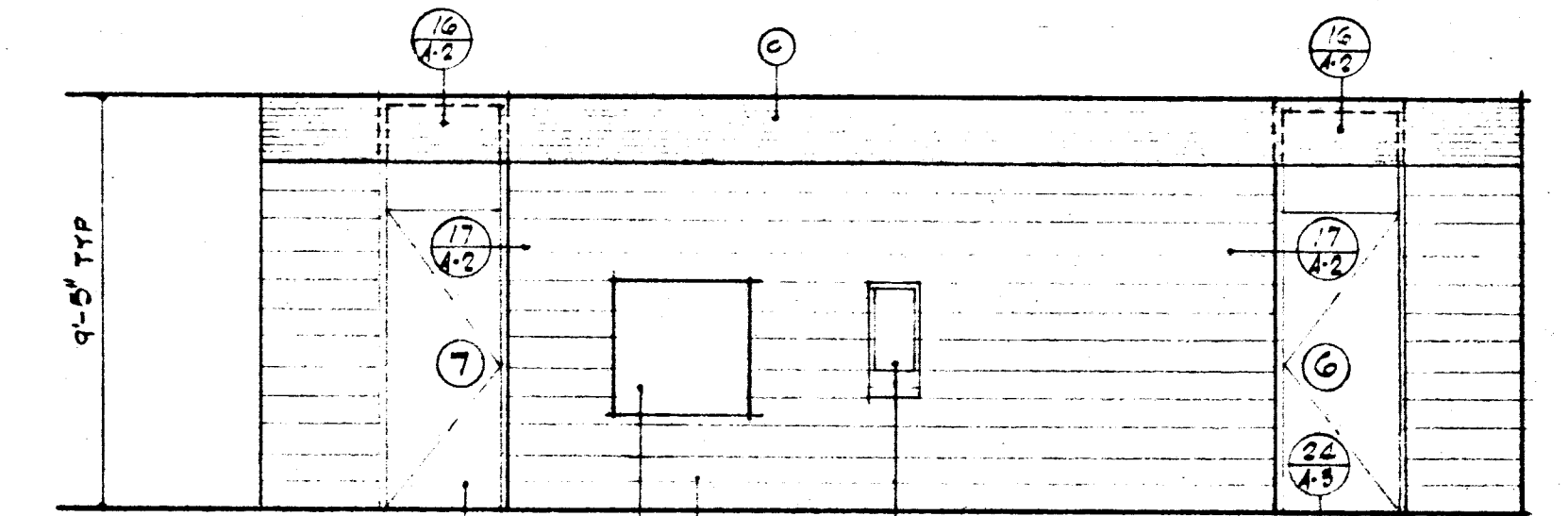
PRECAST CONG. FIN. 1/2\"/>



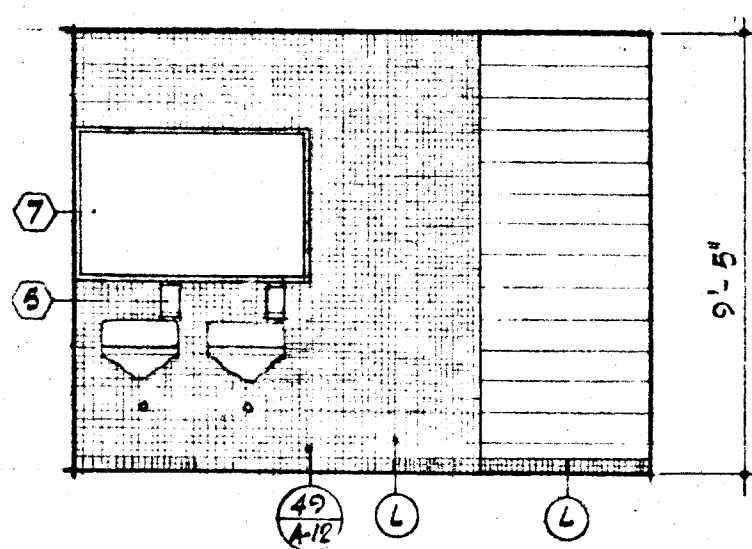
35 WEST WALL - FOYER NO. 6



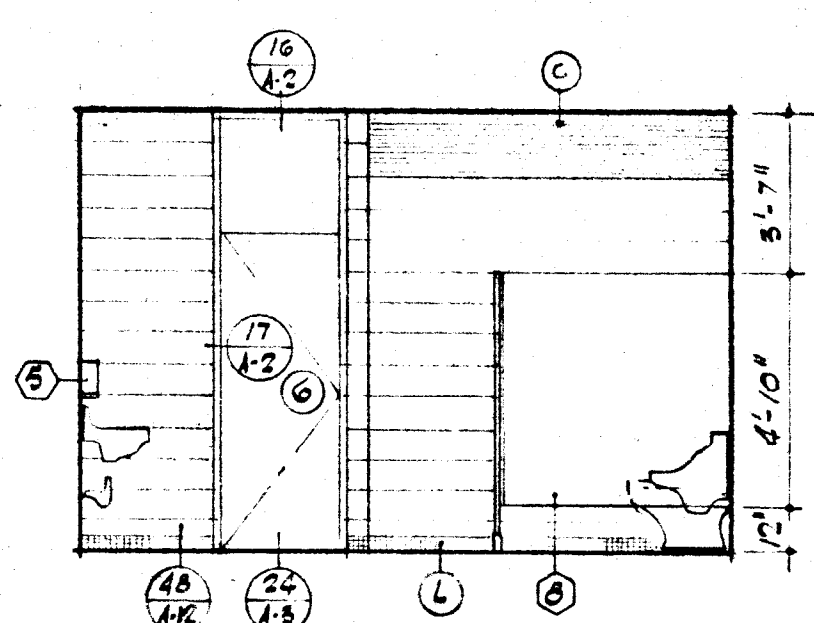
36 EAST WALL - GARDEN



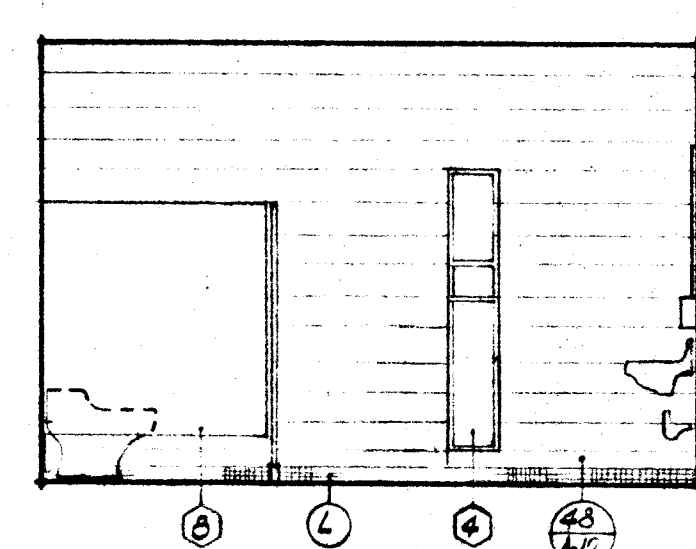
37 SOUTH WALL - GARDEN



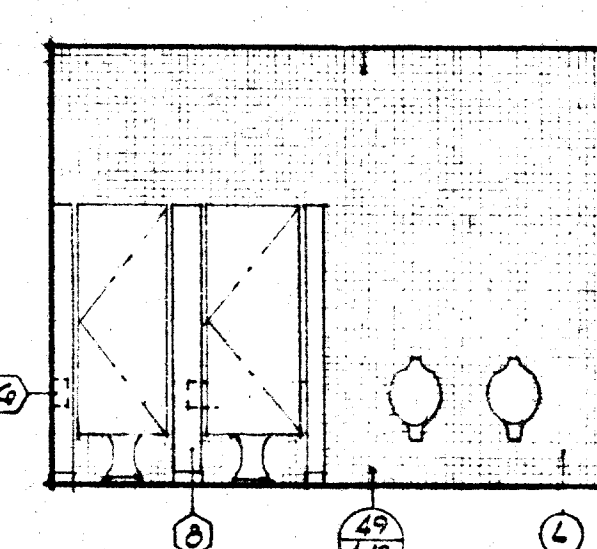
38 WEST WALL - MEN'S TOILET NO. 12



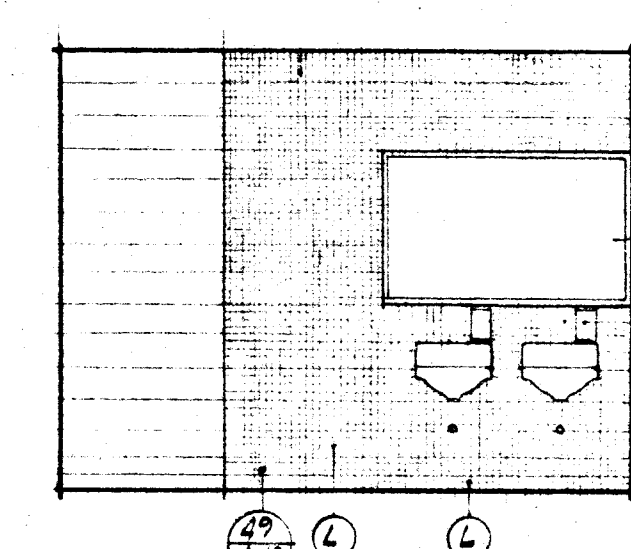
39 NORTH WALL - MEN'S TOILET NO. 12



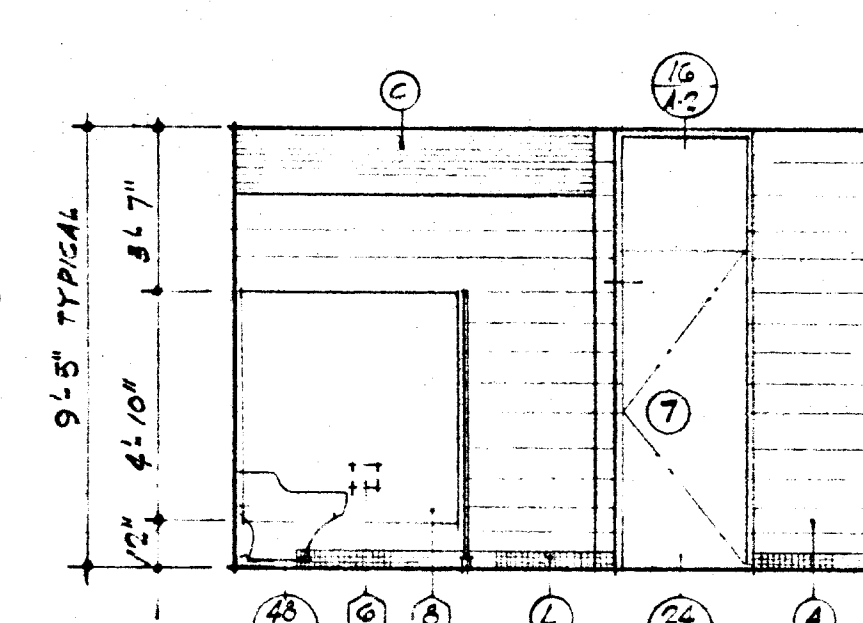
40 SOUTH WALL - MEN'S TOILET NO. 12



41 EAST WALL - MEN'S TOILET NO. 12



42 EAST WALL - WOMEN'S TOILET NO. 11



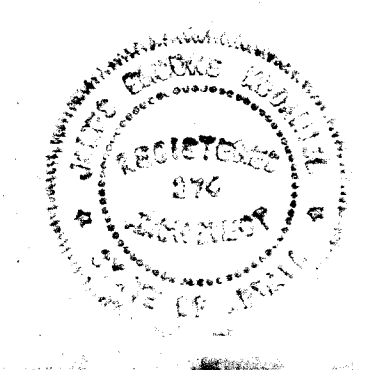
43 NORTH WALL - WOMEN'S TOILET NO. 11

**WALL MATERIAL LIST & CODE**

- 1 - 8\"/>
- 2 - 5/8\"/>
- 3 - GLU-LAM BEAM PAINT
- 4 - 4\"/>
- 5 - GLU-LAM POST PAINT
- 6 - 1/4\"/>
- 7 - 1/4\"/>
- 8 - 1/2\"/>
- 9 - 1/2\"/>
- 10 - 1/2\"/>
- 11 - 1/2\"/>
- 12 - 1/2\"/>
- 13 - 1/2\"/>
- 14 - 1/2\"/>
- 15 - 1/2\"/>
- 16 - 1/2\"/>
- 17 - 1/2\"/>
- 18 - 1/2\"/>
- 19 - 1/2\"/>
- 20 - 1/2\"/>
- 21 - 1/2\"/>
- 22 - 1/2\"/>
- 23 - 1/2\"/>
- 24 - 1/2\"/>
- 25 - 1/2\"/>
- 26 - 1/2\"/>
- 27 - 1/2\"/>
- 28 - 1/2\"/>
- 29 - 1/2\"/>
- 30 - 1/2\"/>
- 31 - 1/2\"/>
- 32 - 1/2\"/>
- 33 - 1/2\"/>
- 34 - 1/2\"/>
- 35 - 1/2\"/>
- 36 - 1/2\"/>
- 37 - 1/2\"/>
- 38 - 1/2\"/>
- 39 - 1/2\"/>
- 40 - 1/2\"/>
- 41 - 1/2\"/>
- 42 - 1/2\"/>
- 43 - 1/2\"/>
- 44 - 1/2\"/>
- 45 - 1/2\"/>
- 46 - 1/2\"/>
- 47 - 1/2\"/>
- 48 - 1/2\"/>
- 49 - 1/2\"/>
- 50 - 1/2\"/>
- 51 - 1/2\"/>
- 52 - 1/2\"/>
- 53 - 1/2\"/>
- 54 - 1/2\"/>
- 55 - 1/2\"/>
- 56 - 1/2\"/>
- 57 - 1/2\"/>
- 58 - 1/2\"/>
- 59 - 1/2\"/>
- 60 - 1/2\"/>
- 61 - 1/2\"/>
- 62 - 1/2\"/>
- 63 - 1/2\"/>
- 64 - 1/2\"/>
- 65 - 1/2\"/>
- 66 - 1/2\"/>
- 67 - 1/2\"/>
- 68 - 1/2\"/>
- 69 - 1/2\"/>
- 70 - 1/2\"/>
- 71 - 1/2\"/>
- 72 - 1/2\"/>
- 73 - 1/2\"/>
- 74 - 1/2\"/>
- 75 - 1/2\"/>
- 76 - 1/2\"/>
- 77 - 1/2\"/>
- 78 - 1/2\"/>
- 79 - 1/2\"/>
- 80 - 1/2\"/>
- 81 - 1/2\"/>
- 82 - 1/2\"/>
- 83 - 1/2\"/>
- 84 - 1/2\"/>
- 85 - 1/2\"/>
- 86 - 1/2\"/>
- 87 - 1/2\"/>
- 88 - 1/2\"/>
- 89 - 1/2\"/>
- 90 - 1/2\"/>
- 91 - 1/2\"/>
- 92 - 1/2\"/>
- 93 - 1/2\"/>
- 94 - 1/2\"/>
- 95 - 1/2\"/>
- 96 - 1/2\"/>
- 97 - 1/2\"/>
- 98 - 1/2\"/>
- 99 - 1/2\"/>
- 100 - 1/2\"/>

**KITCHEN & BATHROOM EQUIP**

- 1 - RANGE & HOOD W/ VENT, TAPPAN EHV-2-96 OR EQUAL
- 2 - REFRIGERATOR, TAPPAN FS-524
- 3 - 2\"/>
- 4 - 8\"/>
- 5 - SOAP DISPENSERS, BOBRICK NO. 8-1245 OR EQUAL
- 6 - TOILET TISSUE HOLDERS, SCOTT #94 OR EQUAL
- 7 - 1/4\"/>
- 8 - STAINLESS STEEL TUB, 30\"/>
- 9 - ANY METAL, FLOOR MOUNTED PARTITIONS OR EQUAL



**im**  
**via james brooks mcdaniel · architect**  
 maryland parkway & boulevard du montparnasse  
 382-4350

Job title: RECREATION CENTER  
 CITY OF LAS VEGAS  
 LAS VEGAS, NEVADA

drawn by: D.O.B.C.  
 checked by: J.D.H.  
 job number: 64-14  
 scale: 1/4\"/>

513-27D INTERIOR ELEVATIONS  
 45 PUNT DRAWINGS MAY 5 1964  
 sheet title: \_\_\_\_\_  
 sheet number: \_\_\_\_\_