

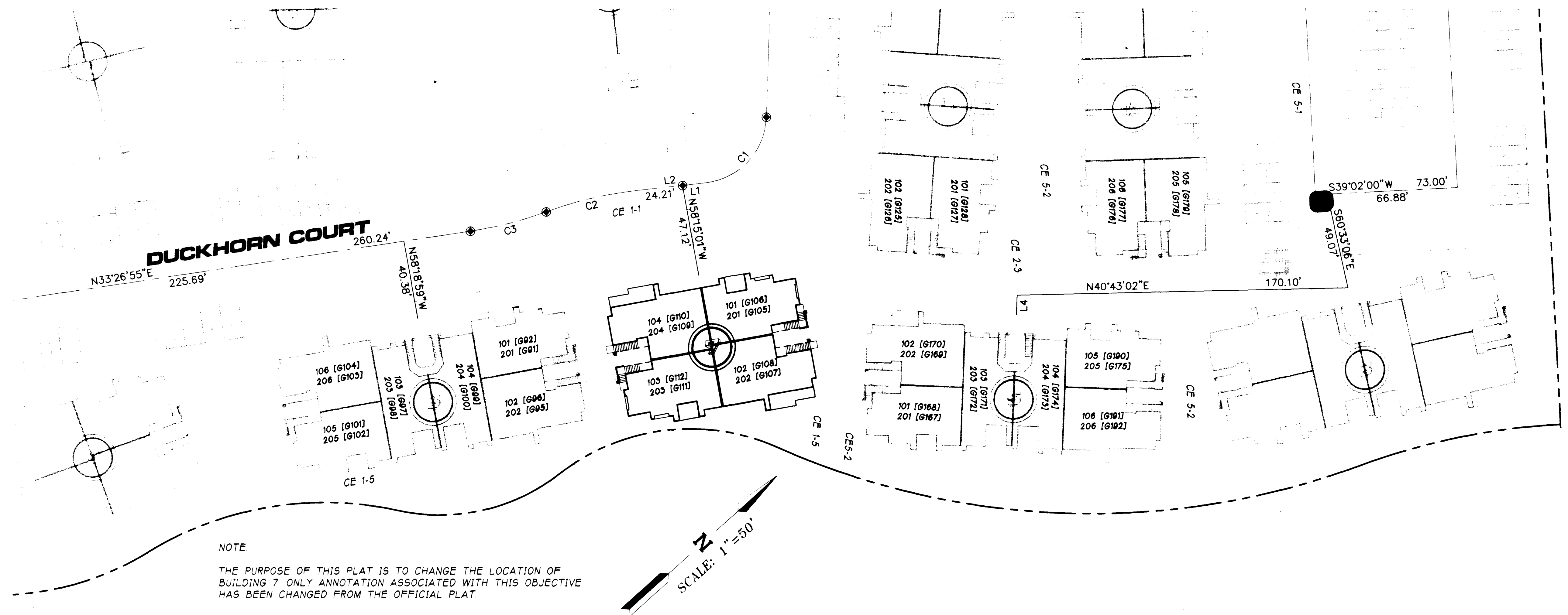
070926

01154

# THE AMENDED PLAT OF A PORTION OF NORTH HALF PARCEL H - VILLAGE 3

A COMMON INTEREST OWNERSHIP (CONDOMINIUM) SUBDIVISION

SITUATE IN THE CITY OF LAS VEGAS, CLARK COUNTY, NEVADA BEING A PORTION OF THE OFFICIAL PLAT SHOWN IN BOOK 78 OF PLATS ON PAGE 65,  
ALSO BEING A PORTION OF SECTION 30, TOWNSHIP 20 SOUTH, RANGE 60 EAST, M.D.M.



**LINE DATA TABLE**

No.	BEARING	DISTANCE
L1	N35°36'27"E	11.90'
L2	N35°36'27"E	36.11'
L3	S39°02'00"W	6.12'
L4	N45°56'34"W	10.00'

**CURVE DATA TABLE**

No.	RADIUS	DELTA	LENGTH	TANGENT
C1	35.00'	81°51'10"	50.00'	30.35'
C2	200.00'	13°38'37"	47.62'	23.93'
C3	200.00'	11°29'04"	40.09'	20.11'

**LEGEND**

- SET 5/8" REBAR W/ ALUM. CAP PLS 5878
- SET 5/8" REBAR W/ ALUM. CAP & TIES PLS 5878
- FOUND 5/8" REBAR W/ ALUM. CAP PLS 5878
- FOUND ALUM. CAP W/TIES STAMPED PLS 9390
- FOUND ALUM. CAP STAMPED PLS 9390
- OVERALL PARCEL BOUNDARY LINE
- INTERIOR CURB LINE
- STREET CENTERLINE
- EASEMENT LINE
- PHASE LINE
- CE 1-2 COMMON ELEMENT NUMBER
- 23 BUILDING NUMBER  
1 BUILDING / 3 UNITS
- C19 CURVE TABLE REFERENCE NUMBER
- L1 LINE TABLE REFERENCE NUMBER
- 6 PHASE NUMBER

