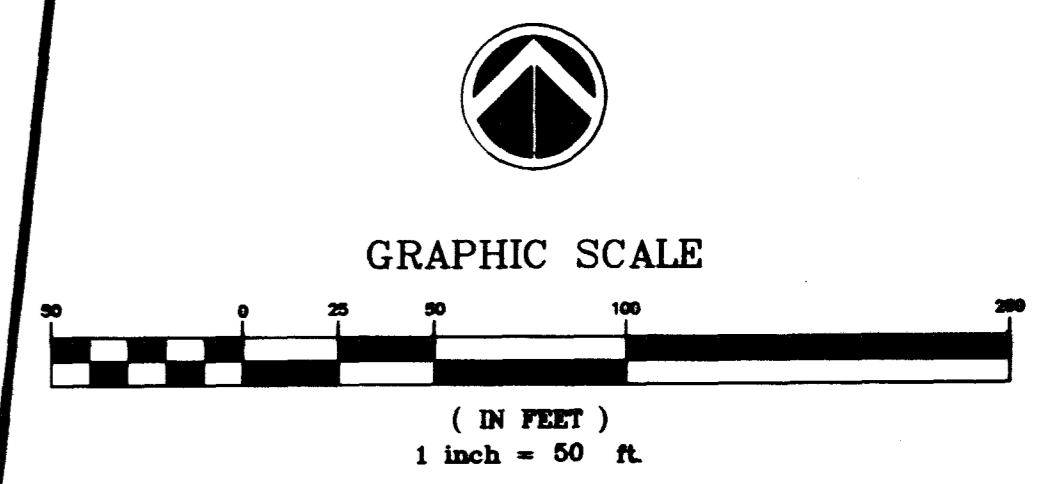
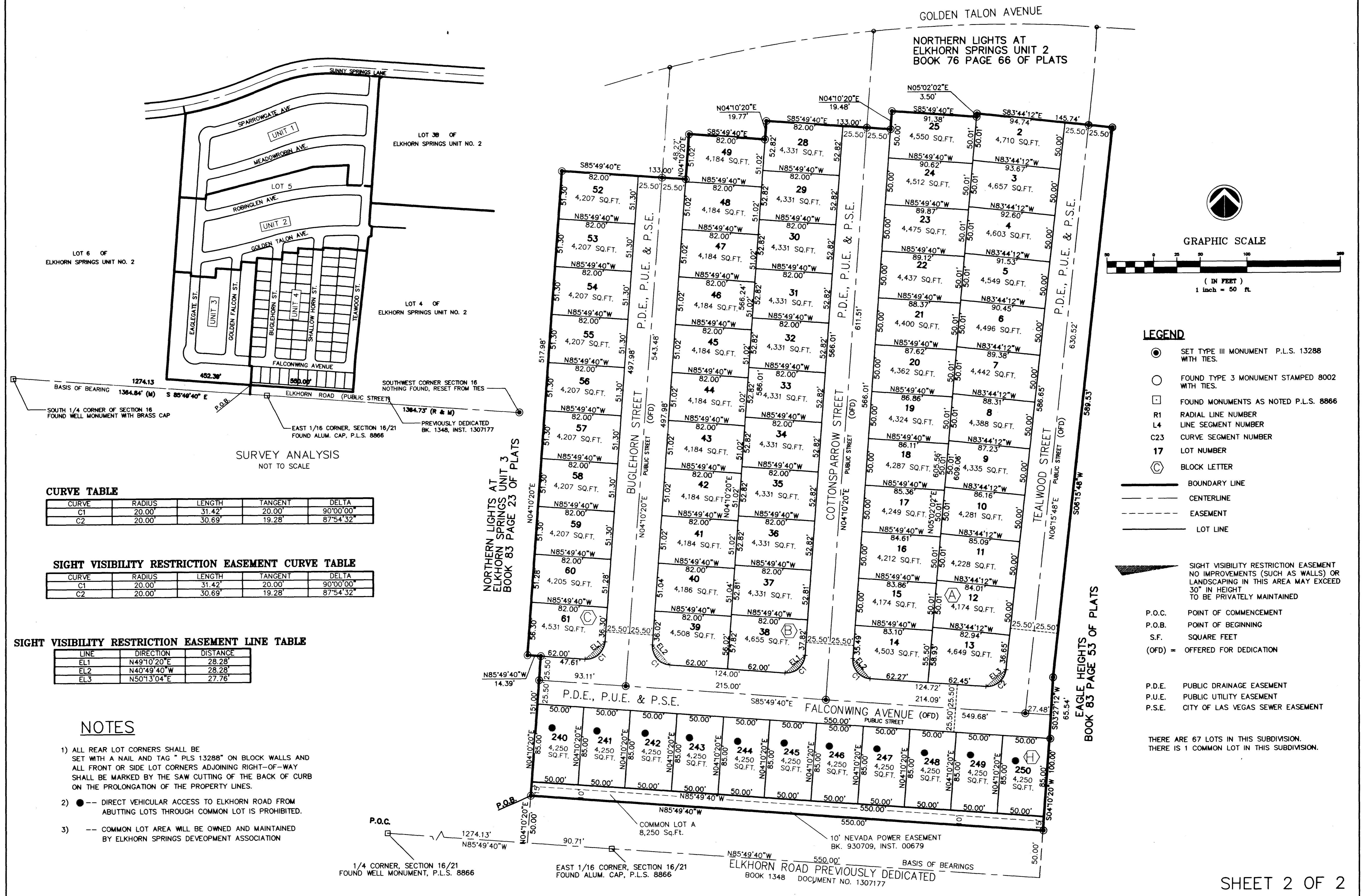


980819

00914

FINAL MAP OF NORTHERN LIGHTS AT ELKHORN SPRINGS UNIT 4

A PORTION OF LOT 5 OF ELKHORN SPRINGS UNIT NO. 2 BOOK 74, PAGE 01, OF PLATS; SECTION 16,
TOWNSHIP 19 SOUTH, RANGE 60 EAST, M.D.M. CITY OF LAS VEGAS, CLARK COUNTY, NEVADA



- LEGEND**
- SET TYPE III MONUMENT P.L.S. 13288 WITH TIES.
 - FOUND TYPE 3 MONUMENT STAMPED 8002 WITH TIES.
 - FOUND MONUMENTS AS NOTED P.L.S. 8866
 - R1 RADIAL LINE NUMBER
 - L4 LINE SEGMENT NUMBER
 - C23 CURVE SEGMENT NUMBER
 - 17 LOT NUMBER
 - ⊙ BLOCK LETTER
 - BOUNDARY LINE
 - - - CENTERLINE
 - - - EASEMENT
 - LOT LINE
 - ▲ SIGHT VISIBILITY RESTRICTION EASEMENT NO IMPROVEMENTS (SUCH AS WALLS) OR LANDSCAPING IN THIS AREA MAY EXCEED 30" IN HEIGHT TO BE PRIVATELY MAINTAINED
 - P.O.C. POINT OF COMMENCEMENT
 - P.O.B. POINT OF BEGINNING
 - S.F. SQUARE FEET
 - (OFD) = OFFERED FOR DEDICATION
 - P.D.E. PUBLIC DRAINAGE EASEMENT
 - P.U.E. PUBLIC UTILITY EASEMENT
 - P.S.E. CITY OF LAS VEGAS SEWER EASEMENT

CURVE TABLE

CURVE	RADIUS	LENGTH	TANGENT	DELTA
C1	20.00'	31.42'	20.00'	90°00'00"
C2	20.00'	30.69'	19.28'	87°54'32"

SIGHT VISIBILITY RESTRICTION EASEMENT CURVE TABLE

CURVE	RADIUS	LENGTH	TANGENT	DELTA
C1	20.00'	31.42'	20.00'	90°00'00"
C2	20.00'	30.69'	19.28'	87°54'32"

SIGHT VISIBILITY RESTRICTION EASEMENT LINE TABLE

LINE	DIRECTION	DISTANCE
EL1	N49°10'20"E	28.28'
EL2	N40°49'40"W	28.28'
EL3	N50°13'04"E	27.76'

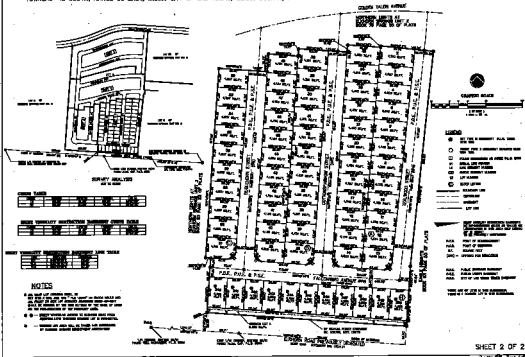
- NOTES**
- ALL REAR LOT CORNERS SHALL BE SET WITH A NAIL AND TAG " PLS 13288" ON BLOCK WALLS AND ALL FRONT OR SIDE LOT CORNERS ADJOINING RIGHT-OF-WAY SHALL BE MARKED BY THE SAW CUTTING OF THE BACK OF CURB ON THE PROLONGATION OF THE PROPERTY LINES.
 - DIRECT VEHICULAR ACCESS TO ELKHORN ROAD FROM ABUTTING LOTS THROUGH COMMON LOT IS PROHIBITED.
 - COMMON LOT AREA WILL BE OWNED AND MAINTAINED BY ELKHORN SPRINGS DEVELOPMENT ASSOCIATION

THERE ARE 67 LOTS IN THIS SUBDIVISION.
THERE IS 1 COMMON LOT IN THIS SUBDIVISION.

Book 85 Page 49
4460-4

FINAL MAP OF NORTHERN LIGHTS AT ELKHORN SPRINGS UNIT 4

A PORTION OF LOT 3 OF ELKHORN SPRINGS UNIT NO. 2 BOOK 74, PAGE 05, OF PLATS, SECTION 16,
TOWNSHIP 18 SOUTH, RANGE 60 EAST, M.D.M. CITY OF LAS VEGAS, CLARK COUNTY, NEVADA



UNIT TABLE

UNIT NO.	FLOOR	AREA (SQ. FT.)	TYPE
101	1ST	1,200	STUDIO
102	1ST	1,200	STUDIO
103	1ST	1,200	STUDIO
104	1ST	1,200	STUDIO
105	1ST	1,200	STUDIO
106	1ST	1,200	STUDIO
107	1ST	1,200	STUDIO
108	1ST	1,200	STUDIO
109	1ST	1,200	STUDIO
110	1ST	1,200	STUDIO
111	1ST	1,200	STUDIO
112	1ST	1,200	STUDIO
113	1ST	1,200	STUDIO
114	1ST	1,200	STUDIO
115	1ST	1,200	STUDIO
116	1ST	1,200	STUDIO
117	1ST	1,200	STUDIO
118	1ST	1,200	STUDIO
119	1ST	1,200	STUDIO
120	1ST	1,200	STUDIO
121	1ST	1,200	STUDIO
122	1ST	1,200	STUDIO
123	1ST	1,200	STUDIO
124	1ST	1,200	STUDIO
125	1ST	1,200	STUDIO
126	1ST	1,200	STUDIO
127	1ST	1,200	STUDIO
128	1ST	1,200	STUDIO
129	1ST	1,200	STUDIO
130	1ST	1,200	STUDIO
131	1ST	1,200	STUDIO
132	1ST	1,200	STUDIO
133	1ST	1,200	STUDIO
134	1ST	1,200	STUDIO
135	1ST	1,200	STUDIO
136	1ST	1,200	STUDIO
137	1ST	1,200	STUDIO
138	1ST	1,200	STUDIO
139	1ST	1,200	STUDIO
140	1ST	1,200	STUDIO
141	1ST	1,200	STUDIO
142	1ST	1,200	STUDIO
143	1ST	1,200	STUDIO
144	1ST	1,200	STUDIO
145	1ST	1,200	STUDIO
146	1ST	1,200	STUDIO
147	1ST	1,200	STUDIO
148	1ST	1,200	STUDIO
149	1ST	1,200	STUDIO
150	1ST	1,200	STUDIO
151	1ST	1,200	STUDIO
152	1ST	1,200	STUDIO
153	1ST	1,200	STUDIO
154	1ST	1,200	STUDIO
155	1ST	1,200	STUDIO
156	1ST	1,200	STUDIO
157	1ST	1,200	STUDIO
158	1ST	1,200	STUDIO
159	1ST	1,200	STUDIO
160	1ST	1,200	STUDIO
161	1ST	1,200	STUDIO
162	1ST	1,200	STUDIO
163	1ST	1,200	STUDIO
164	1ST	1,200	STUDIO
165	1ST	1,200	STUDIO
166	1ST	1,200	STUDIO
167	1ST	1,200	STUDIO
168	1ST	1,200	STUDIO
169	1ST	1,200	STUDIO
170	1ST	1,200	STUDIO
171	1ST	1,200	STUDIO
172	1ST	1,200	STUDIO
173	1ST	1,200	STUDIO
174	1ST	1,200	STUDIO
175	1ST	1,200	STUDIO
176	1ST	1,200	STUDIO
177	1ST	1,200	STUDIO
178	1ST	1,200	STUDIO
179	1ST	1,200	STUDIO
180	1ST	1,200	STUDIO
181	1ST	1,200	STUDIO
182	1ST	1,200	STUDIO
183	1ST	1,200	STUDIO
184	1ST	1,200	STUDIO
185	1ST	1,200	STUDIO
186	1ST	1,200	STUDIO
187	1ST	1,200	STUDIO
188	1ST	1,200	STUDIO
189	1ST	1,200	STUDIO
190	1ST	1,200	STUDIO
191	1ST	1,200	STUDIO
192	1ST	1,200	STUDIO
193	1ST	1,200	STUDIO
194	1ST	1,200	STUDIO
195	1ST	1,200	STUDIO
196	1ST	1,200	STUDIO
197	1ST	1,200	STUDIO
198	1ST	1,200	STUDIO
199	1ST	1,200	STUDIO
200	1ST	1,200	STUDIO

UNIT TABLE

UNIT NO.	FLOOR	AREA (SQ. FT.)	TYPE
201	2ND	1,200	STUDIO
202	2ND	1,200	STUDIO
203	2ND	1,200	STUDIO
204	2ND	1,200	STUDIO
205	2ND	1,200	STUDIO
206	2ND	1,200	STUDIO
207	2ND	1,200	STUDIO
208	2ND	1,200	STUDIO
209	2ND	1,200	STUDIO
210	2ND	1,200	STUDIO
211	2ND	1,200	STUDIO
212	2ND	1,200	STUDIO
213	2ND	1,200	STUDIO
214	2ND	1,200	STUDIO
215	2ND	1,200	STUDIO
216	2ND	1,200	STUDIO
217	2ND	1,200	STUDIO
218	2ND	1,200	STUDIO
219	2ND	1,200	STUDIO
220	2ND	1,200	STUDIO
221	2ND	1,200	STUDIO
222	2ND	1,200	STUDIO
223	2ND	1,200	STUDIO
224	2ND	1,200	STUDIO
225	2ND	1,200	STUDIO
226	2ND	1,200	STUDIO
227	2ND	1,200	STUDIO
228	2ND	1,200	STUDIO
229	2ND	1,200	STUDIO
230	2ND	1,200	STUDIO
231	2ND	1,200	STUDIO
232	2ND	1,200	STUDIO
233	2ND	1,200	STUDIO
234	2ND	1,200	STUDIO
235	2ND	1,200	STUDIO
236	2ND	1,200	STUDIO
237	2ND	1,200	STUDIO
238	2ND	1,200	STUDIO
239	2ND	1,200	STUDIO
240	2ND	1,200	STUDIO
241	2ND	1,200	STUDIO
242	2ND	1,200	STUDIO
243	2ND	1,200	STUDIO
244	2ND	1,200	STUDIO
245	2ND	1,200	STUDIO
246	2ND	1,200	STUDIO
247	2ND	1,200	STUDIO
248	2ND	1,200	STUDIO
249	2ND	1,200	STUDIO
250	2ND	1,200	STUDIO
251	2ND	1,200	STUDIO
252	2ND	1,200	STUDIO
253	2ND	1,200	STUDIO
254	2ND	1,200	STUDIO
255	2ND	1,200	STUDIO
256	2ND	1,200	STUDIO
257	2ND	1,200	STUDIO
258	2ND	1,200	STUDIO
259	2ND	1,200	STUDIO
260	2ND	1,200	STUDIO
261	2ND	1,200	STUDIO
262	2ND	1,200	STUDIO
263	2ND	1,200	STUDIO
264	2ND	1,200	STUDIO
265	2ND	1,200	STUDIO
266	2ND	1,200	STUDIO
267	2ND	1,200	STUDIO
268	2ND	1,200	STUDIO
269	2ND	1,200	STUDIO
270	2ND	1,200	STUDIO
271	2ND	1,200	STUDIO
272	2ND	1,200	STUDIO
273	2ND	1,200	STUDIO
274	2ND	1,200	STUDIO
275	2ND	1,200	STUDIO
276	2ND	1,200	STUDIO
277	2ND	1,200	STUDIO
278	2ND	1,200	STUDIO
279	2ND	1,200	STUDIO
280	2ND	1,200	STUDIO
281	2ND	1,200	STUDIO
282	2ND	1,200	STUDIO
283	2ND	1,200	STUDIO
284	2ND	1,200	STUDIO
285	2ND	1,200	STUDIO
286	2ND	1,200	STUDIO
287	2ND	1,200	STUDIO
288	2ND	1,200	STUDIO
289	2ND	1,200	STUDIO
290	2ND	1,200	STUDIO
291	2ND	1,200	STUDIO
292	2ND	1,200	STUDIO
293	2ND	1,200	STUDIO
294	2ND	1,200	STUDIO
295	2ND	1,200	STUDIO
296	2ND	1,200	STUDIO
297	2ND	1,200	STUDIO
298	2ND	1,200	STUDIO
299	2ND	1,200	STUDIO
300	2ND	1,200	STUDIO

UNIT TABLE

UNIT NO.	FLOOR	AREA (SQ. FT.)	TYPE
301	3RD	1,200	STUDIO
302	3RD	1,200	STUDIO
303	3RD	1,200	STUDIO
304	3RD	1,200	STUDIO
305	3RD	1,200	STUDIO
306	3RD	1,200	STUDIO
307	3RD	1,200	STUDIO
308	3RD	1,200	STUDIO
309	3RD	1,200	STUDIO
310	3RD	1,200	STUDIO
311	3RD	1,200	STUDIO
312	3RD	1,200	STUDIO
313	3RD	1,200	STUDIO
314	3RD	1,200	STUDIO
315	3RD	1,200	STUDIO
316	3RD	1,200	STUDIO
317	3RD	1,200	STUDIO
318	3RD	1,200	STUDIO
319	3RD	1,200	STUDIO
320	3RD	1,200	STUDIO
321	3RD	1,200	STUDIO
322	3RD	1,200	STUDIO
323	3RD	1,200	STUDIO
324	3RD	1,200	STUDIO
325	3RD	1,200	STUDIO
326	3RD	1,200	STUDIO
327	3RD	1,200	STUDIO
328	3RD	1,200	STUDIO
329	3RD	1,200	STUDIO
330	3RD	1,200	STUDIO
331	3RD	1,200	STUDIO
332	3RD	1,200	STUDIO
333	3RD	1,200	STUDIO
334	3RD	1,200	STUDIO
335	3RD	1,200	STUDIO
336	3RD	1,200	STUDIO
337	3RD	1,200	STUDIO
338	3RD	1,200	STUDIO
339	3RD	1,200	STUDIO
340	3RD	1,200	STUDIO
341	3RD	1,200	STUDIO
342	3RD	1,200	STUDIO
343	3RD	1,200	STUDIO
344	3RD	1,200	STUDIO
345	3RD	1,200	STUDIO
346	3RD	1,200	STUDIO
347	3RD	1,200	STUDIO
348	3RD	1,200	STUDIO
349	3RD	1,200	STUDIO
350	3RD	1,200	STUDIO
351	3RD	1,200	STUDIO
352	3RD	1,200	STUDIO
353	3RD	1,200	STUDIO
354	3RD	1,200	STUDIO
355	3RD	1,200	STUDIO
356	3RD	1,200	STUDIO
357	3RD	1,200	STUDIO
358	3RD	1,200	STUDIO
359	3RD	1,200	STUDIO
360	3RD	1,200	STUDIO
361	3RD	1,200	STUDIO
362	3RD	1,200	STUDIO
363	3RD	1,200	STUDIO
364	3RD	1,200	STUDIO
365	3RD	1,200	STUDIO
366	3RD	1,200	STUDIO
367	3RD	1,200	STUDIO
368	3RD	1,200	STUDIO
369	3RD	1,200	STUDIO</