

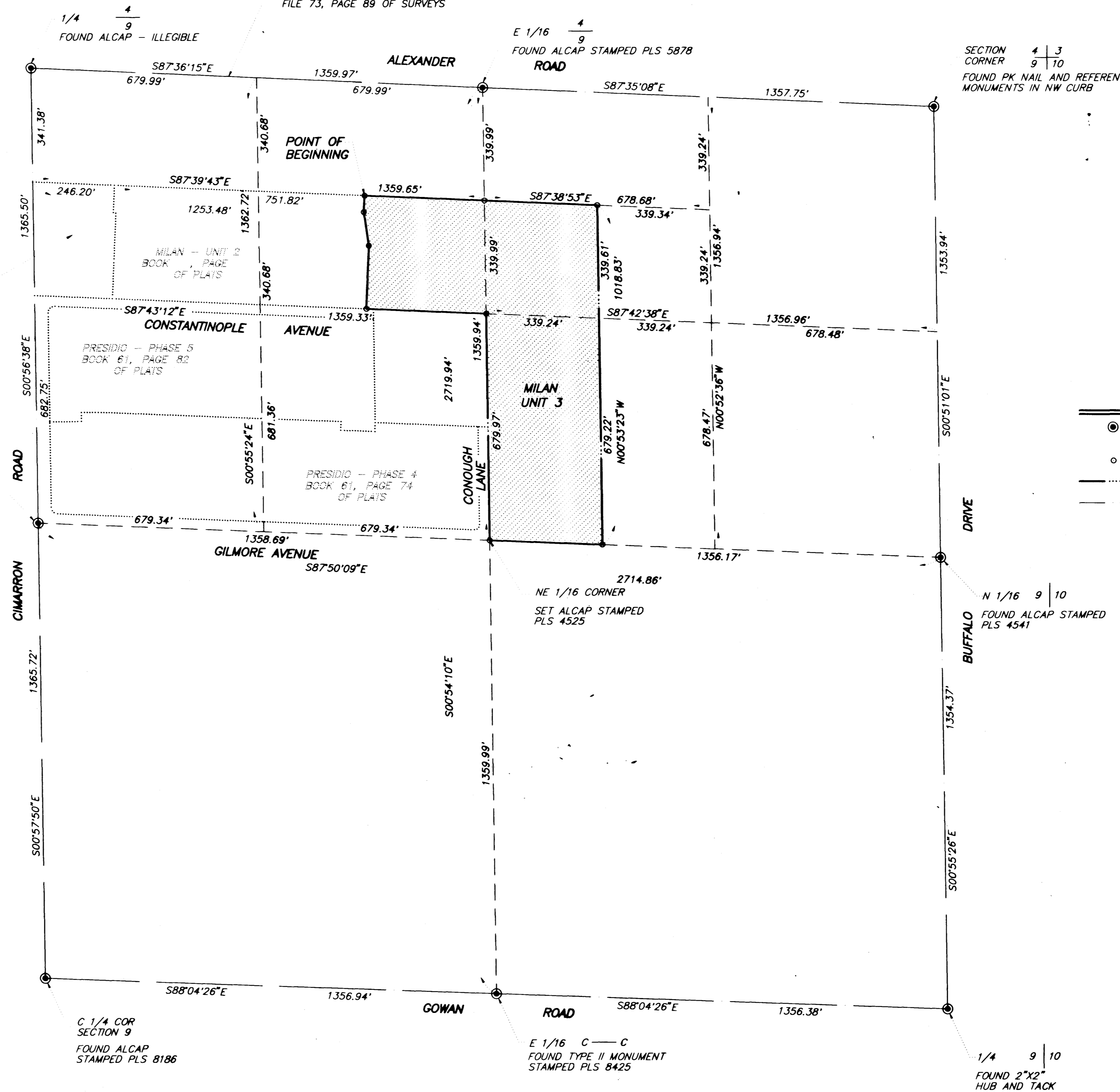
961016

01757

FINAL MAP OF MILAN - UNIT 3

BEING A SUBDIVISION OF A PORTION OF THE NORTH HALF (N 1/2) OF THE NORTHEAST QUARTER (NE 1/4) OF SECTION 9, TOWNSHIP 20 SOUTH, RANGE 60 EAST, M.D.M., CITY OF LAS VEGAS, CLARK COUNTY, NEVADA

BASIS OF BEARINGS
PER ANNEXATION MAP ON FILE IN
FILE 73, PAGE 89 OF SURVEYS



SECTION CORNER 4 | 3
9 | 10
FOUND PK NAIL AND REFERENCE MONUMENTS IN NW CURB

N 1/16 C
C
FOUND REBAR AND ALCAP STAMPED PLS 7755

SCALE: 1" = 200'

- LEGEND**
- FOUND MONUMENTATION AS SHOWN AND DESCRIBED
 - REFERENCE POINT
 - SUBDIVISION BOUNDARY LINE
 - - - STREET CENTERLINE

C 1/4 COR SECTION 9
FOUND ALCAP STAMPED PLS 8186

E 1/16 C—C
FOUND TYPE II MONUMENT STAMPED PLS 8425

1/4 9 | 10
FOUND 2"x2" HUB AND TACK

96016

01257

FINAL MAP OF MILAN - UNIT 3

BEING A SUBDIVISION OF A PORTION OF THE NORTH HALF (N 1/2) OF THE NORTHWEST QUARTER (NW 1/4) OF SECTION 8, TOWNSHIP 20 SOUTH, RANGE 20 EAST, MAIN, CITY OF LAS VEGAS, CLARK COUNTY, NEVADA.

