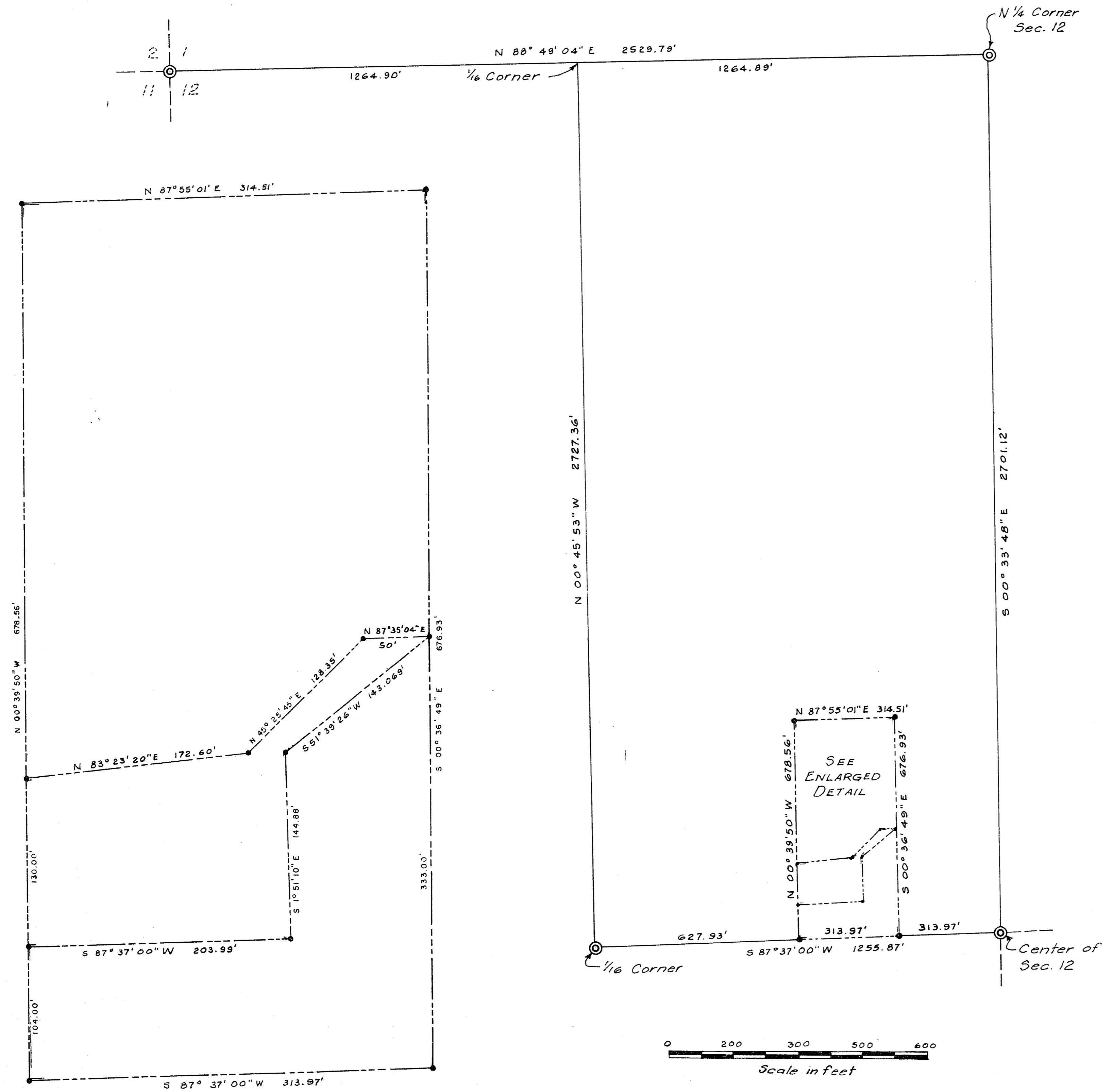


85-11



LEGEND

Basis of bearing East & West Centerline of Sec. 12, T.21S, R. 60E, M.D.B. & M. per Record of Survey Map filed in Book 5, page 35.

- Indicates concrete monuments set.
- ⊙ Monuments found.

ENGINEERS' CERTIFICATE

I, R.L. Kraemer, Registered Land Surveyor Nevada 1096 do hereby certify that this map is a true and correct Plat of the land surveyed by me at the instance of Edward Waskow, and located in the NW 1/4 Sec. 12, T.21S, R.60E, M.D.B. & M. Clark County, Nevada and this survey was completed on this 30th day of April, 1962. This is not intended to be a subdivision as per Subdivision Act, Section 5063, Nevada Compiled Laws, Supplement 1943-1949

R.L. Kraemer
R.L. Kraemer, RLS 1096, RPE 1349

289261

R. L. KRAEMER
5-3-62 4:13 P.
11 35
359
250 J.S.

MAP FOR RECORD OF SURVEY
FOR
EDWARD WASKOW
NW 1/4, SEC. 12, T. 21S, R. 60E
M. D. B. & M.
CLARK COUNTY, NEVADA
055-379