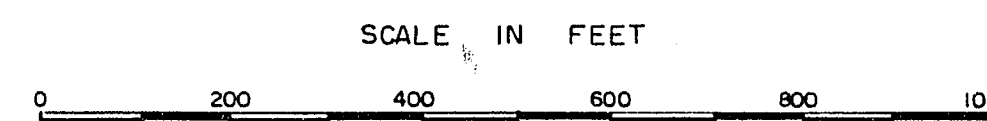
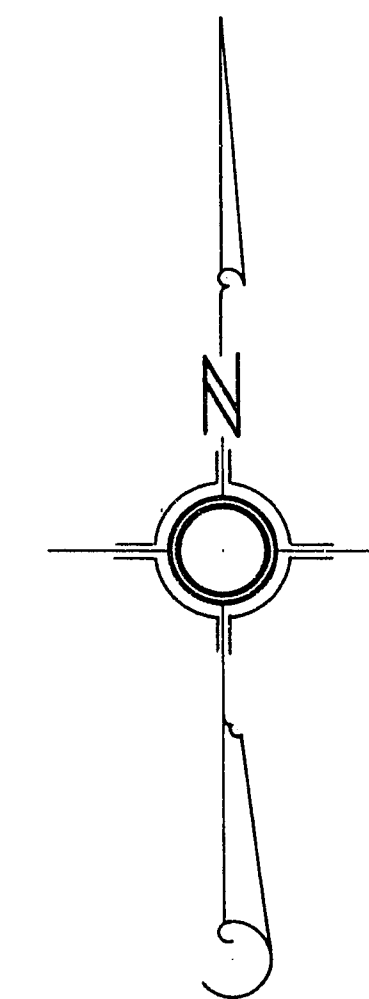
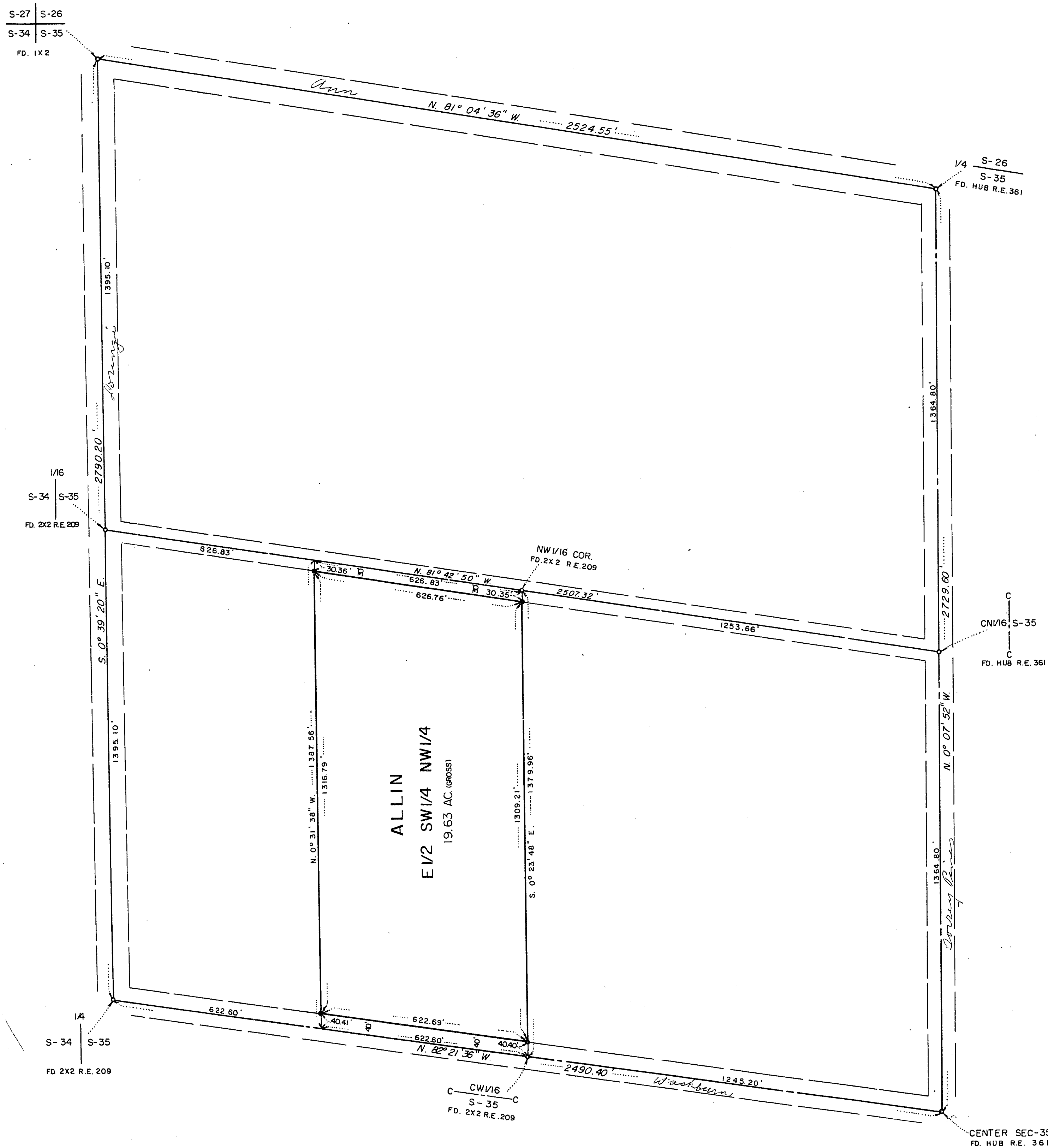


51-11



LEGEND

BASIS OF BEARING: (S. 0° 39' 20" E.) WEST LINE OF THE NW 1/4 SEC. 35, T. 19 S., R. 60 E., M. D. B. & M. FILE 1, PAGE 46, CLARK COUNTY RECORDERS OFFICE, CLARK COUNTY, NEVADA.

* INDICATES 2X2 HUB WITH TAG MARKED R.E. 560, SET AS SHOWN HEREON.

ENGINEER'S CERTIFICATE

I, L. E. TYSON, REGISTERED CIVIL ENGINEER AND LAND SURVEYOR NEVADA NO 560 DO HEREBY CERTIFY THAT THIS MAP IS A TRUE AND CORRECT PLAT OF THE LAND SURVEYED BY ME AT THE INSTANCE OF GERALDINE ALLIN, AND LOCATED IN THE NW 1/4 SEC. 35, T. 19 S., R. 60 E., M. D. B. & M. CLARK COUNTY, NEVADA AND COMPLETED ON THIS 18TH DAY OF JUNE, 1957. THIS SURVEY IS NOT A SUBDIVISION AS DEFINED IN THE PLANNING & ZONING LAW AS SHOWN IN 1943-1949 SUPP. NEVADA COMPILED LAWS.

L. E. Tyson
L. E. TYSON REG. CIVIL ENG. & LAND SURVEYOR NEV. 560

(SEAL)

NO. 109151
FILED AT CLARK COUNTY, NEV. BY
L. E. Tyson
6-27-57 1:51 P.M.
7 18
250 Deputy

109151
RECORDED AT THE REQUEST OF
L. E. Tyson
JUN 21 1957
133

MAP FOR RECORD OF SURVEY
FOR
GERALDINE ALLIN
NW 1/4 SEC. 35, T. 19 S., R. 60 E.
M.D.B. & M.
CLARK COUNTY, NEVADA

055-282
File 7 18