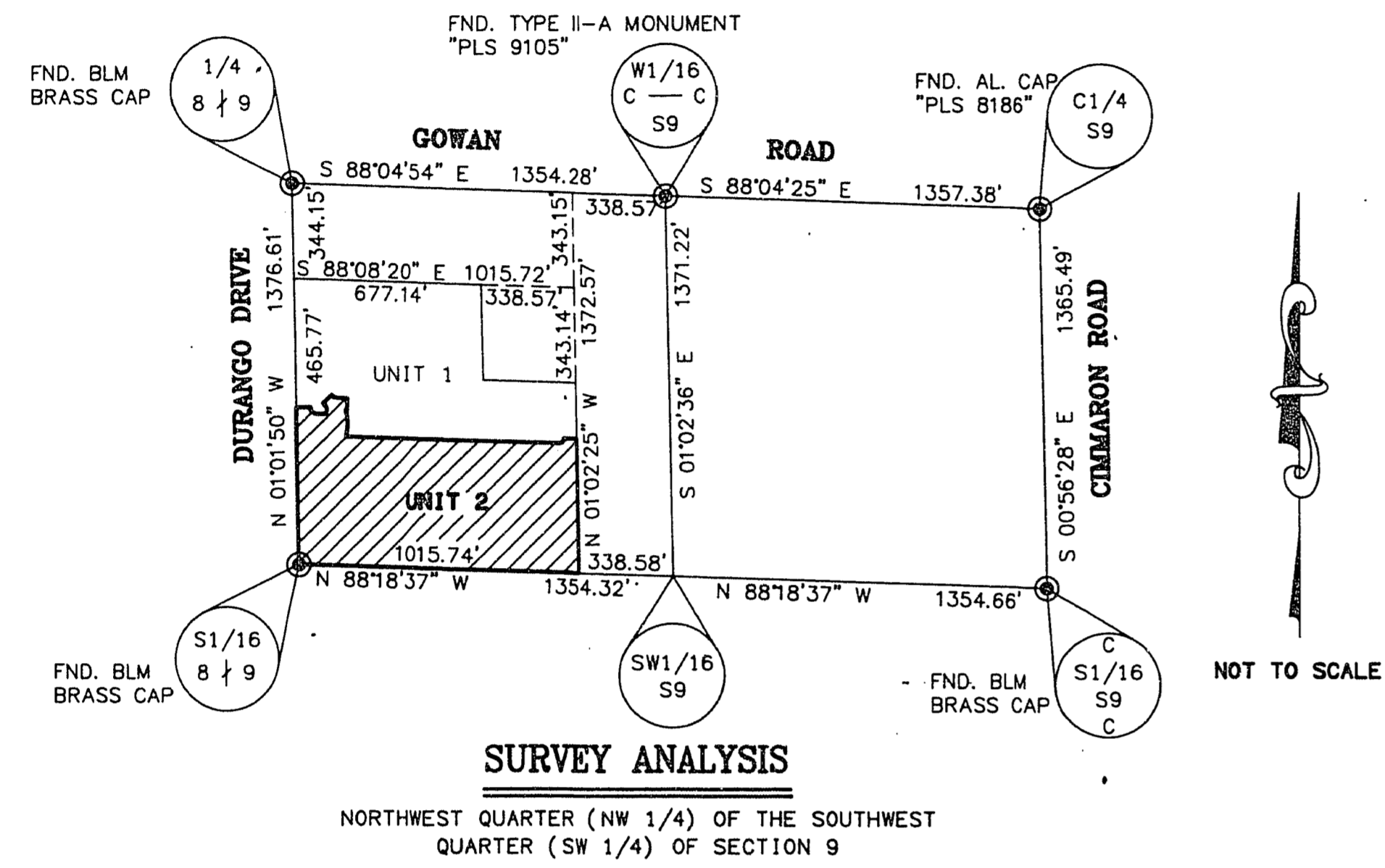


MIRA VISTA - UNIT 2

(A COMMON INTEREST OWNERSHIP COMMUNITY)
 A PORTION OF THE NORTHWEST QUARTER (NW 1/4) OF THE SOUTHWEST QUARTER (SW 1/4)
 OF SECTION 9, TOWNSHIP 20 SOUTH, RANGE 60 EAST, M.D.M., CITY OF LAS VEGAS, CLARK COUNTY, NEVADA



CURVE TABLE

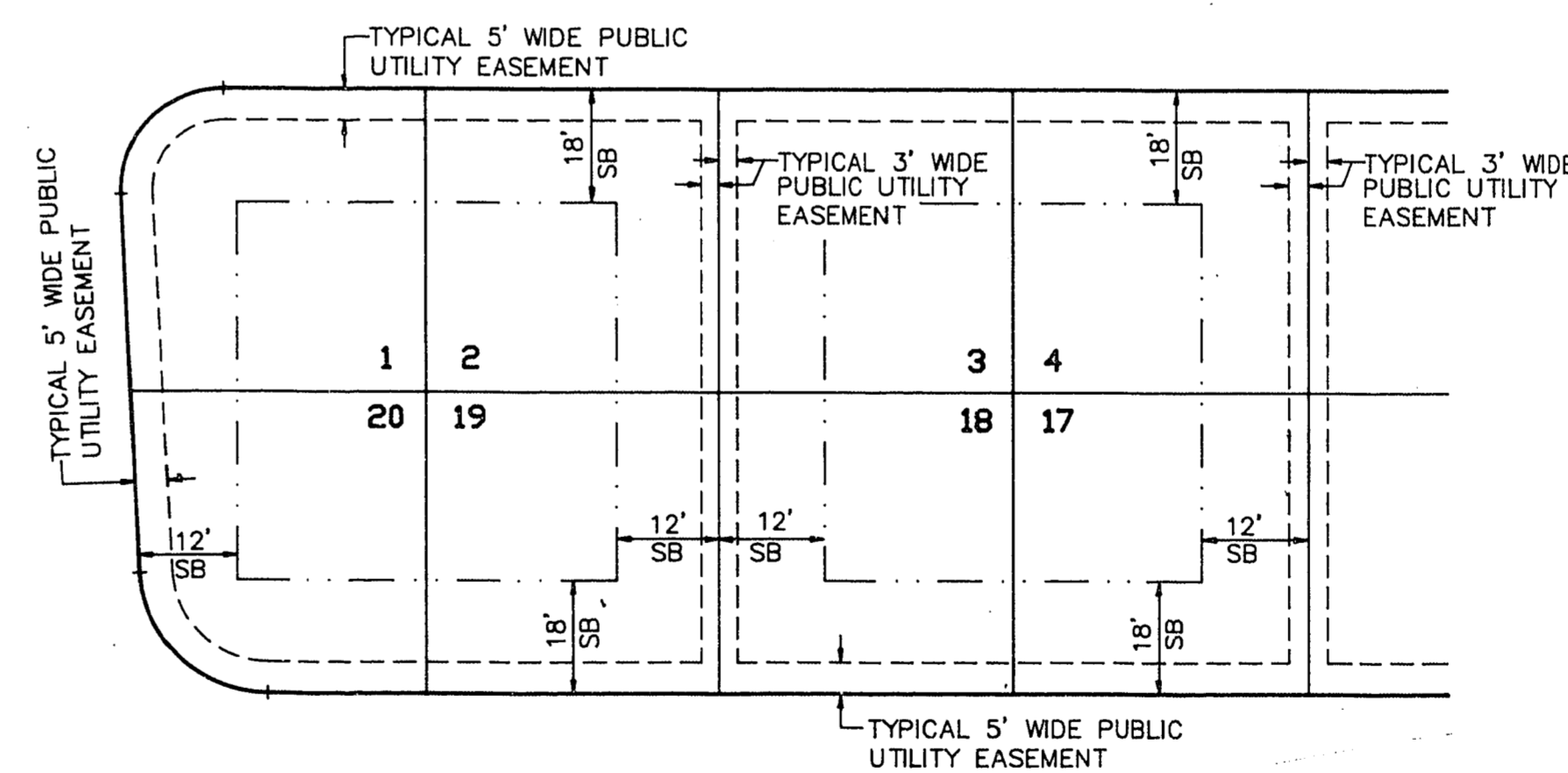
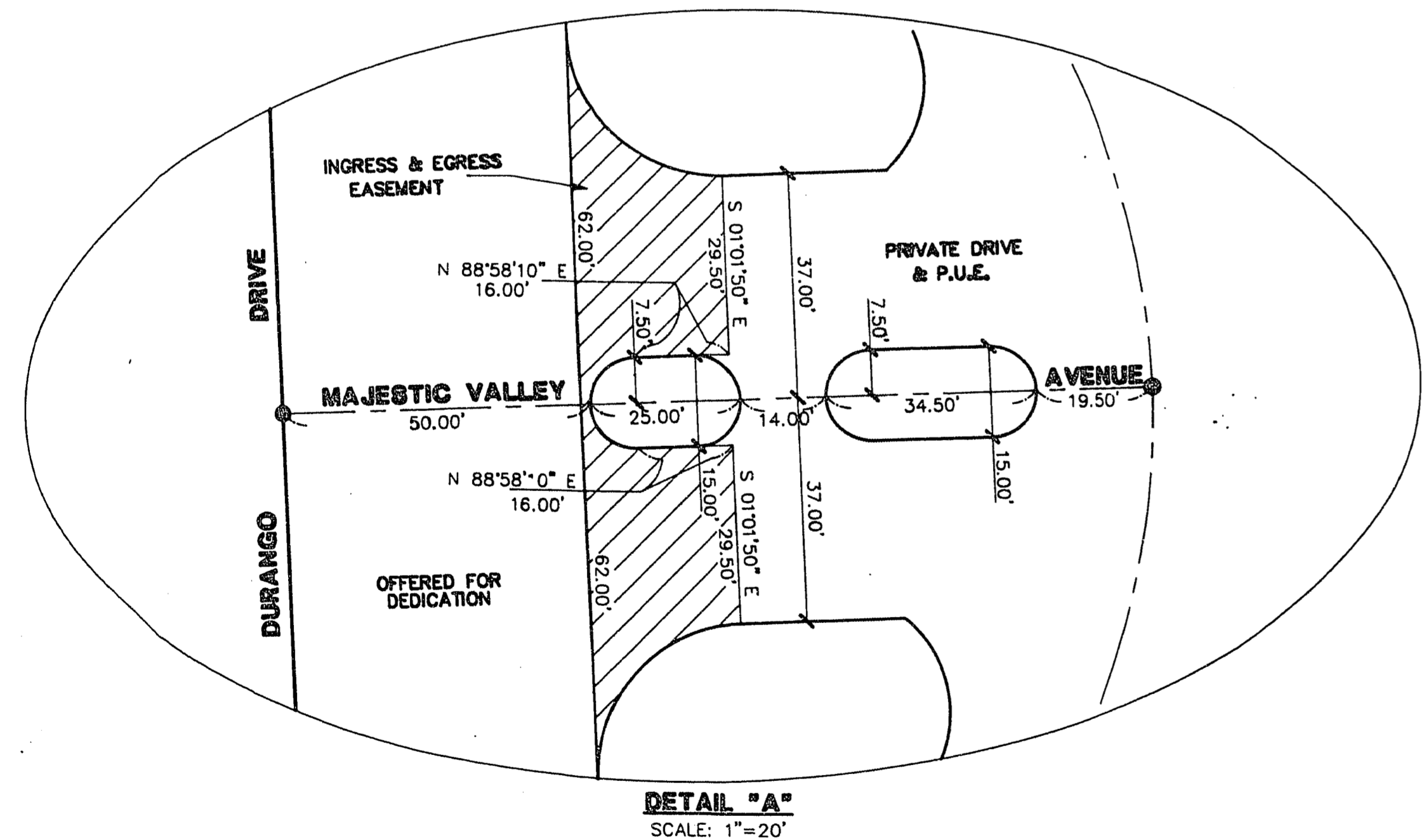
CURVE	RADIUS	LENGTH	TANGENT	DELTA
C1	25.00'	39.27'	25.00'	90°00'00"
C2	20.00'	29.13'	17.83'	83°26'25"
C3	111.00'	15.95'	7.99'	08°13'51"
C4	154.00'	5.65'	2.83'	02°06'08"
C5	20.00'	16.16'	8.55'	46°18'05"
C6	16.00'	5.67'	2.87'	20°18'30"
C7	169.00'	95.96'	49.31'	32°31'59"
C8	16.00'	3.90'	1.96'	13°59'00"
C9	16.00'	25.90'	16.78'	92°43'48"
C10	111.00'	15.95'	7.99'	08°13'51"
C11	16.00'	6.51'	3.30'	23°18'39"
C12	16.00'	17.86'	9.99'	63°58'09"
C13	50.00'	36.24'	18.96'	41°32'00"
C14	50.00'	1.35'	0.68'	01°32'51"
C15	16.00'	25.90'	16.78'	92°43'48"
C16	39.50'	63.93'	41.43'	92°43'48"
C17	59.00'	95.49'	61.88'	92°43'48"
C18	39.50'	60.17'	37.67'	87°16'47"
C19	59.00'	89.88'	56.26'	87°16'47"
C20	20.00'	29.13'	17.83'	83°26'25"
C21	130.50'	71.13'	36.47'	31°13'49"
C22	130.50'	80.82'	41.75'	35°29'04"
C23	130.50'	17.30'	8.66'	07°35'47"
C24	130.50'	196.25'	122.04'	86°09'41"
C25	16.00'	27.28'	18.31'	97°42'15"
C26	154.00'	58.41'	29.56'	21°43'59"
C27	16.00'	29.05'	20.49'	104°01'45"
C28	154.00'	12.25'	6.13'	04°33'28"
C29	16.00'	23.38'	14.34'	83°43'15"
C30	73.50'	55.26'	29.01'	43°04'51"
C31	130.50'	26.99'	13.54'	11°51'01"
C32	7.50'	23.56'	18.00'	180°00'00"
C33	20.00'	18.92'	10.23'	54°11'50"
C34	20.00'	30.46'	19.07'	87°16'12"
C35	20.00'	32.37'	20.97'	92°43'13"
C36	16.00'	24.37'	15.26'	87°16'47"
C37	25.00'	39.27'	25.00'	90°00'00"
C38	16.00'	23.38'	14.34'	83°43'15"
C39	93.00'	69.93'	36.71'	43°04'51"
C40	50.00'	36.24'	18.96'	41°32'00"

COURSE TABLE

LINE	DIRECTION	DISTANCE
L1	N 01°41'23" E	75.71'
L2	N 88°58'10" E	26.91'
L3	N 88°58'10" E	10.00'
L4	N 88°58'10" E	19.50'

RADIAL LINE TABLE

LINE	DIRECTION	PCC
R1	S 56°10'50" E	PCC
R2	S 49°29'50" E	
R3	N 25°00'02" E	
R4	N 59°48'00" W	
R5	N 53°29'07" E	
R6	N 54°07'11" E	PCC
R7	S 15°40'23" W	
R8	S 80°36'22" E	PRC
R9	N 77°39'38" E	PRC
R10	N 18°37'07" W	
R11	S 47°59'28" W	PRC
R12	S 42°26'24" E	
R13	N 72°15'39" E	PCC
R14	S 75°12'23" E	PCC
R15	S 47°58'58" E	PRC
R16	N 40°22'45" E	



ACT	DATE	BY	REVISION
1	1/2/95	VCL	1/E EASEMENT AND NEW R.O.W. DEDICATION