

960725

19-17-24 C1086

MOUNTAIN SPA - UNIT 1

A PLANNED UNIT DEVELOPMENT

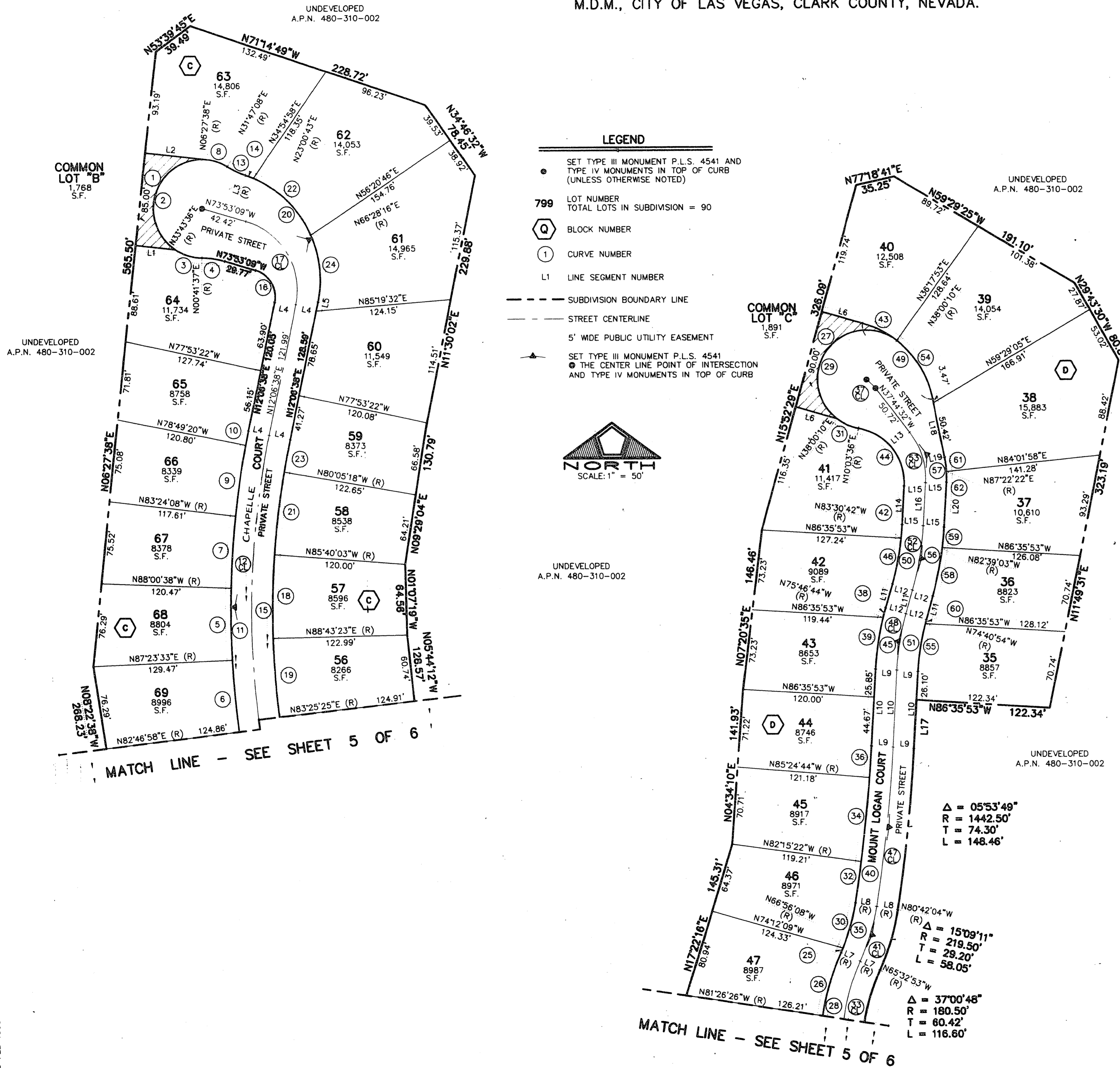
BEING A PORTION OF SECTION 10, TOWNSHIP 19 SOUTH, RANGE 60 EAST,
M.D.M., CITY OF LAS VEGAS, CLARK COUNTY, NEVADA.

NOTES:

- ALL REAR PROPERTY CORNERS ARE REBAR AND ALUMINUM CAP P.L.S. 4541 UNLESS WALL IS BUILT THEN NAIL AND BRASS TAG P.L.S. 4541 SET IN WALL DENOTES SIDE PROPERTY LINE. SET SAWCUT IN THE TOP OF CURB ON THE SIDE PROPERTY LINES EXTENDED.
- COMMUNITY SEWERS ARE TO BE PROVIDED BY THE CITY OF LAS VEGAS.
- ALL INTERNAL STREETS ARE PRIVATE STREETS WITH C.L.V. PUBLIC SEWER EASEMENTS.

LEGEND

- SET TYPE III MONUMENT P.L.S. 4541 AND TYPE IV MONUMENTS IN TOP OF CURB (UNLESS OTHERWISE NOTED)
- 799 LOT NUMBER
TOTAL LOTS IN SUBDIVISION = 90
- Q BLOCK NUMBER
- 1 CURVE NUMBER
- L1 LINE SEGMENT NUMBER
- - - - - SUBDIVISION BOUNDARY LINE
- - - - - STREET CENTERLINE
- - - - - 5' WIDE PUBLIC UTILITY EASEMENT
- ▲ SET TYPE III MONUMENT P.L.S. 4541
● THE CENTER LINE POINT OF INTERSECTION AND TYPE IV MONUMENTS IN TOP OF CURB



LINE	BEARING	DISTANCE
L1	N83°32'22"W	36.79'
L2	N83°32'22"W	57.40'
L3	N18°25'36"E (R)	---
L4	N77°53'22"W	19.50'
L5	N12°06'38"E	8.67'
L6	N74°07'31"W	38.98'
L7	N85°32'53"W	19.50'
L8	N80°42'04"W	19.50'
L9	N86°35'53"W	19.50'
L10	N03°24'07"E	70.52'
L11	N16°18'28"E	22.54'
L12	N73°41'32"W	19.50'
L13	N52°15'28"E (R)	---
L14	N03°36'44"E	35.22'
L15	N86°23'16"W	19.50'
L16	N03°36'44"E	39.21'
L17	N03°24'07"E	44.42'
L18	N11°54'43"W	53.89'
L19	N78°44'17"E (R)	---
L20	N03°36'44"E	41.04'

CURVE	DELTA	RADIUS	LENGTH	TANGENT
1	152°44'02"	45.00'	119.96'	185.54'
2	211°05'31"	45.00'	165.79'	---
3	33°01'59"	45.00'	25.94'	13.34'
4	15°25'14"	80.00'	21.53'	10.83'
5	04°35'49"	819.50'	65.75'	32.89'
6	04°36'36"	819.50'	65.94'	32.99'
7	04°36'30"	819.50'	65.91'	32.97'
8	25°19'30"	45.00'	19.89'	10.11'
9	04°34'48"	819.50'	65.51'	32.77'
10	00°55'58"	819.50'	13.34'	6.67'
11	22°37'12"	819.50'	323.53'	163.90'
12	22°37'12"	800.00'	315.83'	160.00'
13	13°21'31"	80.00'	18.65'	9.37'
14	04°35'06"	100.00'	8.00'	4.00'
15	22°37'12"	780.50'	308.14'	156.10'
16	85°59'47"	25.00'	37.52'	23.31'
17	85°59'47"	65.00'	97.56'	60.61'
18	05°36'35"	780.50'	76.42'	38.24'
19	05°17'58"	780.50'	72.19'	36.12'
20	83°41'02"	100.00'	146.06'	89.54'
21	05°34'44"	780.50'	76.00'	38.03'
22	43°27'34"	100.00'	75.85'	39.85'
23	02°11'56"	780.50'	29.95'	14.98'
24	35°38'22"	100.00'	62.20'	32.14'
25	01°23'15"	180.50'	4.37'	2.19'
26	15°53'33"	219.50'	60.89'	30.64'
27	18°00'00"	45.00'	141.37'	---
28	37°00'47"	219.50'	141.80'	73.47'
29	20°56'33"	45.00'	163.32'	---
30	13°45'56"	180.50'	43.37'	21.79'
31	27°56'33"	45.00'	21.95'	11.20'
32	01°33'18"	1403.50'	38.09'	19.05'
33	37°00'47"	200.00'	129.20'	66.94'
34	03°09'22"	1403.50'	77.31'	38.67'
35	15°09'11"	180.50'	47.74'	24.01'
36	01°11'08"	1403.50'	29.04'	14.52'
37	14°15'18"	45.00'	11.20'	5.63'
38	02°05'12"	251.50'	9.16'	4.58'
39	10°49'08"	251.50'	47.49'	23.82'
40	05°53'49"	1403.50'	144.45'	72.29'
41	15°09'11"	200.00'	52.89'	26.60'
42	02°52'33"	248.50'	12.47'	6.24'
43	22°07'41"	90.00'	34.76'	17.60'
44	83°33'08"	50.00'	72.91'	44.57'
45	12°54'21"	251.50'	56.65'	28.45'
46	09°49'10"	248.50'	42.59'	21.35'
47	05°53'49"	1423.00'	146.46'	73.29'
48	12°54'21"	232.00'	52.26'	26.24'
49	40°44'07"	90.00'	63.99'	33.41'
50	12°41'43"	248.50'	55.06'	27.64'
51	12°54'21"	212.50'	47.87'	24.03'
52	12°41'43"	268.00'	59.38'	29.81'
53	41°21'13"	68.00'	49.08'	29.68'
54	40°44'07"	90.00'	63.99'	33.41'
55	11°54'59"	212.50'	44.20'	22.18'
56	12°41'43"	287.50'	63.70'	31.98'
57	14°52'28"	87.50'	22.72'	11.42'
58	08°57'31"	287.50'	44.95'	22.52'
59	03°44'12"	287.50'	18.75'	9.38'
60	00°59'22"	212.50'	3.67'	1.83'
61	08°38'06"	87.50'	13.19'	6.61'
62	06°14'22"	87.50'	9.53'	4.77'

29 FEB 1996

JOB# 0158.0001

SHEET 6 OF 6

Book 75 Page 24