

960726

18-17-89

01684

NORTHSHORE PHASE I LOT D - UNIT 2

A PORTION OF LOT D OF THE SECOND AMENDED PLAT OF
A PORTION OF NORTHSHORE - PHASE I: BOOK 71, PAGE 46,
LOCATED IN THE SOUTH HALF (S 1/2) OF SECTION 9, TOWNSHIP 20 SOUTH, RANGE 60 EAST, M.D.M.,
CITY OF LAS VEGAS, CLARK COUNTY, NEVADA

LEGEND

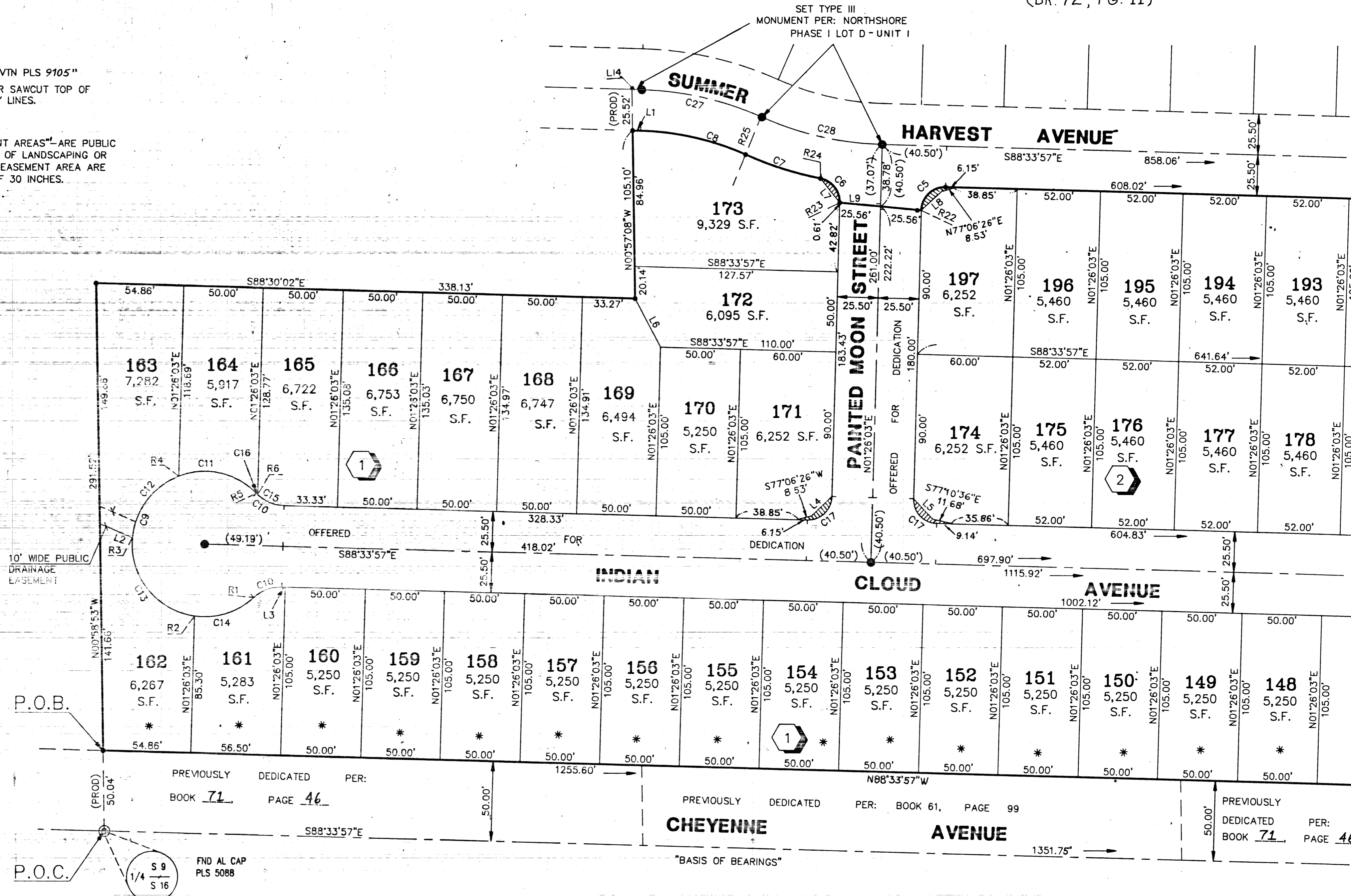
- P.O.B. POINT OF BEGINNING
- P.O.C. POINT OF COMMENCEMENT
- 15 LOT NUMBER / TOTAL RESIDENTIAL = 64
- ① BLOCK NUMBER
- R1 RADIAL LINE NUMBER
- L3 COURSE NUMBER
- C2 CURVE NUMBER
- ⊙ FOUND MONUMENT AS DESCRIBED
- SET TYPE III MONUMENT - AL. CAP "VTN PLS 9105"
- SET NAIL & BRASS TAG "PLS 9105" OR SAWCUT TOP OF CURB ON PROLONGATION OF PROPERTY LINES.
- S.F. SQUARE FEET

"SIGHT VISIBILITY RESTRICTION EASEMENT AREAS" ARE PUBLIC EASEMENTS AND AS SUCH THE HEIGHT OF LANDSCAPING OR PHYSICAL IMPROVEMENTS WITHIN THE EASEMENT AREA ARE RESTRICTED TO A MAXIMUM HEIGHT OF 30 INCHES.

(PROD) PRODUCED LINE

SCALE: 1" = 40'

LOT F
NORTHSHORE PHASE I
AMENDED PLAT BOOK 67, PAGE 89



SEE SHEET 4 FOR CONTINUATION OF THIS AREA

- 1.) ALL REAR LOT CORNERS SHALL BE SET WITH A NAIL AND BRASS TAG P.L.S. 9105 ON BLOCK WALL AND ALL FRONT OR SIDE LOT CORNERS ADJOINING RIGHT-OF-WAY SHALL BE MARKED BY THE SAWCUTTING OF THE BACK OF CURBS ON THE PROLONGATION OF THE PROPERTY LINES.
- 2.) * DIRECT VEHICULAR ACCESS TO CHEYENNE AVE. FROM ABUTTING LOTS IS PROHIBITED.

ACT	DATE	BY	REVISION

W.O. 4663-A1-2
SHEET 3 OF 5

4318-D2
Book 75 Page 27