

18-17-104

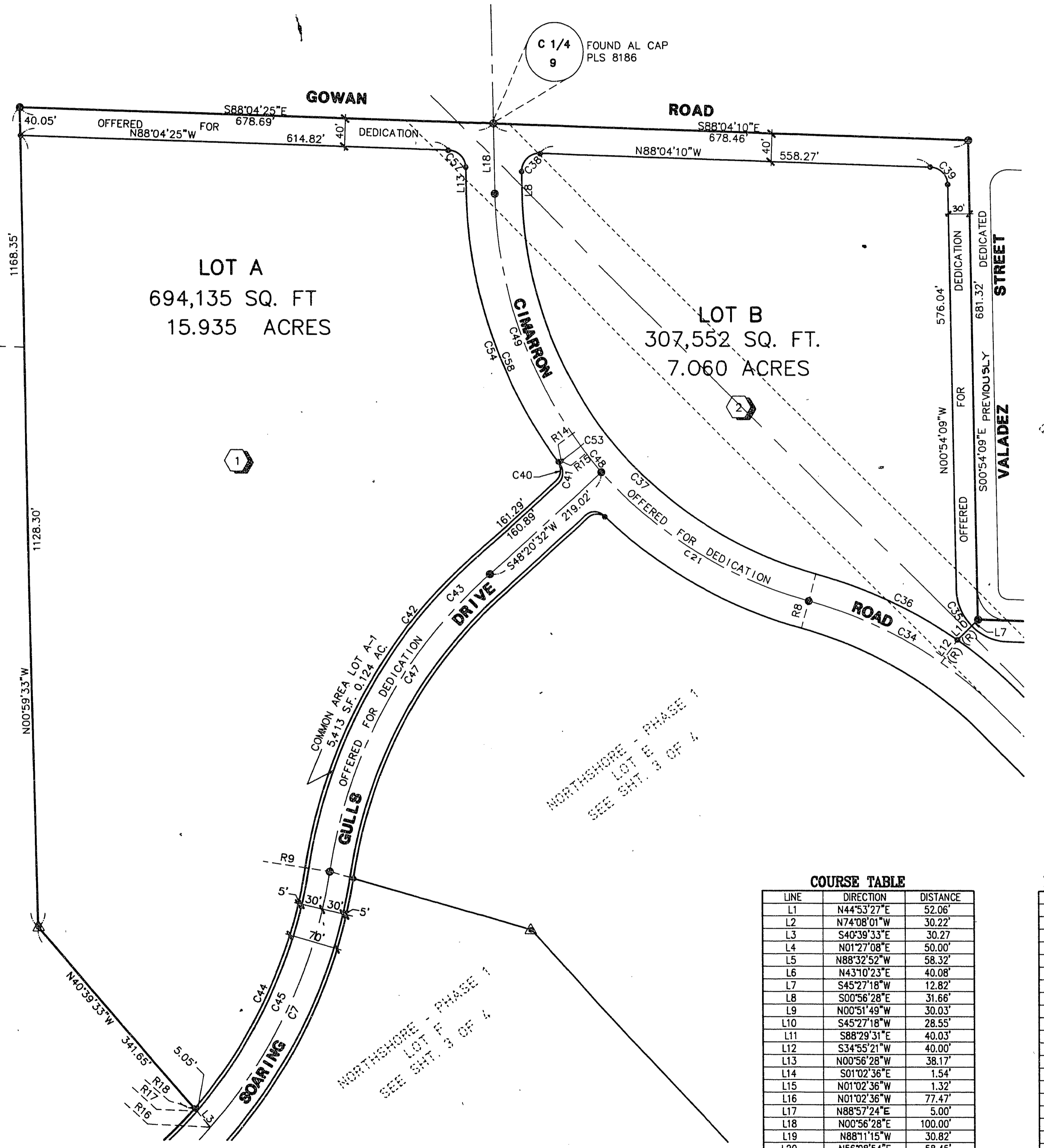
NORTHSHORE - PHASE I

A PORTION OF THE SOUTH HALF (S 1/2) OF SECTION 9, T.20 S., R.60 E., M.D.M., CITY OF LAS VEGAS, CLARK COUNTY, NEVADA.

LEGEND

- LOT E LOT NUMBER / 7 TOTAL LOTS
- P.O.B. POINT OF BEGINNING
- BLOCK NUMBER
- L4 COURSE NUMBER
- C5 CURVE NUMBER
- R7 RADIAL LINE NUMBER
- FOUND MONUMENT AS INDICATED
- SET TYPE III MONUMENT - AL. CAP., VTN PLS 8421"
- (R) RADIAL LINE
- ▲ SET REBAR & AL. CAP "VTN PLS 8421"
- SET NAIL & BRASS TAG "VTN PLS 8421" OR SAWCUT BACK OF CURB ON PROPERTY LINE PROLONGATIONS SEE MONUMENTATION NOTE THIS SHEET.

1" = 100'



CURVE TABLE

CURVE	RADIUS	LENGTH	TANGENT	DELTA
C1	610.00'	471.06'	247.98'	44°14'44"
C2	715.00'	960.64'	568.53'	76°58'48"
C3	715.00'	836.98'	473.88'	67°04'13"
C4	610.00'	30.94'	15.47'	02°54'23"
C6	715.00'	265.91'	134.51'	21°18'31"
C7	715.00'	410.94'	211.32'	32°55'49"
C8	570.00'	418.95'	219.44'	42°06'43"
C9	650.00'	67.38'	33.72'	05°56'21"
C10	745.00'	591.31'	312.22'	45°28'32"
C11	750.00'	594.68'	313.96'	45°25'49"
C12	750.00'	278.97'	141.12'	21°18'42"
C13	745.00'	277.10'	140.17'	21°18'41"
C14	680.00'	913.62'	540.70'	76°58'48"
C15	685.00'	920.33'	544.68'	76°58'48"
C16	745.00'	1000.95'	592.39'	76°58'48"
C17	750.00'	1007.67'	596.36'	76°58'48"
C18	25.00'	40.36'	26.11'	92°29'44"
C19	685.00'	412.12'	212.52'	34°28'20"
C20	54.00'	86.99'	56.21'	92°17'52"
C21	610.00'	350.53'	180.25'	32°55'29"
C22	610.00'	313.79'	160.45'	29°28'23"
C23	570.00'	293.21'	149.93'	29°28'23"
C24	650.00'	324.97'	165.95'	28°38'41"
C25	715.00'	492.62'	256.54'	39°28'33"
C26	685.00'	471.95'	245.78'	39°28'33"
C27	680.00'	468.51'	243.98'	39°28'33"
C28	20.00'	29.77'	18.42'	85°17'29"
C29	20.00'	29.92'	18.56'	85°17'29"
C30	650.00'	113.09'	56.69'	09°58'06"
C31	75.00'	57.13'	30.03'	43°38'33"
C32	650.00'	320.10'	163.36'	28°12'57"
C33	610.00'	106.13'	53.20'	09°58'06"
C34	610.00'	207.66'	104.84'	19°30'18"
C35	75.00'	57.13'	30.03'	43°38'33"
C36	650.00'	221.28'	111.72'	19°30'18"
C37	570.00'	732.61'	426.73'	73°38'28"
C38	25.00'	40.52'	26.29'	92°52'18"
C39	25.00'	38.03'	23.79'	87°10'01"
C40	20.00'	29.77'	18.42'	85°17'29"
C41	20.00'	29.92'	18.56'	85°17'29"
C42	750.00'	516.74'	269.10'	39°28'33"
C43	745.00'	513.29'	267.31'	39°28'33"
C44	680.00'	386.19'	198.46'	32°32'22"
C45	685.00'	389.72'	200.29'	32°35'52"
C46	680.00'	409.62'	211.35'	34°31'51"
C47	715.00'	492.62'	256.54'	39°28'33"
C48	610.00'	784.02'	456.68'	73°38'28"
C49	610.00'	433.49'	226.35'	40°42'59"
C50	570.00'	21.23'	10.61'	02°08'01"
C51	750.00'	4.30'	2.15'	00°19'41"
C52	745.00'	3.68'	1.84'	00°17'00"
C53	650.00'	4.87'	2.43'	00°25'44"
C54	650.00'	408.50'	211.25'	36°00'29"
C55	715.00'	160.12'	80.40'	12°49'53"
C56	650.00'	330.06'	168.67'	29°03'38"
C57	25.00'	38.02'	23.78'	87°07'57"
C58	650.00'	413.36'	213.94'	34°24'13"
C59	610.00'	20.02'	10.01'	01°52'50"
C60	650.00'	88.54'	41.83'	07°21'49"
C61	610.00'	320.26'	160.91'	30°04'58"
C62	610.00'	99.83'	50.03'	09°22'37"
C63	378.43'	56.52'	28.31'	08°33'29"
C64	20.00'	30.06'	18.68'	86°06'22"
C65	20.00'	30.06'	18.68'	86°06'22"
C66	352.93'	61.95'	31.05'	10°33'25"
C67	403.83'	51.18'	25.62'	07°15'35"
C68	650.00'	262.68'	133.16'	23°09'18"

COURSE TABLE

LINE	DIRECTION	DISTANCE
L1	N44°53'27"E	52.06'
L2	N74°08'01"W	30.22'
L3	S40°38'33"E	30.27'
L4	N01°27'08"E	50.00'
L5	N88°32'52"W	58.32'
L6	N43°10'23"E	40.08'
L7	S45°27'18"W	12.82'
L8	S00°56'28"E	31.66'
L9	N00°51'49"W	30.03'
L10	S45°27'18"W	28.55'
L11	S88°29'31"E	40.03'
L12	S34°55'21"W	40.00'
L13	N00°56'28"W	38.17'
L14	S01°02'36"E	1.54'
L15	N01°02'36"W	1.32'
L16	N01°02'36"W	77.47'
L17	N88°57'24"E	5.00'
L18	N00°56'28"E	100.00'
L19	N88°11'15"W	30.82'
L20	N56°08'54"E	58.45'
L21	S45°06'33"E	26.99'
L22	N45°06'33"W	27.23'

RADIAL LINE TABLE

LINE	DIRECTION	DISTANCE
R1	S14°03'49"E	
R2	S35°22'31"E	
R3	S80°48'20"E	
R4	N47°01'28"E	
R6	N80°51'02"W	
R7	S80°48'20"E	
R8	S15°25'03"W	
R9	S81°08'01"E	
R10	S35°22'28"E	
R11	N43°38'01"E	
R12	N44°03'45"E	
R13	N83°11'50"E	
R14	N59°09'05"E	
R15	N52°37'19"E	
R16	S48°12'12"E	
R17	S48°32'09"E	
R18	S48°35'39"E	
R19	S52°15'16"W	
R20	S26°35'31"E	
R21	S23°47'41"E	
R22	N86°13'48"E	
R23	S25°17'37"E	
R24	S60°02'32"W	

MONUMENTATION NOTE
 PURSUANT TO NRS 278.371, ALL REAR LOT CORNERS SHALL BE SET WITH A NAIL AND TAG "VTN PLS 8421" ON BLOCK WALLS AND ALL FRONT OR SIDE CORNERS ADJOINING RIGHT-OF-WAY SHALL BE MARKED BY THE SAWCUTTING OF THE BACK OF CURBS ON THE PROLONGATIONS OF THE PROPERTY LINES.

ACT	DATE	BY	REVISION

W.O. 4438
 SHEET 5 OF 5
 TJ/BC

Book 61 Page 99 4318-1