

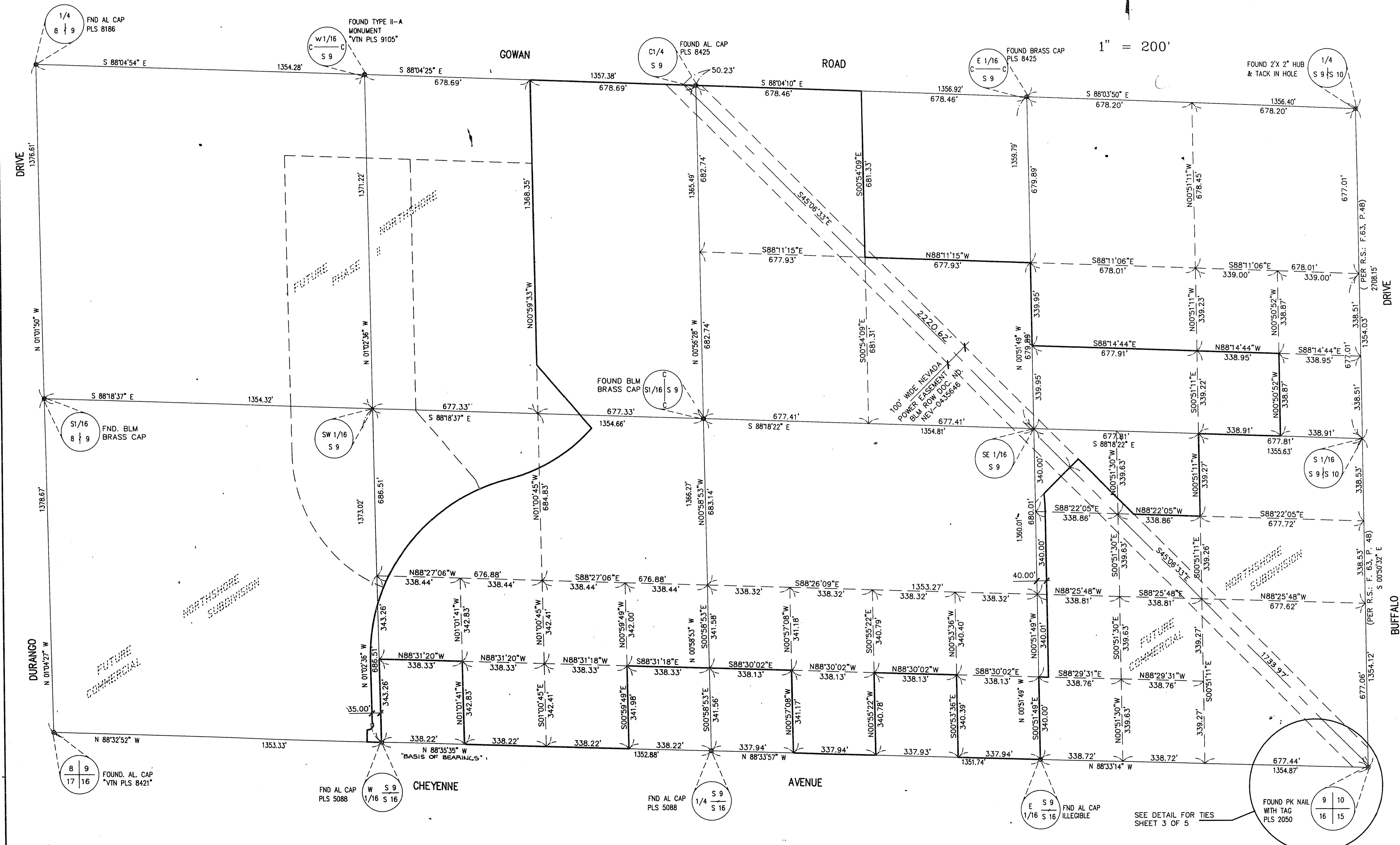
18-17-101

NORTHSHORE - PHASE I

A PORTION OF THE SOUTH HALF (S 1/2) OF SECTION 9, TOWNSHIP 20 SOUTH, RANGE 60 EAST, M.D.M., CITY OF LAS VEGAS, CLARK COUNTY, NEVADA.

- LEGEND**
- BOUNDARY OF THIS SUBDIVISION
 - 1/16 SECTION LINE
 - 1/256 SECTION LINE
 - - - - PROPOSED NORTHSHORE PHASE II
 - FOUND MONUMENT AS INDICATED

1" = 200'



ACT	DATE	BY	REVISION

SURVEY ANALYSIS
 SCALE: 1" = 200'
 SOUTH HALF (S 1/2) OF SECTION 9

W.O. 4438-1
 SHEET 2 OF 5
 TJ