

1417-103

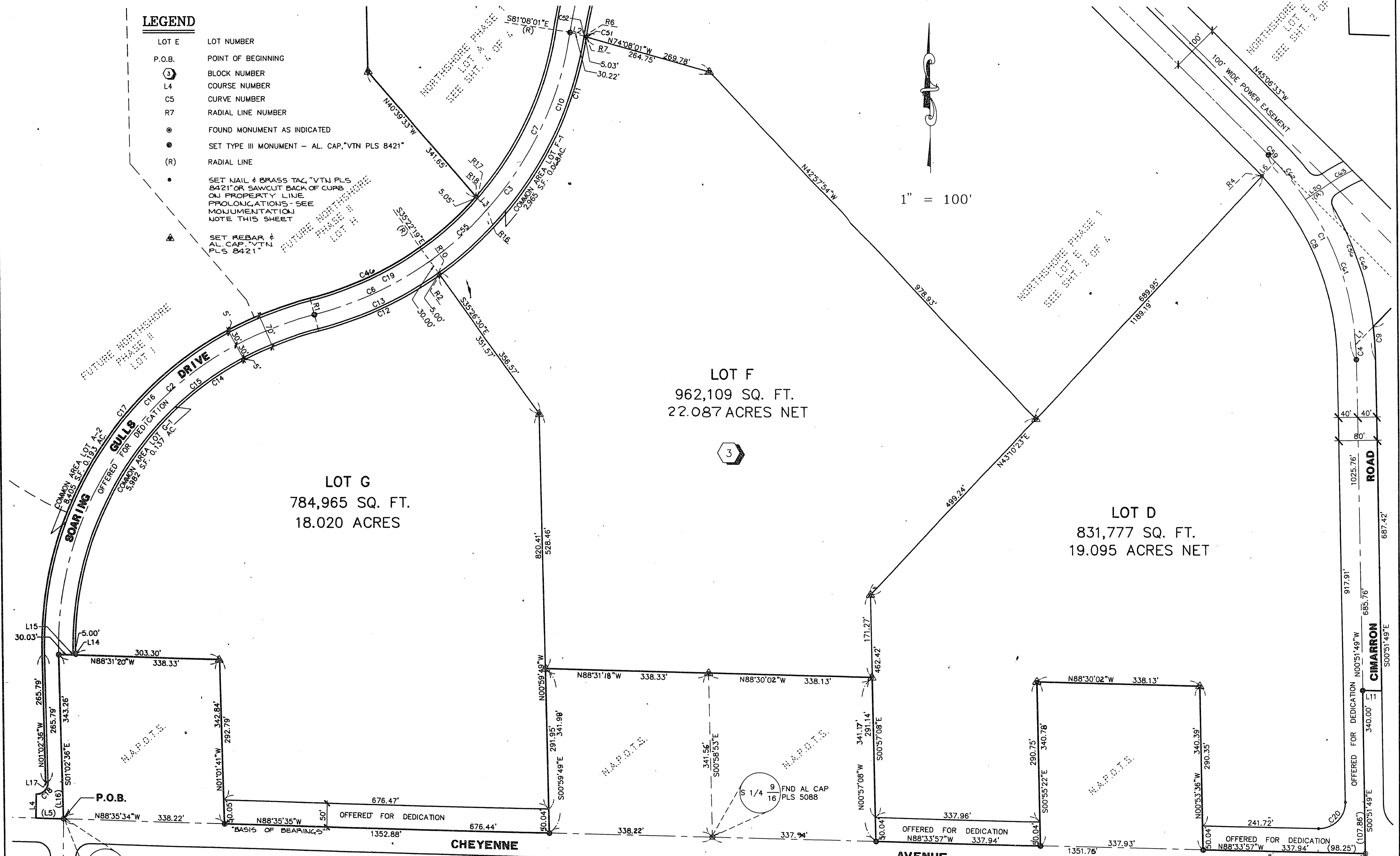
NORTHSHORE - PHASE I

A PORTION OF THE SOUTH HALF (S 1/2) OF SECTION 9, T.20 S., R.60 E.M.D.M., CITY OF LAS VEGAS, CLARK COUNTY, NEVADA.

LEGEND

- LOT E LOT NUMBER
- P.O.B. POINT OF BEGINNING
- Ⓝ BLOCK NUMBER
- L4 COURSE NUMBER
- C5 CURVE NUMBER
- R7 RADIAL LINE NUMBER
- FOUND MONUMENT AS INDICATED
- SET TYPE III MONUMENT - AL. CAP, VTN PLS 8421"
- (R) RADIAL LINE
- SET NAIL & BRASS TAG "VTN PLS 8421" OR SAWCUT BACK OF CURB ON PROPERTY LINE PROLONGATIONS - SEE MONUMENTATION NOTE THIS SHEET
- ▲ SET REBAR & AL. CAP, VTN PLS 8421"

1" = 100'



MONUMENTATION NOTE

PURSUANT TO NRS 278.971, ALL REAR LOT CORNERS SHALL BE SET WITH A NAIL & TAG, "VTN PLS 8421" ON BLOCK WALLS AND ALL FRONT OR SIDE LOT CORNERS ADJOINING RIGHT-OF-WAY SHALL BE MARKED BY THE SAWCUTTING OF THE BACKS OF CURBS ON THE PROLONGATION ON THE PROPERTY LINES.

ACT	DATE	BY	REVISION