

16-17-141

# MARIPOSA CONDOMINIUMS

A PORTION OF THE SOUTHEAST QUARTER (SE 1/4) OF THE NORTHEAST QUARTER (NE 1/4) OF SECTION 10, TOWNSHIP 20 SOUTH, RANGE 60 EAST, M. D. B. & M. CITY OF LAS VEGAS, CLARK COUNTY, NEVADA

FOUND RE-BAR & ALUM. CAP R.L.S. 2050

NE 1/16 S-10

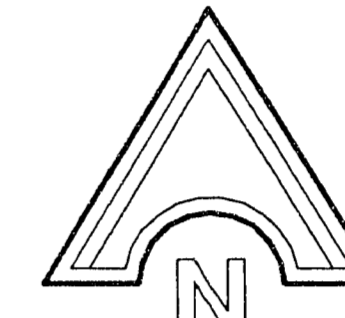
FOUND RE-BAR & CAP R.L.S. 2050

N 1/16 10 11

ROSEWOOD ESTATES UNIT NO. 3  
BOOK 28 OF PLATS, PG. 93  
BOOK 33 OF PLATS, PG. 69

ROSEWOOD ESTATES UNIT NO. 2  
BOOK 28 OF PLATS, PG. 85

FOUND RE-BAR & CAP P.L.S. #



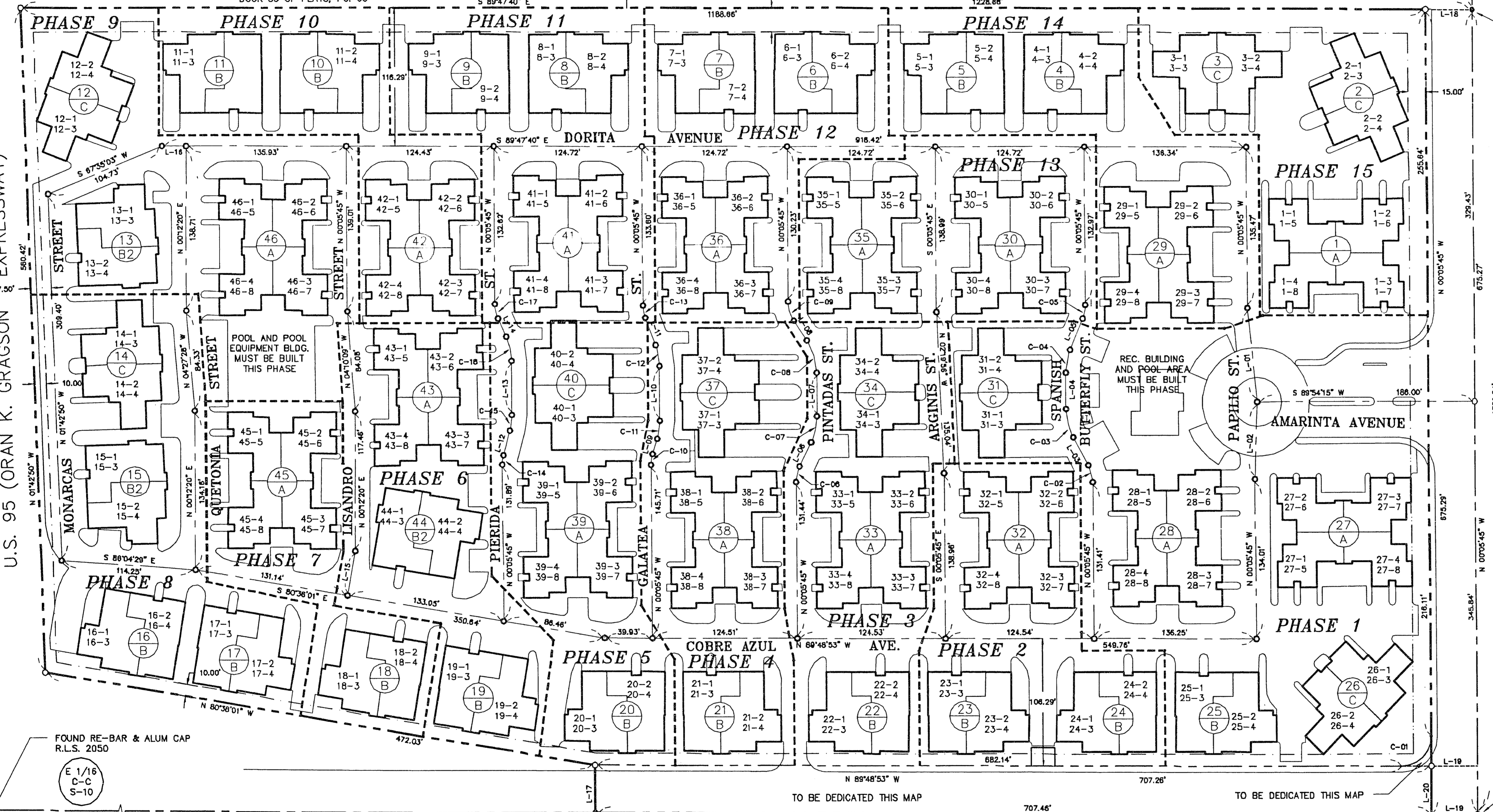
SCALE 1" = 50'

RAINBOW BOULEVARD

REFERENCE MAPS:  
BOOK 49 OF PLATS, PG. 17  
BOOK 29 OF PLATS, PG. 93

FOUND "PK" NAIL W/ STRADDLES

1/4 10 11



FOUND RE-BAR & ALUM CAP R.L.S. 2050

E 1/16 C-C S-10

TO BE DEDICATED THIS MAP

TO BE DEDICATED THIS MAP

POINT OF BEGINNING

LINE	DIRECTION	DISTANCE	LINE	DIRECTION	DISTANCE
L-01	N 05°28'48" W	79.04'	L-11	S 20°30'28" E	24.42'
L-02	S 02°02'46" W	64.66'	L-12	N 15°04'33" E	21.46'
L-03	S 28°19'21" E	26.63'	L-13	N 00°00'42" W	45.29'
L-04	N 00°00'42" W	30.31'	L-14	S 24°04'02" E	16.65'
L-05	N 22°28'18" E	28.35'	L-15	N 10°24'23" E	38.19'
L-06	N 25°48'58" E	22.34'	L-16	N 89°47'40" W	20.84'
L-07	S 00°00'42" E	35.41'	L-17	N 00°11'07" E	40.00'
L-08	S 32°47'29" E	19.70'	L-18	N 89°43'40" W	40.00'
L-09	N 17°29'07" E	13.46'	L-19	S 89°48'53" E	40.00'
L-10	N 00°00'42" W	45.88'	L-20	N 00°05'45" W	40.00'

NOTE: ALL ON-SITE SEWERS ARE PRIVATELY OWNED AND MAINTAINED.  
ALL INTERIOR STREETS ARE "PRIVATE ACCESS DRIVES".  
ALL COMMON AREAS ARE SHOWN ON SHEETS 3 THRU 6.

CURVE	RADIUS	LENGTH	TANGENT	DELTA
C-01	25.00'	39.39'	25.12'	90°16'52"
C-02	30.00'	14.78'	7.54'	28°13'36"
C-03	50.00'	24.71'	12.61'	28°18'39"
C-04	50.00'	19.59'	9.92'	22°27'00"
C-05	30.00'	11.80'	5.98'	22°32'03"
C-06	30.00'	13.57'	6.80'	25°54'41"
C-07	50.00'	22.54'	11.46'	25°49'38"
C-08	50.00'	28.61'	14.71'	32°46'47"
C-09	30.00'	17.12'	8.80'	32°41'44"
C-10	30.00'	9.20'	4.64'	17°34'52"
C-11	50.00'	15.27'	7.69'	17°29'45"
C-12	50.00'	17.89'	9.04'	20°29'46"
C-13	30.00'	10.69'	5.40'	20°24'43"
C-14	30.00'	7.94'	4.00'	15°10'18"
C-15	50.00'	13.17'	6.62'	15°05'15"
C-16	50.00'	20.99'	10.65'	24°03'20"
C-17	30.00'	12.55'	6.37'	23°58'17"

### LEGEND

- POINT FOUND AS NOTED
- POINT SET (RE-BAR & CAP P.L.S. 7310)
- ⑩ BUILDING NUMBER (TOTAL 37)
- △ BUILDING TYPE
- △ BUILDING ENVELOPE (SHEETS 3 - 6)
- PROPERTY LINE
- PUBLIC STREET CENTERLINE
- PRIVATE ACCESS DRIVE CENTERLINE
- SET-BACK LINE
- PHASE LINE
- BACK OF CURB
- BUILDING LINE

SHEET 2 OF 9

*Handwritten note: Phase 6 Page 7*