

940216

01555

15-17-111

FINAL MAP OF  
**MAR-A-LAGO 2**  
 A CONDOMINIUM COMMON INTEREST COMMUNITY

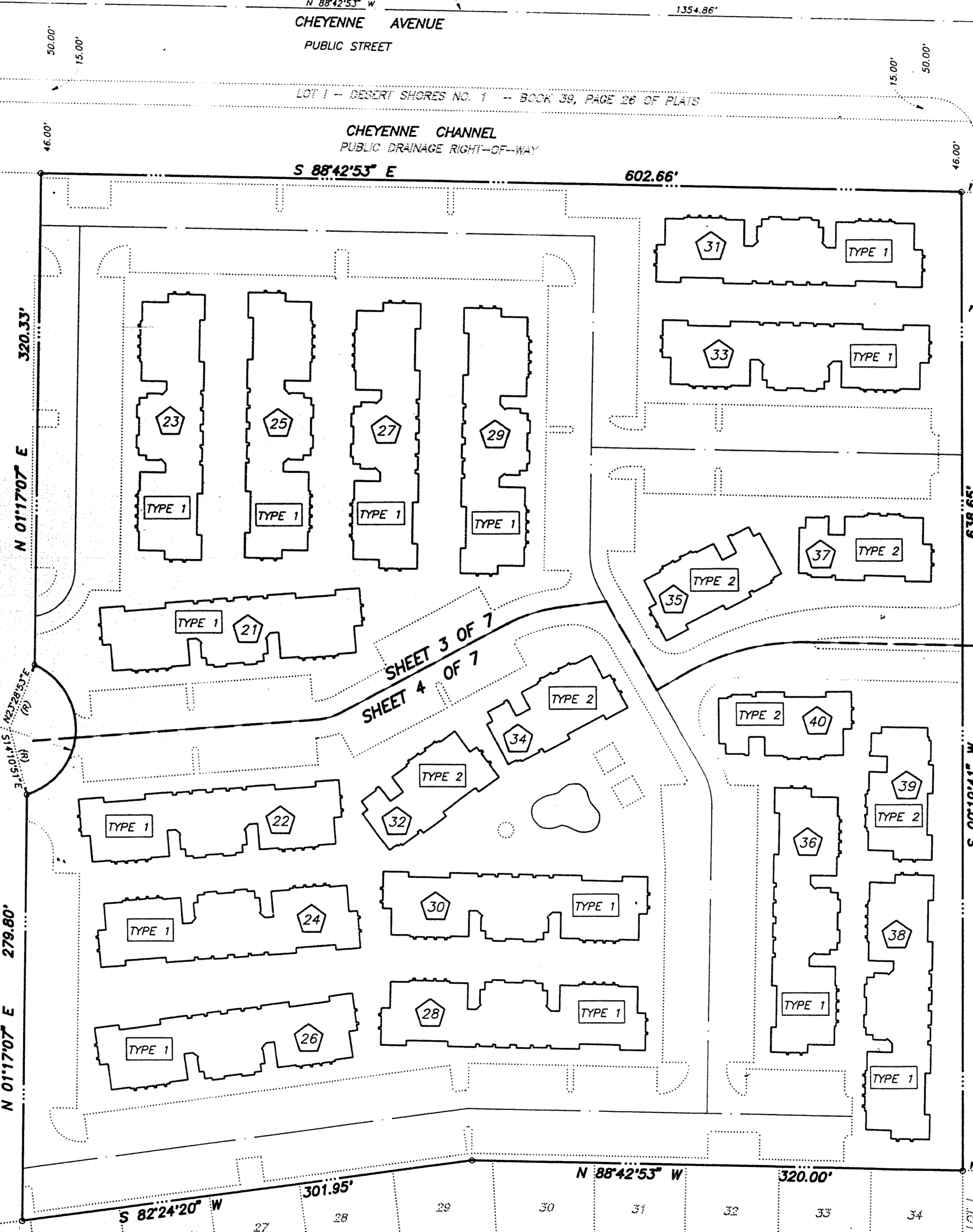
BEING A SUBDIVISION OF ALL OF PARCEL 2 AS SHOWN BY AMENDED PARCEL MAP OF FILE IN FILE 59, PAGE 6 OF PARCEL MAPS  
 IN THE CLARK COUNTY RECORDER'S OFFICE, CLARK COUNTY, NEVADA, LYING WITHIN THE NORTHEAST QUARTER (NE 1/4)  
 OF SECTION 16, TOWNSHIP 20 SOUTH, RANGE 60 EAST, M.D.M., CITY OF LAS VEGAS, CLARK COUNTY, NEVADA

W 1/16  $\frac{9}{16}$   
 FND. PK NAIL & 1-1/2"  
 BRASS TAG - P.L.S. 2050

BASIS OF BEARINGS  
 BOOK 39, PAGE 26 OF PLATS  
 N 88°42'53" W

SECTION 9 | 10  
 CORNER 16 | 15  
 FND. PK NAIL & 1-1/2"  
 BRASS TAG - P.L.S. 2050

SOFT BREEZE DRIVE  
 PUBLIC STREET

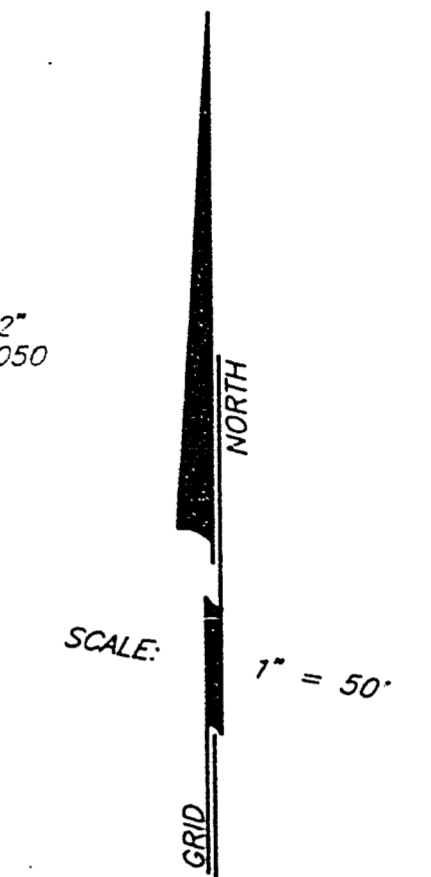


$\Delta = 142'20.16"$   
 $R = 45.00"$   
 $L = 111.79"$   
 $T = 131.95"$

MAR-A-LAGO 1  
 BOOK 55, PAGE 84  
 OF PLATS

GULLS LANDING  
 BOOK 41, PAGE 16  
 OF PLATS

N 1/16, 15 | 16  
 FND. ALUM. CAP  
 FLUSH W/AC



**LEGEND**

- FOUND MONUMENTATION AS SHOWN AND DESCRIBED
- SET MONUMENTATION PER N.R.S. 278.371
- UNIT NUMBER  
 TOTAL RESIDENTIAL UNITS = 204  
 TOTAL COMMON LOTS = 12
- 23 BUILDING NUMBER
- TYPE 1 BUILDING TYPE
- SUBDIVISION BOUNDARY LINE
- STREET CENTERLINE

**SHEET INDEX**

SHEET NO.	DESCRIPTION AND CONTENT
1	TITLE SHEET
2	KEY MAP SURVEY ANALYSIS
3	BUILDING TIES PARKING ASSIGNMENT CONDOMINIUM DWELLING UNIT NUMBERING PLAN
4	BUILDING TIES PARKING ASSIGNMENT CONDOMINIUM DWELLING UNIT NUMBERING PLAN
5	HORIZONTAL PLAN DETAILS VERTICAL PLAN DETAILS LIMITED COMMON ELEMENT SCHEDULE
6	VERTICAL LIMITS SCHEDULE
7	PHASING PLAN

SHEET 2 OF 7