

940216

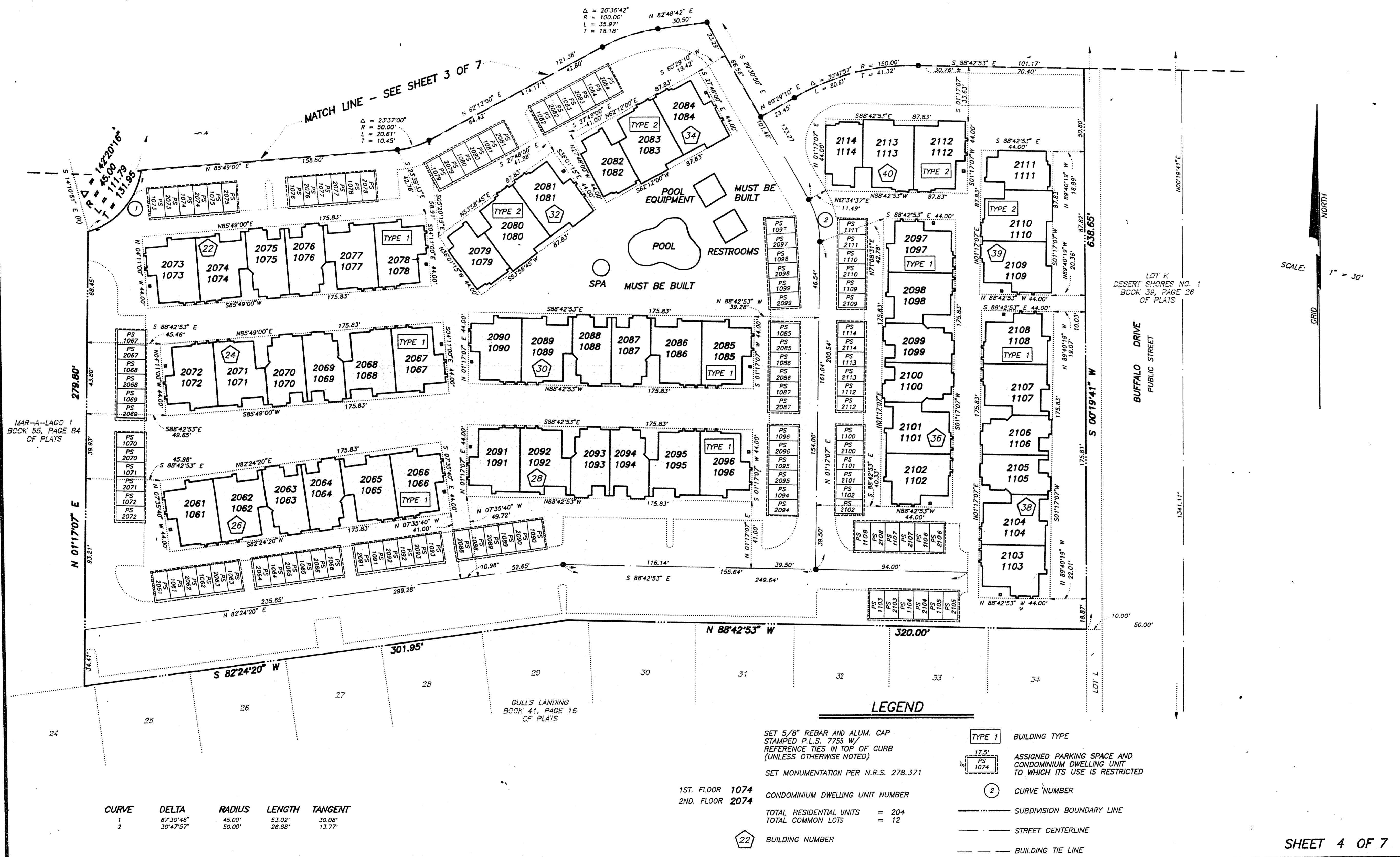
01555

15-17-113

# FINAL MAP OF MAR-A-LAGO 2

## A CONDOMINIUM COMMON INTEREST COMMUNITY

BEING A SUBDIVISION OF ALL OF PARCEL 2 AS SHOWN BY AMENDED PARCEL MAP OF FILE IN FILE 59, PAGE 6 OF PARCEL MAPS IN THE CLARK COUNTY RECORDER'S OFFICE, CLARK COUNTY, NEVADA, LYING WITHIN THE NORTHEAST QUARTER (NE 1/4) OF SECTION 16, TOWNSHIP 20 SOUTH, RANGE 60 EAST, M.D.M., CITY OF LAS VEGAS, CLARK COUNTY, NEVADA



CURVE	DELTA	RADIUS	LENGTH	TANGENT
1	67°30'46"	45.00'	53.02'	30.08'
2	30°47'57"	50.00'	26.88'	13.77'

1ST. FLOOR 1074  
2ND. FLOOR 2074

SET 5/8" REBAR AND ALUM. CAP  
STAMPED P.L.S. 7755 W/  
REFERENCE TIES IN TOP OF CURB  
(UNLESS OTHERWISE NOTED)

SET MONUMENTATION PER N.R.S. 278.371

CONDOMINIUM DWELLING UNIT NUMBER

TOTAL RESIDENTIAL UNITS = 204  
TOTAL COMMON LOTS = 12

22 BUILDING NUMBER

TYPE 1 BUILDING TYPE

17.5' 1074 ASSIGNED PARKING SPACE AND CONDOMINIUM DWELLING UNIT TO WHICH ITS USE IS RESTRICTED

2 CURVE NUMBER

--- SUBDIVISION BOUNDARY LINE

--- STREET CENTERLINE

--- BUILDING TIE LINE

SHEET 4 OF 7

Book 60 Page 45  
4260