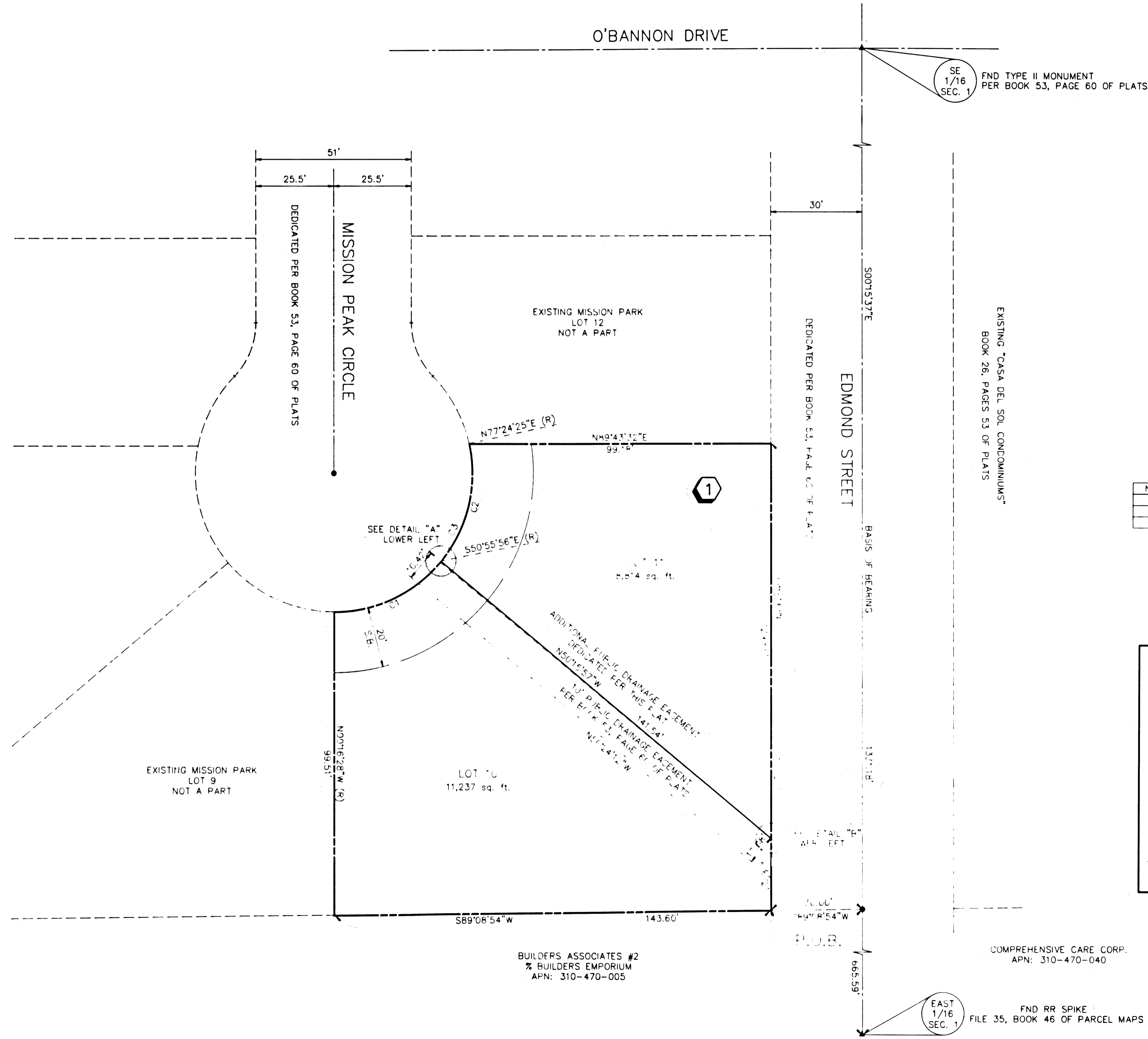


930921

14.17.149
01311

AMENDED PLAT OF MISSION PARK

LOTS 10 AND 11 OF BLOCK 1 OF MISSION PARK AS RECORDED IN BOOK 53, PAGE 60 OF PLATS
BEING A PORTION OF THE E 1/2 OF THE NE 1/4 OF THE SW 1/4 OF THE SE 1/4 OF SECTION 1, T. 21 S., R. 60 E., M.D.M., CITY OF LAS VEGAS, CLARK COUNTY, NEVADA

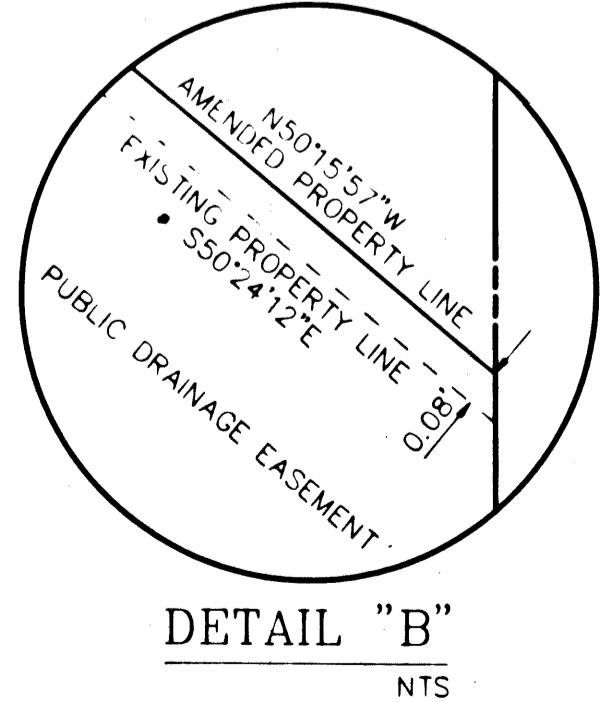
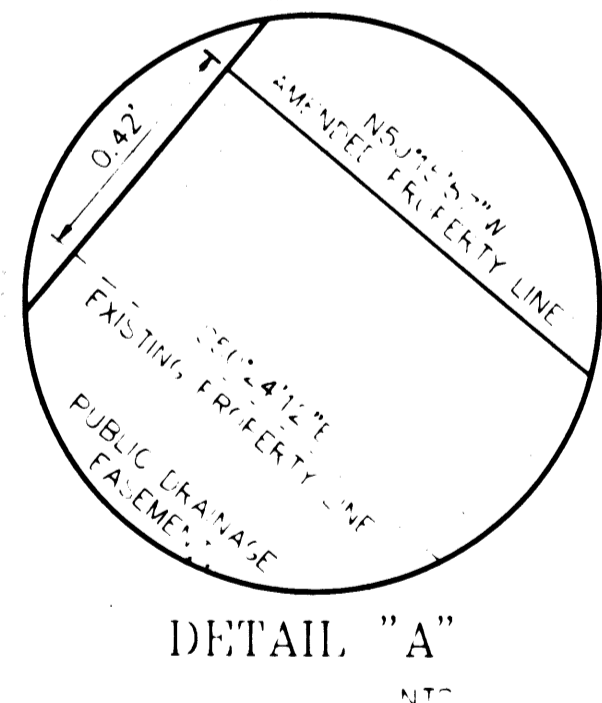


CURVE DATA

No.	RADIUS	DELTA	LENGTH	TANGENT
C1	45.50'	50°39'28"	40.23'	21.54'
C2	45.50'	51°39'39"	41.03'	22.03'
C3	45.50'	102°19'07"	81.25'	56.51'

LEGEND

- ▲ FOUND MONUMENT AS INDICATED
- FND TYPE II MONUMENT PLS 8186 PER BOOK 53, PAGE 60 OF PLATS
- C5 CURVE DATA
- L5 LINE DATA
- 27 LOT NUMBER (TOTAL THIS MAP = 2)
- ① BLOCK NUMBER
- P.U.E. PUBLIC UTILITY EASEMENT
- SETBACK LINE (20' FRONT, 15' SIDE)
- PROPERTY LINE
- BOUNDARY LINE
- CENTERLINE



W.O.#	DATE	REVISION DESCRIPTION	BY
280-A350	05/25/93	LOTS 1, 2	CDK

BUILDERS ASSOCIATES #2
% BUILDERS EMPORIUM
APN: 310-470-005

COMPREHENSIVE CARE CORP.
APN: 310-470-040

BOOK 58 PAGE 49
Amended 4.2.24

