

920915

30-12-157  
00703

# NORTHSTAR ESTATES UNIT 2

BEING A PORTION OF THE NORTH HALF (N 1/2) OF THE SOUTHEAST QUARTER (SE 1/4) OF THE SOUTHWEST QUARTER (SW 1/4) OF SECTION 35, TOWNSHIP 19 SOUTH, RANGE 60 EAST, M.D.M., CITY OF LAS VEGAS, COUNTY OF CLARK, STATE OF NEVADA

SCALE: 1"=60'



## LEGEND

- ▲ FOUND MONUMENT AS INDICATED
- FND. 5/8" REBAR W/ ALUM. CAP PLS 7008
- SET TYPE III MONUMENT PLS 7008
- C5 CURVE DATA
- L5 LINE DATA
- 27 LOT NUMBER (TOTAL THIS MAP = 30)
- ① BLOCK NUMBER
- R/W RIGHT-OF-WAY
- SETBACK LINE (20' FRONT, 15' SIDE)
- PROPERTY LINE
- BOUNDARY LINE
- CENTERLINE

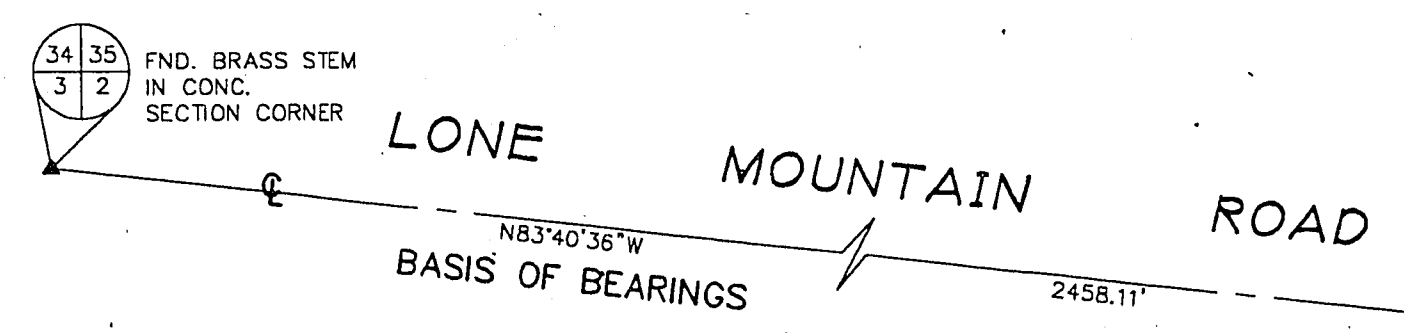
## CURVE TABLE

No.	RADIUS	DELTA	LENGTH	TANGENT
C1	45.50'	111°08'	8.87'	4.45'
C2	45.50'	72°37'17"	57.57'	33.44'
C3	45.50'	38°13'20"	31.23'	16.26'
C4	45.50'	45°06'13"	35.82'	18.89'
C5	45.50'	03°40'06"	2.91'	1.46'
C6	45.50'	150°31'44"	198.95'	---
C7	45.50'	1°01'44"	17.85'	10.25'
C8	15.00'	97°03'33"	25.41'	16.97'
C9	15.00'	82°56'27"	21.71'	13.26'
C10	95.00'	03°37'06"	8.00'	3.00'
C11	65.00'	123°05'	14.07'	7.06'
C12	45.50'	181°34'41"	14.48'	7.30'
C13	45.50'	72°28'17"	57.55'	33.34'
C14	45.50'	44°58'54"	35.72'	18.84'
C15	45.50'	90°08'22"	39.82'	21.28'
C16	45.50'	44°39'49"	35.47'	18.69'
C17	45.50'	20°02'40"	15.92'	8.04'
C18	45.50'	250°31'44"	198.95'	---
C19	14.50'	70°34'44"	17.85'	10.25'
C20	15.00'	90°00'00"	23.56'	15.00'
C22	30.00'	82°56'27"	43.43'	26.51'

## LINE TABLE

No.	BEARING	DISTANCE
L1	N83°20'56"W	40.28'
L2	N03°12'31"E	18.10'
L3	N89°35'31"E	20.00'
L4	N83°20'56"W	20.00'
L5	S06°39'04"W	25.50'
L6	S06°39'04"W	25.50'
L7	S00°24'29"E	41.75'
L8	S00°24'29"E	32.50'
L9	S83°20'56"E	32.50'

NOTE: SET SCRIBED "X" ON TOP OF CURB, AND NAIL AND PLS 7008 TAG IN WALL ON PROPERTY LINE PROJECTIONS.



SHEET 2 OF 2

BOOK 53 PAGE 97 4175-2