

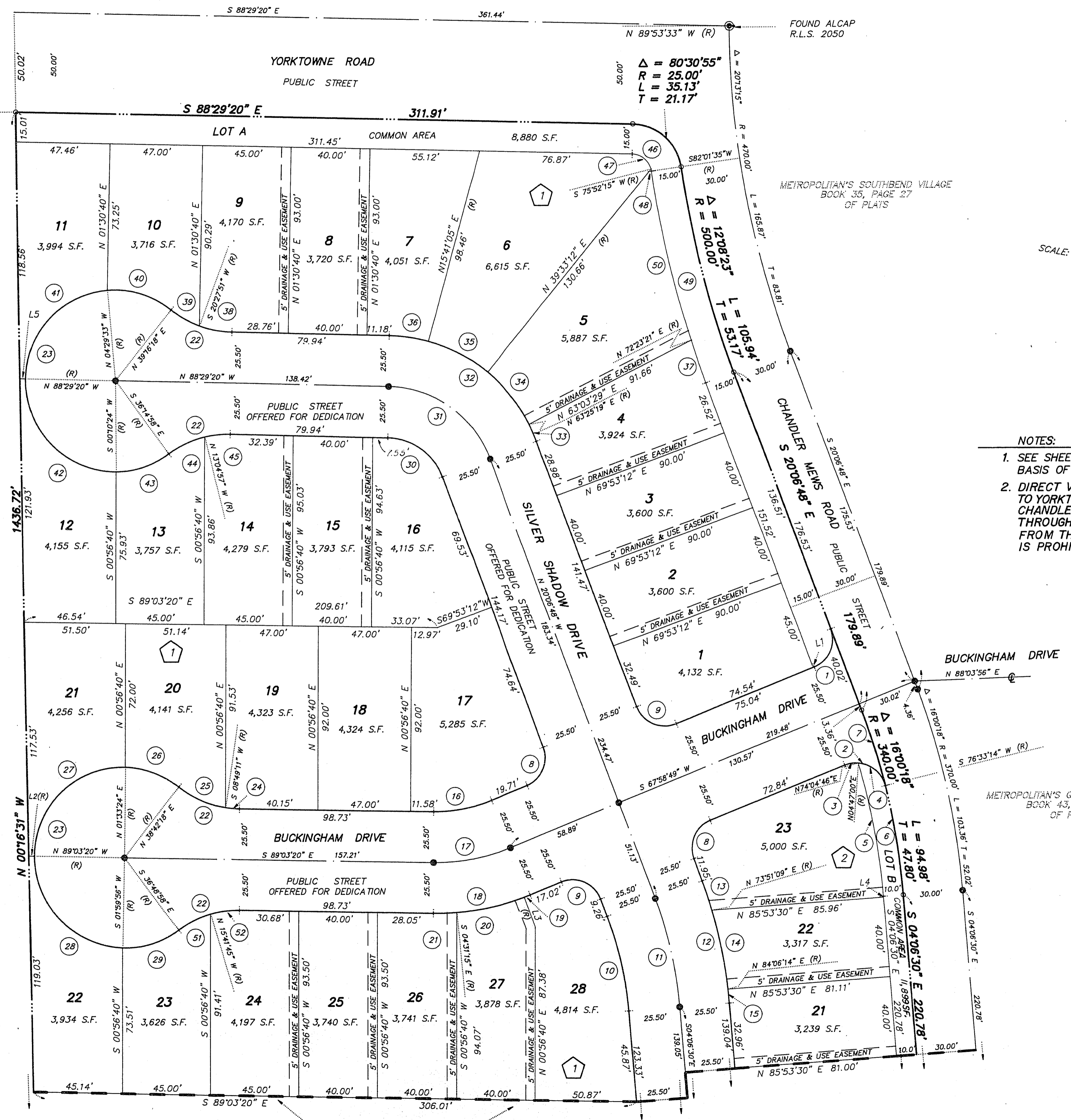
Book No. 900625

METROPOLITAN'S SONTERA

Instrument No. 00780

BEING A SUBDIVISION OF PARCEL 1 AS SHOWN BY MAP THEREOF ON FILE IN FILE 56, PAGE 91 OF PARCEL MAPS IN THE CLARK COUNTY RECORDER'S OFFICE, CLARK COUNTY, NEVADA, LYING WITHIN THE SOUTHWEST QUARTER (SW1/4) OF SECTION 14, TOWNSHIP 20 SOUTH, RANGE 60 EAST, M.D.M., CITY OF LAS VEGAS, CLARK COUNTY, NEVADA

METROPOLITAN'S COLONEY GRANT
BOOK 38, PAGE 54
OF PLATS



LINE	BEARING	DISTANCE
L1	N 67°58'49" E	0.52'
L2	N 89°53'30" W	3.01'
L3	S 90°35'46" E	16.00'
L4	S 04°06'30" E	0.44'
L5	N 88°29'20" W	3.02'

CURVE	DELTA	RADIUS	LENGTH	TANGENT
1	88°05'37"	15.00'	23.06'	14.51'
2	98°34'25"	15.00'	25.81'	17.43'
3	28°48'11"	15.00'	7.02'	3.57'
4	71°46'14"	15.00'	18.79'	10.85'
5	11°48'44"	330.00'	68.03'	34.14'
6	09°20'16"	340.00'	55.41'	27.77'
7	08°40'02"	340.00'	39.56'	19.80'
8	88°05'37"	15.00'	23.06'	14.51'
9	91°54'23"	15.00'	24.06'	15.51'
10	16°00'18"	174.50'	48.74'	24.53'
11	16°00'18"	200.00'	55.87'	28.12'
12	16°00'18"	225.50'	62.99'	31.70'
13	03°37'57"	225.50'	15.61'	7.81'
14	10°15'05"	225.50'	40.35'	20.23'
15	01°47'16"	225.50'	7.04'	3.52'
16	22°57'51"	74.50'	29.86'	15.13'
17	22°57'51"	100.00'	40.08'	20.31'
18	22°57'51"	125.50'	50.30'	25.49'
19	01°25'25"	125.50'	3.12'	1.56'
20	16°04'31"	125.50'	35.21'	17.72'
21	05°27'55"	125.50'	11.97'	5.99'
22	37°45'38"	50.00'	32.95'	17.10'
23	25°31'17"	45.50'	202.92'	
24	07°52'31"	50.00'	6.87'	3.44'
25	29°37'07"	50.00'	26.08'	13.34'
26	37°08'54"	45.50'	29.50'	15.29'
27	90°36'44"	45.50'	71.96'	45.99'
28	89°56'44"	45.50'	70.63'	44.67'
29	38°48'54"	45.50'	30.82'	16.03'
30	69°22'32"	30.00'	35.80'	20.38'
31	69°22'32"	55.50'	66.23'	37.70'
32	68°22'32"	81.00'	96.66'	55.02'
33	06°27'53"	81.00'	9.14'	4.57'
34	23°52'07"	81.00'	33.74'	17.12'
35	23°52'07"	81.00'	33.74'	17.12'
36	14°02'25"	81.00'	20.04'	10.07'
37	02°30'09"	515.00'	22.49'	11.25'
38	18°57'11"	50.00'	16.54'	8.35'
39	18°44'22"	50.00'	16.41'	8.28'
40	43°45'51"	45.50'	34.75'	18.27'
41	83°59'47"	45.50'	66.70'	40.97'
42	91°20'16"	45.50'	72.53'	46.57'
43	32°25'22"	45.50'	28.92'	14.97'
44	23°01'01"	50.00'	20.22'	10.25'
45	14°35'37"	50.00'	12.74'	6.40'
46	80°30'55"	10.00'	14.05'	8.47'
47	74°21'55"	10.00'	12.98'	7.58'
48	08°08'20"	10.00'	1.07'	0.54'
49	12°08'23"	515.00'	109.12'	54.76'
50	08°08'15"	515.00'	86.63'	43.42'
51	21°37'12"	50.00'	18.43'	9.32'
52	16°38'25"	50.00'	14.52'	7.31'

NOTES:
 1. SEE SHEET 1 OF 4 FOR BASIS OF BEARINGS
 2. DIRECT VEHICULAR ACCESS TO YORKTOWNE ROAD OR CHANDLER MEWS ROAD THROUGH THE COMMON AREA FROM THE ABUTTING LOTS IS PROHIBITED.

LEGEND

- SET 5/8" REBAR AND ALUM. CAP STAMPED R.L.S. 2050 W/ BRASS CAP TIES IN TOP OF CURB (UNLESS OTHERWISE NOTED)
- FOUND MONUMENTATION AS SHOWN AND DESCRIBED
- POINT NOT FOUND OR SET
- 15 LOT NUMBER TOTAL LOTS IN SUBDIVISION = 97
- ① BLOCK NUMBER
- ③ CURVE NUMBER
- L1 LINE SEGMENT NUMBER
- SUBDIVISION BOUNDARY LINE

SETBACKS

- FRONT-TO BUILDING 10'
- TO GARAGE 16'
- REAR - 10'
- SIDE - ON CORNER 10'