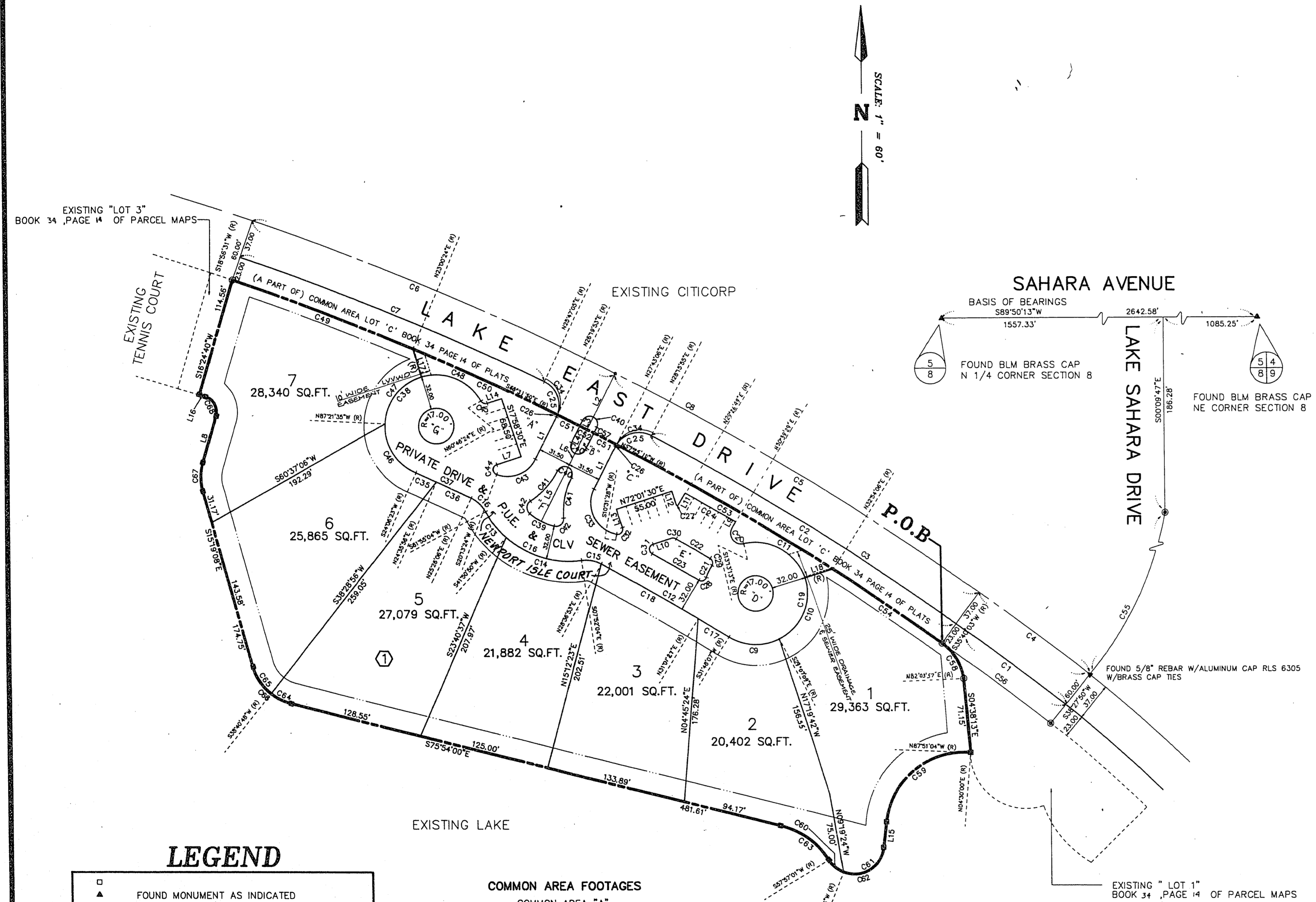


NORTHSHORE ESTATES

BEING A PORTION OF THE NE 1/4 OF SEC. 8 T. 21 S., R. 60 E., M.D.M., CITY OF LAS VEGAS, CLARK COUNTY, NEVADA



CURVE DATA TABLE

No.	RADIUS	DELTA	LENGTH	TANGENT
C1	2635.17	02°47'47"	121.61	64.32
C2	2635.17	07°24'08"	340.45	170.46
C3	2635.17	10°11'55"	469.06	233.15
C4	2672.16	02°47'47"	130.42	65.22
C5	2672.16	06°38'34"	403.08	201.52
C6	2672.16	08°4'58"	376.98	188.80
C7	2635.17	06°50'34"	314.71	157.54
C8	2672.16	18°31'51"	910.47	459.69
C9	49.00	58°55'16"	50.39	27.58
C10	49.00	80°29'34"	68.84	41.48
C11	49.00	85°36'30"	73.21	45.38
C12	2504.17	03°11'14"	139.29	69.87
C13	90.00	20°04'14"	31.53	15.93
C14	90.00	49°42'54"	78.09	41.70
C15	30.00	36°28'58"	19.10	9.89
C16	90.00	69°47'08"	108.82	62.77
C17	2504.17	00°46'40"	33.59	16.99
C18	2504.17	02°24'34"	105.31	52.68
C19	49.00	225°01'20"	192.44	---
C20	10.00	133°16'22"	23.26	23.15
C21	49.00	14°25'02"	12.33	6.20
C22	2559.67	00°50'31"	37.61	18.80
C23	2536.17	01°08'45"	50.72	25.36
C24	2662.17	01°12'40"	55.00	27.50
C25	25.00	85°41'06"	37.99	21.18
C26	25.00	05°33'20"	2.42	1.21
C27	1.00	131°58'21"	2.30	2.24
C28	5.00	102°14'48"	8.92	6.20
C29	5.00	89°11'50"	8.65	5.00
C30	5.00	47°43'27"	4.16	2.21
C31	5.00	132°33'12"	11.57	11.38
C32	5.00	118°28'58"	10.34	8.40
C33	30.00	106°30'01"	55.76	40.18
C34	25.00	91°14'25"	39.81	25.55
C35	2504.17	00°29'33"	21.53	10.76
C36	2504.17	00°50'10"	36.54	18.27
C37	2504.17	01°18'43"	58.07	28.04
C38	49.00	216°40'01"	185.30	---
C39	58.00	26°16'32"	26.60	13.54
C40	7.50	180°00'00"	23.56	---
C41	74.00	30°48'58"	39.75	20.37
C42	7.50	107°38'23"	14.09	10.25
C43	30.00	83°11'54"	43.56	26.63
C44	5.00	141°48'08"	12.37	14.44
C45	5.00	78°44'55"	6.87	4.07
C46	49.00	68°32'02"	58.61	33.38
C47	49.00	70°52'47"	60.62	34.87
C48	49.00	77°15'12"	66.07	39.15
C49	2612.17	04°03'53"	185.32	92.70
C50	2612.17	03°19'29"	151.58	75.81
C51	2612.17	00°31'44"	24.12	12.06
C52	2612.17	00°18'44"	15.00	7.50
C53	2612.17	05°10'59"	236.30	118.23
C54	2612.17	02°45'58"	126.10	63.06
C55	2282.72	36°37'57"	1538.94	800.00
C56	2612.17	02°47'47"	127.49	63.76
C57	2612.17	16°43'32"	762.54	384.00
C58	50.00	46°23'54"	46.49	21.43
C59	75.00	88°07'14"	115.35	72.58
C60	29.00	36°24'45"	18.43	9.54
C61	29.00	105°09'30"	53.23	37.90
C62	29.00	141°34'15"	71.68	83.21
C63	75.00	43°51'01"	57.40	30.19
C64	50.00	24°34'48"	21.45	10.89
C65	50.00	36°00'04"	31.42	16.25
C66	50.00	60°34'52"	30.87	29.21
C67	50.00	31°43'48"	27.69	14.21
C68	15.00	90°00'00"	23.56	15.00

LINE DATA TABLE

No.	BEARING	DISTANCE
L1	N27°01'30"E	46.39
L2	N27°01'30"E	46.62
L3	N27°01'30"E	13.38
L4	N27°01'30"E	25.50
L5	S27°01'30"W	52.94
L6	S27°01'30"W	20.09
L7	N72°01'30"E	24.33
L8	S16°24'40"W	46.58
L9	S30°03'08"W	17.08
L10	S72°01'30"W	18.29
L11	S30°03'08"W	13.12
L12	S17°58'30"E	13.45
L13	N17°58'30"W	16.35
L14	N72°01'30"E	14.46
L15	S06°22'46"W	24.69
L16	N73°35'20"W	6.00
L17	N16°28'48"W	28.08
L18	N72°23'17"E	28.08

LEGEND

- FOUND MONUMENT AS INDICATED
- FND. 5/8" REBAR W/ALUM. CAP RLS 6305
- SET 5/8" REBAR W/ALUM. CAP R.L.S. 6305
- C1 CURVE DATA
- L1 LINE DATA
- 27 LOT NUMBER (TOTAL THIS SHEET = 7)
- ① BLOCK NUMBER
- P.U.E. PUBLIC UTILITY EASEMENT
- SETBACK LINE (20' FRONT, 10' SIDE, 20' REAR)
- PROPERTY LINE
- BOUNDARY LINE
- FND. BRASS CAP IN CONCRETE

COMMON AREA FOOTAGES

- COMMON AREA "A" 3,709 sq. ft.
- COMMON AREA "B" 358 sq. ft.
- COMMON AREA "C" 5,872 sq. ft.
- COMMON AREA "D" 908 sq. ft.
- COMMON AREA "E" 1,272 sq. ft.
- COMMON AREA "F" 1,337 sq. ft.
- COMMON AREA "G" 908 sq. ft.