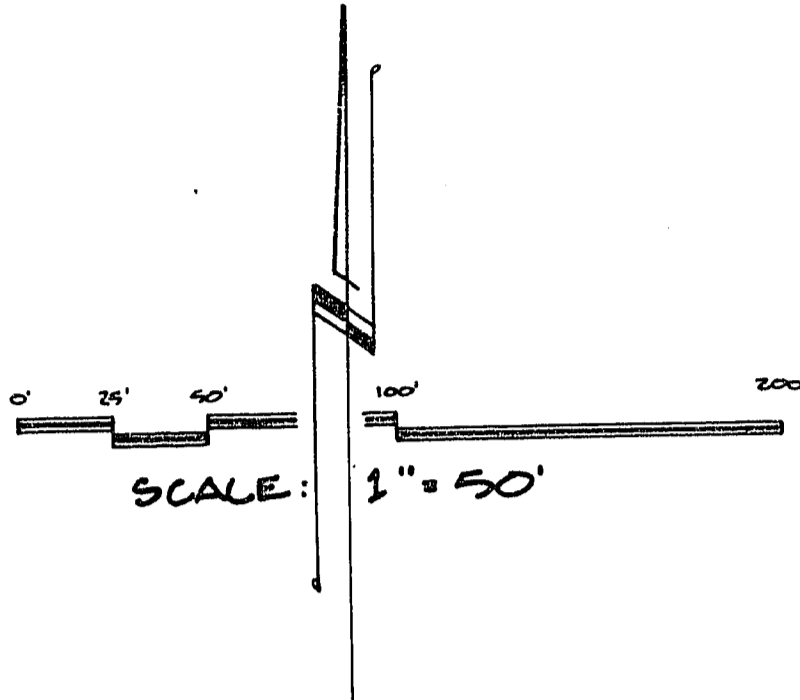


25-12-91

MISSION RIDGE VILLAGE

(A CONDOMINIUM SUBDIVISION)

A DIVISION OF LOT 1 OF P.M. FILE 58, PG. 26, LYING IN THE N.W. 1/4 OF THE N.E. 1/4 OF SECTION 36, T. 20 S., R. 60 E., M.B.D. & M., CITY OF LAS VEGAS, STATE OF NEVADA



LEGEND:

- MONUMENTS FOUND AS NOTED.
- SET 3/8" REBAR (AL. CAP R.L.S. 710) WITH BRASS CAP TIES.
- (M) RADIAL LINE BEARINGS.
- LI LINE DATA - SEE TABLE.
- CI CURVE DATA - SEE TABLE.
- S-A-7C-U DWELLING UNIT DESIGNATION.
- L UNIT(S) (DOWNSTAIRS) UNIT UNIT NUMBER.
- BUILDING TYPE.
- BUILDING NUMBER.
- BUILDING LOCATION THE LINE.

NOTE:

ALL BOUNDARY DIMENSIONS SHOWN HEREON ARE PER PARCEL MAP FILE 58, PAGE 26.

LINE TABLE:

LINE	BEARING	DISTANCE
L1	S 89° 00' 00" W	100.00
L2	S 89° 00' 00" W	100.00
L3	N 89° 00' 00" E	100.00
L4	N 89° 00' 00" E	100.00
L5	S 89° 00' 00" W	100.00
L6	S 89° 00' 00" W	100.00
L7	N 89° 00' 00" E	100.00
L8	N 89° 00' 00" E	100.00
L9	S 89° 00' 00" W	100.00
L10	S 89° 00' 00" W	100.00
L11	N 89° 00' 00" E	100.00
L12	N 89° 00' 00" E	100.00
L13	S 89° 00' 00" W	100.00
L14	S 89° 00' 00" W	100.00
L15	N 89° 00' 00" E	100.00
L16	N 89° 00' 00" E	100.00
L17	S 89° 00' 00" W	100.00
L18	S 89° 00' 00" W	100.00
L19	N 89° 00' 00" E	100.00
L20	N 89° 00' 00" E	100.00
L21	S 89° 00' 00" W	100.00
L22	S 89° 00' 00" W	100.00
L23	N 89° 00' 00" E	100.00
L24	N 89° 00' 00" E	100.00
L25	S 89° 00' 00" W	100.00
L26	S 89° 00' 00" W	100.00
L27	N 89° 00' 00" E	100.00
L28	N 89° 00' 00" E	100.00
L29	S 89° 00' 00" W	100.00
L30	S 89° 00' 00" W	100.00

BASIS OF BEARINGS:

THE SOUTH LINE OF THE NORTH 1/2 OF THE NORTHEAST 1/4 OF SECTION 36, T. 20 S., R. 60 E., M.B.D. & M., BETWEEN MONUMENTS FOUND, AND NOTED AS N. 89° 00' 00" E. ON PARCEL MAP FILE 58, PAGE 26.

PENCHMARK:

C.I.V. BENCHMARK OF PROPOSED BEING A 2" X 1" ALUMINUM PLATE WITH DRIVE NUBS @ S.E. COR. FALCON LANE & BANDO IN TOP OF CONC. CURB. EL. = 2297.53

CURVE TABLE:

CURVE	APD	PC	PVI	PT	RADIUS	TAN LENGTH
C1	24.87	81.00	81.00	81.00	150.00	88.80
C2	102.40	81.00	81.00	81.00	150.00	88.80
C3	39.27	81.00	81.00	81.00	150.00	88.80
C4	102.40	81.00	81.00	81.00	150.00	88.80
C5	102.40	81.00	81.00	81.00	150.00	88.80
C6	102.40	81.00	81.00	81.00	150.00	88.80
C7	102.40	81.00	81.00	81.00	150.00	88.80
C8	102.40	81.00	81.00	81.00	150.00	88.80
C9	102.40	81.00	81.00	81.00	150.00	88.80
C10	102.40	81.00	81.00	81.00	150.00	88.80
C11	102.40	81.00	81.00	81.00	150.00	88.80
C12	102.40	81.00	81.00	81.00	150.00	88.80
C13	102.40	81.00	81.00	81.00	150.00	88.80
C14	102.40	81.00	81.00	81.00	150.00	88.80
C15	102.40	81.00	81.00	81.00	150.00	88.80
C16	102.40	81.00	81.00	81.00	150.00	88.80
C17	102.40	81.00	81.00	81.00	150.00	88.80
C18	102.40	81.00	81.00	81.00	150.00	88.80
C19	102.40	81.00	81.00	81.00	150.00	88.80
C20	102.40	81.00	81.00	81.00	150.00	88.80
C21	102.40	81.00	81.00	81.00	150.00	88.80
C22	102.40	81.00	81.00	81.00	150.00	88.80
C23	102.40	81.00	81.00	81.00	150.00	88.80
C24	102.40	81.00	81.00	81.00	150.00	88.80
C25	102.40	81.00	81.00	81.00	150.00	88.80
C26	102.40	81.00	81.00	81.00	150.00	88.80
C27	102.40	81.00	81.00	81.00	150.00	88.80
C28	102.40	81.00	81.00	81.00	150.00	88.80
C29	102.40	81.00	81.00	81.00	150.00	88.80
C30	102.40	81.00	81.00	81.00	150.00	88.80
C31	102.40	81.00	81.00	81.00	150.00	88.80
C32	102.40	81.00	81.00	81.00	150.00	88.80
C33	102.40	81.00	81.00	81.00	150.00	88.80
C34	102.40	81.00	81.00	81.00	150.00	88.80
C35	102.40	81.00	81.00	81.00	150.00	88.80
C36	102.40	81.00	81.00	81.00	150.00	88.80
C37	102.40	81.00	81.00	81.00	150.00	88.80
C38	102.40	81.00	81.00	81.00	150.00	88.80
C39	102.40	81.00	81.00	81.00	150.00	88.80
C40	102.40	81.00	81.00	81.00	150.00	88.80
C41	102.40	81.00	81.00	81.00	150.00	88.80
C42	102.40	81.00	81.00	81.00	150.00	88.80
C43	102.40	81.00	81.00	81.00	150.00	88.80
C44	102.40	81.00	81.00	81.00	150.00	88.80

