

PLEASE
Call before
you Dig
1-800-227-2800

PLEASE
Call before
you Overhead
1-702-255-68



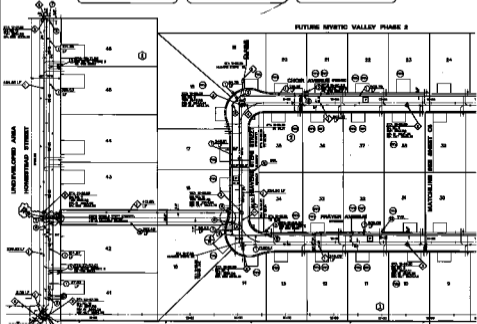
LOCATION MAP

CONSTRUCTION NOTE
SEE SHEET 20 FOR LAYOUT OF THE
SEE SHEET 21 FOR LAYOUT OF THE
SEE SHEET 22 FOR LAYOUT OF THE
SEE SHEET 23 FOR LAYOUT OF THE
SEE SHEET 24 FOR LAYOUT OF THE

- SEWER CONSTRUCTION NOTES**
- 1. INSTALL 12" POLY BUTYLENE SEWER LINE
 - 2. INSTALL 12" POLY BUTYLENE SEWER LINE FOR 100' LENGTH
 - 3. INSTALL 12" POLY BUTYLENE SEWER LINE FOR 100' LENGTH
 - 4. 12" DIA.
 - 5. 12" DIA.
 - 6. INSTALL 12" POLY BUTYLENE SEWER LINE FOR 100' LENGTH
 - 7. INSTALL 12" POLY BUTYLENE SEWER LINE FOR 100' LENGTH
 - 8. INSTALL 12" POLY BUTYLENE SEWER LINE FOR 100' LENGTH

GENERAL CONSTRUCTION
GENERAL SUPPLY - 100' DIA.
GENERAL SUPPLY - 100' DIA.

FUTURE MYSTIC VALLEY PHASE 2



PROPOSED
SPRING MOUNTAIN RANCH

[Signature]
DATE: 10/21/01

APPROVALS
DATE: 10/21/01

REGISTERED AMERICAN HOMES OF NEVADA, INC.
1000 S. RAY BLVD., SUITE 100, LAS VEGAS, NV 89105
TEL: 702-735-1100 FAX: 702-735-1101

REGISTERED UTILITY PLAN
(HOMEST VALLEY)
MYSTIC VALLEY PHASE 1

DATE: 10/21/01
SCALE: AS SHOWN
BY: [Signature]