

Call before you Dig  
1-800-227-2600

Call before you Overhead  
1-702-593-6111

**REDUCED PRESSURE PRINCIPLE ASSEMBLY**

APPROVED REDUCED PRESSURE PRINCIPLE ASSEMBLY(S) SHALL BE INSTALLED PER THE UDACS PLATE NO. 11A. NO WATER SHALL BE TAKEN FROM A SERVICE REQUIRING BACKFLOW PREVENTION UNTIL THE REDUCED PRESSURE PRINCIPLE ASSEMBLY HAS BEEN SUCCESSFULLY TESTED BY THE LVVWD. ANY BLOCK WALL OR OTHER FENCE MATERIAL SHALL BE DESIGNED AND CONSTRUCTED AROUND THE OUTSIDE OF THE EASEMENT(S) TO ALLOW THE DISTRICT DIRECT ACCESS FROM THE ADJACENT RIGHT-OF-WAY.

1 - 1"  
3 - 3/4"

**NOTES:**

ALL DIMENSIONS TO UTILITIES ARE TO CENTERLINE OF PIPE UNLESS INDICATED OTHERWISE

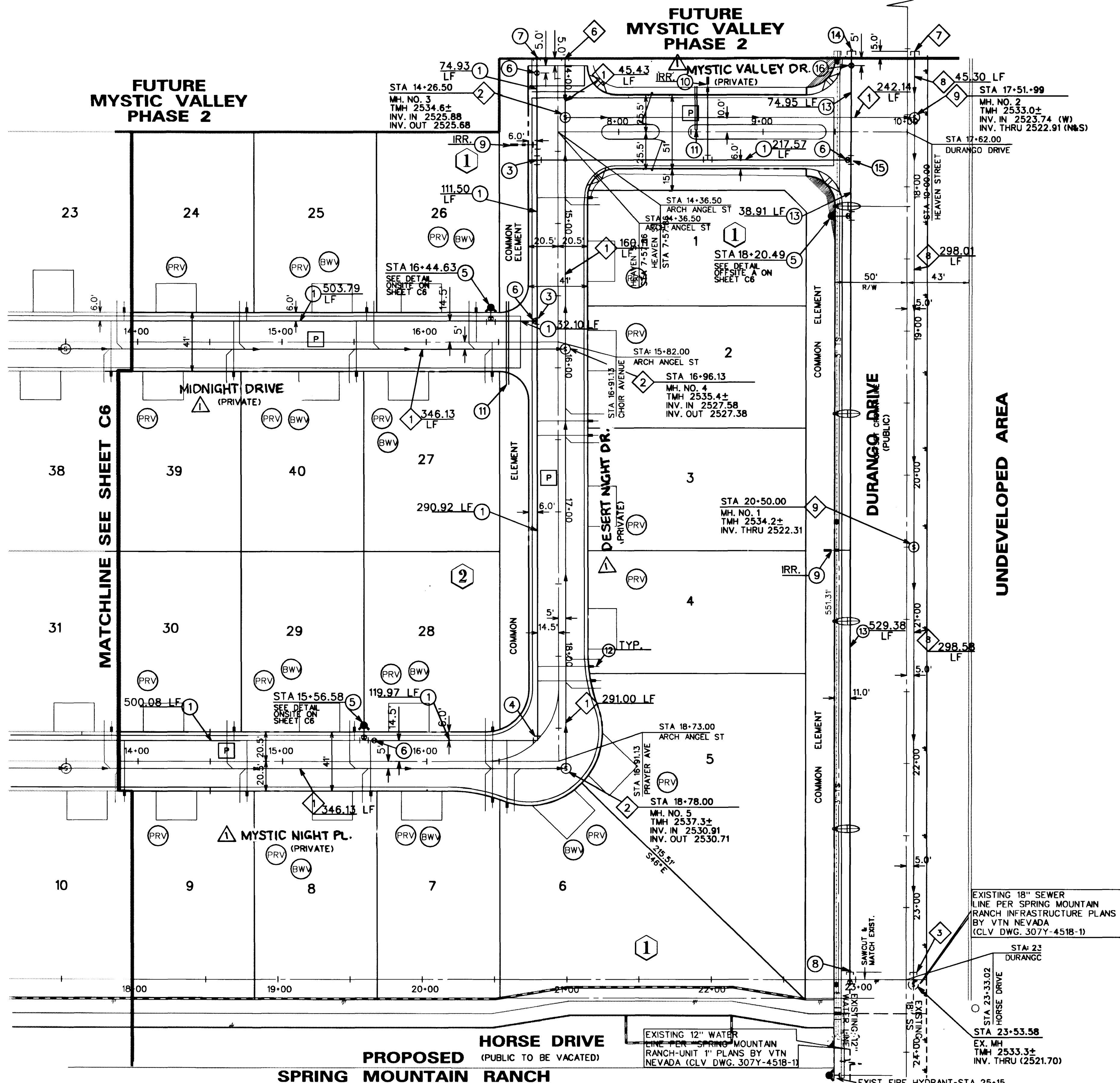
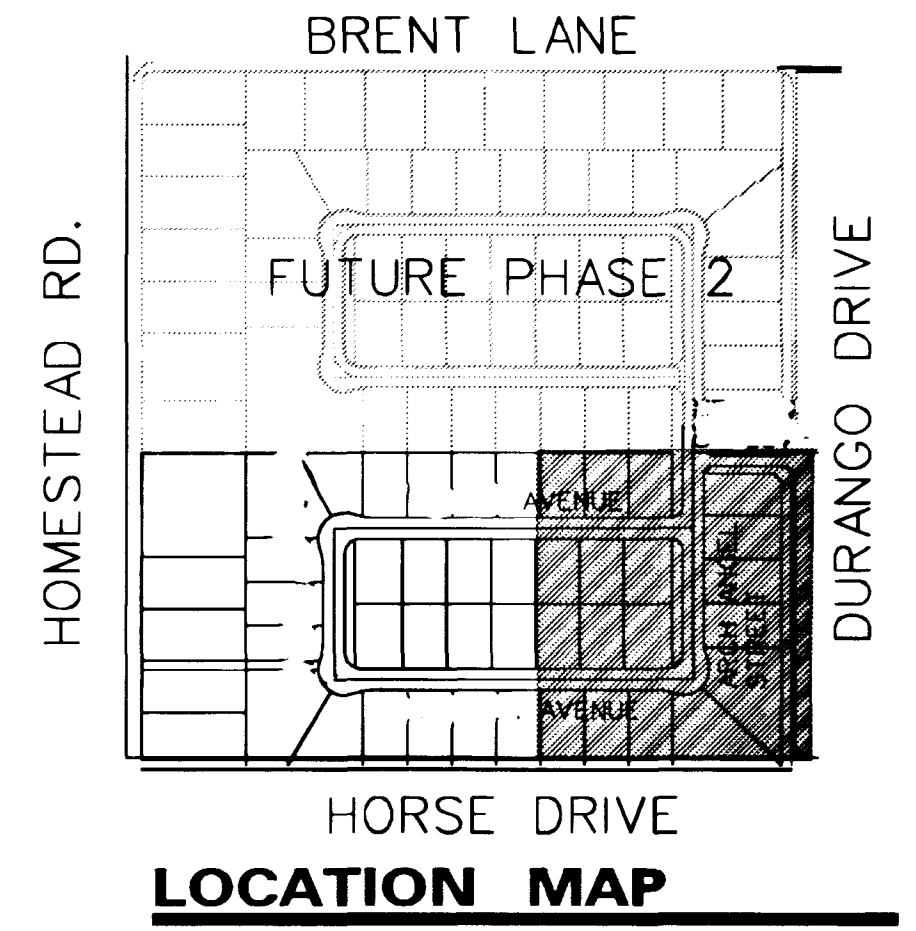
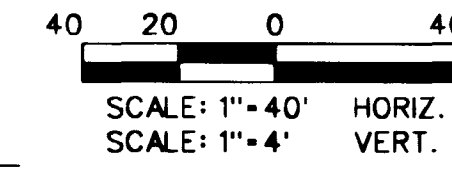
CONTRACTOR SHALL VERIFY HORIZONTAL AND VERTICAL ALIGNMENT OF EXISTING UTILITIES AND TO NOTIFY THE DESIGN ENGINEER IMMEDIATELY ON ANY DISCREPANCIES PRIOR TO CONSTRUCTION

SEE SHEET C4 FOR LVVWD STANDARD NOTES

P PRIVATE DRIVE, P.U.E., C.L.V. SEWER EASEMENT AND PUBLIC DRAINAGE EASEMENT (TO BE PRIVATELY MAINTAINED)

**CONSTRUCTION NOTE**

ALL EXISTING UTILITY STRUCTURES WITHIN CONSTRUCTION AREA SHALL BE ADJUSTED TO MATCH FINISH GRADE (I.E. WV, BOX, WMH, ANNODE BOX, FH, TEL BOX, ETC.)



**SEWER CONSTRUCTION NOTES**

- 1 INSTALL 8" PVC PUBLIC SANITARY SEWER LINE
- 2 INSTALL 48" SANITARY SEWER MANHOLE PER DCSWC DWG. SD-1
- 3 REMOVE EXISTING CAP AND CONNECT PROPOSED SEWERLINE TO EXISTING SEWERLINE
- 4 4" WYE
- 5 4" SEWER LATERAL
- 6 INSTALL 8" CAP FOR FUTURE USE
- 7 INSTALL 18" CAP FOR FUTURE USE
- 8 INSTALL 18" PVC PUBLIC SANITARY SEWER
- 9 INSTALL 60" SANITARY SEWER MANHOLE PER DCSWC DWG. SD-1
- BWV INSTALL SEWER BACKWATER VALVE PER DCSWC DWG. SD-29 (SEE DETAIL ON SHEET C4)

**WATER CONST. NOTES / QUANTITIES**

- 1 INSTALL 8" PVC WATER LINE 2,951 LF
- 2 INSTALL 8" - 45° BEND 2 EA
- 3 INSTALL 8" - TEE 4 EA
- 4 INSTALL 8" - 90° BEND 2 EA
- 5 INSTALL FIRE HYDRANT ASSEMBLY (PER UDACS PL. NO. 7) (INCLUDES TEE, 6" PIPE, GATE VALVE & RISER) 7 EA
- 6 INSTALL 8" GATE VALVE. (VALVES SHALL NOT BE LOCATED IN STREET VALLEY GUTTERS) 10 EA
- 7 INSTALL 8" CAP & 2" BLOWOFF ASSEMBLY 2 EA
- 8 REMOVE EXISTING CAP AND CONNECT PROPOSED WATERLINE TO EXISTING WATER LINE 2 EA
- 9 INSTALL 3/4" WATER METER WITH 3/4" RPPA (UDACS PL. 10) 3 EA
- 10 INSTALL 1" WATER METER WITH 1" RPPA (UDACS PL. 10) 1 EA
- 11 INSTALL 2- 4" IRRIGATION SLEEVES 176 LF
- 12 INSTALL 3/4" WATER METER (UDACS PLATE 1B) 46 EA
- 13 INSTALL 12" PVC WATER LINE 643 LF
- 14 INSTALL 12" CAP & 2" BLOWOFF ASSEMBLY 1 EA
- 15 INSTALL 12" X 8" TEE 1 EA
- 16 INSTALL 12" GATE VALVE 1 EA
- 17 INSTALL 10" X 8" REDUCER 1 EA
- 18 INSTALL 8" DUCTILE IRON PIPE 382 LF
- 19 INSTALL WROUGHT IRON CRASH GATE PER CLV STDS. 2 EA
- PRV INSTALL PRESSURE REDUCING VALVE 40 EA

**SEWER CONTRIBUTION**

AVERAGE FLOW - .0115 MGD  
PEAK FLOW - .0380 MGD

**LAS VEGAS FIRE DEPARTMENT**

THE FIRE FLOW REQUIREMENT IS 1,500 GALLONS PER MINUTE AT 20 PSI RESIDUAL PRESSURE.

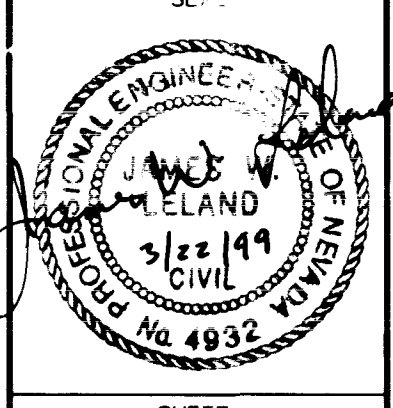
BASED ON:  
 SQUARE FOOTAGE: 3,600 S.F. (MAX)  
 BUILDING HEIGHT: 24 FEET  
 NUMBER OF STORIES: 2 FLOORS  
 TYPE OF CONSTRUCTION: V-N  
 OCCUPANCY: RESIDENTIAL  
 FULL AUTOMATIC FIRE SPRINKLER SYSTEM: NO

REVIEWED BY: *[Signature]* 3/23/99 DATE  
**APPROVALS**  
 EX. MH TMH 2533.3± INV. THRU (2521.70)  
 LVVWD. *[Signature]* 4/23/99 DATE

RICHMOND AMERICAN HOMES OF NEVADA INC.  
 7280 WEST PEAK STE. 212  
 LAS VEGAS, NV 89128  
 (702) 240-6600

MASTER UTILITY PLAN (EAST HALF)  
 MYSTIC VALLEY PHASE I

DRAWN BY: G. HOWELL, W. KIM 11/4/98  
 DESIGNED BY: E. SERRANO, M. BELEN 11/4/98  
 CHECKED BY: M. SEEBECK  
 PROJECT NO: 98-9031-03  
 SCALE: 1"=40' HORIZ.



SHEET C5  
 5 OF 18 SHEETS  
 DRAWING NO. 307Y-4599-1

