

EX. FOXFIRE RANCH PHASE 3 - UNIT 4
CLV DWG #107Y-4288-4

NOTE:
ALL ON-SITE SEWERS ARE
PRIVATELY OWNED AND MAINTAINED

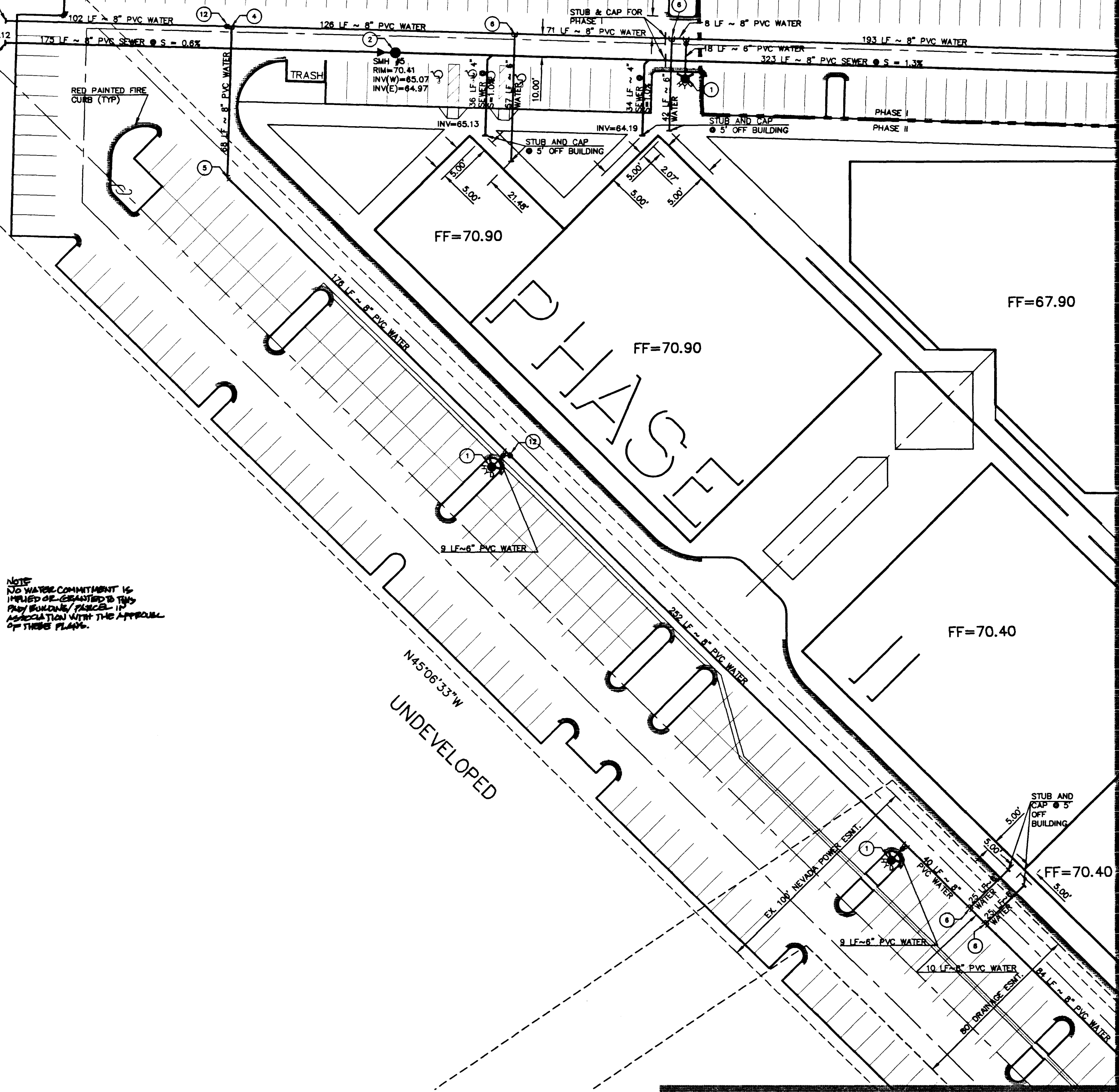
UNDEVELOPED

N88°22'13"W 615.75'

NOTE:
NO WATER COMMITMENT IS
IMPLIED OR GRANTED TO THIS
PAD/BUILDING/PARCEL IN
ASSOCIATION WITH THE APPROVAL
OF THESE PLANS.

STUB AND CAP
8" WATER LINE

STUB AND CAP
8" SEWER LINE



NOTE:
NO WATER COMMITMENT IS
IMPLIED OR GRANTED TO THIS
PAD/BUILDING/PARCEL IN
ASSOCIATION WITH THE APPROVAL
OF THESE PLANS.

NOTES:

GENERAL
ANY BLOCK WALL OR OTHER FENCE MATERIAL SHALL BE DESIGNED AND
CONSTRUCTED OUTSIDE OF THE EASEMENT(S) TO ALLOW THE DISTRICT
DIRECT ACCESS FROM THE ADJACENT RIGHT-OF-WAY.

EXISTING UTILITY NOTE

EXISTING UTILITY LOCATIONS SHOWN HEREON ARE APPROXIMATE ONLY. IT SHALL
BE THE CONTRACTOR'S RESPONSIBILITY TO DETERMINE THE EXACT VERTICAL
AND HORIZONTAL LOCATION OF ALL EXISTING UNDERGROUND UTILITIES PRIOR TO
COMMENCING CONSTRUCTION. NO REPRESENTATION IS MADE THAT ALL EXISTING
UTILITIES ARE SHOWN HEREON. THE ENGINEER ASSUMES NO RESPONSIBILITY FOR
UTILITIES NOT SHOWN OR FOR UTILITIES NOT SHOWN IN THEIR PROPER LOCATION.
CALL BEFORE YOU DIG: 1-800-227-2600.

CONSTRUCTION NOTES & QUANTITIES

1	INSTALL FIRE HYDRANT ASSEMBLY PER UDS PLATE NO. 7	3	EA
2	CONSTRUCT SEWER MANHOLE PER C.C. AREA STANDARD #403	1	EA
3	REMOVE CAP AND CONNECT TO EX. 8" SEWER STUB	0	EA
4	8" x 8" x 8" TEE	1	EA
5	8" x 45" BEND	1	EA
6	8" x 8" x 8" TEE	4	EA
7	8" x 8" REDUCER	0	EA
8	8" x 90" BEND	0	EA
9	8" x 90" BEND	0	EA
10	8" x 2" FSM (SEE SHT. 5)	0	EA
11	REMOVE CAP AND CONNECT TO EX. 8" WATER STUB	0	EA
12	8" GATE VALVE	2	EA
13	250W HPS STLT.	0	EA
14	ST. LT. CONDUIT	0	LF
15	3" TRAFFIC SIGNAL CONDUIT	0	LF
	8" WATER LINE	1130	LF
	8" WATER LINE	167	LF
	8" SEWER LINE	498	LF
	4" SEWER LINE	70	LF

**MATCH LINE SHEET 7
LAS VEGAS VALLEY WATER DISTRICT
STANDARD NOTES**

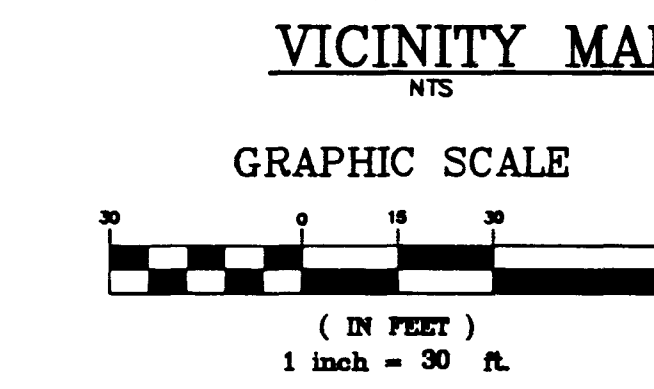
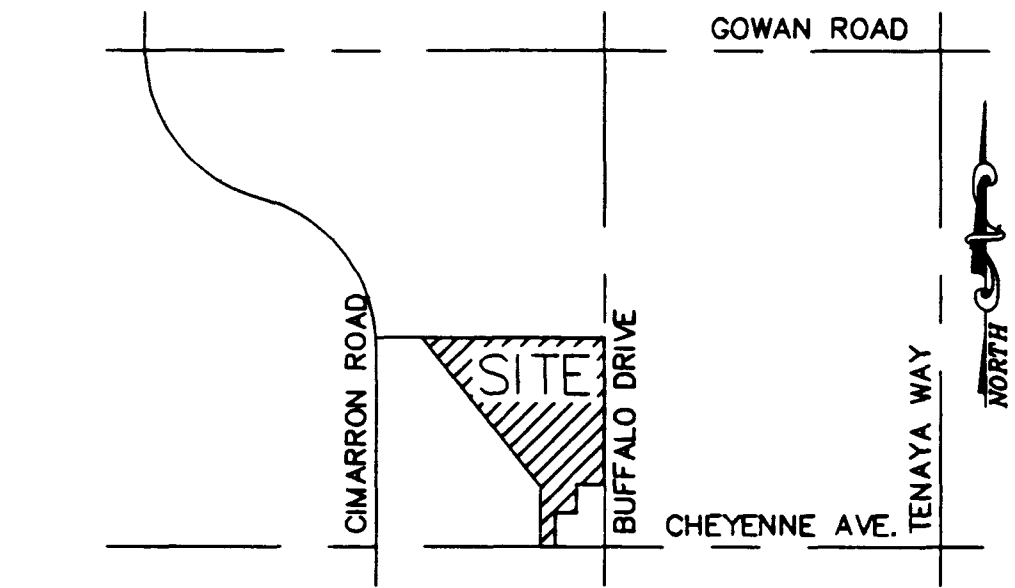
- NO WORK SHALL BEGIN UNTIL THE WATER PLANS HAVE BEEN RELEASED
FOR CONSTRUCTION BY LVVWD. FOLLOWING WATER PLAN APPROVAL, 48
HOUR NOTICE SHALL BE GIVEN TO THE LVVWD COMMUNICATION SUPPORT
CENTER (258-7171) PRIOR TO THE START OF CONSTRUCTION. NOTICE
MUST BE GIVEN BY 2:00 P.M. THE BUSINESS DAY PRIOR TO AN LVVWD
INSPECTION.
- ALL WORK SHALL CONFORM TO LVVWD STANDARD PLATES, DRAWINGS,
AND SPECIFICATIONS AND THE UNIFORM DESIGN AND CONSTRUCTION
STANDARDS FOR WATER DISTRIBUTION SYSTEMS (UDACS), LATEST EDITION.
- ALL WORK, EXCEPT AS MODIFIED BY THESE PLANS OR BY NOTE 2, SHALL
BE DONE IN ACCORDANCE WITH THE MOST CURRENT DRAFT OR EDITION
OF THE UNIFORM STANDARD SPECIFICATIONS FOR PUBLIC WORKS
CONSTRUCTION OFF-SITE IMPROVEMENT, CLARK COUNTY AREA.
- A SINGLE PIPE MATERIAL SHALL BE USED THROUGHOUT THE PROJECT
UNLESS OTHERWISE APPROVED BY THE LVVWD.
- ALL SERVICE LATERALS TWO (2) INCHES IN DIAMETER AND SMALLER
SHALL BE COPPER TUBING WITH LVVWD APPROVED SERVICE SADDLES.
- ALL WATER METER BOXES SHALL BE LOCATED OUTSIDE OF DRIVEWAY
AREAS.

**LAS VEGAS VALLEY WATER DISTRICT
STANDARD NOTES CONT.**

- ALL VALVES SHALL BE LOCATED OUTSIDE OF DRIVEWAYS, VALLEY AND
CURB GUTTERS.
- THE FOLLOWING REQUIREMENTS MUST BE MET IN THE EVENT OF A
WATERLINE AND SANITARY OR STORM SEWER LINE CROSS:
A. A MINIMUM EIGHTEEN (18) INCH VERTICAL SEPARATION (OUTSIDE TO
OUTSIDE) MUST BE MAINTAINED WHEN THE WATER LINE IS INSTALLED
OVER THE SANITARY OR STORM SEWER LINE. IF THE VERTICAL
SEPARATION CANNOT BE MAINTAINED OR THE WATER LINE MUST BE
PLACED UNDER THE SANITARY OR STORM SEWER LINE, THE SANITARY
OR STORM SEWER LINE MUST BE CONSTRUCTED WITH ONE OF THE
FOLLOWING OR AS SHOWN ON THESE PLANS:
A. POTABLE WATER SUPPLY QUALITY MATERIAL
B. ENCASUREMENT, WITH FOUR (4) INCH CONCRETE (MINIMUM)
C. SLEEVING WITH POTABLE WATER SUPPLY QUALITY PIPE
EACH PROVISION MUST EXTEND ALONG THE SANITARY OR STORM
SEWER, ON EITHER SIDE OF THE MAIN, A MINIMUM 10 FOOT DISTANCE
PERPENDICULAR TO THE WATER MAIN EXTERIOR.
- WARNING TAPE SHALL BE REQUIRED OVER ALL MAINS, ALL SIX (6)
DIAMETER AND LARGER SERVICE LATERALS, AND ANY SERVICE LATERAL
NOT INSTALLED PERPENDICULAR TO THE MAIN IN ACCORDANCE WITH
STANDARD PLATE NO. 27.
- ALL WATER FACILITIES SHALL BE FILLED, DISINFECTED, PRESSURE TESTED,
FLUSHED, FILLED AND AN ACCEPTABLE WATER SAMPLE OBTAINED, PRIOR
TO CONNECTION TO THE LVVWD'S DISTRIBUTION SYSTEM.
- THE CONTRACTOR MUST OBTAIN ALL METERS TWO (2) INCHES AND
SMALLER FROM THE LVVWD CENTRAL STORES. TELEPHONE 258-3152
FORTY-EIGHT (48) HOURS PRIOR TO PICKUP.
- CONSTRUCTION MAY INTERRUPT SERVICE, WITH LVVWD APPROVAL AND
PROPER NOTIFICATION, BETWEEN THE HOURS OF 10 P.M. AND 6 A.M.,
SUNDAY THROUGH THURSDAY. CIRCUMSTANCES MAY REQUIRE
TEMPORARY SERVICE FEES BE INSTALLED, WITHOUT LVVWD
REIMBURSEMENT. ANY TEMPORARY SERVICE FEED MUST HAVE PRIOR
LVVWD APPROVAL.
- ALL WATER FACILITY CONSTRUCTION MATERIALS USED MUST BE AS
LISTED ON THE LVVWD'S PRE-APPROVED MATERIALS AND MANUFACTURERS
LISTING FOR NEW FACILITIES. LATEST REVISION, OR
SPECIFICALLY APPROVED ON THESE PLANS.

**CITY OF LAS VEGAS FIRE
DEPARTMENT NOTES**

- ALL WORK SHALL BE DONE IN STRICT ACCORDANCE WITH THE CITY OF
LAS VEGAS FIRE DEPARTMENT "HYDRANT SPECIFICATIONS", "HYDRANT
INSTALLATION SPECIFICATIONS" AND ORDINANCE #3944.
- AUTHORIZED HYDRANTS FOR THIS PROJECT ARE:
A. KENNEDY GUARDIAN
B. MUELLER A-423 CENTURION
C. CLOW MODEL 544 MALLARD
- ON ANY NEW HOME OR BUILDING INSTALLATION, ACCESSIBLE FIRE
HYDRANTS SHALL BE INSTALLED BEFORE CONSTRUCTION COMMENCES AND SAID FIRE HYDRANTS SHALL BE IN GOOD WORKING
ORDER WITH AN ADEQUATE WATER SUPPLY.
- CONTRACTOR SHALL PLACE A BLUE REFLECTIVE MARKER AT CENTERLINE
OF STREET ADJACENT TO FIRE HYDRANT AS REQUIRED IN ORDINANCE
#3944 TO IDENTIFY FIRE HYDRANT LOCATIONS.
- CALL THE LAS VEGAS BUILDING DEPARTMENT AT 229-2071 FOR
UNDERGROUND INSPECTION, PRESSURE & FLUSH VERIFICATION OF ALL
FIRE HYDRANTS & FIRE LINES BEFORE COVERING.
- PAINTING OF THE CURBS AND HYDRANTS AND ANY WORK NECESSARY
FOR PROTECTION OF HYDRANTS FROM PHYSICAL DAMAGE PER
ORDINANCE #3944 SHALL BE COMPLETED BEFORE APPROVAL BY THE
CITY OF LAS VEGAS FIRE DEPARTMENT.
- A PERMIT IS REQUIRED FROM THE FIRE DEPARTMENT FOR ON-SITE
WATER LINE AND FIRE HYDRANT. THE PERMIT AND CONTRACTORS
MATERIALS AND TEST CERTIFICATE FOR UNDERGROUND PIPING FORM
SHALL BE OBTAINED FROM THE FIRE PROTECTION ENGINEER PRIOR TO
ANY WORK BEGINNING.
- PRIVATE FIRE HYDRANTS SHALL BE PAINTED RED.
- A FLOW TEST MUST BE WITNESSED BY THE FIRE DEPARTMENT PRIOR TO
OCCUPANCY FOR VERIFICATION OF REQUIRED ON-SITE WATER SUPPLY.
- ALL ON-SITE FIRE MAIN MATERIALS MUST BE U.L. LISTED AND A.W.W.A.
APPROVED.
- FIRE HYDRANT SPACING:
RESIDENTIAL - 500 FEET UNSPRINKLERED, 600 FEET SPRINKLERED;
COMMERCIAL, INCLUDING MULTI-FAMILY-300 FEET UNSPRINKLERED,
600 FEET SPRINKLERED.
- WHERE NEW WATER MAINS ARE EXTENDED ALONG STREETS, WHERE
HYDRANTS ARE NOT NEEDED FOR PROTECTION OF STRUCTURES, FIRE
HYDRANTS SHALL BE SPACED AT A MAXIMUM 1,000 FEET INTERVALS
TO PROVIDE FOR TRANSPORTATION HAZARDS.
- NO FIRE HYDRANT SHALL BE LOCATED WITHIN THE REQUIRED RADIUS OF
A CUL-DE-SAC OR WITHIN 20 FEET OF THE PERMETER OF THE RADIUS
OF THE CUL-DE-SAC.
- NO FIRE HYDRANT SHALL BE LOCATED WITHIN 8 FEET OF ANY CURB
RETURN, DRIVEWAY, POWER POLE, STREET LIGHT OR ANY OTHER
OBSTRUCTION.
- TWO SOURCES OF SUPPLY ARE REQUIRED WHERE THERE ARE 4
OR MORE FIRE HYDRANTS INSTALLED ON A SINGLE MAIN BREAK.
- FIRE APPARATUS ACCESS ROADS SHALL HAVE AN UNOBSTRUCTED WIDTH
OF NOT LESS THAN 20 FEET PROVIDED NO PARKING IS ALLOWED, NOT
LESS THAN 28 FEET IF PARALLEL PARKING IS ALLOWED ON ONE SIDE,
AND NOT LESS THAN 36 FEET IF PARALLEL PARKING IS ALLOWED ON BOTH
SIDES VERTICAL CLEARANCE SHALL BE NOT LESS THAN 13 FEET 6 INCHES.
- THE TURNING RADIUS FOR ANY FIRE APPARATUS ACCESS ROAD AND/OR
FIRE LANE, PUBLIC OR PRIVATE SHALL BE NOT LESS THAN 45 FEET
OUTSIDE RADIUS & 22 FEET INSIDE RADIUS.
- A FIRE APPARATUS ROAD SHALL BE REQUIRED WHEN ANY PORTION OF
AN EXTERIOR WALL OF THE FIRST STORY IS LOCATED MORE THAN 150
FEET FROM A FIRE DEPARTMENT VEHICLE ACCESS (SEE EXCEPTION IN
UFC 88, SECTION 10.207).
- ALL DEAD END FIRE APPARATUS ACCESS ROADS AND/OR FIRE LINES
PUBLIC OR PRIVATE IN EXCESS OF 150 FEET IN LENGTH SHALL BE
PROVIDED WITH AN APPROVED TURN AROUND AREA. SEE ORDINANCE
#3944.
- ACCESS ROADS SHALL BE MARKED BY PLACING APPROVED SIGNS AT THE
START OF THE DESIGNATED FIRE LANE, ONE SIGN AT THE END OF THE
FIRE LANE AND WITH SIGNS AT INTERVALS OF 100 FEET ALONG ALL
DESIGNATED FIRE LANES. SIGNS TO BE PLACED ON BOTH SIDES OF AN
ACCESS ROADWAY IF NEEDED TO PREVENT PARKING ON EITHER SIDE.
SIGNS TO BE INSTALLED NO HIGHER THAN 10 FEET OR LESS THAN 6 FEET
FROM ROADWAY LEVEL. THE CURBS ALONG OR ON THE PAVEMENT OR
CEMENT IF CURB IS NOT PRESENT SHALL BE PAINTED WITH RED WEATHER
RESISTANT PAINT IN ADDITION TO THE SIGNS.
- ELECTRICALLY CONTROLLED ACCESS GATES SHALL BE PROVIDED WITH
AN APPROVED EMERGENCY VEHICLE DETECTOR/RECEIVER SYSTEM. SAID
SYSTEM SHALL BE INSTALLED IN ACCORDANCE WITH THE CITY OF LAS
VEGAS GUIDELINES FOR AUTOMATIC EMERGENCY VEHICLE ACCESS GATES.



OWNER/DEVELOPER
CHEYENNE INVESTMENTS, LLC
8900 WESTCLOFF DRIVE, SUITE 505, B OF A BUILDING
LAS VEGAS, NEVADA 89128
PHONE (702) 477-7777
FAX (702) 856-2440

BENCHMARK
CLV BM# 0LV00184
RIVET & PLATE IN TOP OF CURB, ON CHEYENNE AVE. 1250' WEST OF SOFT
BREEZES DR. SOUTH CURB LINE.
ELEV. 2407.70' (733.8685m)(NAVD 88)

BASIS OF BEARING
SOUTH LINE SEC 9, TOWNSHIP 20 SOUTH, RANGE 60 EAST, M.D.M.
SAID BEARING BEING N 88°34' W, AS SHOWN ON "AMENDED PLAT OF
NORTH SHORE, PHASE 1", AS RECORDED IN BOOK 67, PAGE 88.

LEGAL DESCRIPTION
BEING A PORTION OF THE SOUTHEAST QUARTER (SE 1/4) OF THE SOUTHEAST
QUARTER (SE 1/4) OF SECTION 9, TOWNSHIP 20 SOUTH, RANGE 60 EAST,
M.D.M., IN THE CITY OF LAS VEGAS, CLARK COUNTY, NEVADA.

CITY OF LAS VEGAS SEWER NOTES

- ALL CONSTRUCTION AND MATERIALS SHALL BE IN ACCORDANCE WITH
THE LATEST EDITION OF THE DESIGN AND CONSTRUCTION STANDARDS
FOR WASTEWATER COLLECTION SYSTEMS AND THE UNIFORM STANDARD
SPECIFICATIONS FOR PUBLIC WORKS CONSTRUCTION OFF-SITE
IMPROVEMENTS, CLARK COUNTY AREA. THESE STANDARDS, IN ALL
CASES, THESE STANDARDS SHALL SUPERSEDE THE UNIFORM STANDARD
SPECIFICATIONS. IT WILL BE THE RESPONSIBILITY OF THE CONTRACTOR
TO BE AWARE OF THE CONTENTS OF THE ABOVE SPECIFICATION BOOKS.
- IT SHALL BE THE CONTRACTOR'S RESPONSIBILITY TO PERFORM
CONSTRUCTION AS PER PLANS. ANY ADDITIONS, DELETIONS, OR
CHANGES SHALL FIRST MEET WITH THE APPROVAL OF THE CONTROLLING
AGENCY.
- CHISEL "S" OR "G" IN CURBS WHERE SEWER OR GAS LATERALS PASS
UNDER THE CURB.
- POLYVINYL (PVC) SEWER PIPE SHALL MEET ASTM D-3034 SDR 35
SPECIFICATIONS, INSTALLED WITH SAND BEDDING AND BACK FILL OF TYPE II
GRAVEL.
- ALL MANHOLES IN PAVED STREETS 80' R/W AND LARGER, SHALL HAVE
CONCRETE COLLARS.
- TEE SADDLES SHALL BE USED TO CONNECT SEWER LATERALS TO
EXISTING MAIN LINES UP TO 12" DIA. SIZE. CONNECTIONS TO 15" OR
LARGER MAINS SHALL REQUIRE SPECIAL PROCEDURES.
- A SEWER MAIN CROSSING OVER A WATER MAIN OR LESS THAN 18"
UNDER A WATER MAIN, MUST BE REINFORCED CONCRETE ENCASED FOR
A DISTANCE NOT LESS THAN TEN FEET (10') TO EACH SIDE OF THE
CENTERLINE OF THE WATER MAIN.
- ALL CONTRACTORS INSTALLING SEWER MAINS THAT WILL BE UNDER THE
JURISDICTION OF THE CONTROLLING AGENCY MUST BE CLASS "A"
CONTRACTORS.
- THE CITY OF LAS VEGAS WILL NOT ACCEPT ANY SEWER MAINS WHICH
HAVE A VERTICAL DEFLECTION OF MORE THAN ONE TENTH (0.1) OF A
FOOT FROM THE APPROVED CONSTRUCTION PLANS. SEWER MAINS
FOUND TO EXCEED THIS TOLERANCE WILL HAVE TO BE REPAIRED OR
REMOVED AND REPLACED TO THE SATISFACTION OF THE CITY ENGINEER
PRIOR TO ACCEPTANCE BY THE CITY.

CITY OF LAS VEGAS STREET LIGHT NOTE

ALL STREET LIGHT INSTALLATIONS SHALL CONFORM TO THE LATEST ISSUE OF
THE STANDARD DETAIL AND SPECIFICATIONS OF THE CITY OF LAS VEGAS, AND
SHALL ALSO CONFORM TO THE UNIFORM STANDARD SPECIFICATIONS FOR PUBLIC
WORKS CONSTRUCTION OF OFF-SITE IMPROVEMENTS, CLARK COUNTY AREA,
LATEST EDITION, UNLESS OTHERWISE NOTED. ALL HAND HOLE COVERS MUST BE
INSTALLED, POLE CAPS POURED AND PULL BOX LIDS BOLTED DOWN PRIOR TO
ENERGIZING CIRCUIT. ALL WIRE MUST HAVE THW INSULATIONS.

APPROVALS

NEVADA POWER COMPANY
DATE 8/16/97
THIS APPROVAL IS ONLY FOR THE PLACEMENT AND CLEARANCE
OF STREET LIGHTS AND SIGNAL LIGHT INSTALLATIONS.
LAS VEGAS VALLEY WATER DISTRICT
DATE 6/23/97
CITY OF LAS VEGAS FIRE DEPARTMENT
DATE

Call before you dig. It's a Law.
1-800-227-2600
CALL 1-702-593-6111

REVISIONS:

Standage & Truitt Engineering, Ltd.
CIVIL ENGINEERING AND SURVEYING
6855 W. CHARLESTON BOULEVARD
LAS VEGAS, NEVADA 89117
PHONE: (702) 255-2950
FAX: (702) 255-3090

UTILITY PLAN
NORTHSHORE PROFESSIONAL
OFFICE PLAZA
CITY OF LAS VEGAS

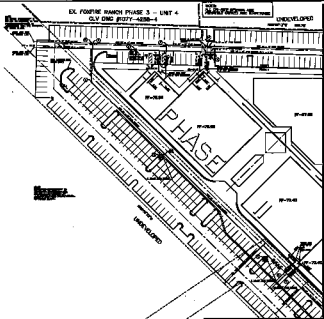
MICHAEL J. CREHAN
CIVIL ENGINEER
No. 10864
6/16/97

JOB NO.: 197LV008
FILE: 7121U05
DESIGNER: ANR
DRAWN BY: ANR
CHECKED BY: MJC
DATE: 4/29/97

SHEET NO.
6 OF 8

EX FOXFIRE RANCH PHASE 3 - UNIT 4
 C/LV DMC #1077-4288-4

UNDEVELOPED



SYMBOLS FOR UTILITIES

SYMBOLS FOR STRUCTURES

SYMBOL	DESCRIPTION
[Symbol]	1.0" DIA. WATER MAIN
[Symbol]	1.5" DIA. WATER MAIN
[Symbol]	2.0" DIA. WATER MAIN
[Symbol]	3.0" DIA. WATER MAIN
[Symbol]	4.0" DIA. WATER MAIN
[Symbol]	6.0" DIA. WATER MAIN
[Symbol]	8.0" DIA. WATER MAIN
[Symbol]	10" DIA. WATER MAIN
[Symbol]	12" DIA. WATER MAIN
[Symbol]	15" DIA. WATER MAIN
[Symbol]	18" DIA. WATER MAIN
[Symbol]	24" DIA. WATER MAIN
[Symbol]	30" DIA. WATER MAIN
[Symbol]	36" DIA. WATER MAIN
[Symbol]	42" DIA. WATER MAIN
[Symbol]	48" DIA. WATER MAIN
[Symbol]	54" DIA. WATER MAIN
[Symbol]	60" DIA. WATER MAIN
[Symbol]	72" DIA. WATER MAIN
[Symbol]	84" DIA. WATER MAIN
[Symbol]	96" DIA. WATER MAIN
[Symbol]	108" DIA. WATER MAIN
[Symbol]	120" DIA. WATER MAIN
[Symbol]	144" DIA. WATER MAIN
[Symbol]	168" DIA. WATER MAIN
[Symbol]	192" DIA. WATER MAIN
[Symbol]	216" DIA. WATER MAIN
[Symbol]	240" DIA. WATER MAIN
[Symbol]	288" DIA. WATER MAIN
[Symbol]	336" DIA. WATER MAIN
[Symbol]	384" DIA. WATER MAIN
[Symbol]	432" DIA. WATER MAIN
[Symbol]	480" DIA. WATER MAIN
[Symbol]	528" DIA. WATER MAIN
[Symbol]	576" DIA. WATER MAIN
[Symbol]	624" DIA. WATER MAIN
[Symbol]	672" DIA. WATER MAIN
[Symbol]	720" DIA. WATER MAIN
[Symbol]	768" DIA. WATER MAIN
[Symbol]	816" DIA. WATER MAIN
[Symbol]	864" DIA. WATER MAIN
[Symbol]	912" DIA. WATER MAIN
[Symbol]	960" DIA. WATER MAIN
[Symbol]	1008" DIA. WATER MAIN
[Symbol]	1056" DIA. WATER MAIN
[Symbol]	1104" DIA. WATER MAIN
[Symbol]	1152" DIA. WATER MAIN
[Symbol]	1200" DIA. WATER MAIN
[Symbol]	1248" DIA. WATER MAIN
[Symbol]	1296" DIA. WATER MAIN
[Symbol]	1344" DIA. WATER MAIN
[Symbol]	1392" DIA. WATER MAIN
[Symbol]	1440" DIA. WATER MAIN
[Symbol]	1488" DIA. WATER MAIN
[Symbol]	1536" DIA. WATER MAIN
[Symbol]	1584" DIA. WATER MAIN
[Symbol]	1632" DIA. WATER MAIN
[Symbol]	1680" DIA. WATER MAIN
[Symbol]	1728" DIA. WATER MAIN
[Symbol]	1776" DIA. WATER MAIN
[Symbol]	1824" DIA. WATER MAIN
[Symbol]	1872" DIA. WATER MAIN
[Symbol]	1920" DIA. WATER MAIN
[Symbol]	1968" DIA. WATER MAIN
[Symbol]	2016" DIA. WATER MAIN
[Symbol]	2064" DIA. WATER MAIN
[Symbol]	2112" DIA. WATER MAIN
[Symbol]	2160" DIA. WATER MAIN
[Symbol]	2208" DIA. WATER MAIN
[Symbol]	2256" DIA. WATER MAIN
[Symbol]	2304" DIA. WATER MAIN
[Symbol]	2352" DIA. WATER MAIN
[Symbol]	2400" DIA. WATER MAIN
[Symbol]	2448" DIA. WATER MAIN
[Symbol]	2496" DIA. WATER MAIN
[Symbol]	2544" DIA. WATER MAIN
[Symbol]	2592" DIA. WATER MAIN
[Symbol]	2640" DIA. WATER MAIN
[Symbol]	2688" DIA. WATER MAIN
[Symbol]	2736" DIA. WATER MAIN
[Symbol]	2784" DIA. WATER MAIN
[Symbol]	2832" DIA. WATER MAIN
[Symbol]	2880" DIA. WATER MAIN
[Symbol]	2928" DIA. WATER MAIN
[Symbol]	2976" DIA. WATER MAIN
[Symbol]	3024" DIA. WATER MAIN
[Symbol]	3072" DIA. WATER MAIN
[Symbol]	3120" DIA. WATER MAIN
[Symbol]	3168" DIA. WATER MAIN
[Symbol]	3216" DIA. WATER MAIN
[Symbol]	3264" DIA. WATER MAIN
[Symbol]	3312" DIA. WATER MAIN
[Symbol]	3360" DIA. WATER MAIN
[Symbol]	3408" DIA. WATER MAIN
[Symbol]	3456" DIA. WATER MAIN
[Symbol]	3504" DIA. WATER MAIN
[Symbol]	3552" DIA. WATER MAIN
[Symbol]	3600" DIA. WATER MAIN
[Symbol]	3648" DIA. WATER MAIN
[Symbol]	3696" DIA. WATER MAIN
[Symbol]	3744" DIA. WATER MAIN
[Symbol]	3792" DIA. WATER MAIN
[Symbol]	3840" DIA. WATER MAIN
[Symbol]	3888" DIA. WATER MAIN
[Symbol]	3936" DIA. WATER MAIN
[Symbol]	3984" DIA. WATER MAIN
[Symbol]	4032" DIA. WATER MAIN
[Symbol]	4080" DIA. WATER MAIN
[Symbol]	4128" DIA. WATER MAIN
[Symbol]	4176" DIA. WATER MAIN
[Symbol]	4224" DIA. WATER MAIN
[Symbol]	4272" DIA. WATER MAIN
[Symbol]	4320" DIA. WATER MAIN
[Symbol]	4368" DIA. WATER MAIN
[Symbol]	4416" DIA. WATER MAIN
[Symbol]	4464" DIA. WATER MAIN
[Symbol]	4512" DIA. WATER MAIN
[Symbol]	4560" DIA. WATER MAIN
[Symbol]	4608" DIA. WATER MAIN
[Symbol]	4656" DIA. WATER MAIN
[Symbol]	4704" DIA. WATER MAIN
[Symbol]	4752" DIA. WATER MAIN
[Symbol]	4800" DIA. WATER MAIN
[Symbol]	4848" DIA. WATER MAIN
[Symbol]	4896" DIA. WATER MAIN
[Symbol]	4944" DIA. WATER MAIN
[Symbol]	4992" DIA. WATER MAIN
[Symbol]	5040" DIA. WATER MAIN
[Symbol]	5088" DIA. WATER MAIN
[Symbol]	5136" DIA. WATER MAIN
[Symbol]	5184" DIA. WATER MAIN
[Symbol]	5232" DIA. WATER MAIN
[Symbol]	5280" DIA. WATER MAIN
[Symbol]	5328" DIA. WATER MAIN
[Symbol]	5376" DIA. WATER MAIN
[Symbol]	5424" DIA. WATER MAIN
[Symbol]	5472" DIA. WATER MAIN
[Symbol]	5520" DIA. WATER MAIN
[Symbol]	5568" DIA. WATER MAIN
[Symbol]	5616" DIA. WATER MAIN
[Symbol]	5664" DIA. WATER MAIN
[Symbol]	5712" DIA. WATER MAIN
[Symbol]	5760" DIA. WATER MAIN
[Symbol]	5808" DIA. WATER MAIN
[Symbol]	5856" DIA. WATER MAIN
[Symbol]	5904" DIA. WATER MAIN
[Symbol]	5952" DIA. WATER MAIN
[Symbol]	6000" DIA. WATER MAIN
[Symbol]	6048" DIA. WATER MAIN
[Symbol]	6096" DIA. WATER MAIN
[Symbol]	6144" DIA. WATER MAIN
[Symbol]	6192" DIA. WATER MAIN
[Symbol]	6240" DIA. WATER MAIN
[Symbol]	6288" DIA. WATER MAIN
[Symbol]	6336" DIA. WATER MAIN
[Symbol]	6384" DIA. WATER MAIN
[Symbol]	6432" DIA. WATER MAIN
[Symbol]	6480" DIA. WATER MAIN
[Symbol]	6528" DIA. WATER MAIN
[Symbol]	6576" DIA. WATER MAIN
[Symbol]	6624" DIA. WATER MAIN
[Symbol]	6672" DIA. WATER MAIN
[Symbol]	6720" DIA. WATER MAIN
[Symbol]	6768" DIA. WATER MAIN
[Symbol]	6816" DIA. WATER MAIN
[Symbol]	6864" DIA. WATER MAIN
[Symbol]	6912" DIA. WATER MAIN
[Symbol]	6960" DIA. WATER MAIN
[Symbol]	7008" DIA. WATER MAIN
[Symbol]	7056" DIA. WATER MAIN
[Symbol]	7104" DIA. WATER MAIN
[Symbol]	7152" DIA. WATER MAIN
[Symbol]	7200" DIA. WATER MAIN
[Symbol]	7248" DIA. WATER MAIN
[Symbol]	7296" DIA. WATER MAIN
[Symbol]	7344" DIA. WATER MAIN
[Symbol]	7392" DIA. WATER MAIN
[Symbol]	7440" DIA. WATER MAIN
[Symbol]	7488" DIA. WATER MAIN
[Symbol]	7536" DIA. WATER MAIN
[Symbol]	7584" DIA. WATER MAIN
[Symbol]	7632" DIA. WATER MAIN
[Symbol]	7680" DIA. WATER MAIN
[Symbol]	7728" DIA. WATER MAIN
[Symbol]	7776" DIA. WATER MAIN
[Symbol]	7824" DIA. WATER MAIN
[Symbol]	7872" DIA. WATER MAIN
[Symbol]	7920" DIA. WATER MAIN
[Symbol]	7968" DIA. WATER MAIN
[Symbol]	8016" DIA. WATER MAIN
[Symbol]	8064" DIA. WATER MAIN
[Symbol]	8112" DIA. WATER MAIN
[Symbol]	8160" DIA. WATER MAIN
[Symbol]	8208" DIA. WATER MAIN
[Symbol]	8256" DIA. WATER MAIN
[Symbol]	8304" DIA. WATER MAIN
[Symbol]	8352" DIA. WATER MAIN
[Symbol]	8400" DIA. WATER MAIN
[Symbol]	8448" DIA. WATER MAIN
[Symbol]	8496" DIA. WATER MAIN
[Symbol]	8544" DIA. WATER MAIN
[Symbol]	8592" DIA. WATER MAIN
[Symbol]	8640" DIA. WATER MAIN
[Symbol]	8688" DIA. WATER MAIN
[Symbol]	8736" DIA. WATER MAIN
[Symbol]	8784" DIA. WATER MAIN
[Symbol]	8832" DIA. WATER MAIN
[Symbol]	8880" DIA. WATER MAIN
[Symbol]	8928" DIA. WATER MAIN
[Symbol]	8976" DIA. WATER MAIN
[Symbol]	9024" DIA. WATER MAIN
[Symbol]	9072" DIA. WATER MAIN
[Symbol]	9120" DIA. WATER MAIN
[Symbol]	9168" DIA. WATER MAIN
[Symbol]	9216" DIA. WATER MAIN
[Symbol]	9264" DIA. WATER MAIN
[Symbol]	9312" DIA. WATER MAIN
[Symbol]	9360" DIA. WATER MAIN
[Symbol]	9408" DIA. WATER MAIN
[Symbol]	9456" DIA. WATER MAIN
[Symbol]	9504" DIA. WATER MAIN
[Symbol]	9552" DIA. WATER MAIN
[Symbol]	9600" DIA. WATER MAIN
[Symbol]	9648" DIA. WATER MAIN
[Symbol]	9696" DIA. WATER MAIN
[Symbol]	9744" DIA. WATER MAIN
[Symbol]	9792" DIA. WATER MAIN
[Symbol]	9840" DIA. WATER MAIN
[Symbol]	9888" DIA. WATER MAIN
[Symbol]	9936" DIA. WATER MAIN
[Symbol]	9984" DIA. WATER MAIN
[Symbol]	10032" DIA. WATER MAIN
[Symbol]	10080" DIA. WATER MAIN
[Symbol]	10128" DIA. WATER MAIN
[Symbol]	10176" DIA. WATER MAIN
[Symbol]	10224" DIA. WATER MAIN
[Symbol]	10272" DIA. WATER MAIN
[Symbol]	10320" DIA. WATER MAIN
[Symbol]	10368" DIA. WATER MAIN
[Symbol]	10416" DIA. WATER MAIN
[Symbol]	10464" DIA. WATER MAIN
[Symbol]	10512" DIA. WATER MAIN
[Symbol]	10560" DIA. WATER MAIN
[Symbol]	10608" DIA. WATER MAIN
[Symbol]	10656" DIA. WATER MAIN
[Symbol]	10704" DIA. WATER MAIN
[Symbol]	10752" DIA. WATER MAIN
[Symbol]	10800" DIA. WATER MAIN
[Symbol]	10848" DIA. WATER MAIN
[Symbol]	10896" DIA. WATER MAIN
[Symbol]	10944" DIA. WATER MAIN
[Symbol]	10992" DIA. WATER MAIN
[Symbol]	11040" DIA. WATER MAIN
[Symbol]	11088" DIA. WATER MAIN
[Symbol]	11136" DIA. WATER MAIN
[Symbol]	11184" DIA. WATER MAIN
[Symbol]	11232" DIA. WATER MAIN
[Symbol]	11280" DIA. WATER MAIN
[Symbol]	11328" DIA. WATER MAIN
[Symbol]	11376" DIA. WATER MAIN
[Symbol]	11424" DIA. WATER MAIN
[Symbol]	11472" DIA. WATER MAIN
[Symbol]	11520" DIA. WATER MAIN
[Symbol]	11568" DIA. WATER MAIN
[Symbol]	11616" DIA. WATER MAIN
[Symbol]	11664" DIA. WATER MAIN
[Symbol]	11712" DIA. WATER MAIN
[Symbol]	11760" DIA. WATER MAIN
[Symbol]	11808" DIA. WATER MAIN
[Symbol]	11856" DIA. WATER MAIN
[Symbol]	11904" DIA. WATER MAIN
[Symbol]	11952" DIA. WATER MAIN
[Symbol]	12000" DIA. WATER MAIN

MATCH LINE SHEET 7

UNDEVELOPED

PHASE 3

PH-10-10

PH-10-11

PH-10-12

MATCH LINE SHEET 5

MATCH LINE SHEET 7



UNDEVELOPED

PHASE 3

PH-10-10

PH-10-11

PH-10-12

UNDEVELOPED

PHASE 3

PH-10-10

PH-10-11

PH-10-12



Stevenson & Smith Engineering, Ltd.
 1100 WEST 10TH AVENUE
 SUITE 100
 DENVER, COLORADO 80202
 PHONE: 303-733-1111
 FAX: 303-733-1112

UTILITY PLAN
 NORTHMOORE PROFESSIONAL
 OFFICES PLAZA



DATE: 11/11/03
 SCALE: AS SHOWN
 SHEET NO. 1 OF 6