

**C.L.V. VEGAS SEWER NOTES**  
SEE COVER SHEET

**C.L.V. VEGAS FIRE NOTES**  
SEE COVER SHEET

**APPROVALS:**

*Agne Malhotra* 5-31-96 DATE  
CITY OF LAS VEGAS FIRE MARSHAL

*James L. Johnson* 6/3/96 DATE  
LAS VEGAS VALLEY WATER DISTRICT

NEVADA POWER COMPANY  
THIS APPROVAL IS ONLY FOR THE PLACEMENT AND CLEARANCE OF STREET LIGHT AND SIGNAL LIGHT INSTALLATIONS.

**WATER QUANTITIES (PRIVATE)**

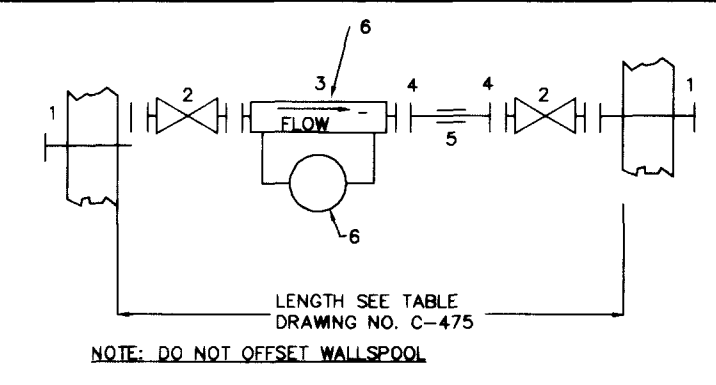
2 1/2" WATER 661 L.F.  
8" WATER 2690 L.F.  
8" GATE VALVE 2 EA.  
8" 11.25' 4 EA.  
8" 22.5' 3 EA.  
8" 45' 5 EA.  
8" 90' 7 EA.  
STANDARD F.H. ASSEMBLY 7 EA.  
6"x2" METER W/6" DCVA 2 EA.

**SEWER QUANTITIES (PRIVATE)**

6" SEWER 1167 L.F.  
8" SEWER 1993 L.F.  
6" CLEANOUT 10 L.F.  
48" MANHOLE 11 EA.

NOTE: ALL ONSITE SEWERS ARE PRIVATELY OWNED AND MAINTAINED

**L.V.V.W.D. NOTES:**



- STEEL PIPE CASING SHALL BE FABRICATED FROM A MINIMUM OF 1/4" THICK STEEL PLATES, CONFORMING TO THE REQUIREMENTS OF ASTM A283, GRADE B, C, OR D. ALL JOINTS SHALL BE WELDED. INTERIOR JOINTS SHALL BE ROUNDED TO A SMOOTH FINISH. ALL WELDING SHALL BE PERFORMED IN ACCORDANCE WITH ANVWA C201. ANVWA STANDARD FOR FABRICATED ELECTRICALLY WELDED STEEL WATER PIPE. COATINGS FOR STEEL CASING ARE NOT REQUIRED.
- PIPE CASING SHALL BE LAID TRUE TO LINE AND GRADE WITH NO BENDS OR CHANGES IN GRADE FOR THE FULL LENGTH OF THE CASING.
- THE PIPE SHALL BE SUPPORTED AT EACH END OF EACH JOINT WITH SPACERS. AFTER INSTALLATION OF THE PIPE, THE CASING SHALL BE SEALED AT BOTH ENDS WITH CASING END SEALS.

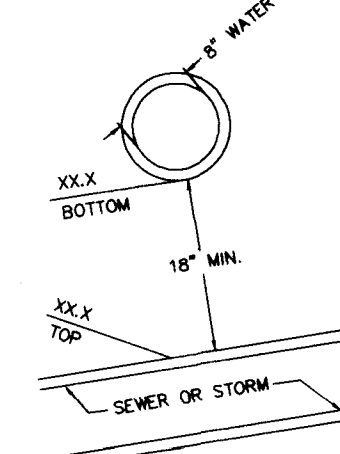
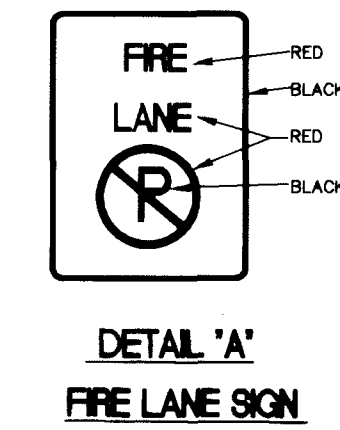
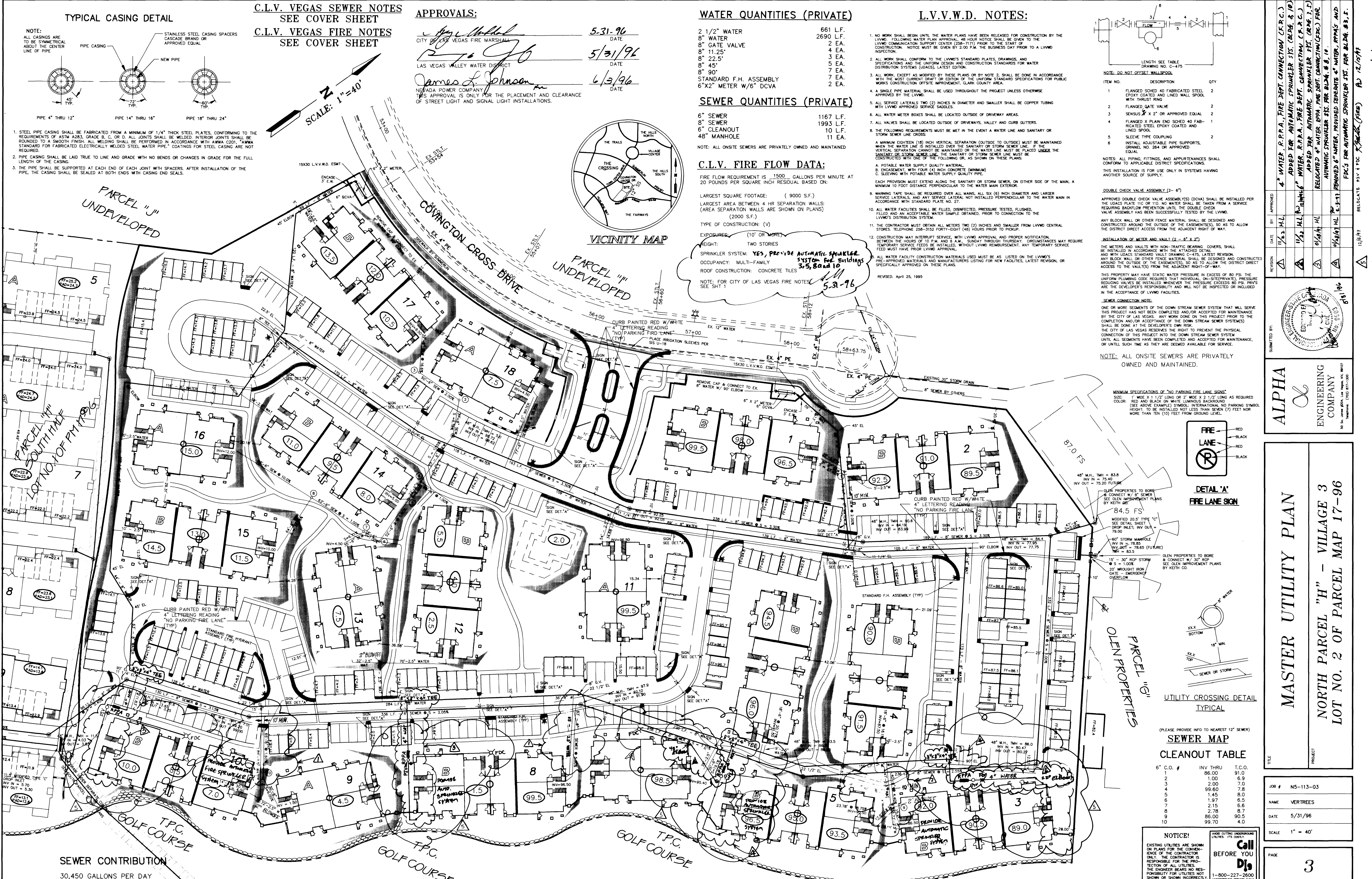
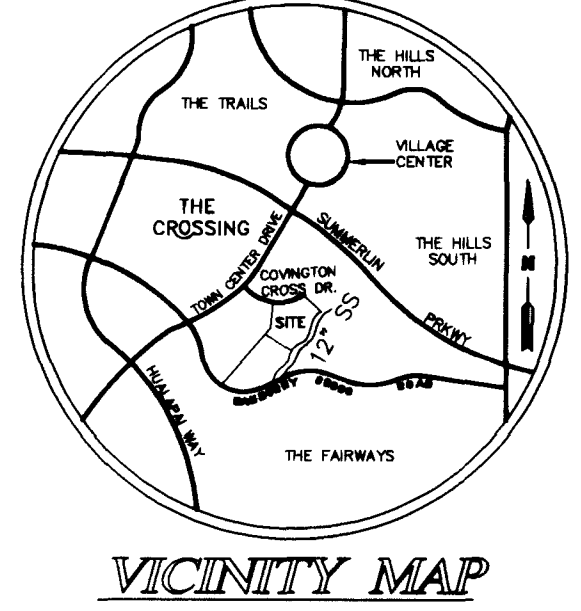
**C.L.V. FIRE FLOW DATA:**

FIRE FLOW REQUIREMENT IS 1500 GALLONS PER MINUTE AT 20 POUNDS PER SQUARE INCH RESIDUAL BASED ON:

LARGEST SQUARE FOOTAGE: ( 9000 S.F.)  
LARGEST AREA BETWEEN 4 HR SEPARATION WALLS: (AREA SEPARATION WALLS ARE SHOWN ON PLANS) (2000 S.F.)  
TYPE OF CONSTRUCTION: (V)  
EXPOSURES: (10' OR MORE)  
HEIGHT: (TWO STORIES)  
SPRINKLER SYSTEM: YES, PROVIDE AUTOMATIC SPRINKLER SYSTEM FOR BUILDINGS 3, 5, AND 10  
OCCUPANCY: MULTI-FAMILY  
ROOF CONSTRUCTION: CONCRETE TILES

NOTE: FOR CITY OF LAS VEGAS FIRE NOTES 5-31-96 SEE SHT 1

REVISED: April 25, 1995



**CLEANOUT TABLE**

6" C.O. #	INV THRU	T.C.O.
1	86.00	91.0
2	1.00	6.9
3	2.00	7.0
4	99.60	7.8
5	1.45	8.0
6	1.97	6.5
7	2.15	6.6
8	2.78	8.7
9	86.00	90.5
10	99.70	4.0

**NOTICE!**

EXISTING UTILITIES ARE SHOWN ON PLANS FOR THE CONVICTION OF THE CONTRACTOR ONLY. THE CONTRACTOR IS RESPONSIBLE FOR THE PROTECTION OF ALL UTILITIES. THE ENGINEER BEARS NO RESPONSIBILITY FOR UTILITIES NOT SHOWN OR SHOWN INCORRECTLY.

Call BEFORE YOU Dig  
1-800-227-2600  
UNDERGROUND UTILITY SERVICE (USA)

**ALPHA & ENGINEERING COMPANY**

REGISTERED PROFESSIONAL ENGINEER  
NO. 10,000  
STATE OF NEVADA  
EXPIRES 12/31/00

PROJECT: 307Y-4479-N

DATE: 5/31/96

SCALE: 1" = 40'

PAGE: 3

11303.UT.DWG OF 4

**MASTER UTILITY PLAN**

**NORTH PARCEL "H" - VILLAGE 3**

**LOT NO. 2 OF PARCEL MAP 17-96**

JOB # NS-113-03

NAME: VERTREES

DATE: 5/31/96

SCALE: 1" = 40'

PAGE: 3

11303.UT.DWG OF 4

TYPICAL GROUND SETS



C.L.S. FROM CENTER OF THE COVER TO THE CENTER OF THE COVER

C.L.S. FROM THE CENTER OF THE COVER TO THE CENTER OF THE COVER

ASBESTOS

*[Handwritten signatures and notes]*  
 A.S. 3  
 Staff  
 4/1/68

WATER DIMENSIONS (PRIVATE)

WATER DIMENSIONS (PRIVATE)  
 WATER DIMENSIONS (PRIVATE)  
 WATER DIMENSIONS (PRIVATE)

WATER DIMENSIONS (PUBLIC)

WATER DIMENSIONS (PUBLIC)  
 WATER DIMENSIONS (PUBLIC)  
 WATER DIMENSIONS (PUBLIC)

WATER DIMENSIONS (MIXED)

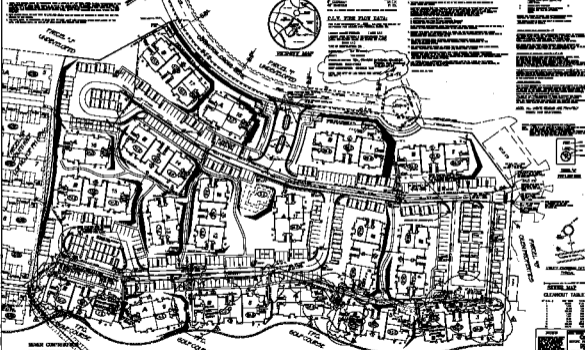
WATER DIMENSIONS (MIXED)  
 WATER DIMENSIONS (MIXED)  
 WATER DIMENSIONS (MIXED)

L.V.D. NOTES:

- 1. ALL DIMENSIONS ARE TO CENTER UNLESS OTHERWISE NOTED.
- 2. ALL DIMENSIONS ARE TO CENTER UNLESS OTHERWISE NOTED.
- 3. ALL DIMENSIONS ARE TO CENTER UNLESS OTHERWISE NOTED.
- 4. ALL DIMENSIONS ARE TO CENTER UNLESS OTHERWISE NOTED.
- 5. ALL DIMENSIONS ARE TO CENTER UNLESS OTHERWISE NOTED.
- 6. ALL DIMENSIONS ARE TO CENTER UNLESS OTHERWISE NOTED.
- 7. ALL DIMENSIONS ARE TO CENTER UNLESS OTHERWISE NOTED.
- 8. ALL DIMENSIONS ARE TO CENTER UNLESS OTHERWISE NOTED.
- 9. ALL DIMENSIONS ARE TO CENTER UNLESS OTHERWISE NOTED.
- 10. ALL DIMENSIONS ARE TO CENTER UNLESS OTHERWISE NOTED.



NORTH MAP



ALPHA  
 [Logo]  
 [Text]

MASTER UTILITY PLAN  
 NORTH PARCEL "B" - VILLAGE 2  
 LOT NO. 2 OF PARCEL MAP 17-00