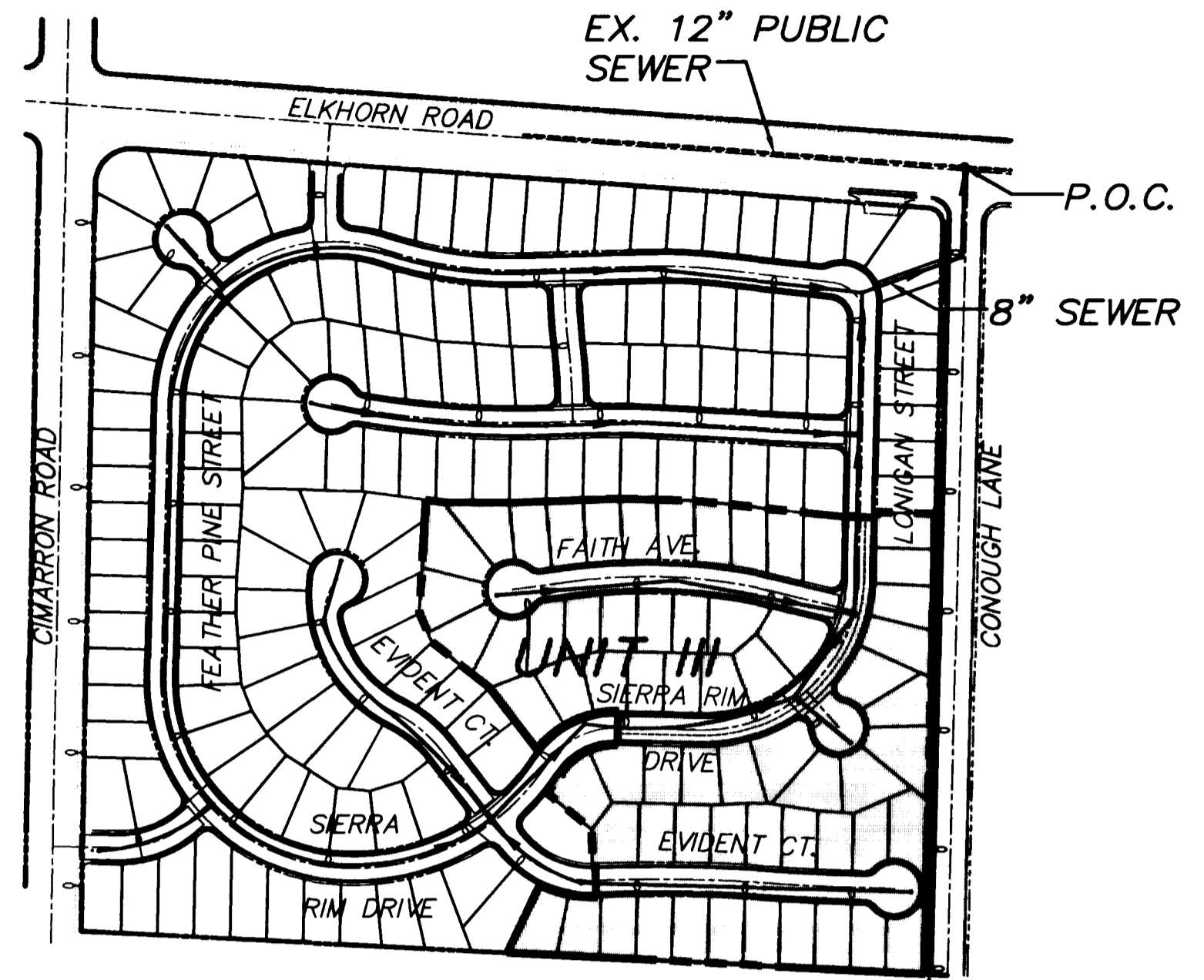
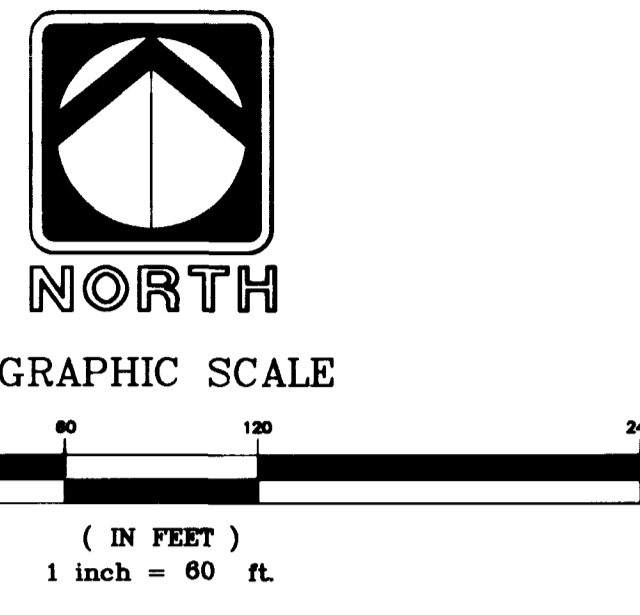
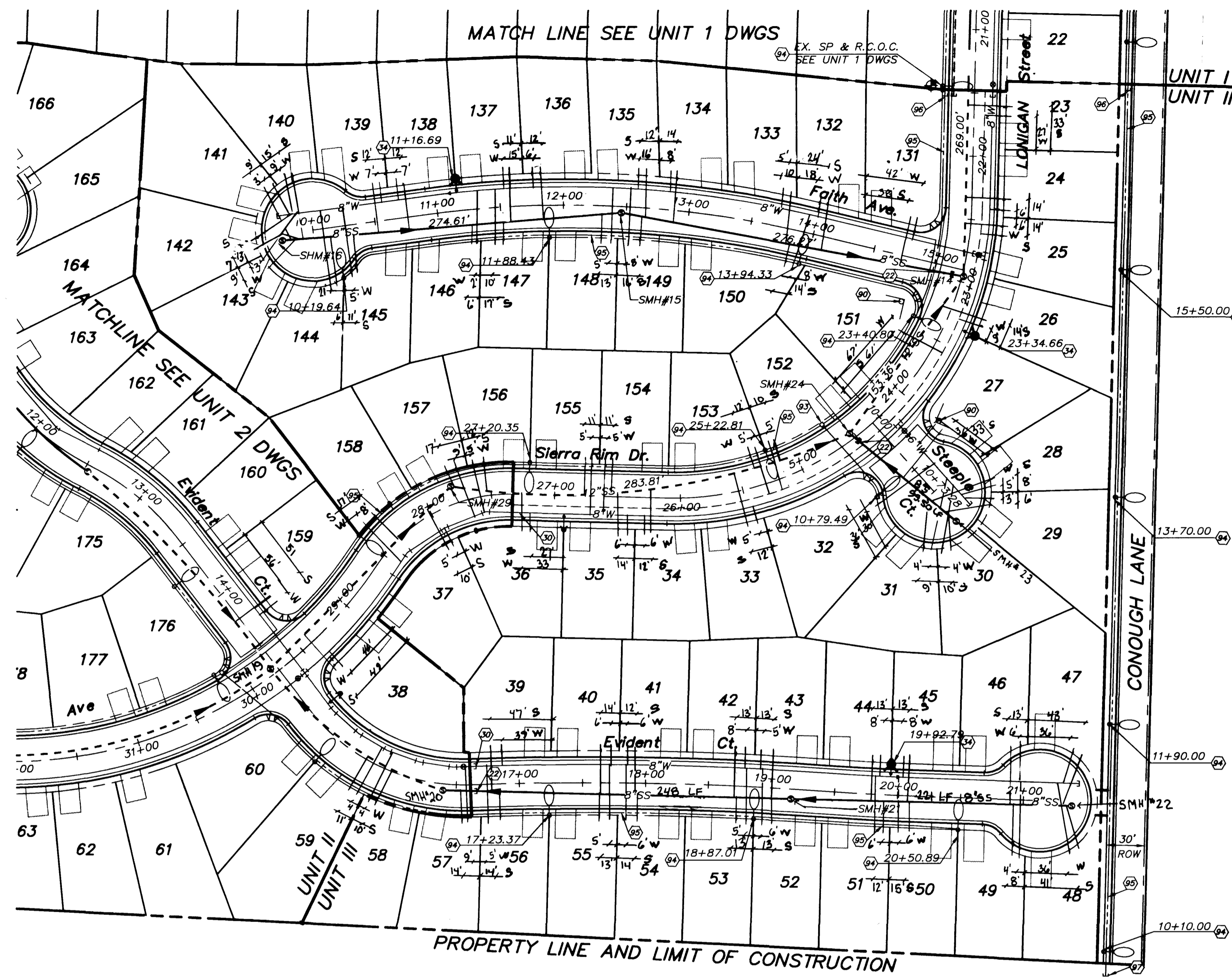


D:\CADD\50655\65SPH3-11.dwg, Oct 25 08:30:25, 1996. D:\cadd\50655\1\cadd\standards\cadd\dc-48605008  
 HP DesignJet 650C C:\MACAD\2\DRW\HPBL2\STANDARD.CFG 1.1 HP-GL/2 ADI 4.2 Ver 1.3 by Hewlett-Packard



SEWER OUTFALL MAP  
NTS

**SEWER CONNECTION NOTE**

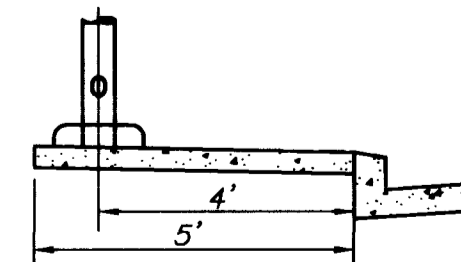
ONE OR MORE SEGMENTS OF THE DOWNSTREAM SEWER SYSTEM THAT WILL SERVE THIS PROJECT HAS NOT BEEN COMPLETED AND/OR ACCEPTED FOR MAINTENANCE BY THE CITY OF LAS VEGAS. ANY WORK DONE ON THIS PROJECT PRIOR TO THE COMPLETION AND/OR ACCEPTANCE OF THE DOWNSTREAM SEWER SYSTEM(S) SHALL BE DONE AT THE DEVELOPER'S OWN RISK. THE CITY OF LAS VEGAS RESERVES THE RIGHT TO PREVENT THE PHYSICAL CONNECTION OF THIS PROJECT INTO THE DOWNSTREAM SEWER SYSTEM UNTIL ALL SEGMENTS HAVE BEEN COMPLETED AND ACCEPTED FOR MAINTENANCE, OR UNTIL SUCH TIME AS THEY ARE DEEMED AVAILABLE FOR SERVICE.

**CONSTRUCTION NOTES:**

- 22 REMOVE CAP AND CONNECT TO EXISTING (SEWER)
- 30 CLOSE VALVE, REMOVE CAP AND CONNECT TO EX. WATER
- 92 STOP SIGN
- 93 NO. 3-1/2 PULL BOX
- 94 100W HPS STREET LIGHT
- 95 1-1/4" STREET LIGHT CONDUIT
- 96 REMOVE CAP AND CONNECT TO EXIST. 1-1/4" CONDUIT
- 97 STUB AND CAP 1-1/4" CONDUIT

**STREET LIGHT NOTE**

1. ALL HAND HOLE COVERS MUST BE INSTALLED, POLECAPS POURED, AND PULL BOX LIDS BOLTED DOWN PRIOR TO ENERGIZING CIRCUIT. ALL WIRE MUST HAVE THW INSULATION.



STREET LIGHT LOCATION  
(PER C.L.V. STD. DWG. #318)

**SANITARY SEWER FLOW**

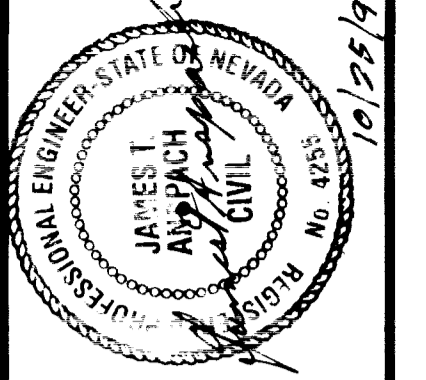
AVERAGE DAILY FLOW 20,700 GPD  
PEAK FLOW 62,100 GPD

**BENCH MARK**

BM NO. 1LV9020NES: ALUMINUM TAG AT THE CENTERLINE INTERSECTION OF ELKHORN ROAD AND DURANGO DRIVE. ELEVATION = 2530.80(NAD83) = (NVD 29)+2.40' ELEVATION = 2528.49 USED AS PROJECT BENCHMARK

**BASIS OF BEARINGS**

WEST LINE OF THE SOUTHWEST QUARTER OF SECTION 16, TOWNSHIP 19 SOUTH, RANGE 60 EAST M.D.M. BEING N 00°20'00" E, AS SHOWN BY MAP THEREOF ON FILE, IN FILE 53, PAGE 40 OF SURVEYS IN THE CLARK COUNTY RECORDERS OFFICE.



REV.	DATE	DESCRIPTION	APPROVAL
1	5-11-97	ADDED SEWER MAINS ASSUMES	

- PLANNING
- CIVIL ENGINEERING
- ENVIRONMENTAL SERVICES
- LAND SURVEYING
- DEVELOPER SERVICES
- PUBLIC WORKS
- WATER RESOURCES



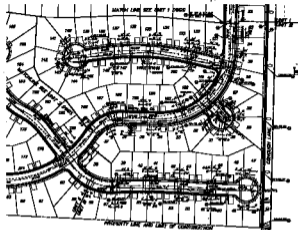
**DUNMORE HOMES INC.**  
**MountainAire at ELKHORN SPRINGS**  
 UNIT II  
 MASTER UTILITY AND TRAFFIC PLAN

SHEET NO.:  
**7**  
 7 OF 10 SHEETS

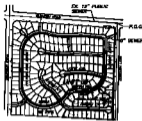
RECORD DRAWING

"As Built" 307Y-4443-3

October 25, 1996 8:26:21 a.m. Drawing: C:\DW\50655\65SPH3-11.DWG (A1) Xref: 65585E.DWG



NORTH  
GRADED ROAD  
1:20' V.L.



GENERAL OFFFALL MAP

**GENERAL NOTES**  
 1. SEE SPECIAL SPECIFICATIONS FOR ALL WORK.  
 2. ALL WORK SHALL BE IN ACCORDANCE WITH THE LATEST EDITIONS OF THE STANDARD SPECIFICATIONS FOR HIGHWAY CONSTRUCTION, AS PUBLISHED BY THE NATIONAL ASSOCIATION OF STATE HIGHWAY ENGINEERS.  
 3. ALL WORK SHALL BE IN ACCORDANCE WITH THE LATEST EDITIONS OF THE STANDARD SPECIFICATIONS FOR HIGHWAY BRIDGE CONSTRUCTION, AS PUBLISHED BY THE NATIONAL ASSOCIATION OF STATE HIGHWAY ENGINEERS.

**GENERAL NOTES**  
 1. SEE SPECIAL SPECIFICATIONS FOR ALL WORK.  
 2. ALL WORK SHALL BE IN ACCORDANCE WITH THE LATEST EDITIONS OF THE STANDARD SPECIFICATIONS FOR HIGHWAY CONSTRUCTION, AS PUBLISHED BY THE NATIONAL ASSOCIATION OF STATE HIGHWAY ENGINEERS.  
 3. ALL WORK SHALL BE IN ACCORDANCE WITH THE LATEST EDITIONS OF THE STANDARD SPECIFICATIONS FOR HIGHWAY BRIDGE CONSTRUCTION, AS PUBLISHED BY THE NATIONAL ASSOCIATION OF STATE HIGHWAY ENGINEERS.

**GENERAL NOTES**  
 1. SEE SPECIAL SPECIFICATIONS FOR ALL WORK.  
 2. ALL WORK SHALL BE IN ACCORDANCE WITH THE LATEST EDITIONS OF THE STANDARD SPECIFICATIONS FOR HIGHWAY CONSTRUCTION, AS PUBLISHED BY THE NATIONAL ASSOCIATION OF STATE HIGHWAY ENGINEERS.  
 3. ALL WORK SHALL BE IN ACCORDANCE WITH THE LATEST EDITIONS OF THE STANDARD SPECIFICATIONS FOR HIGHWAY BRIDGE CONSTRUCTION, AS PUBLISHED BY THE NATIONAL ASSOCIATION OF STATE HIGHWAY ENGINEERS.

**STREET LIGHT NOTES**  
 1. SEE SPECIAL SPECIFICATIONS FOR ALL WORK.  
 2. ALL WORK SHALL BE IN ACCORDANCE WITH THE LATEST EDITIONS OF THE STANDARD SPECIFICATIONS FOR HIGHWAY CONSTRUCTION, AS PUBLISHED BY THE NATIONAL ASSOCIATION OF STATE HIGHWAY ENGINEERS.



STREET LIGHT LOCATION  
 SEE SPECIAL SPECIFICATIONS

**GENERAL NOTES**  
 1. SEE SPECIAL SPECIFICATIONS FOR ALL WORK.  
 2. ALL WORK SHALL BE IN ACCORDANCE WITH THE LATEST EDITIONS OF THE STANDARD SPECIFICATIONS FOR HIGHWAY CONSTRUCTION, AS PUBLISHED BY THE NATIONAL ASSOCIATION OF STATE HIGHWAY ENGINEERS.

RECORD DRAWING



THESE KEITH COMPANIES, NEVADA

7

ALL RIGHTS RESERVED BY THE ENGINEER. NO PART OF THIS DRAWING IS TO BE REPRODUCED OR TRANSMITTED IN ANY FORM OR BY ANY MEANS, ELECTRONIC OR MECHANICAL, INCLUDING PHOTOCOPYING, RECORDING, OR BY ANY INFORMATION STORAGE AND RETRIEVAL SYSTEM, WITHOUT THE WRITTEN PERMISSION OF THE ENGINEER.