

**SEWER CONNECTION NOTE:**

ONE OR MORE SEGMENTS OF THE DOWNSTREAM SEWER SYSTEM THAT WILL SERVE THIS PROJECT HAS NOT BEEN COMPLETED AND/OR ACCEPTED FOR MAINTENANCE BY THE CITY OF LAS VEGAS. ANY WORK DONE ON THIS PROJECT PRIOR TO THE COMPLETION AND/OR ACCEPTANCE OF THE DOWNSTREAM SEWER SYSTEM(S) SHALL BE DONE AT THE DEVELOPER'S OWN RISK. THE CITY OF LAS VEGAS RESERVES THE RIGHT TO PREVENT THE PHYSICAL CONNECTION OF THIS PROJECT INTO THE DOWNSTREAM SEWER SYSTEM UNTIL ALL SEGMENTS HAVE BEEN COMPLETED AND ACCEPTED FOR MAINTENANCE, OR UNTIL SUCH TIME AS THEY ARE DEEMED AVAILABLE FOR SERVICE.

**CONSTRUCTION NOTES:**

- 34 FIRE HYDRANT ASSEMBLY PER STANDARD DWG. NO. 516
- 90 STREET NAME SIGN
- 92 STOP SIGN
- 93 3-1/2" PULL BOX
- 94 100W HPS STREET LIGHT
- 95 1-1/4" STREET LIGHT CONDUIT
- 96 REMOVE CAP AND CONNECT TO EXIST. 1-1/4" CONDUIT
- 97 STUB AND CAP 1-1/4" CONDUIT
- 98 INSTALL R2-1 (25 MPH)

**GENERAL NOTES:**

- 1. 22-1/2" ELL W/ THRUST BLOCK

**BENCH MARK**

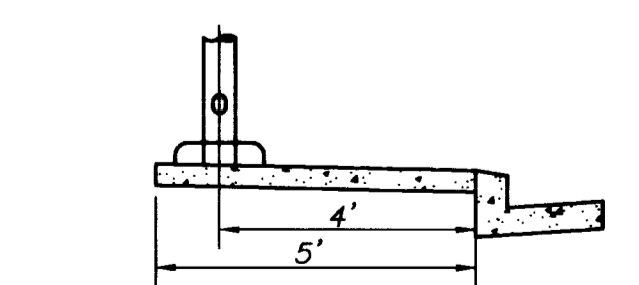
BM NO. 1LV9020NES: ALUMINUM TAG AT THE CENTERLINE INTERSECTION OF ELKHORN ROAD AND DURANGO DRIVE. ELEVATION = 2528.49 (NVD 29)  
ELEVATION = 2530.89 (NAVD 88) = (NVD 29) + 2.40'  
ELEVATION 2528.49 USED AS PROJECT BENCH MARK

**BASIS OF BEARINGS**

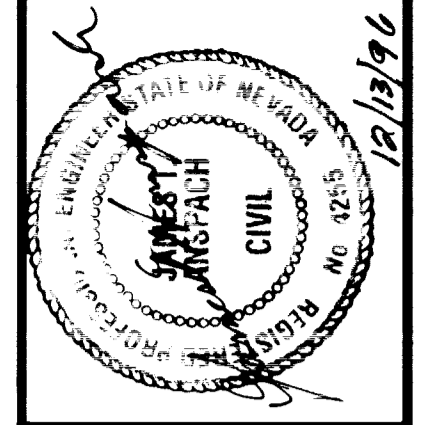
WEST LINE OF THE SOUTHWEST QUARTER OF SECTION 16, TOWNSHIP 19 SOUTH, RANGE 60 EAST M.D.M. BEING N 00°20'00" E, AS SHOWN BY MAP THEREOF ON FILE, IN FILE 53, PAGE 40 OF SURVEYS IN THE CLARK COUNTY RECORDERS OFFICE.

**STREET LIGHT NOTE**

- 1. ALL HAND HOLE COVERS MUST BE INSTALLED, POLECAPS POURED, AND PULL BOX LIDS BOLTED DOWN PRIOR TO ENERGIZING CIRCUIT. ALL WIRE MUST HAVE THW INSULATION.



**SANITARY SEWER FLOW**  
AVERAGE DAILY FLOW 14,500 GPD  
PEAK FLOW 43,500 GPD



REV.	DATE	DESCRIPTION	DATE	APPROVAL
1	12/13/92	RELOCATE F.M. TO S. SIDE OF STREET		

- PLANNING
- CIVIL ENGINEERING
- ENVIRONMENTAL SERVICES
- LAND SURVEYING
- PUBLIC WORKS
- WATER RESOURCES

**THE KEITH COMPANIES, NEVADA**



**DUNMORE HOMES INC.**  
**MountainAire AT ELKHORN SPRINGS**  
**UNIT I**  
**MASTER UTILITY AND TRAFFIC PLAN**

SHEET NO.: **6**

**RECORD DRAWING**

6 OF 11 SHEETS

November 21, 1996 3:52:35 p.m. Drawing: G:\DHI\50655\655PH2-LDWG (A7) Xrefs: 65565E.DWG

D:\UN1\50655\655PH2-L DWG Dec 13, 14, 08, 56 1996 Drive: C:\Program Files\AutoCAD\Std\Standard.fpl pc-48605008 HP Desig: plot 650C C:\ACAD12\DATA\PLT\STANDARD.CFG 11:HP-GL/2 ADI 4.2 Ver 1.3 by Hanklett-Packard

5351

"As Built"

307 Y-44 43-2

