

WATER DISTRICT STANDARD NOTES

- 1. NO WORK SHALL BE DONE UNTIL THE WATER PLANS HAVE BEEN RELEASED FOR CONSTRUCTION BY THE LVVWD...
2. ALL WORK SHALL CONFORM TO LVVWD STANDARD PLANS, DRAWINGS, AND SPECIFICATIONS...
3. ALL WORK, EXCEPT AS MODIFIED BY THESE PLANS OR BY NOTE 2, SHALL BE DONE IN ACCORDANCE WITH THE MOST CURRENT DRAFT OR EDITION OF THE UNIFORM STANDARD SPECIFICATIONS FOR PUBLIC WORKS CONSTRUCTION...
4. A SINGLE PIPE MATERIAL SHALL BE USED THROUGHOUT THE PROJECT UNLESS OTHERWISE APPROVED BY THE LVVWD...
5. ALL SERVICE LATERALS TWO (2) INCHES IN DIAMETER AND SMALLER SHALL BE COPPER TUBING WITH LVVWD APPROVED SERVICE SADDLES...
6. ALL WATER METER BOXES SHALL BE LOCATED OUTSIDE OF DRIVEWAY AREAS...
7. ALL VALVES SHALL BE LOCATED OUTSIDE OF DRIVEWAYS, VALLEYS AND CURB CUTTERS...
8. THE FOLLOWING REQUIREMENTS MUST BE MET IN THE EVENT A WATER LINE AND A SANITARY OR STORM SEWER LINE CROSS...
9. WARNING TAPE SHALL BE REQUIRED OVER ALL MAINS, ALL SIX (6) INCH DIAMETER AND LARGER SERVICE LATERALS, AND ANY SERVICE LATERAL NOT INSTALLED PERPENDICULAR TO THE MAIN IN ACCORDANCE WITH STANDARD PLATE NO. 27...
10. ALL WATER FACILITIES SHALL BE FILLED, DISINFECTED, PRESSURE TESTED, FLUSHED AND FILLED WITH POTABLE WATER SAMPLE OBTAINED PRIOR TO CONNECTION TO THE LVVWD'S DISTRIBUTION SYSTEM...
11. THE CONTRACTOR MUST OBTAIN ALL METERS TWO (2) INCHES AND SMALLER FROM LVVWD CENTRAL STORES...
12. CONSTRUCTION MAY INTERRUPT SERVICE WITH LVVWD APPROVAL AND PROPER NOTIFICATION...
13. ALL WATER FACILITY CONSTRUCTION MATERIALS USED MUST BE AS LISTED ON THE LVVWD APPROVED MATERIALS AND MANUFACTURERS LISTING FOR NEW FACILITIES...

REDUCED PRESSURE PRINCIPLE ASSEMBLY

APPROVED REDUCED PRESSURE PRINCIPLE ASSEMBLY SHALL BE INSTALLED PER THE UDACS PLATE NO. 111. NO WATER SHALL BE TAKEN FROM A SERVICE REQUIRING BACKFLOW PREVENTION UNLESS THE REDUCED PRESSURE PRINCIPLE ASSEMBLY HAS BEEN SUCCESSFULLY TESTED BY THE LVVWD.

ANY BLOCK WALL OR OTHER FENCE MATERIAL SHALL BE DESIGNED AND CONSTRUCTED AROUND THE OUTSIDE OF THE EASEMENT TO ALLOW THE DISTRICT DIRECT ACCESS FROM THE ADJACENT RIGHT-OF-WAY.

MINIMUM 1" W.M. REQUIRED ON ALL LOTS

CITY OF LAS VEGAS SEWER NOTES

- 1. ALL CONSTRUCTION AND MATERIALS SHALL BE IN ACCORDANCE WITH THE LATEST EDITION OF THE DESIGN AND CONSTRUCTION STANDARDS FOR WASTEWATER COLLECTION SYSTEMS...
2. IT SHALL BE THE CONTRACTOR'S RESPONSIBILITY TO PERFORM CONSTRUCTION AS PER PLANS...
3. DIESEL "S" OR "C" IN CURBS WHERE SEWER OR GAS LATERALS PASS UNDER THE CURB...
4. POLYVINYL (PVC) SEWER PIPE SHALL MEET ASTM D-3034 SDR 35 SPECIFICATIONS...
5. ALL MANHOLE, IN PAVED STREETS 80' R/W AND LARGER, SHALL HAVE CONCRETE COLLARS...
6. TEE SADDLES SHALL BE USED TO CONNECT SERVICE LATERALS TO EXISTING MAIN LINES...
7. SEWER MAIN CROSSING OVER A WATER MAIN OR LESS THAN 18" UNDER A WATER MAIN...
8. ALL CONTRACTORS INSTALLING SEWER MAINS THAT WILL BE UNDER THE JURISDICTION OF THE CONTROLLING AGENCY MUST BE CLASS "A" CONTRACTORS...
9. THE CITY OF LAS VEGAS WILL NOT ACCEPT ANY SEWER MAINS WHICH HAVE A VERTICAL DEFLECTION OF MORE THAN ONE TENTH (0.1) OF A FOOT FROM THE APPROVED CONSTRUCTION PLANS...

STREET LIGHT NOTE

ALL STREET LIGHTING INSTALLATION EXCEPT AS NOTED ON THE STREET LIGHTING PLANS SHALL CONFORM TO THE IMPROVEMENT STANDARDS, DEPARTMENT OF PUBLIC WORKS, CLARK COUNTY, NEVADA, AND THE UNIFORM STANDARD SPECIFICATIONS FOR PUBLIC WORKS CONSTRUCTION...

WATER CROSSING NOTE

THE FOLLOWING ARE THE REQUIREMENTS THAT MUST BE MET WHEN THERE IS A WATER-SEWER CROSSING:

- WHEN PROTECTION OF THE WATERLINE IS CONSIDERED, THE MINIMUM VERTICAL DISTANCE OF 18 INCHES MUST BE MAINTAINED WHEN THE WATER LINE IS INSTALLED OVER THE SEWER/STORM LINE...
A. EXTRA HEAVY CAST IRON OR DUCTILE IRON PIPE
B. WATER SUPPLY QUALITY MATERIAL
C. ENCASUREMENT WITH 4 INCHES MINIMUM OF CONCRETE OR SLEEVING WITH WATER QUALITY PIPE

EACH OF THESE PROVISIONS MUST BE EXTENDED FOR 10 FEET ON EITHER SIDE OF THE WATERLINE AT 90 DEGREES TO THE CROSSING.

Call before you Dig
1-800-227-2600

BASIS OF BEARINGS:

NORTH 03°21'07" WEST, BEING THE BEARING OF THE CENTERLINE OF TENAYA WAY AND THE WEST LINE OF THE SOUTHWEST QUARTER (SE 1/4) OF THE NORTHWEST QUARTER (NW 1/4) OF SECTION 3, TOWNSHIP 21 SOUTH, RANGE 60 EAST, M.D.M., CLARK COUNTY, NEVADA, AS SHOWN ON THAT CERTAIN PLAT ON FILE IN THE COUNTY RECORDER'S OFFICE, CLARK COUNTY, NEVADA, IN BOOK 42 OF PLATS, AT PAGE 69.

BENCHMARK:

CLV BM 7C10-10N4
NAVD 88 ELEV: 747.919 METERS (2453.80 FEET)
RIVET AND SQUARE ALUMINUM PLATE IN THE NORTHEAST CORNER OF FIRE HYDRANT BASE, 400 FEET SOUTH OF SAHARA AVENUE ON THE WEST SIDE OF TENAYA WAY.

FIRE DEPARTMENT NOTES

- 1. ALL WORK SHALL BE DONE IN STRICT ACCORDANCE WITH THE CITY OF LAS VEGAS FIRE DEPARTMENT "HYDRANT SPECIFICATIONS," "HYDRANT INSTALLATION SPECIFICATIONS" AND ORDINANCE #3944...
2. AUTHORIZED HYDRANTS FOR THIS PROJECT ARE:
A. MUELLER A-423 CENTURIAN
B. CLOW MODEL 2546 MEDALLION
3. ON ANY NEW HOME OR BUILDING INSTALLATION, ACCESSIBLE FIRE HYDRANTS SHALL BE INSTALLED BEFORE COMBUSTIBLE CONSTRUCTION COMMENCES...
4. CONTRACTOR SHALL PLACE A BLUE REFLECTIVE MARKER AT CENTERLINE OF STREET ADJACENT TO FIRE HYDRANT AS REQUIRED IN ORDINANCE #3944...
5. CALL THE LAS VEGAS FIRE DEPARTMENT AT 228-2071 FOR UNDERGROUND INSPECTION, PRESSURE AND FLUSH VERIFICATION OF ALL FIRE HYDRANTS AND FIRE LINES BEFORE COVERING...
6. PAINTING OF THE CURBS AND HYDRANTS AND ANY WORK NECESSARY FOR PROTECTION OF HYDRANTS FROM PHYSICAL DAMAGE PER ORDINANCE #3944 SHALL BE COMPLETED BEFORE APPROVAL BY THE CITY OF LAS VEGAS FIRE DEPARTMENT...
7. A PERMIT IS REQUIRED FROM THE FIRE DEPARTMENT FOR ON-SITE WATER LINE AND FIRE HYDRANT THE PERMIT AND CONTRACTOR'S MATERIAL AND TEST CERTIFICATE FOR UNDERGROUND PIPING FORM SHALL BE OBTAINED FROM THE FIRE PROTECTION ENGINEER PRIOR TO ANY WORK BEGINNING...
8. PRIVATE FIRE HYDRANTS SHALL BE PAINTED RED...
9. A FLOW TEST MUST BE WITNESSED BY THE FIRE DEPARTMENT PRIOR TO OCCUPANCY FOR VERIFICATION OF REQUIRED ON-SITE WATER SUPPLY...
10. ALL ON-SITE FIRE MAIN MATERIALS MUST BE U.L. LISTED AND A.N.W.A. APPROVED...
11. FIRE HYDRANT SPACING:
RESIDENTIAL - 500 FEET UNSPRINKLERED, 1,000 FEET SPRINKLERED
COMMERCIAL, INCLUDING MULTI-FAMILY - 300 FEET UNSPRINKLERED, 600 FEET SPRINKLERED...
12. WHERE NEW WATER MAINS ARE EXTENDED ALONG STREETS, WHERE HYDRANTS ARE NOT NEEDED FOR PROTECTION OF STRUCTURES, FIRE HYDRANTS SHALL BE SPACED AT MAXIMUM 1,000 FOOT SPACING TO PROVIDE FOR TRANSPORTATION HAZARDS...
13. NO FIRE HYDRANT SHALL BE LOCATED WITHIN THE REQUIRED RADIUS OF A CUL-DE-SAC OR WITHIN 30 FEET OF THE PERIMETER OF THE RADIUS OF THE CUL-DE-SAC...
14. NO FIRE HYDRANT SHALL BE LOCATED WITHIN 6 FEET OF ANY CURB RETURN, DRIVEWAY, POWER POLE, STREET LIGHT OR ANY OTHER OBSTRUCTION...
15. TWO SOURCES OF SUPPLY ARE REQUIRED WHENEVER THERE ARE 4 OR MORE HYDRANTS INSTALLED ON A SINGLE SYSTEM...
16. NOT MORE THAN 2 HYDRANTS CAN BE OUT OF SERVICE DUE TO A SINGLE MAIN BREAK.

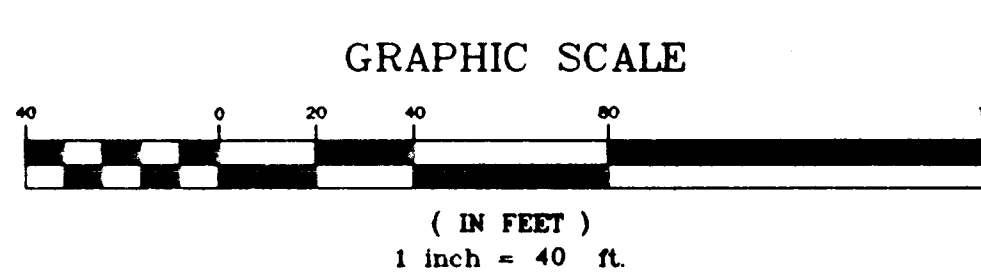
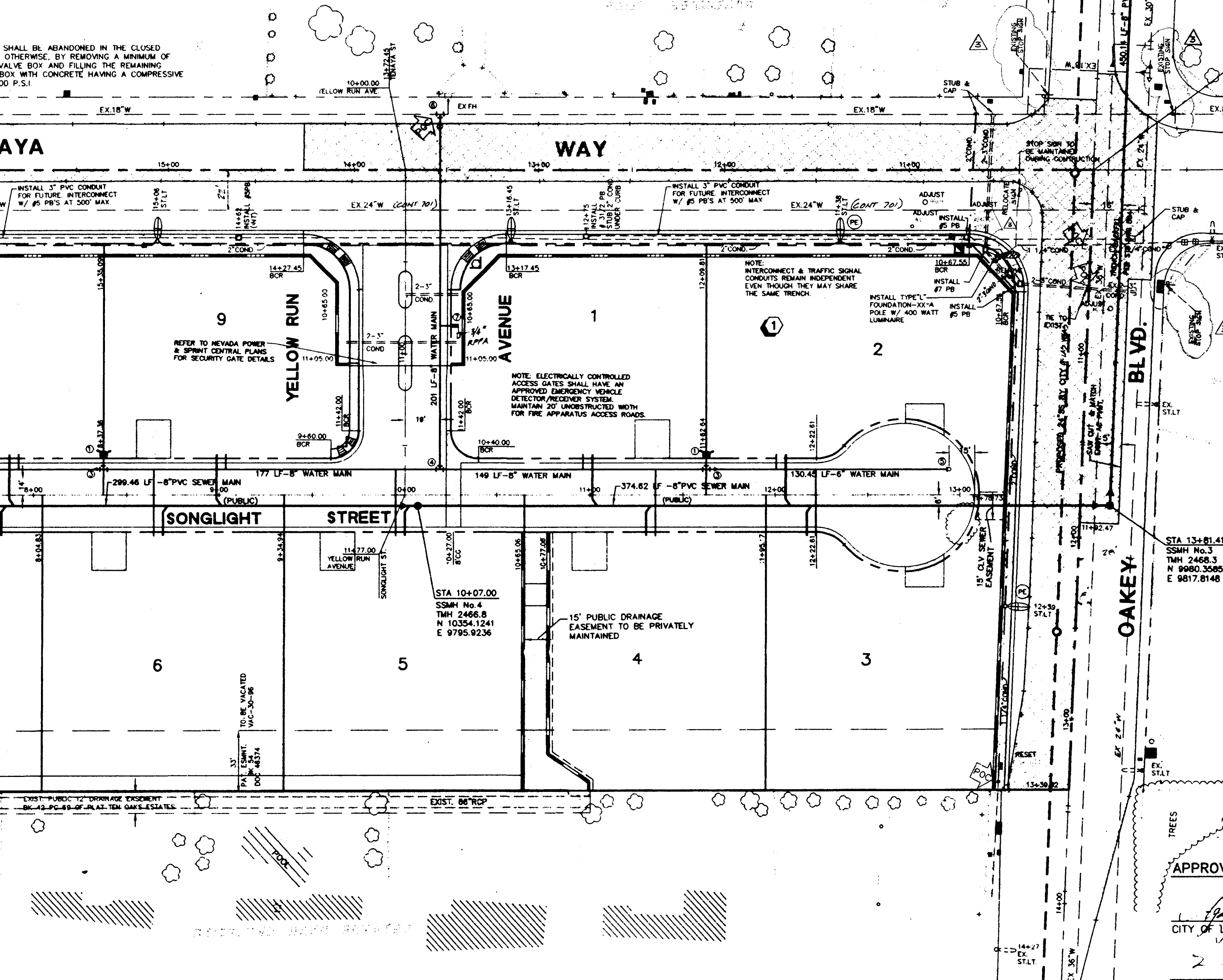
ESTIMATE OF QUANTITIES

Table with 2 columns: Item description and Quantity. Includes items like PHOTO EYE, 200 WATT LUMINAIRE, 2" PVC CONDUIT, 1 1/4" PVC CONDUIT, #3 1/2 PULL BOX, STOP SIGN, STREET NAME SIGN, DRIVEWAY LOCATION SCHEMATIC ONLY, POINT OF CONNECTION (UTILITIES), 400 WATT LUMINAIRE.

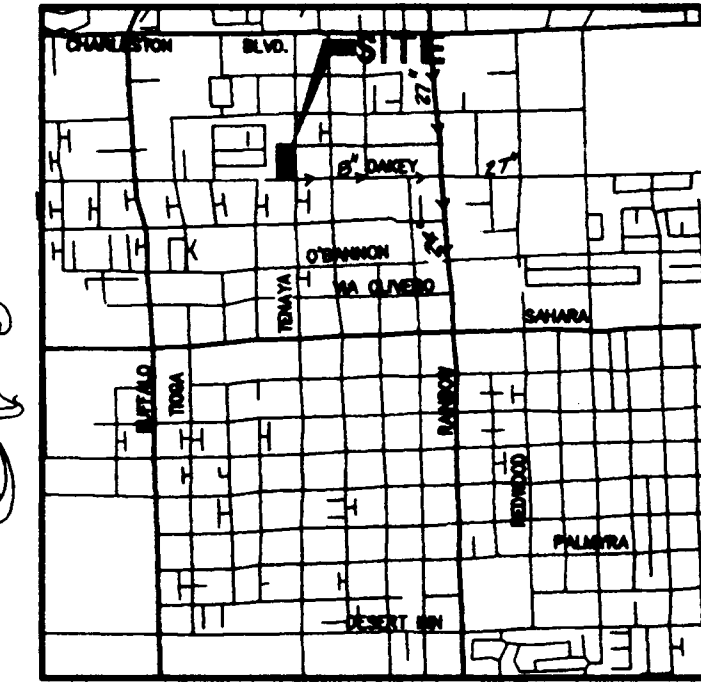
ESTIMATE OF QUANTITIES

Table with 2 columns: Item description and Quantity. Includes items like FIRE HYDRANT ASSEMBLY, GATE VALVE, 8" x 6" REDUCER, 8" TEE, 2" B.O., 8" x 8" M.J. TAPPING TEE & VALVE, 1" COPPER SERVICE, STANDARD MANHOLE, SEWER MAIN, SEWER LATERALS, SEWER WYES.

Table with 2 columns: Item description and Quantity. Includes items like 200 AMP METER, 2-2P 60A CB, 1-1P 15A CB, 1-1P 40A CB, 2-2P 60A CONTACTORS, 1 BYPASS SWITCH PER CONTACTOR.

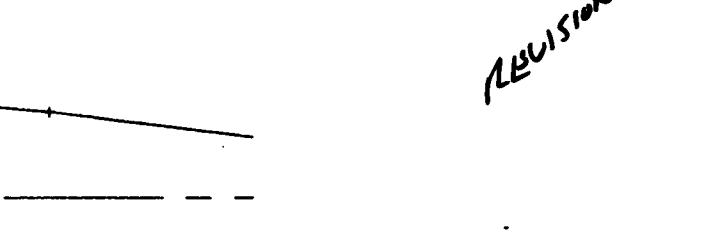
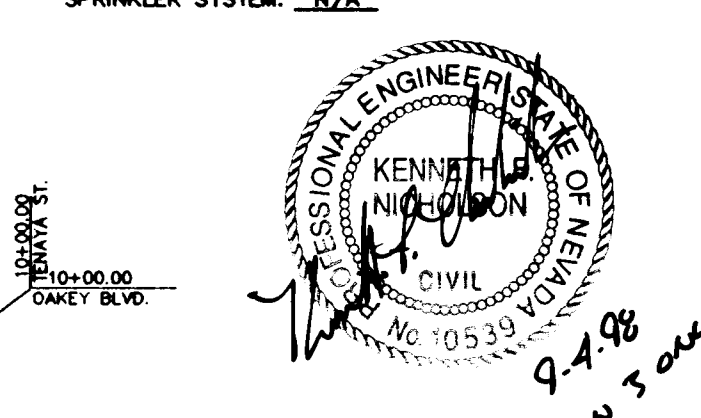


NOTE: CONTRACTOR SHALL VERIFY HORIZONTAL AND VERTICAL ALIGNMENT OF EXISTING UTILITIES AND TO NOTIFY THE DESIGN ENGINEER IMMEDIATELY OF ANY DISCREPANCIES PRIOR TO CONSTRUCTION.



LAS VEGAS FIRE DEPARTMENT

FIRE FLOW REQUIREMENTS IS: 1500 GPM AT 20 PSI RESIDUAL PRESSURE.
BASED ON: SQUARE FOOTAGE: 2500 SF
LARGEST AREA BETWEEN 4-HR AREA SEPARATION WALLS: 1/4 AC
BUILDING HEIGHT: 25 FEET
NUMBER OF STORIES: 2 FLOORS
OCCUPANCY: SER
FULL AUTOMATIC FIRE SPRINKLER SYSTEM: N/A



PROJECT NAME: ...
This project water plan complies with the Las Vegas Valley Water District's technical requirements. However, this water plan is NOT APPROVED FOR CONSTRUCTION at this time and this signature does not provide or imply a water commitment.

APPROVALS:
City of Las Vegas Fire Marshall
Las Vegas Valley Water District
Nevada Power Company

Professional engineer information for Kenneth J. McLaughlin, Civil Engineer, License No. 10533, State of Nevada. Includes contact information for VTM Nevada.

Project information for Mountain Shadows IV, Master Utility Plan. Includes sheet number 5 of 7, date July 1996, and scale 1"=40'.

Vertical text on the far left edge of the page.

Vertical text on the far right edge of the page.

