

MELROSE PARK ESTATES MASTER UTILITY

LEGEND

EXISTING CENTERLINE	---	LF	LINEAL FEET
PROPERTY LINE	---	M4	MANHOLE
EASEMENT LINE	---	PL	PRIVATE DRIVE
GRADE BREAK	---	PL	PROPERTY LINE
SETBACK LINE	---	PUE	PUBLIC UTILITY EASEMENT
AC	ASPHALT CONCRETE DRIVEWAY	S	SEWER LINE
CL	CENTERLINE	STD	STANDARD
DW	DRIVEWAY	SW	SEWALK
ENG	ENGINEERING	TC	TOP OF CURB
EP	EDGE OF PAVEMENT	TMSH	TOP OF MANHOLE
EX	EXISTING	TYP	TYPICAL
FG	FINISHED GRADE	VG	VALLEY GUTTER
FL	FIRE HYDRANT	W	WATER LINE
FL	FLOW LINE		
FUT	FUTURE		
GB	GRADE BREAK		
HP	HIGH POINT		
IN	INVERT		
LOT No.	0000	PROPOSED ELEV.	
BLOCK No.	10000	EX. ELEV.	

ENGINEER ESTIMATE OF QUANTITIES

WATER QUANTITIES

6" P.V.C. WATER LINE	15 LF
8" P.V.C. WATER LINE	1024 LF
8" X 8" TEE	1 EA
8" X 4" TEE	1 EA
8" 45° ELBOW	6 EA
8" GATE VALVE	2 EA
FIRE HYDRANT ASSEMBLY	2 EA
5/8" WATER METER SERVICE PER LVVWD STD PLATE NO. B	31 EA
1" COPPER LINE	818 LF
2" BLOW OFF PER LVVWD STD PL. 4	1 EA
1" WATER METER W/ RPPA	1 EA

SEWER QUANTITIES

4" P.V.C. SEWER LATERAL	568 LF
48" CONCRETE MANHOLES	1 EA

STREET LIGHT QUANTITIES

100 W HPS LUMINAIRE	5 EA
250 W HPS LUMINAIRE	2 EA
3" CONDUIT	1330 LF
5" RULLBOXES	6 EA

STREET SIGN QUANTITIES

STOP SIGN	2 EA
STREET NAME	2 EA
NO PARKING SIGN	2 EA

LVVWD GENERAL NOTES

- NO WORK SHALL BEGUN UNTIL THE WATER PLANS HAVE BEEN RELEASED FOR CONSTRUCTION BY LVVWD. FOLLOWING WATER PLAN APPROVAL, 48 HOUR NOTICE SHALL BE GIVEN TO THE LVVWD COMMUNICATIONS SUPPORT CENTER 105-7011 PRIOR TO THE START OF CONSTRUCTION. NOTICE MUST BE GIVEN BY 2:00 PM THE BUSINESS DAY PRIOR TO A LVVWD INSPECTION.
- ALL WORK SHALL CONFORM TO LVVWD STANDARD PLATES, DRAWINGS, AND SPECIFICATIONS. THE UNIFORM DESIGN AND CONSTRUCTION STANDARD FOR WATER DISTRIBUTION SYSTEMS (40DCS), LATEST EDITION.
- ALL WORK EXCEPT AS MODIFIED HEREON OR BY NOTE 2, SHALL BE DONE IN ACCORDANCE WITH THE MOST CURRENT DRAFT OR ADDITION OF THE UNIFORM STANDARD SPECIFICATIONS FOR PUBLIC WORKS CONSTRUCTION OPPOSITE APPROVED BY CLARK COUNTY AREA.
- A SINGLE PIPE MATERIAL SHALL BE USED THROUGHOUT THE PROJECT UNLESS OTHERWISE APPROVED BY THE LVVWD.
- ALL SERVICE LATERALS TWO INCHES IN DIAMETER AND SMALLER SHALL BE COPPER TUBING WITH LVVWD APPROVED SERVICE SADDLES.
- ALL WATER METER BOXES SHALL BE LOCATED OUTSIDE OF DRIVEWAY AREAS.
- ALL VALVES SHALL BE LOCATED OUTSIDE OF DRIVEWAYS, VALLEY AND CURB GUTTERS. THE FOLLOWING REQUIREMENTS MUST BE MET IN THE EVENT A WATER LINE AND SANITARY OR STORM SEWER LINE CROSS:
 - A MINIMUM EIGHTEEN (18) INCH VERTICAL SEPARATION OUTSIDE TO OUTSIDE MUST BE MAINTAINED WHEN THE WATER IS INSTALLED OVER THE SANITARY OR STORM SEWER LINE. IF THE VERTICAL SEPARATION CANNOT BE MAINTAINED OR THE WATER LINE MUST BE PLACED UNDER THE SANITARY OR STORM SEWER LINE, THE WATER LINE MUST BE CONSTRUCTED WITH ONE OF THE FOLLOWING OR AS SHOWN ON THESE PLANS:
 - POTABLE WATER SUPPLY QUALITY MATERIAL.
 - ENCASMENT WITH FOUR (4) INCH CONCRETE MINIMUM.
 - SLEEVING WITH POTABLE WATER SUPPLY QUALITY PIPE.
 - EACH PROVISION MUST EXTEND ALONG THE SANITARY OR STORM SEWER ON EITHER SIDE OF THE MAIN A MINIMUM OF TEN (10) FOOT DISTANCE PERPENDICULAR TO THE WATER MAIN EXTERIOR.
- WARNING TAPE SHALL BE REQUIRED OVER ALL MAINS SIX (6) INCH DIAMETER AND LARGER SERVICE LATERALS, AND ANY SERVICE LATERAL NOT INSTALLED PERPENDICULAR TO THE MAIN IN ACCORDANCE WITH STANDARD PLATE NO. 27.
- ALL WATER FACILITIES SHALL BE FLEED, DISINFECTED, PRESSURE TESTED, FLEED, FLEED AND AN ACCEPTABLE WATER SAMPLE OBTAINED, PRIOR TO CONNECTION TO THE LVVWD'S DISTRIBUTION SYSTEM.
- THE CONTRACTOR MUST OBTAIN ALL METERS TWO (2) INCHES AND SMALLER FROM LVVWD CENTRAL STORES. TELEPHONE 258-3522 FORTY-EIGHT HOURS PRIOR TO PICKUP.
- CONSTRUCTION MAY INTERRUPT SERVICE WITH LVVWD APPROVAL AND PROPER NOTIFICATION BETWEEN THE HOURS OF 10 PM AND 6 AM, SUNDAY THROUGH THURSDAY. CIRCUMSTANCES MAY REQUIRE TEMPORARY SERVICE FEES BE INSTALLED WITHOUT LVVWD REIMBURSEMENT. ANY TEMPORARY SERVICE FEES MUST HAVE PRIOR LVVWD APPROVAL.
- ALL WATER FACILITY CONSTRUCTION MATERIALS USED MUST BE AS LISTED ON THE LVVWD PRE-APPROVED MATERIALS AND MANUFACTURERS LISTING FOR REV FACILITIES. LATEST REVISION, OR SPECIALLY APPROVED ON THESE PLANS.

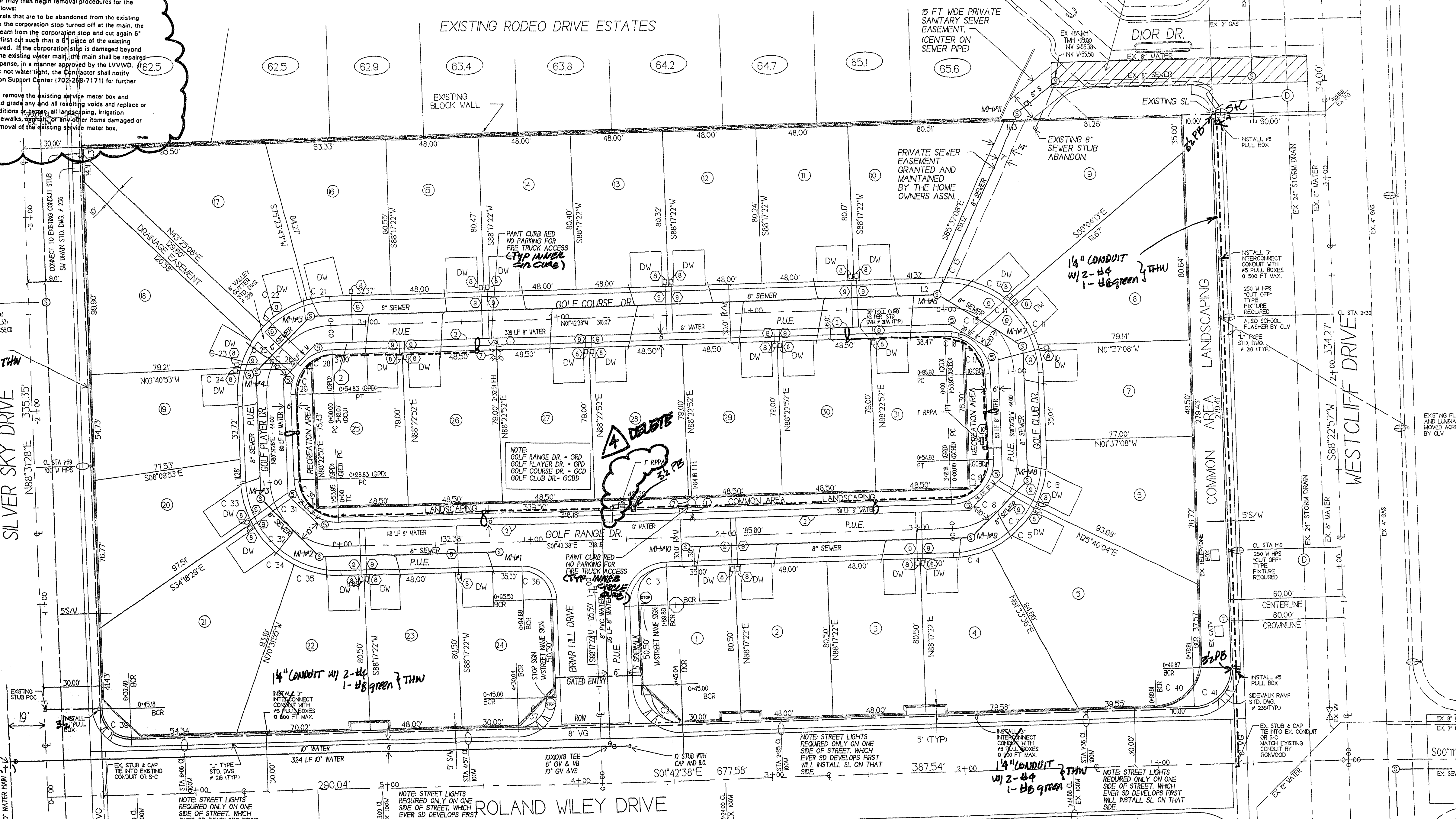
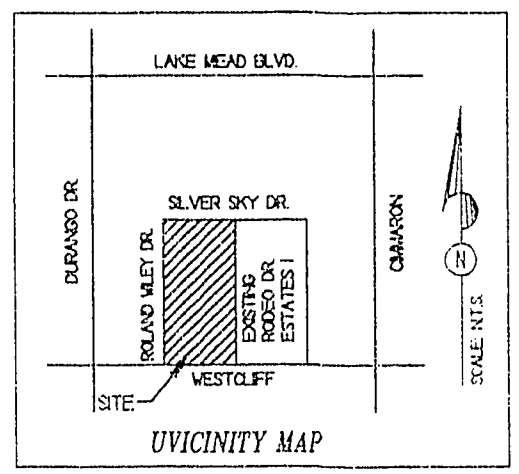
1" WM ACOT # 60079

ABANDONMENT OF EXISTING SERVICE(S) 2" AND SMALLER

The Contractor shall notify the Inspection Division at the LVVWD (702) 258-3271 48 hours prior to the requested removal time to allow the District to take the final meter reading of the meter. After the final reading, the Contractor may then begin removal procedures for the affected service as follows:

Existing service laterals that are to be abandoned from the existing water main, shall have the corporation stop turned off at the main, the lateral cut 6" downstream from the corporation stop and cut again 6" downstream from the first cut such that a 6' piece of the existing service lateral is removed. If the corporation stop is damaged beyond repair or pulled from the existing water main, the main shall be repaired at the Contractor's expense, in a manner approved by the LVVWD. (62.5)

The Contractor shall remove the existing service meter box and appurtenances. Fill and grade any and all resulting voids and replace or restore to original conditions by setting, all landscaping, irrigation systems, concrete, sidewalks, asphalt, or any other items damaged or removed during the removal of the existing service meter box.



1 1/2" CONDUIT W/ 2-44 1-46 green THW

1 1/2" CONDUIT W/ 2-44 1-46 green THW

1 1/2" CONDUIT W/ 2-44 1-46 green THW

IRONWOOD IMPROVEMENTS
PROJECT NAME: Melrose Park Estates
This project water plan complies with the Las Vegas Valley Water District's technical requirements. However, this water plan is NOT APPROVED FOR CONSTRUCTION at this time and this signature does not provide or imply a water commitment.

MELROSE PARK ESTATES

SCALE: 1" = 30'

APPROVALS:

[Signature] 9-26-95
CITY OF LAS VEGAS FIRE DEPARTMENT
[Signature] 10-24-95
LAS VEGAS VALLEY WATER DISTRICT

NOTE: REFER TO SHEET 2 FOR CURVE DATA.

NOTE: ALL ONSITE SEWERS ARE PRIVATE AND WILL BE MAINTAINED BY THE HOMEOWNERS ASSOCIATION.

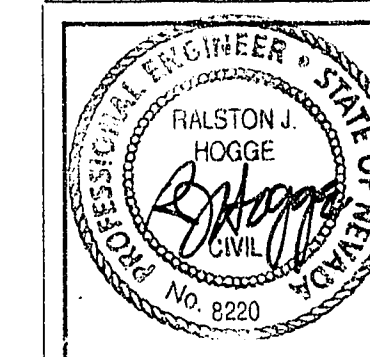
WATER NOTE:
CONSTRUCT THURST BLOCKS PER LVVWD STD PL. 3.
CONSTRUCT TRENCHES FOR WATER MAIN PER LVVWD STD PL. 6B AND SERVICE LATERALS PER LVVWD STD PL. 6I.
BACKFLOW PREVENTION DEVICE DOUBLE CHECK ASSEMBLY PER LVVWD STD PL. 1D.

REDUCED PRESSURE PRINCIPLE ASSEMBLY
APPROVED REDUCED PRESSURE PRINCIPLE ASSEMBLY(S) SHALL BE INSTALLED PER THE LVVWD PL. NO. 10. NO WATER SHALL BE TAKEN FROM A SERVICE LINE UNLESS A REDUCED PRESSURE PRINCIPLE ASSEMBLY HAS BEEN SUCCESSFULLY TESTED BY THE LVVWD.
ANY BLOCK WALL OR OTHER FENCE MATERIAL SHALL BE DESIGNED AND CONSTRUCTED AROUND THE OUTSIDE OF THE EASEMENTS TO ALLOW THE DESIRED DIRECT ACCESS FROM THE ADJACENT RIGHT-OF-WAY.

NOTICE
EXISTING UTILITIES ARE ONLY SHOWN ON THESE PLANS FOR THE CONVENIENCE OF THE CONTRACTOR.
THE CONTRACTOR IS RESPONSIBLE FOR THE PROTECTION AND LOCATION OF ALL EXISTING UTILITIES.
THE ENGINEER BEARS NO RESPONSIBILITY FOR UTILITIES NOT SHOWN OR SHOWN INCORRECTLY ON THESE PLANS.

IT'S COSTLY, CALL BEFORE YOU DIG
1-800-227-2600
ALWAYS SHOW A UTILITY LOCATOR BEFORE YOU DIG.

NOTE
THE FOLLOWING REQUIREMENTS MUST BE MET IN THE EVENT A WATER LINE AND SANITARY OR STORM SEWER LINE CROSS:
A. MINIMUM EIGHTEEN (18) INCH VERTICAL SEPARATION OUTSIDE TO OUTSIDE MUST BE MAINTAINED WHEN THE WATER IS INSTALLED OVER THE SANITARY OR STORM SEWER LINE. IF THE VERTICAL SEPARATION CANNOT BE MAINTAINED OR THE WATER LINE MUST BE PLACED UNDER THE SANITARY OR STORM SEWER LINE, THE WATER LINE MUST BE CONSTRUCTED WITH ONE OF THE FOLLOWING OR AS SHOWN ON THESE PLANS:
1. POTABLE WATER SUPPLY QUALITY MATERIAL.
2. ENCASMENT WITH FOUR (4) INCH CONCRETE MINIMUM.
3. SLEEVING WITH POTABLE WATER SUPPLY QUALITY PIPE.



CIVIL ENGINEER
RALSTON JAMES HOGGIE, P.E.
581 HOTEL PLAZA
BOULDER CITY, NEVADA 89005

MELROSE PARK ESTATES
LAS VEGAS, NV

MASTER UTILITY PLAN

NO.	DATE	DESCRIPTION	APPROVED
1	8/10/95	CHANGES PER CITY REVIEW	
2	8/10/95	CHANGES PER CITY REVIEW	
3	10/24/95	CHANGES PER LVVWD REVIEW	
4	10/24/95	CHANGES PER LVVWD REVIEW	

DATE: 8/10/95
SCALE: 1" = 30'
DRAWN: DC/BJ/RH
SHEET 3 OF 11

11-25-01

307Y-44/24