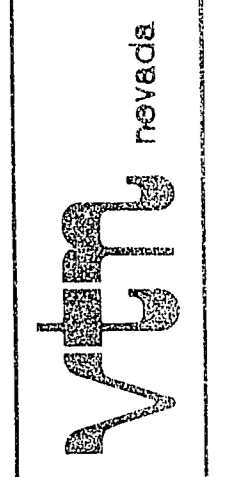
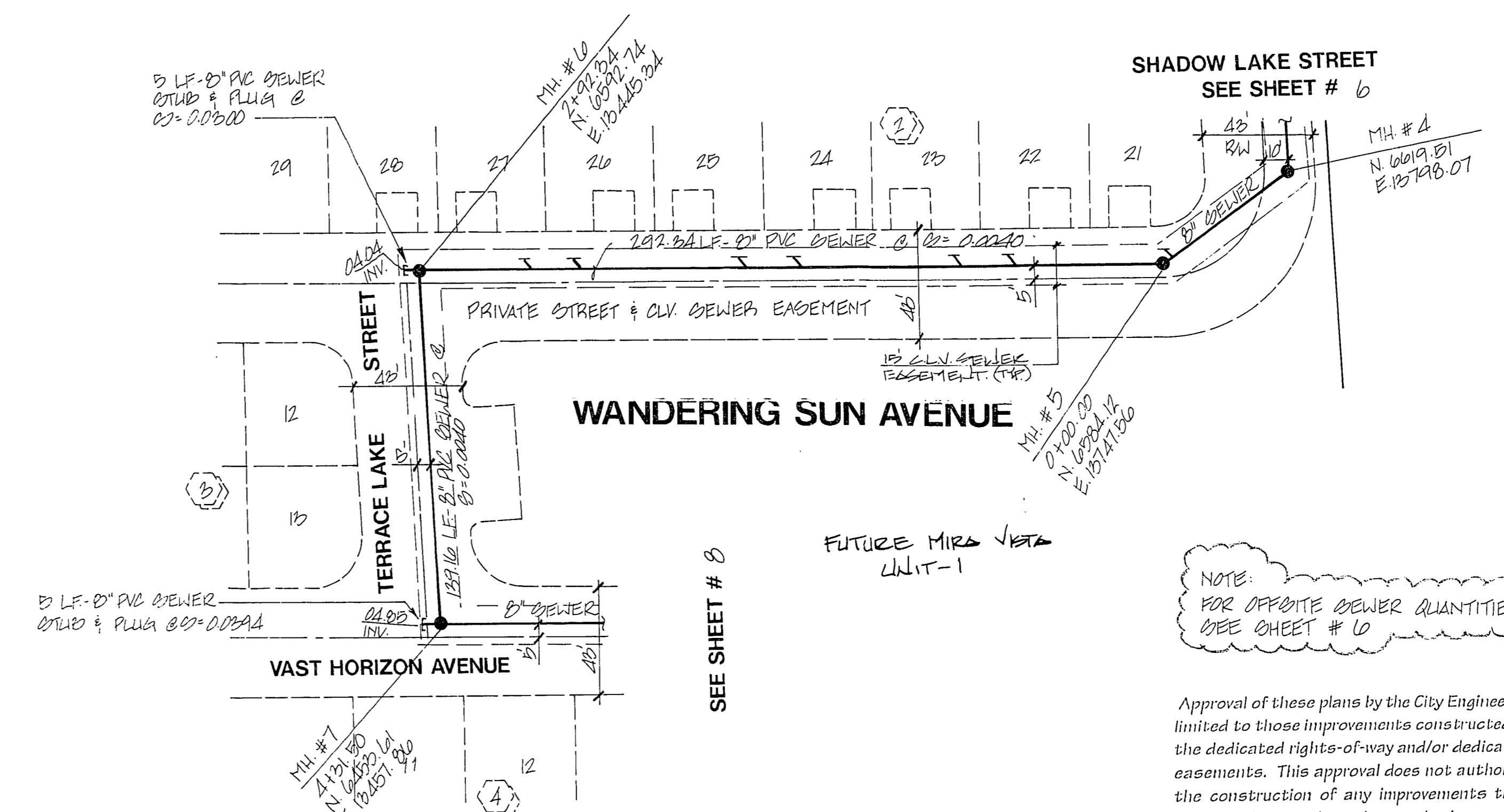


2420
2415
2410
2405

COLLINS BROTHERS
CITY OF LAS VEGAS, NEVADA



CONSULTING ENGINEERS • PLANNERS • LAND SURVEYORS
2727 SOUTH RAINBOW BOULEVARD
LAS VEGAS, NEVADA 89102-5148 PHONE (702) 873-1550 FAX (702) 362-2597



SHADOW LAKE STREET
SEE SHEET # 6

WANDERING SUN AVENUE

VAST HORIZON AVENUE

NOTE:
FOR OPPOSITE SEWER QUANTITIES
SEE SHEET # 10

Approval of these plans by the City Engineer is limited to those improvements constructed in the dedicated rights-of-way and/or dedicated easements. This approval does not authorize the construction of any improvements that deviate from adopted standards and/or specifications except those specifically listed under "Deviations from Standards." The Engineer shall resolve any deviation other than those listed in "Deviations from Standards" in favor of the Uniform Standards Drawings and Specifications Clark County Area Nevada.

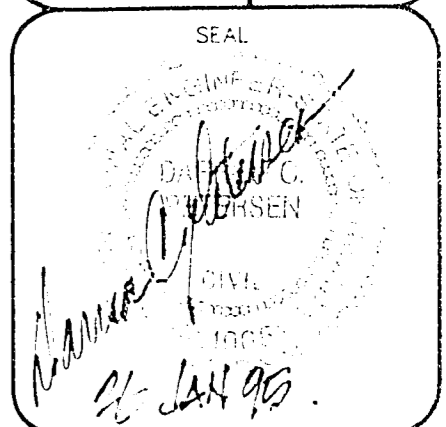
NOTE: ALL INTERIOR STREETS ARE PRIVATELY OWNED AND MAINTAINED.
ALL SEWERS ARE TO BE MAINTAINED BY C.L.V.

BENCHMARK
CITY OF LAS VEGAS BENCHMARK
RIVET AND PLATE BY SURV OF GEORGE LIGHTNING
RETURN TO CHESTERFIELD, ALEXANDER AND RANFORD DRIVE
CITY OF LAS VEGAS, NEVADA

OFFSITE SEWER PLAN & PROFILE

WANDERING SUN AVENUE

MIRA VISTA
UNIT 2



NO. 10/19/94
BY: DJR
DATE: 10/19/94
SCALE: HORIZ. = 1" = 40'
VERT. = 1" = 4'
SHEET 7 OF 13 SHEETS

307Y-4370-2