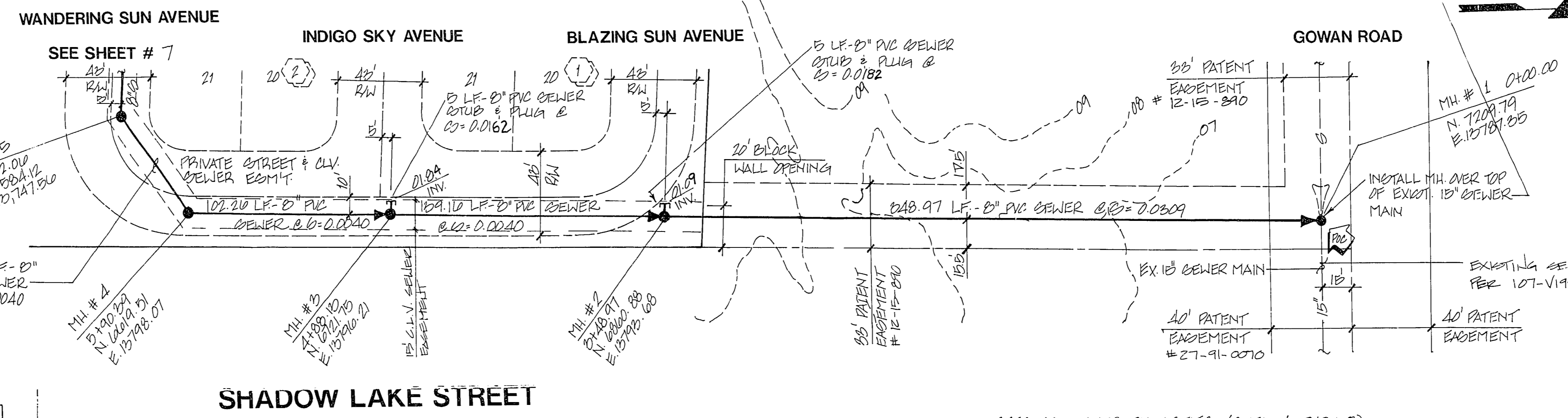


NOTE:
 CONTRACTOR TO VERIFY HORIZONTAL AND VERTICAL ALIGNMENT OF EXISTING UTILITIES AND TO NOTIFY THE ENGINEER IMMEDIATELY OF ANY DISCREPANCIES PRIOR TO CONSTRUCTION.



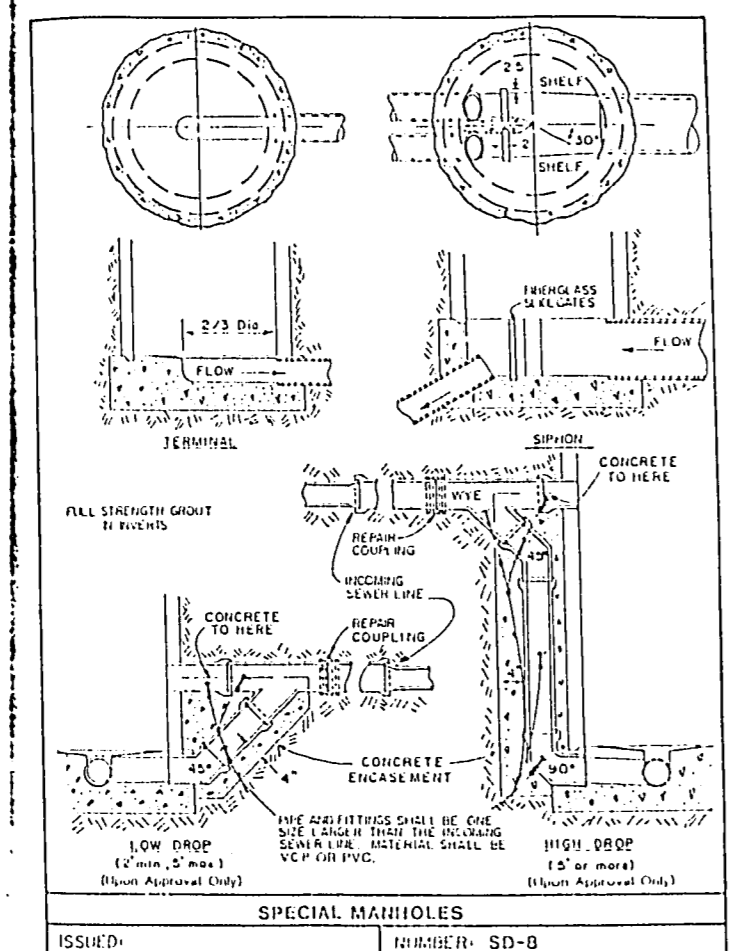
SHADOW LAKE STREET

OFFSITE SEWER QUANTITIES (CHGS 6 THRU 9)

8" SEWER MAIN	1,580 LF
W/20	14 EA.
STANDARD MH	10 EA.

Approval of these plans by the City Engineer is limited to those improvements constructed in the dedicated rights-of-way and/or dedicated easements. This approval does not authorize the construction of any improvements that deviate from adopted standards and/or specifications except those specifically listed under "Deviations from Standards". The Engineer shall resolve any deviation other than those listed in "Deviations from Standards" in favor of the Uniform Standards Drawings and Specifications Clark County Area Nevada.

NOTE: ALL INTERIOR STREETS ARE PRIVATELY OWNED AND MAINTAINED. ALL SEWERS ARE TO BE MAINTAINED BY C.L.V.



BENCHMARK
 CITY OF LAS VEGAS BENCHMARK
 POINT AND PLATE IN FRONT OF 1300 S. 13TH ST.
 RETURN TO CONCRETE AGENCY, 400 N. RAINBOW BLVD. 1ST FLOOR, LAS VEGAS, NV 89102
 ELEVATION: 2446.25'

OFFSITE SEWER PLAN & PROFILE

SHADOW LAKE STREET

MIRA VISTA
 UNIT 2

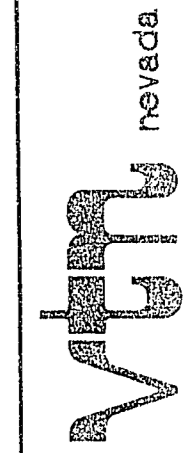
SEAL
 [Signature]
 06 JAN 95

NO. 1068A-2
 BY: WJR
 DATE: 10/92
 SCALE: HORIZ: 1"=40'
 VERT: 1"=4'

SHEET 6 OF 13 SHEETS

3074-4370-2

COLLINS BROTHERS
 CITY OF LAS VEGAS, NEVADA



CONSULTING ENGINEERS & PLANNERS & LAND SURVEYORS
 2727 SOUTH RAINBOW BOULEVARD
 LAS VEGAS, NEVADA 89102-5448 PHONE (702) 873-5500 FAX (702) 362-2597

11-18-6