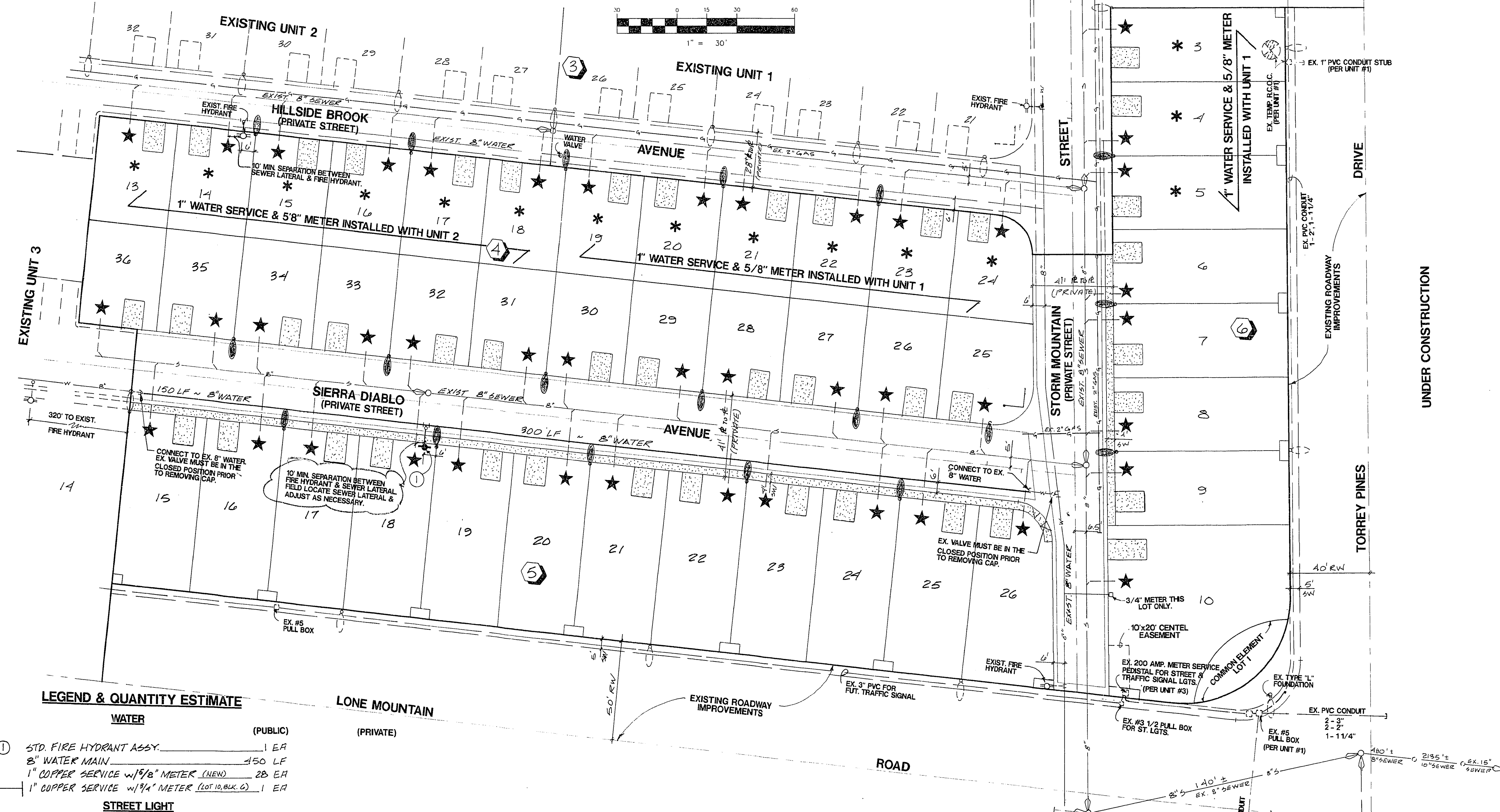
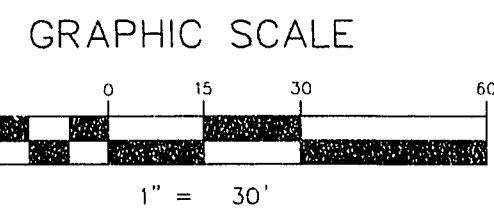


LAS VEGAS VALLEY WATER DISTRICT STANDARD NOTES

- No work shall begin until the water plans have been released for construction by the LVVWD. Following water plan approval, 48 hour notice shall be given to the LVVWD Communication Support Center (258-7171) prior to the start of construction. Notice must be given by 2:00 p.m. the business day prior to a LVVWD inspection.
- All work shall conform to the LVVWD's Standard Plans, Drawings, and Specifications and the Uniform Design and Construction Standards for Water Distribution Systems (UDCS), latest edition.
- All work, except as modified by these plans or by Note 2, shall be done in accordance with the most current draft or edition of the Uniform Standard Specifications for Public Works Construction Official Improvement, Clark County Area.
- A single pipe material shall be used throughout the project unless otherwise approved by the LVVWD.
- All service laterals two (2) inches in diameter and smaller shall be copper tubing with LVVWD approved service saddles.
- All water meter boxes shall be located outside of driveway areas.
- All valves shall be located outside of driveways, valley and curb gutters.
- The following requirements must be met in the event a water line and sanitary or storm sewer line cross:
 - A minimum eighteen (18) inch vertical separation (outside to outside) must be maintained when the water line is installed over the sanitary or storm sewer line. If the vertical separation cannot be maintained or the water line must be placed under the sanitary or storm sewer line, the sanitary or storm sewer line must be constructed with one of the following or, as shown on these plans:

- Potable Water supply quality material.
- Encasement, with four (4) inch concrete (minimum) thickness, with potable water supply quality pipe.
- Each provision must extend along the sanitary or storm sewer, on either side of the main, a minimum 10 foot distance perpendicular to the water main exterior.
- Warning tape shall be required over all mains, all six (6) inch diameter and larger service laterals, and any service lateral not installed perpendicular to the main in accordance with Standard Plate No. 27.
- All water facilities shall be filled, disinfected, pressure tested, flushed, filled and an acceptable water sample obtained, prior to connection to the LVVWD's distribution system.
- The contractor must obtain all meters two (2) inches and smaller from LVVWD Central Stores. Telephone 258-3152 forty-eight (48) hours prior to pickup.
- Construction may interrupt service, with LVVWD approval and proper notification, between the hours of 10 PM and 6 AM, Sunday through Thursday. Circumstances may require temporary service fees be installed, without LVVWD reimbursement. Any temporary service feed must have prior LVVWD approval.
- All water facility construction materials used must be as listed on the LVVWD's Pre-Approved Materials and Manufacturers Listing for New Facilities, latest revision, or specifically approved on these plans.



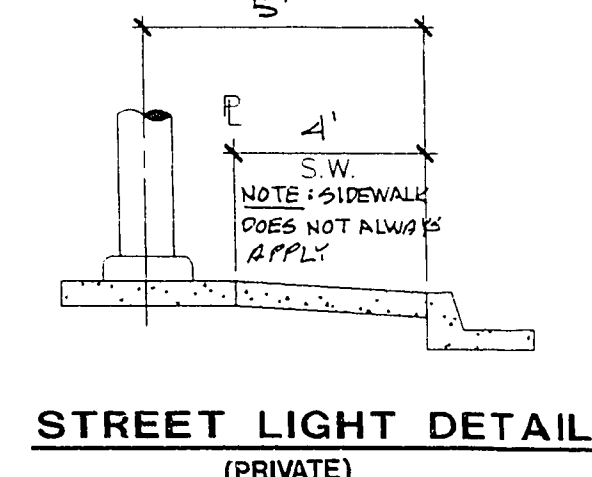
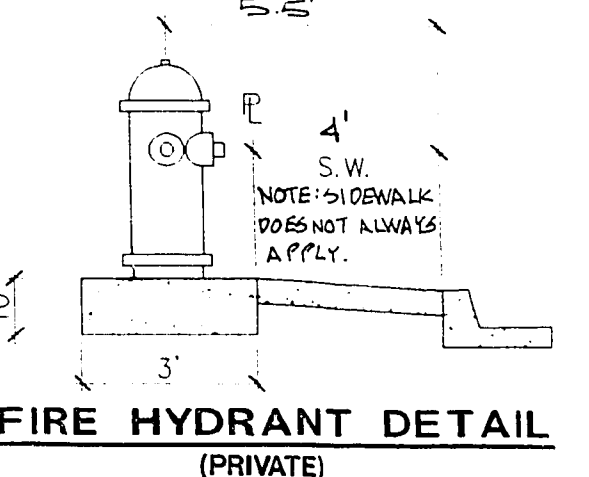
LEGEND & QUANTITY ESTIMATE

	WATER	(PUBLIC)	(PRIVATE)
①	STD. FIRE HYDRANT ASSY.	1 EA	
	8" WATER MAIN	150 LF	
	1" COPPER SERVICE w/3/8" METER (NEW)	28 EA	
	1" COPPER SERVICE w/3/4" METER (LOT 10, BLK. 2)	1 EA	
STREET LIGHT			
	PRIVATE STREET LIGHT (DECORATIVE - NOT BUNDABLE)	19 EA	
	EXIST. STREET LIGHT		1 EA
	STREET NAME SIGN		1 EA
	EXIST. FIRE HYDRANT		1 EA
WYES & LATERALS INSTALLED WITH PREVIOUS UNITS 1, 2 & 3.			
* 1" WATER SERVICE WITH 5/8" METER INSTALLED WITH UNIT 1 & 2.			
		UNIT 2 - LOTS 13 THRU 18, BLK. 4	
		UNIT 1 - LOTS 19 THRU 24, BLK. 4	
		& LOTS 3 THRU 5, BLK. 6	

CLV BM 11000-2899WS
RIVET AND ALUMINUM PLATE IN TOP OF CURB, LONE MOUNTAIN ROAD, 550' EAST OF RANCHO ROAD, SOUTH CURB LINE.
ELEVATION: 2314.32 NAVD 88

BENCHMARK
BM # 0000 2899WS
RIVET AND ALUMINUM PLATE IN TOP OF CURB, SOUTHEAST CORNER OF RANCHO RD. AND LONE MOUNTAIN RD. NEAR THE PC OF RANCHO RD.
ELEVATION = 2319.40

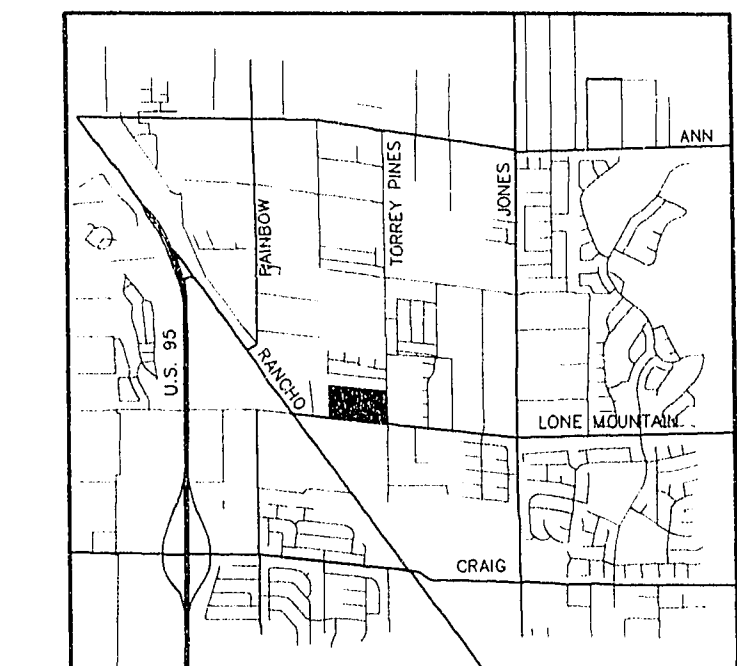
Call before you Dig
1-800-227-2600



APPROVED
5/3/12
LAS VEGAS VALLEY WATER DISTRICT DATE

SEWER CONTRIBUTION
AVERAGE = 0.0110 MGD
PEAK FLOW = 0.0176 MGD

- FIRE DEPARTMENT NOTES**
- ALL WORK SHALL BE DONE IN STRICT ACCORDANCE WITH THE CITY OF LAS VEGAS FIRE DEPARTMENT "HYDRANT SPECIFICATIONS," "HYDRANT INSTALLATION SPECIFICATIONS" AND ORDINANCE #3944.
 - AUTHORIZED HYDRANTS FOR THIS PROJECT ARE:
 - A. KENNEDY GUARDIAN
 - B. MUELLER A-423 CENTURIAN
 - C. CLOW MODEL 2546 MEDALLION
 - ON ANY NEW HOME OR BUILDING INSTALLATION, ACCESSIBLE FIRE HYDRANTS SHALL BE INSTALLED BEFORE COMBUSTIBLE CONSTRUCTION COMMENCES AND SAID FIRE HYDRANTS SHALL BE IN GOOD WORKING ORDER WITH AN ADEQUATE WATER SUPPLY.
 - CONTRACTOR SHALL PLACE A BLUE REFLECTIVE MARKER AT CENTERLINE OF STREET ADJACENT TO FIRE HYDRANT AS REQUIRED IN ORDINANCE #3944 TO IDENTIFY THE FIRE HYDRANT LOCATIONS.
 - CALL THE LAS VEGAS FIRE DEPARTMENT AT 229-2071 FOR UNDERGROUND INSPECTION, PRESSURE AND FLUSH VERIFICATION OF ALL FIRE HYDRANTS AND FIRE LINES BEFORE COVERING.
 - PAINTING OF THE CURBS AND HYDRANTS AND ANY WORK NECESSARY FOR PROTECTION OF HYDRANTS FROM PHYSICAL DAMAGE PER ORDINANCE #3944, SHALL BE COMPLETED BEFORE APPROVAL BY THE CITY OF LAS VEGAS FIRE DEPARTMENT.
 - A PERMIT IS REQUIRED FROM THE FIRE DEPARTMENT FOR ON-SITE WATER LINE AND FIRE HYDRANT. THE PERMIT AND CONTRACTOR'S MATERIAL AND TEST CERTIFICATE FOR UNDERGROUND PIPING FORM SHALL BE OBTAINED FROM THE FIRE PROTECTION ENGINEER PRIOR TO ANY WORK BEGINNING.
 - PRIVATE FIRE HYDRANTS SHALL BE PAINTED RED.
 - A FLOW TEST MUST BE WITNESSED BY THE FIRE DEPARTMENT PRIOR TO OCCUPANCY FOR VERIFICATION OF REQUIRED ON-SITE WATER SUPPLY.
 - ALL ON-SITE FIRE MARK MATERIALS MUST BE UL LISTED AND A.W.W.A. APPROVED.
 - FIRE HYDRANT SPACING:
 - RESIDENTIAL - 500 FEET UNSPRINKLERED, 1,000 FEET SPRINKLERED
 - COMMERCIAL, INCLUDING MULTI-FAMILY - 300 FEET UNSPRINKLERED, 600 FEET SPRINKLERED.
 - WHERE NEW WATER MAINS ARE EXTENDED ALONG STREETS, WHERE HYDRANTS ARE NOT NEEDED FOR PROTECTION OF STRUCTURES, FIRE HYDRANTS SHALL BE SPACED AT MAXIMUM 1,000 FOOT SPACING TO PROVIDE FOR TRANSPORTATION HAZARDS.
 - NO FIRE HYDRANT SHALL BE LOCATED WITHIN THE REQUIRED RADIUS OF A CUL-DE-SAC OR WITHIN 20 FEET OF THE PERIMETER OF THE RADIUS OF THE CUL-DE-SAC.
 - NO FIRE HYDRANT SHALL BE LOCATED WITHIN 6 FEET OF ANY CURB RETURN, DRIVEWAY, POWER POLE, STREET LIGHT OR ANY OTHER OBSTRUCTION.
 - TWO SOURCES OF SUPPLY ARE REQUIRED WHENEVER THERE ARE 4 OR MORE HYDRANTS INSTALLED ON A SINGLE SYSTEM.
 - NO MORE THAN 2 HYDRANTS CAN BE OUT OF SERVICE DUE TO A SINGLE MAIN BREAK.
 - FIRE APPARATUS ACCESS ROADS SHALL HAVE AN UNOBSTRUCTED WIDTH OF NOT LESS THAN 20 FEET PROVIDED NO PARKING IS ALLOWED, NOT LESS THAN 28 FEET IF PARALLEL PARKING IS ALLOWED ON ONE SIDE, AND NOT LESS THAN 36 FEET IF PARALLEL PARKING IS ALLOWED ON BOTH SIDES. VERTICAL CLEARANCE SHALL BE NOT LESS THAN 13 FEET 6 INCHES.
 - THE TURNING RADIUS FOR ANY FIRE APPARATUS ACCESS ROAD AND/OR FIRE LANE, PUBLIC OR PRIVATE, SHALL BE NOT LESS THAN 45 FEET OUTSIDE RADIUS AND 22 FEET INSIDE RADIUS.
 - A FIRE APPARATUS ROAD SHALL BE REQUIRED WHEN ANY PORTION OF AN EXTERIOR WALL OF THE FIRST STORY IS LOCATED MORE THAN 150 FEET FROM A FIRE DEPARTMENT VEHICLE ACCESS (SEE EXCEPTIONS IN UPC 94, SECTION 902.2).
 - ALL DEAD END FIRE APPARATUS ACCESS ROADS AND/OR FIRE LANES, PUBLIC OR PRIVATE, IN EXCESS OF 150 FEET IN LENGTH SHALL BE PROVIDED WITH AN APPROVED TURN AROUND AREA. SEE ORDINANCE #3944.
 - ACCESS ROADS SHALL BE MARKED BY PLACING APPROVED SIGNS AT THE START OF THE DESIGNATED FIRE LANE, ONE SIGN AT THE END OF THE FIRE LANE AND WITH SIGNS AT INTERVALS OF 100 FEET ALONG ALL DESIGNATED FIRE LANES. SIGNS TO BE PLACED ON BOTH SIDES OF AN ACCESS ROADWAY IF NEEDED TO PREVENT PARKING ON EITHER SIDE. SIGNS TO BE INSTALLED NO HIGHER THAN 10 FEET OR LESS THAN 6 FEET FROM ROADWAY LEVEL. THE CURBS ALONG OR ON THE PAVEMENT OR CEMENT IF CURB IS NOT PRESENT, SHALL BE PAINTED WITH A RED WEATHER RESISTANT PAINT IN ADDITION TO THE SIGNS.
 - ELECTRICALLY CONTROLLED ACCESS GATES SHALL BE PROVIDED WITH AN APPROVED EMERGENCY VEHICLE DETECTOR/RECEIVER SYSTEM. SAID SYSTEM SHALL BE INSTALLED IN ACCORDANCE WITH THE CITY OF LAS VEGAS GUIDELINES FOR AUTOMATIC EMERGENCY VEHICLE ACCESS GATES.



AMLAND DEVELOPMENT
CITY OF LAS VEGAS, NEVADA

UTILITY PLAN
MOUNTAIN GATE TOWNHOMES
UNIT 4

DATE: 11/18/09
BY: RPF
REV: 1

APPROPRIATE FIRE HYDRANT SEPARATION NOTE

CONSULTING ENGINEERS • PLANNERS • LAND SURVEYORS
2727 SOUTH RAINBOW BOULEVARD
LAS VEGAS, NEVADA 89102-5148
PHONE (702) 873-7550 FAX (702) 362-2597

VTM nevada

PROJECT NAME: MOUNTAIN GATE TOWNHOMES Unit 4 P3 of 3
This project water plan complies with the Las Vegas Valley Water District's technical requirements. However, this water plan is NOT APPROVED FOR CONSTRUCTION at this time and this engineer does not provide or imply a water commitment.

LAS VEGAS FIRE DEPARTMENT
FIRE FLOW REQUIREMENT IS 2000 GALLONS/MIN. AT 20 LBS./SQ. IN. RESIDUAL.
BASED ON:
SQUARE FOOTAGE: 5792 w/2 HR. FIREWALL
LARGEST AREA BETWEEN SEPARATION WALLS:
HEIGHT:
TYPE OF CONSTRUCTION: S-N
EXPOSURES:
SPRINKLER SYSTEM:
OCCUPANCY:
ROOF CONSTRUCTION:
REVIEWED BY: [Signature]
DATE: 2-23-16
PROVIDE FIRE LANE IDENTIFICATION PER CITY ORD. 3677

SEAL
PROFESSIONAL ENGINEER
STATE OF NEVADA
11-30-09

NO. 4624-4
BY: RPF
DATE: NOV. 1995
SCALE: 1" = 40'
SHEET: 3 OF 3 SHEETS

H:\CAD\LANDEV\4624\MOUNTAIN GATE UNIT 4.dwg 11/18/09 2:28:46 PM Plotted by M.G.B.