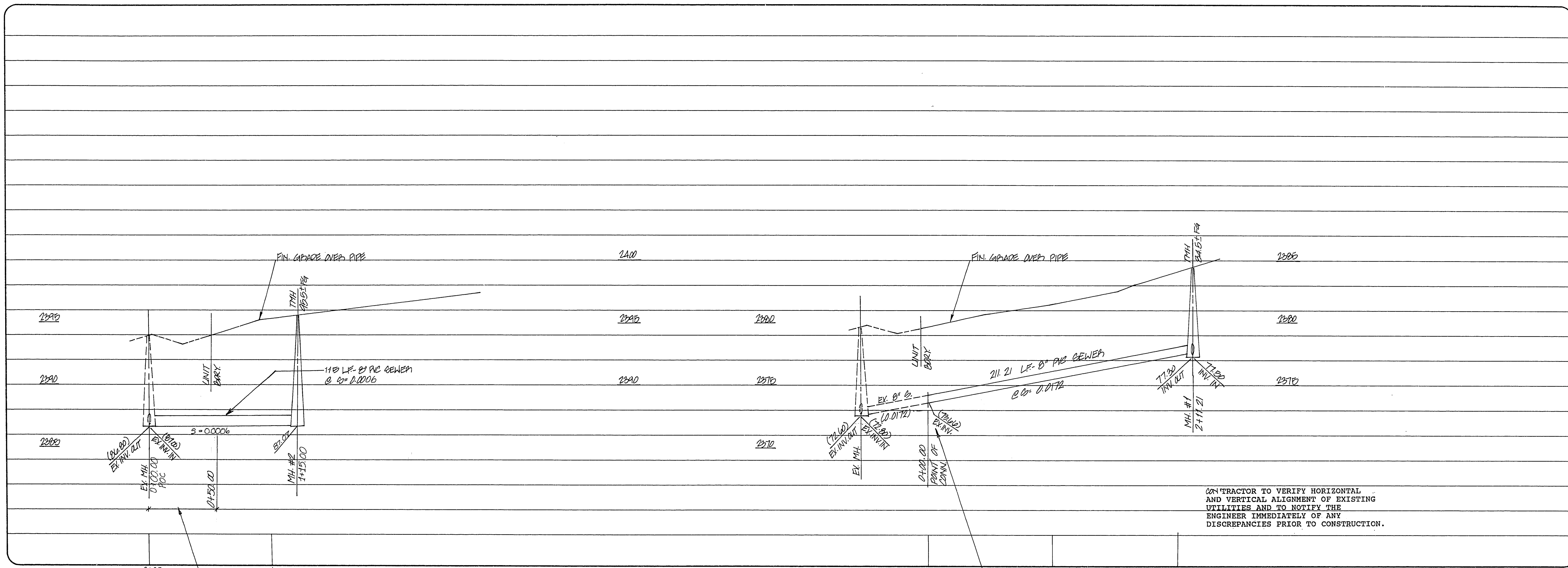
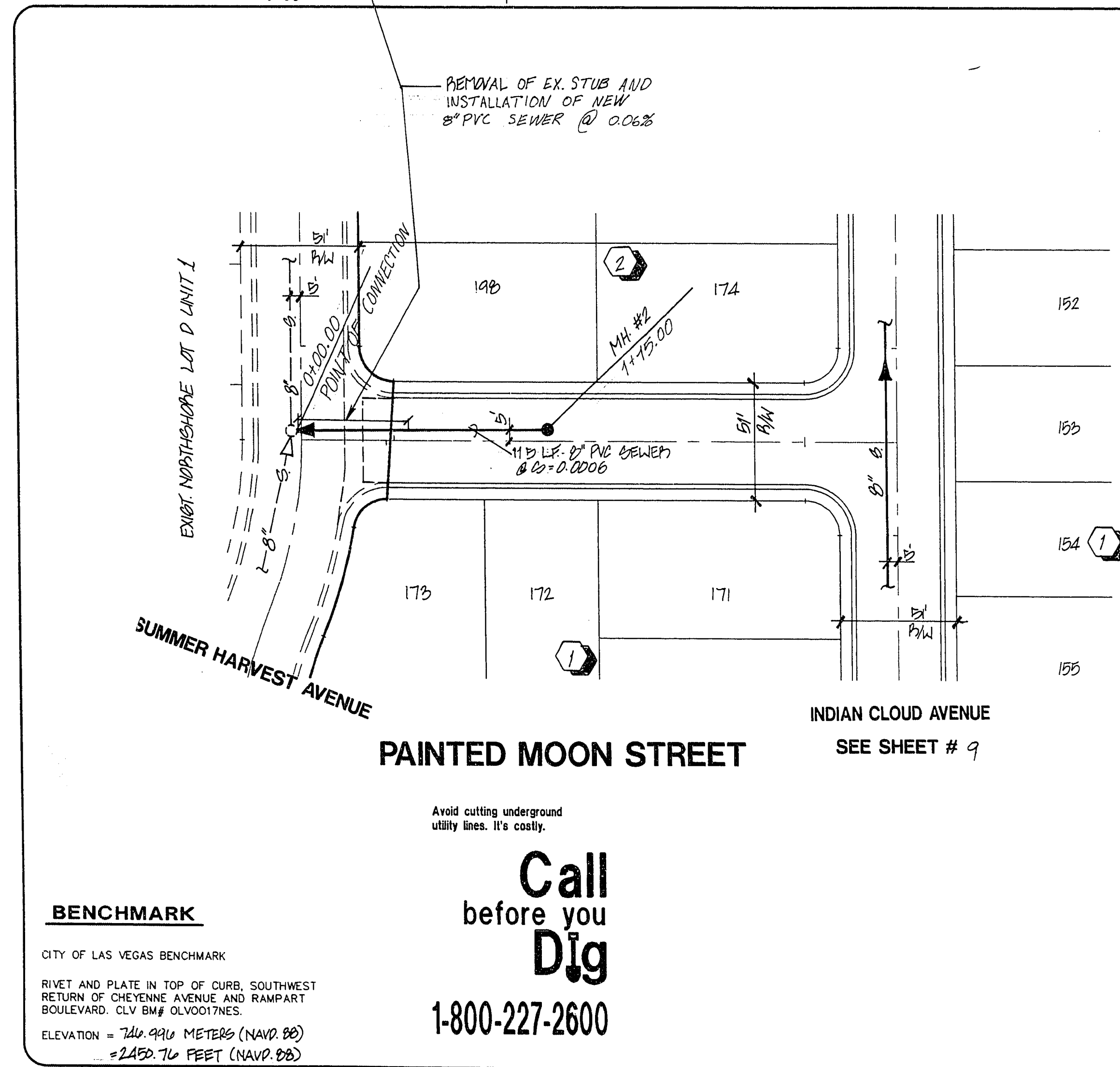


H:\CAD\LAND\4663\4663.DWG MET SEP 6 09:23:30 1995 PLOTTED BY: M.G.B.

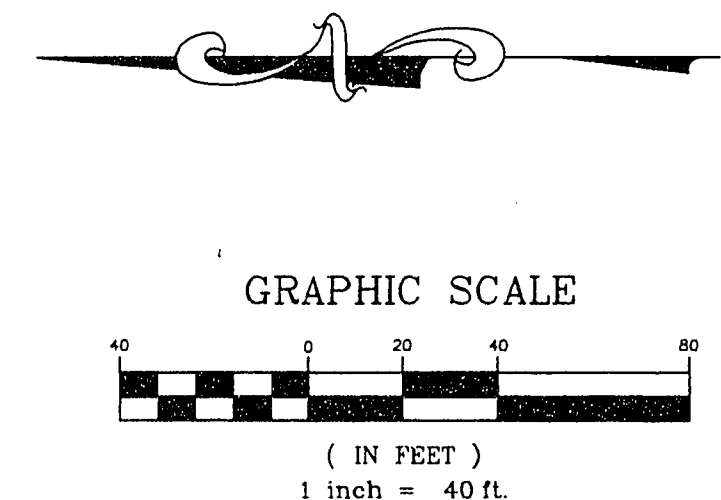
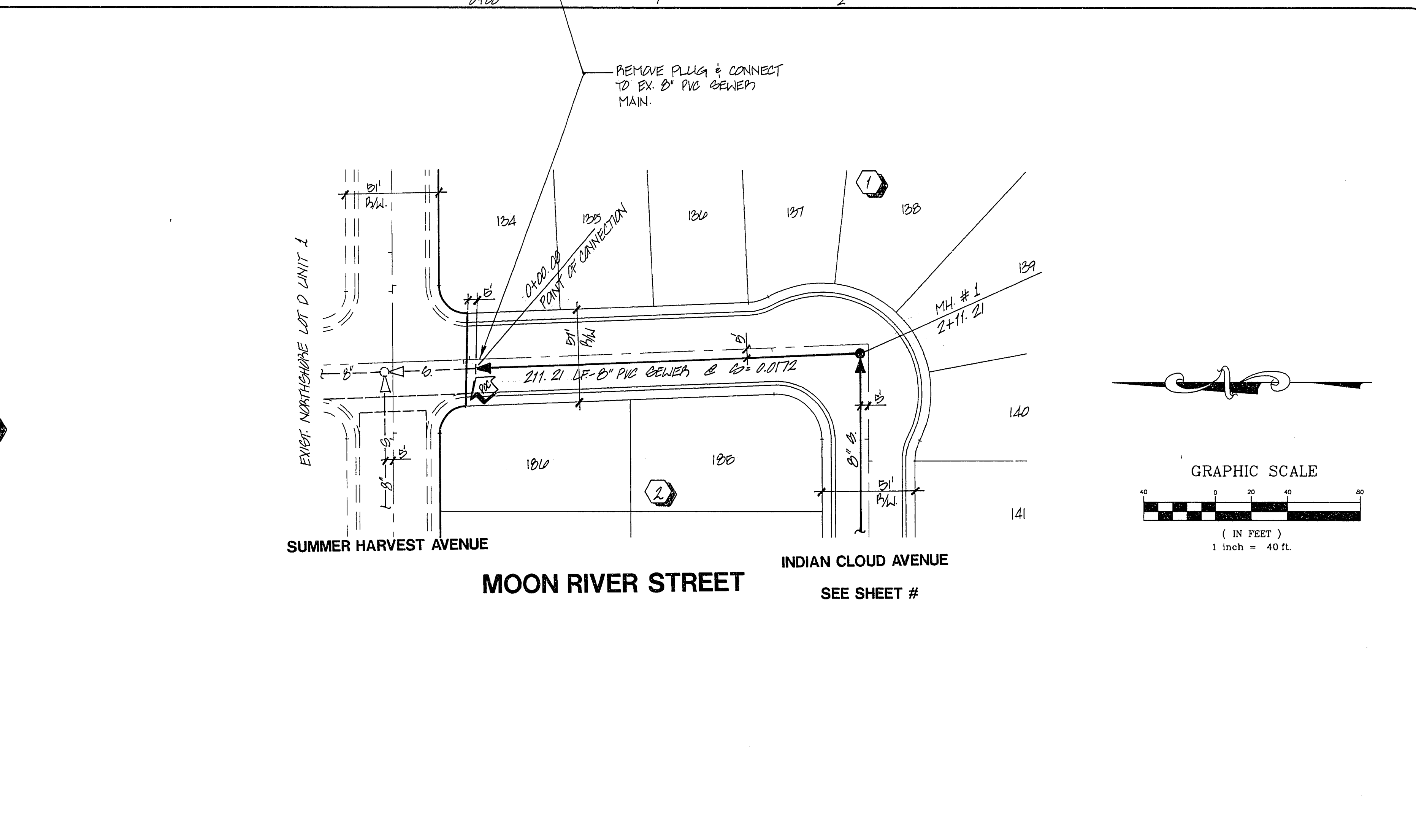


CONTRACTOR TO VERIFY HORIZONTAL AND VERTICAL ALIGNMENT OF EXISTING UTILITIES AND TO NOTIFY THE ENGINEER IMMEDIATELY OF ANY DISCREPANCIES PRIOR TO CONSTRUCTION.



Call before you Dig
1-800-227-2600

BENCHMARK
CITY OF LAS VEGAS BENCHMARK
RIVET AND PLATE IN TOP OF CURB, SOUTHWEST RETURN OF CHEYENNE AVENUE AND RAMPART BOULEVARD. CLV BM # OLVD007NES.
ELEVATION = 746.991 METERS (NAVD. 88)
= 2452.76 FEET (NAVD. 88)



ROYAL CONSTRUCTION 2696 SOUTH RAINBOW BLVD CITY OF LAS VEGAS, NEVADA 89102	873-7773	DATE	BY
CONSULTING ENGINEERS • PLANNERS • LAND SURVEYORS 2727 SOUTH RAINBOW BOULEVARD LAS VEGAS, NEVADA 89102-5148 PHONE (702) 873-7550 FAX (702) 362-2597		REV	REV

SEWER PLAN AND PROFILE
PAINTED MOON STREET MOON RIVER STREET
NORTHSORE - LOT "D"
UNIT 2

PROJECT

16 JAN 96

NO. 4663-2
BY: DH, WJR
DATE: 9/95
SCALE: HORIZ. 1"=40'
VERT. 1"=4'

SHEET 8 OF 9 SHEETS

11-12-94 307Y-4318-D2