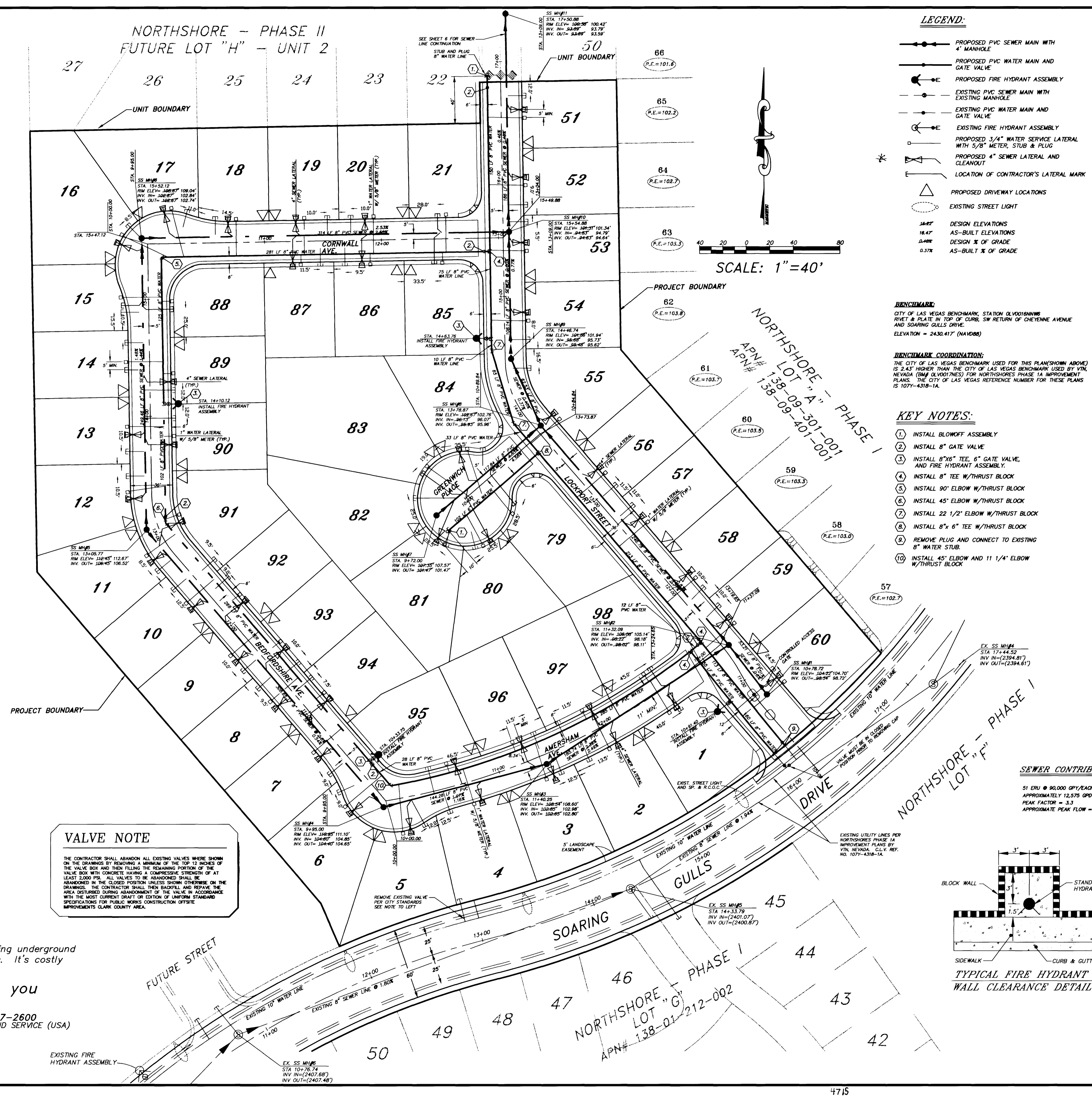


NORTHSHORE - PHASE II  
FUTURE LOT "H" - UNIT 2

NORTHSHORE - PHASE II  
LOT "I"  
APN# 138-09-311-001



- LEGEND:**
- PROPOSED PVC SEWER MAIN WITH 4" MANHOLE
  - PROPOSED PVC WATER MAIN AND GATE VALVE
  - PROPOSED FIRE HYDRANT ASSEMBLY
  - EXISTING PVC SEWER MAIN WITH EXISTING MANHOLE
  - EXISTING PVC WATER MAIN AND GATE VALVE
  - EXISTING FIRE HYDRANT ASSEMBLY
  - PROPOSED 3/4" WATER SERVICE LATERAL WITH 5/8" METER, STUB & PLUG
  - PROPOSED 4" SEWER LATERAL AND CLEANOUT
  - LOCATION OF CONTRACTOR'S LATERAL MARK
  - PROPOSED DRIVEWAY LOCATIONS
  - EXISTING STREET LIGHT
  - DESIGN ELEVATIONS
  - AS-BUILT ELEVATIONS
  - DESIGN % OF GRADE
  - AS-BUILT % OF GRADE

**SEWER QUANTITIES**  
(INCLUDES SHEET 6 QUANTITIES)

8" SEWER LINE	2560 L.F.
4" SEWER SERVICE LATERALS	60 EA.
SEWER MANHOLES	14 EA.

**WATER QUANTITIES**

8" WATER LINE	1875 L.F.
6" WATER LINE	102 L.F.
1" WATER SERVICE LATERALS W/ 5/8" METER	51 EA.
8" GATE VALVES	4 EA.
FIRE HYDRANT ASSEMBLY	3 EA.
8" TEES	3 EA.
BLOWOFF ASSEMBLY	2 EA.
8"x 6" TEE	1 EA.
90° ELBOW	1 EA.
45° ELBOW	2 EA.
22 1/2" ELBOW	2 EA.
11 1/4" ELBOW	1 EA.

- NOTES:**
- HUNSAKER & ASSOCIATES SHALL BE NOTIFIED IMMEDIATELY OF ANY DISCREPANCIES IN THE PLANS OR CONDITIONS IN THE FIELD.
  - ALL UTILITY INSTALLATION SHALL CONFORM TO LAS VEGAS VALLEY WATER DISTRICT STANDARDS AND THE UNIFORM PLUMBING CODE.
  - ALL WORK TO BE PERFORMED OUTSIDE OF THE PROJECT BOUNDARY AND ON PRIVATE PROPERTY SHALL NOT BE PERFORMED UNTIL WRITTEN PERMISSION AND EASEMENT HAVE BEEN OBTAINED FROM THE OFFSITE OWNER.
  - ALL WORK PERFORMED WITHIN THE PUBLIC RIGHT-OF-WAY AND OUTSIDE THE PROJECT BOUNDARY SHALL BE PERFORMED UNDER A SEPARATE ENCROACHMENT PERMIT ISSUED BY THE CONTROLLING AUTHORITY.
  - ALL FIRE HYDRANTS SHALL BE PLACED A MIN. 18" BEHIND BACK OF SIDEWALK.
  - CONTRACTOR SHALL PROVIDE A MINIMUM OF 11 FEET SEPARATION BETWEEN WATER MAIN AND SANITARY SEWER MAIN.
  - PRIOR TO CONSTRUCTION CONTRACTOR SHALL BE RESPONSIBLE FOR VERIFYING ALL EXISTING UTILITY LOCATIONS AND ELEVATIONS AND SHALL CONTACT ENGINEER IF ANY DISCREPANCIES ARE FOUND.
  - FIRE HYDRANT STATIONING REFERENCES TEE LOCATION.
  - ADD 2300' TO ALL ELEVATIONS SHOWN.
  - ALL STREETS WITHIN SUBDIVISION ARE PRIVATE DRIVES, P.U.E.'S AND CITY OF LAS VEGAS SEWER EASEMENTS.
  - A 1" x 3/4" ANGLE METER STOP AND 3/4" METER BOX WILL BE REQUIRED WITH THE 1" SERVICE LATERALS FOR ALL SERVICES WITH 5/8" OR 3/4" SERVICES. DETAILS OF THE ABOVE INSTALLATION ARE AVAILABLE FROM THE ENGINEERING SERVICES DIVISION AND FROM THE DISTRICT'S INSPECTORS.

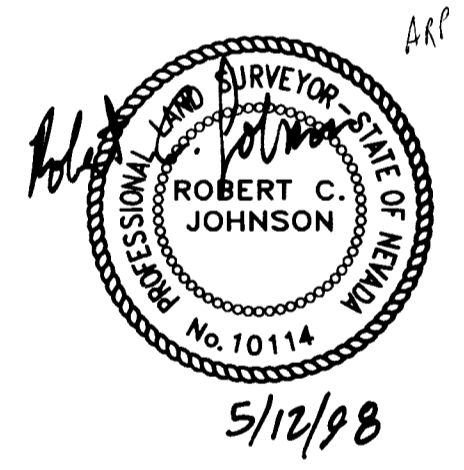
**BENCHMARK:**  
CITY OF LAS VEGAS BENCHMARK, STATION 050030808  
RIVET & PLATE IN TOP OF CURB, SW RETURN OF CHEYENNE AVENUE AND SOARING GULLS DRIVE.  
ELEVATION = 2430.417' (NAVD88)

**BENCHMARK COORDINATION:**  
THE CITY OF LAS VEGAS BENCHMARK USED FOR THIS PLAN (SHOWN ABOVE) IS 2.43' HIGHER THAN THE CITY OF LAS VEGAS BENCHMARK USED BY VIN, NEVADA (BM & HYD) FOR NORTHSHORE PHASE I IMPROVEMENT PLANS. THE CITY OF LAS VEGAS REFERENCE NUMBER FOR THESE PLANS IS 1077-4318-1A.

- KEY NOTES:**
- INSTALL BLOWOFF ASSEMBLY
  - INSTALL 8" GATE VALVE
  - INSTALL 8"x 6" TEE, 6" GATE VALVE, AND FIRE HYDRANT ASSEMBLY
  - INSTALL 8" TEE W/THRUST BLOCK
  - INSTALL 90° ELBOW W/THRUST BLOCK
  - INSTALL 45° ELBOW W/THRUST BLOCK
  - INSTALL 22 1/2" ELBOW W/THRUST BLOCK
  - INSTALL 8"x 6" TEE W/THRUST BLOCK
  - REMOVE PLUG AND CONNECT TO EXISTING 8" WATER STUB.
  - INSTALL 45° ELBOW AND 11 1/4" ELBOW W/THRUST BLOCK

**AS-BUILTS NOTES:**

THE DISTANCES SHOWN FROM THE LOT LINES TO THE SEWER LATERALS WERE MEASURED IN THE FIELD FROM LOT CORNER SCRIBES TO THE POINT WHERE THE UNDERGROUND CONTRACTOR MARKED THE SEWER LATERAL LOCATION ON THE CURB. NO ATTEMPT HAS BEEN MADE TO VERIFY THE CONTRACTOR'S MARKS. HUNSAKER AND ASSOCIATES ASSUMES NO RESPONSIBILITY FOR THE ACCURACY OF SAID MARKS. THE INVERT AND RIM ELEVATIONS OF THE MANHOLES WERE DETERMINED BY A FIELD SURVEY.



**VALVE NOTE**

THE CONTRACTOR SHALL ABANDON ALL EXISTING VALVES WHERE SHOWN ON THE DRAWINGS BY REMOVING A MINIMUM OF THE TOP 12 INCHES OF THE VALVE BOX AND THEN FILLING THE REMAINING PORTION OF THE VALVE BOX WITH CONCRETE HAVING A COMPRESSIVE STRENGTH OF AT LEAST 2,000 PSI. ALL VALVES TO BE ABANDONED SHALL BE ABANDONED IN THE CLOSED POSITION UNLESS SHOWN OTHERWISE ON THE DRAWINGS. THE CONTRACTOR SHALL THEN BACKFILL AND REPAVE THE AREA DISTURBED DURING ABANDONMENT OF THE VALVE IN ACCORDANCE WITH THE MOST CURRENT DRAFT OR EDITION OF UNIFORM STANDARD SPECIFICATIONS FOR PUBLIC WORKS CONSTRUCTION OFFSITE.

REMOVE EXISTING VALVE PER CITY STANDARDS SEE NOTE TO LEFT

**SEWER VICINITY MAP**  
NO SCALE

**FIRE DEPARTMENT NOTES:**

FIRE FLOW REQUIREMENT IS 1500 GALLONS PER MINUTE AT 20 POUNDS PER SQUARE INCH RESIDUAL

BASED ON:

SQUARE FOOTAGE 1700 - 2400 SF

LARGEST AREA BETWEEN SEPARATION WALLS N/A

HEIGHT TWO-STORY 28' MAX HEIGHT

TYPE OF CONSTRUCTION TYPE V-N

EXPOSURES N/A

SPRINKLER SYSTEM N/A

OCCUPANCY RESIDENTIAL

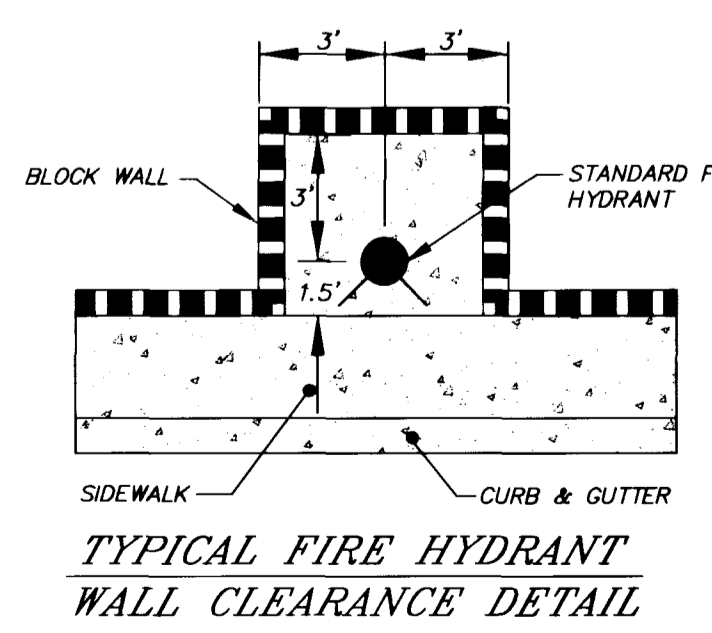
ROOF CONSTRUCTION STANDARD TILE ROOFING

REVIEWED BY \_\_\_\_\_

DATE \_\_\_\_\_

**SEWER CONTRIBUTION**

51 ERU @ 90,000 GPD/EACH  
APPROXIMATELY 12,575 GPD TOTAL  
PEAK FACTOR = 3.3  
APPROXIMATE PEAK FLOW = 41,899 GPD



**APPROVALS:**

CLV FIRE DEPARTMENT \_\_\_\_\_ DATE \_\_\_\_\_

L.V.V.W.D \_\_\_\_\_ DATE \_\_\_\_\_

Avoid cutting underground utility lines. It's costly  
Call before you Dig  
1-800-227-2600  
UNDERGROUND SERVICE (USA)

PREPARED BY: Hunsaker Planning & Engineering - Surveying  
Hunsaker Associates  
Irvine • San Bernardino • San Diego • Las Vegas  
NEVADA

NORTHSHORE - PHASE II  
LOT "H" UNIT 1  
LAS VEGAS

SEWER AS-BUILTS

SCALE(H): 1" = 40'  
SCALE(V): 1" = \_\_\_\_\_  
DES. BY: R.C.J.  
DWN. BY: LLC  
DATE: 5/98  
PROJECT NO. 1221-17  
SHEET 1 OF 1

