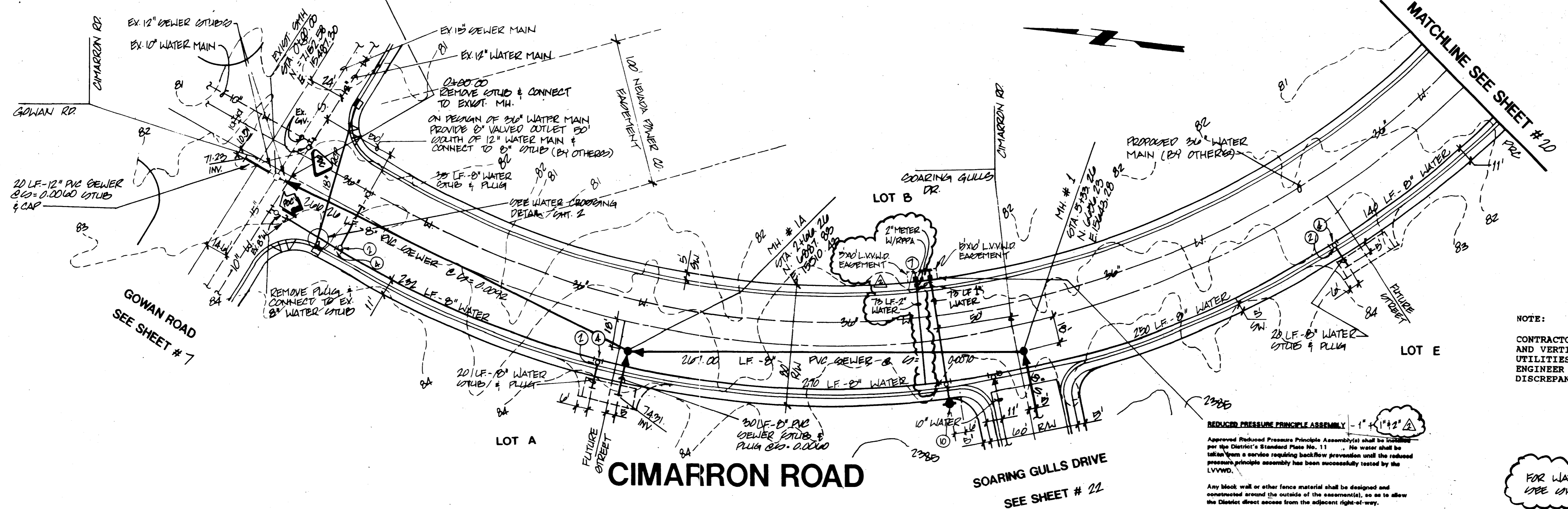


| | | | |
|-------|---------|-----|--|
| NO. 1 | DATE | BY | REVISION |
| 1 | 7/21/94 | WJR | ADD 2" GROUND METER PER CLIENT REQUEST |
| 2 | 5/11/94 | WJR | REV PER COMMENTS |

NORTHWEST PARTNERS
CITY OF LAS VEGAS, NEVADA

CONSULTING ENGINEERS • PLANNERS • LAND SURVEYORS
2727 SOUTH RAINBOW BOULEVARD
LAS VEGAS, NEVADA 89102-5148 PHONE (702) 873-7550 FAX (702) 362-2597

vtm nevada



NOTE:
CONTRACTOR TO VERIFY HORIZONTAL AND VERTICAL ALIGNMENT OF EXISTING UTILITIES AND TO NOTIFY THE ENGINEER IMMEDIATELY OF ANY DISCREPANCIES PRIOR TO CONSTRUCTION.

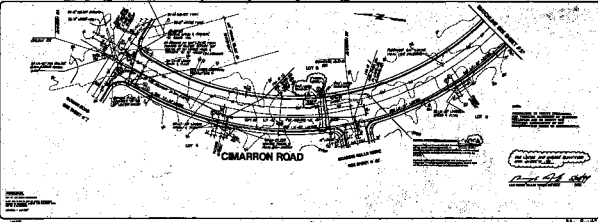
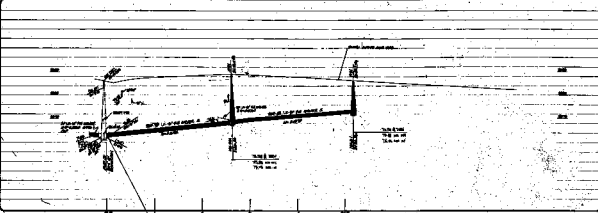
FOR WATER AND SEWER QUANTITIES SEE SHEET # 18

[Signature] 5/15/94
LAS VEGAS VALLEY WATER DISTRICT DATE

BENCHMARK
CITY OF LAS VEGAS BENCHMARK
RIVET AND PLATE IN TOP OF CURB, SOUTHWEST
RETURN OF CHEYENNE AVENUE AND RAMPART BLVD.
CLV BM # 010017N5
ELEVATION = 2448.333'

| | |
|---------|--|
| TITLE | SEWER AS-BUILTS |
| PROJECT | CIMARRON ROAD NORTHSORE PHASE 1A |
| SEAL | |
| NO. NO. | 4438 |
| BY | JM, WJR |
| DATE | 12/93 |
| SCALE | HORIZ 1"=40' VERT. 1"=2' |
| SHEET | 21 OF 25 SHEETS |

APPROVED RECORD
 VTM
 CONSULT THE ENGINEER FOR ALL DIMENSIONS & LINE LOCATIONS
 LOT CORNER MARKS SET AND 1/4" OVER THE CORNER MARKS



-SEWER AS SHOWN
 CHAMPION ROAD
 NORTHSHORE
 PHASE 1A

21