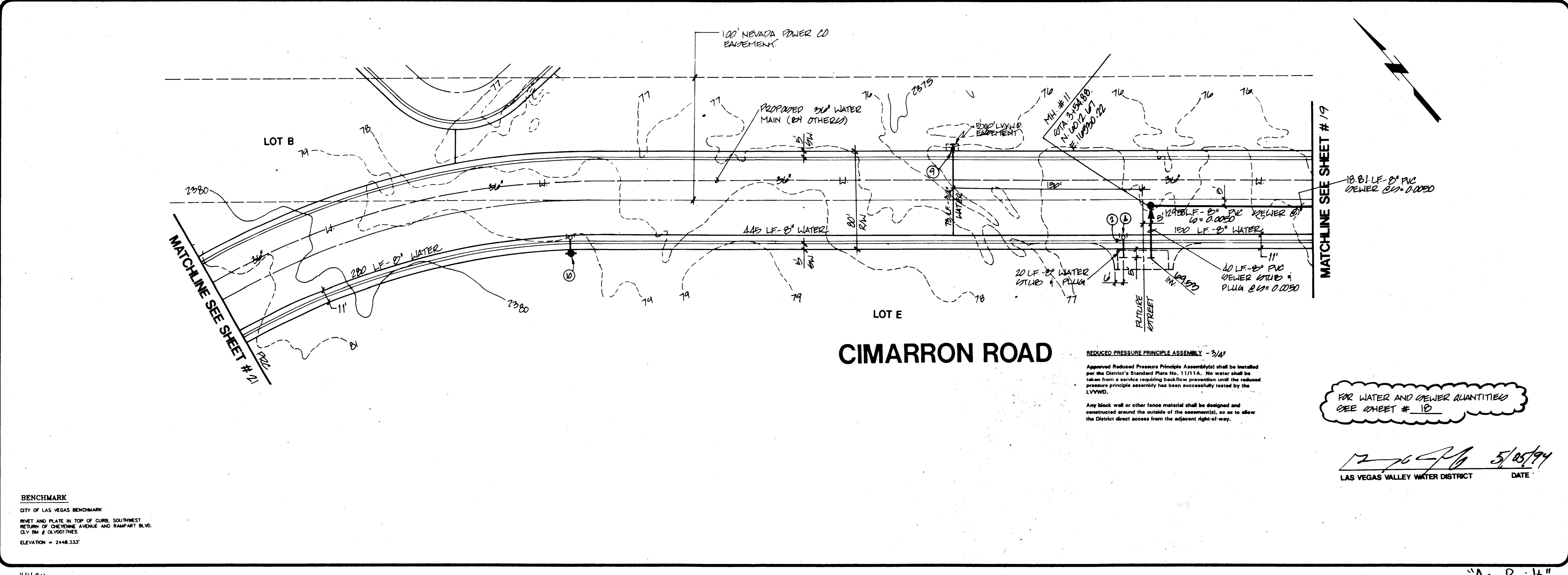


NORTHWEST PARTNERS  
 CITY OF LAS VEGAS, NEVADA

CONSULTING ENGINEERS • PLANNERS • LAND SURVEYORS  
 2727 SOUTH RAINBOW BOULEVARD  
 LAS VEGAS, NEVADA 89102-5148 PHONE (702) 873-7550 FAX (702) 362-2597

vtm nevada

REV	DATE	BY	COMMENTS
1	5/11/94	WJR	PER CU COMMENTS



SEWER AS-BUILTS  
 CIMARRON ROAD  
 NORTHSHORE  
 PHASE 1A

TITLE PROJECT

SEAL

NO. 4430  
 BY JTM, WJR  
 DATE 12/1993  
 SCALE HORIZ. 1"=40'  
 VERT. 1"=4'  
 SHEET 20 OF 25 SHEETS

**BENCHMARK**  
 CITY OF LAS VEGAS BENCHMARK  
 NINET AND PLATE IN TOP OF CURB, SOUTHWEST  
 RETURN OF CHEYENNE AVENUE AND RAMPART BLVD.  
 CLV BM # 0LV0017NES  
 ELEVATION = 2448.333'

**REDUCED PRESSURE PRINCIPLE ASSEMBLY - 3/4"**  
 Approved Reduced Pressure Principle Assembly shall be installed per the District's Standard Plate No. 11711A. No water shall be taken from a service requiring backflow prevention until the reduced pressure principle assembly has been successfully tested by the LVVWD.  
 Any block wall or other fence material shall be designed and constructed around the outside of the assembly, so as to allow the District direct access from the adjacent right-of-way.

FOR WATER AND SEWER QUANTITIES  
 SEE SHEET # 10

12/16/93 5/05/94  
 LAS VEGAS VALLEY WATER DISTRICT DATE

