

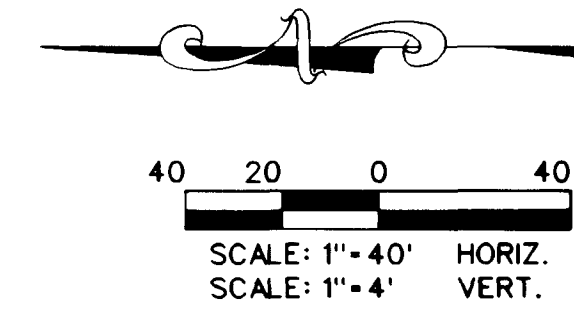
Call before you Dig
1-800-227-2600

Call before you Overhead
1-702-593-6111

BC CURVE DATA

NO.	RADIUS	DELTA	LENGTH	TANGENT
1	100.00'	20°58'08"	36.60'	18.51'
2	51.00'	131°56'16"	117.44'	114.38'
3	100.00'	20°58'08"	36.60'	18.51'
4	30.00'	90°00'00"	47.12'	30.00'

- SEWER CONSTRUCTION NOTES**
- 1. INSTALL 8" PVC SANITARY SEWER LINE
 - 2. INSTALL 48" SANITARY SEWER MANHOLE PER DESIGN AND CONSTRUCTION STANDARDS FOR WASTEWATER COLLECTION SYSTEMS PLATE S0-1
 - 3. INSTALL 8" CAP

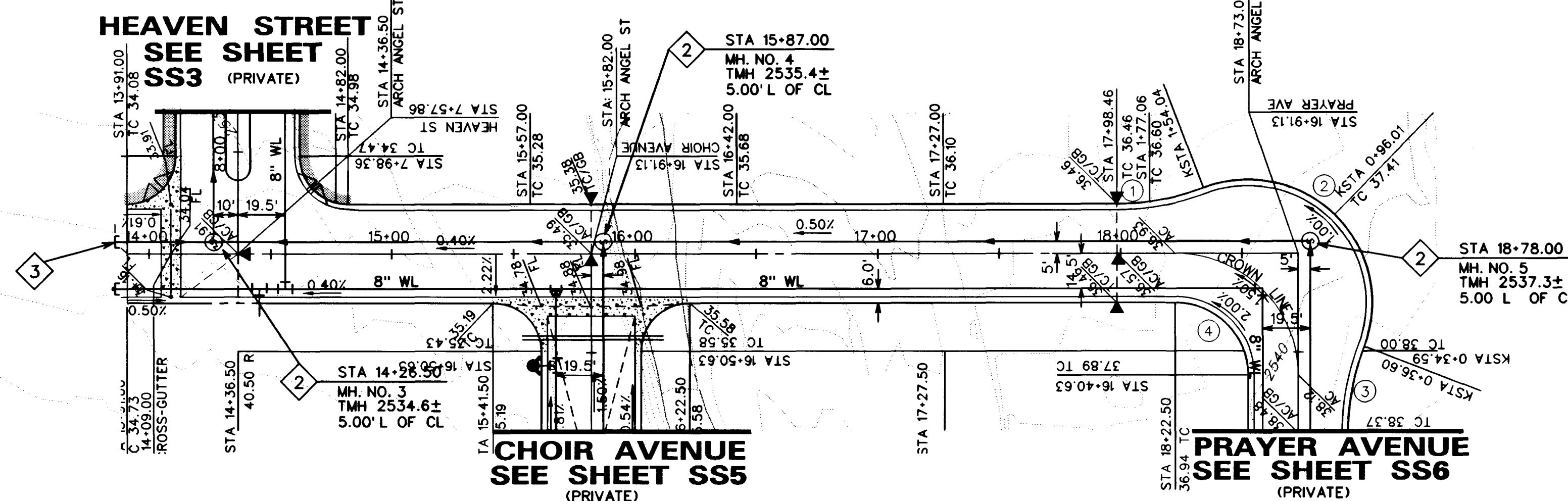
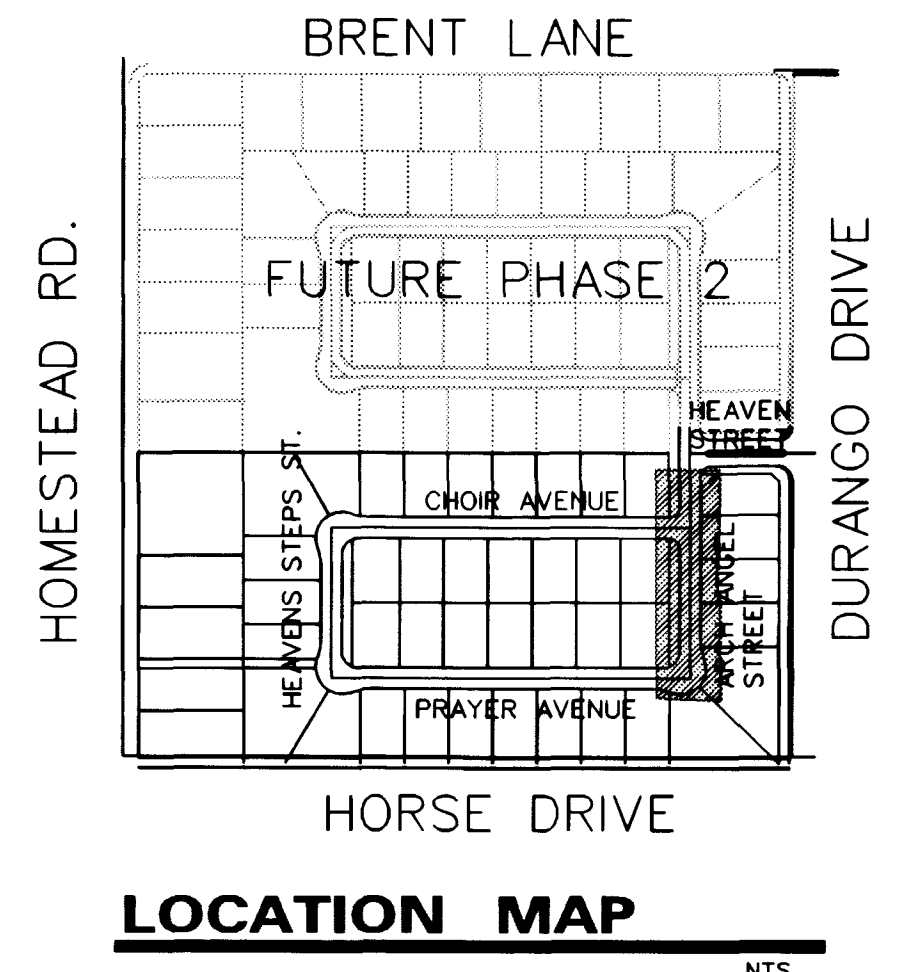


BASIS OF BEARING

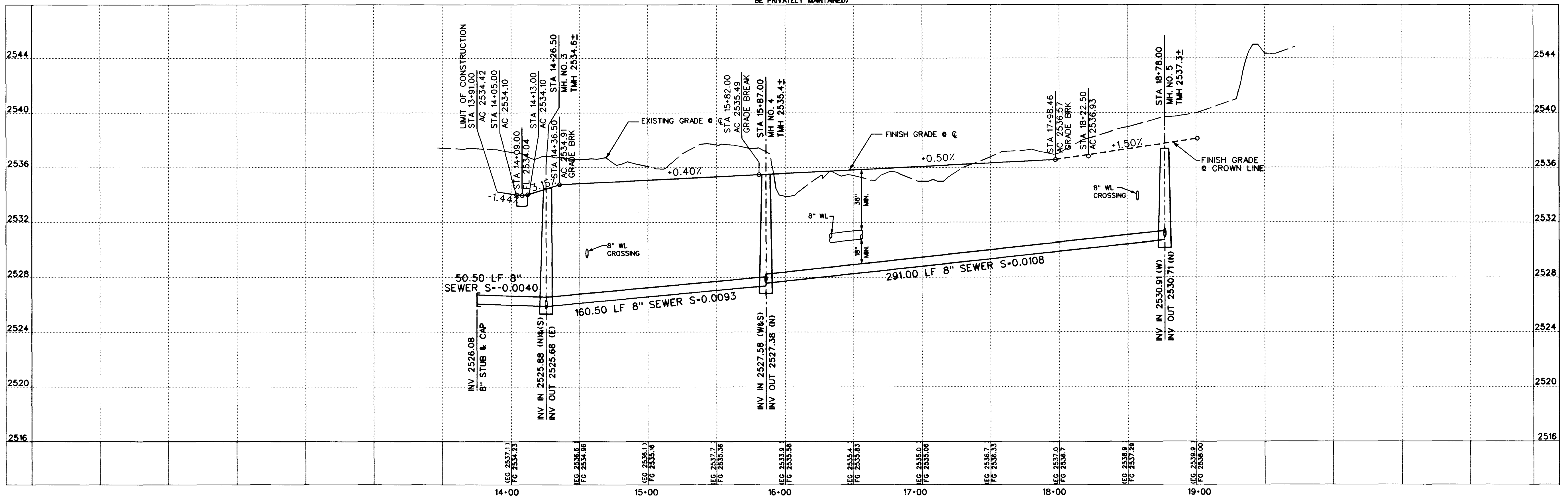
NORTH 0015'13" EAST BEING THE BEARING OF THE EAST LINE OF THE NORTHEAST QUARTER (NE 1/4) OF THE NORTHEAST QUARTER (NE 1/4) OF THE NORTHEAST QUARTER (NE 1/4) OF SECTION 8, TOWNSHIP 19 SOUTH, RANGE 60 EAST, M.D.M. CLARK COUNTY, NEVADA AS SHOWN ON THE MAP IN FILE 87 OF SURVEYS, PAGE 83, OFFICIAL RECORDS OF CLARK COUNTY, NEVADA.

BENCHMARK

C.L.V. BENCHMARK: 1LV90-BNES
BLM BRASS CAP AT THE INTERSECTION OF DURANGO DRIVE AND IRON MOUNTAIN ROAD
NAVD 1988 ELEV 771.9689 METERS (2532.70 FEET)



ARCH ANGEL STREET
(PRIVATE DRIVE)
(P.U.E. & CLV SEWER EASEMENT, PUBLIC DRAINAGE EASEMENT TO BE PRIVATELY MAINTAINED)



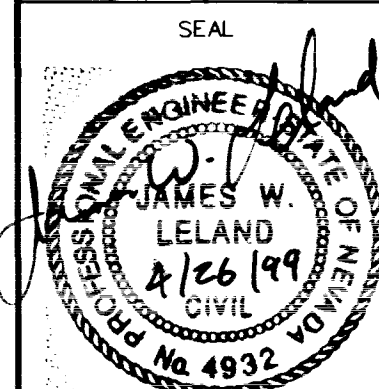
RICHMOND AMERICAN HOMES OF NEVADA INC.
7500 WEST PEAK, STE. 212
LAS VEGAS, NV 89128
(702) 400-0000

CONSULTANTS, INC.
6280 S. Valley View Blvd.
Suite 200
Las Vegas, NV 89118
Tel: (702) 368-3008
Fax: (702) 368-0047

PLAN AND PROFILE
ARCH ANGEL STREET
STA 13+86 TO 18+73

MYSTIC VALLEY
PHASE I

DRAWN BY: S. HOWELL, W. KIM 11/4/98
DESIGNED BY: E. SERRANO, M. BELEN 11/4/98
CHECKED BY: J. W. LELAND 4/26/99
PROJECT NO: 98-9031-03
SCALE: 1"=40' HORIZ.
1"=4' VERT.



SHEET
SS4
14 OF 18 SHEETS
DRAWING NO.
107Y-4599-1

REV DATE BY

DATE

DATE

