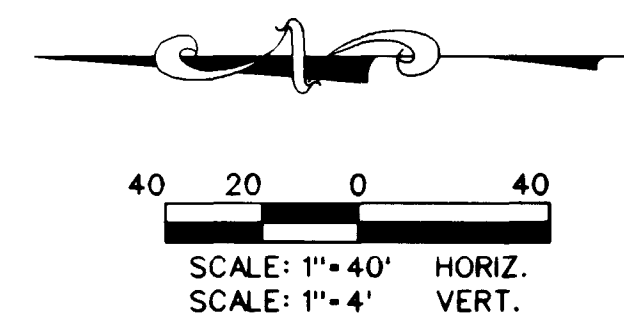
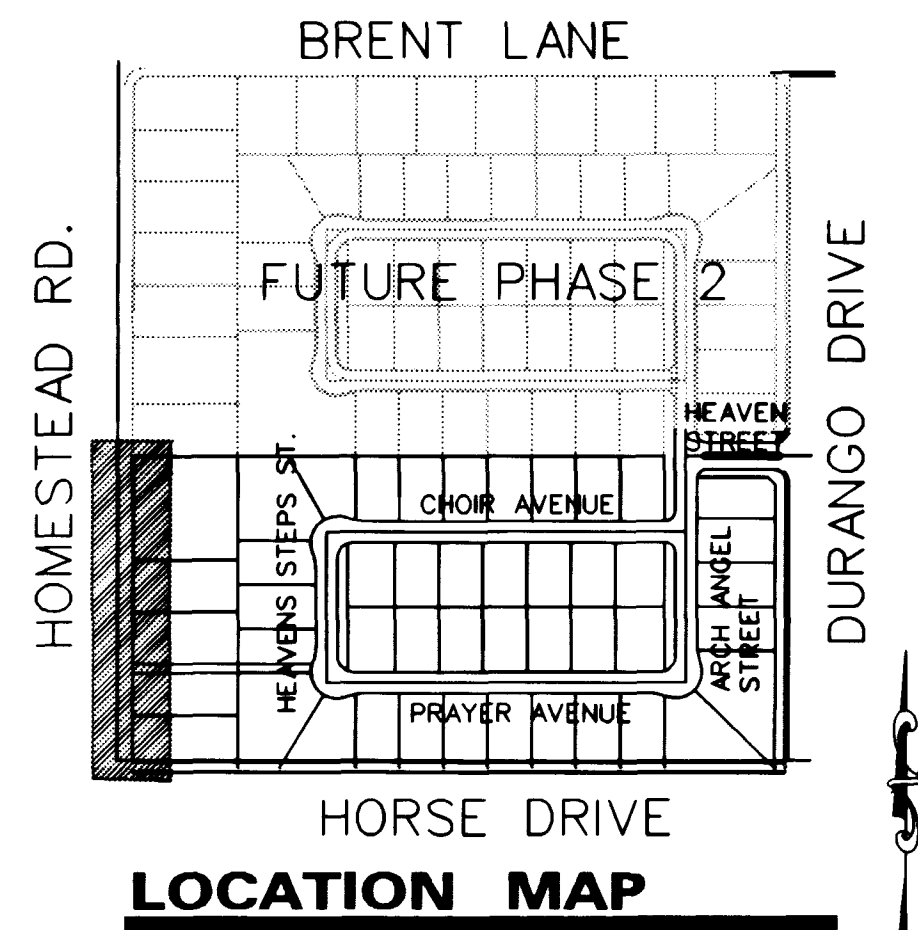


Avoid cutting underground utility lines. It's costly.  
**Call before you Dig**  
 1-800-227-2600

Avoid cutting underground utility lines. It's costly.  
**Call before you Overhead**  
 1-702-593-6111

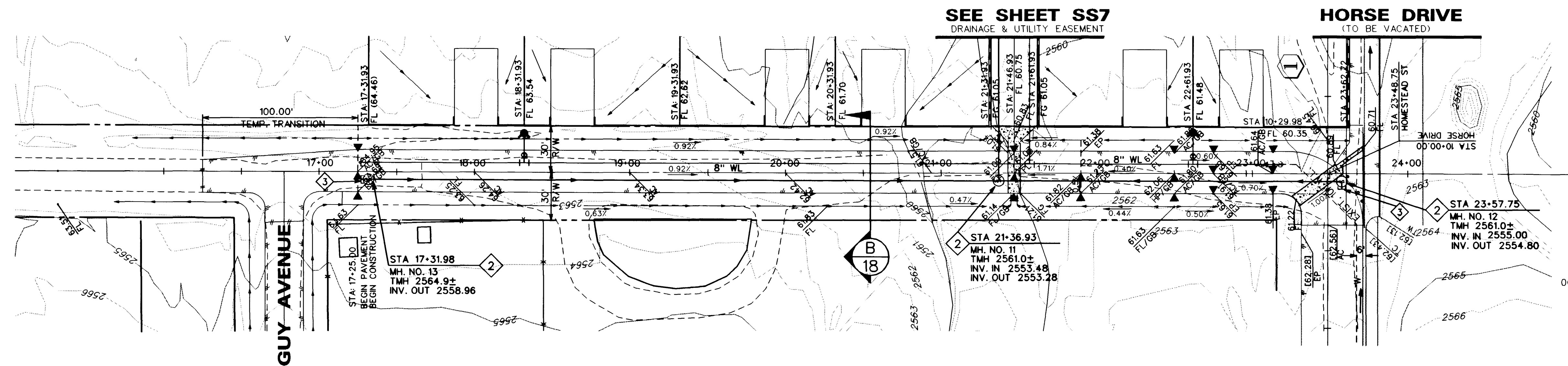
**SEWER CONSTRUCTION NOTES**

- ① INSTALL 8" PVC SANITARY SEWER LINE
- ② INSTALL 48" SANITARY SEWER MANHOLE PER DESIGN AND CONSTRUCTION STANDARDS FOR WASTEWATER COLLECTION SYSTEMS PLATE SD-1
- ③ INSTALL 8" CAP AND 5 LF 8" PVC STUB

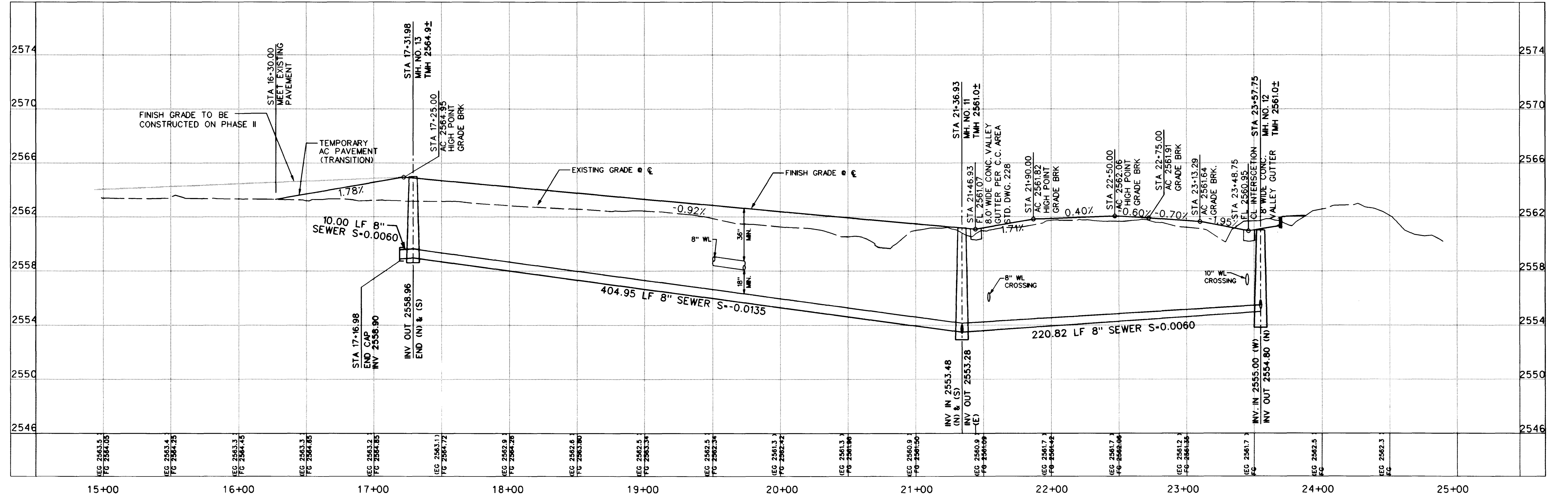


**BASIS OF BEARING**  
 NORTH 0015°13' EAST, BEING THE BEARING OF THE EAST LINE OF THE NORTHEAST QUARTER (NE 1/4) OF THE NORTHEAST QUARTER (NE 1/4) OF SECTION 8, TOWNSHIP 19 SOUTH, RANGE 80 EAST, M.D.M. CLARK COUNTY, NEVADA AS SHOWN ON THE MAP IN FILE 87 OF SURVEYS, PAGE 83, OFFICIAL RECORDS OF CLARK COUNTY, NEVADA.

**BENCHMARK**  
 C.L.V. BENCHMARK: 1LV90-BNES  
 BLM BRASS CAP AT THE INTERSECTION OF DURANGO DRIVE AND IRON MOUNTAIN ROAD  
 NAVD 1988 ELEV 771.9689 METERS (2532.70 FEET)



**HOMESTEAD STREET (PUBLIC)**



**RICHMOND AMERICAN HOMES OF NEVADA INC.**  
 7260 WEST PEAK STE. 212  
 LAS VEGAS, NV 89128  
 (702) 240-8800

**MYSTIC VALLEY PHASE I**  
 PLAN AND PROFILE  
 HOMESTEAD STREET  
 STA 17+00 TO 24+00.00

SHEET 11/4/98  
 DESIGNED BY: E. SERRANO, M. BELEN  
 CHECKED BY: J. W. LELAND  
 PROJECT NO.: 98-9031-03

SCALE: 1"=40' HORIZ.  
 1"=4' VERT.

DATE: 11/4/98  
 BY: J. W. LELAND

SEAL  
**JAMES W. LELAND**  
 PROFESSIONAL ENGINEER  
 STATE OF NEVADA  
 No. 4932

SHEET 12 OF 18 SHEETS  
 DRAWING NO. 1074-4599-1

