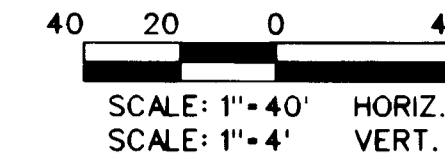


Avoid cutting underground utility lines. It's costly.
 Call before you Dig
 1-800-227-2600

Avoid cutting underground utility lines. It's costly.
 Call before you Overhead
 1-702-593-6111

SEWER CONSTRUCTION NOTES

- 1. INSTALL 8" PVC SANITARY SEWER LINE
- 2. INSTALL 48" SANITARY SEWER MANHOLE PER DESIGN AND CONSTRUCTION STANDARDS FOR WASTEWATER COLLECTION SYSTEMS PLATE SD-1
- 3. INSTALL 8" CAP

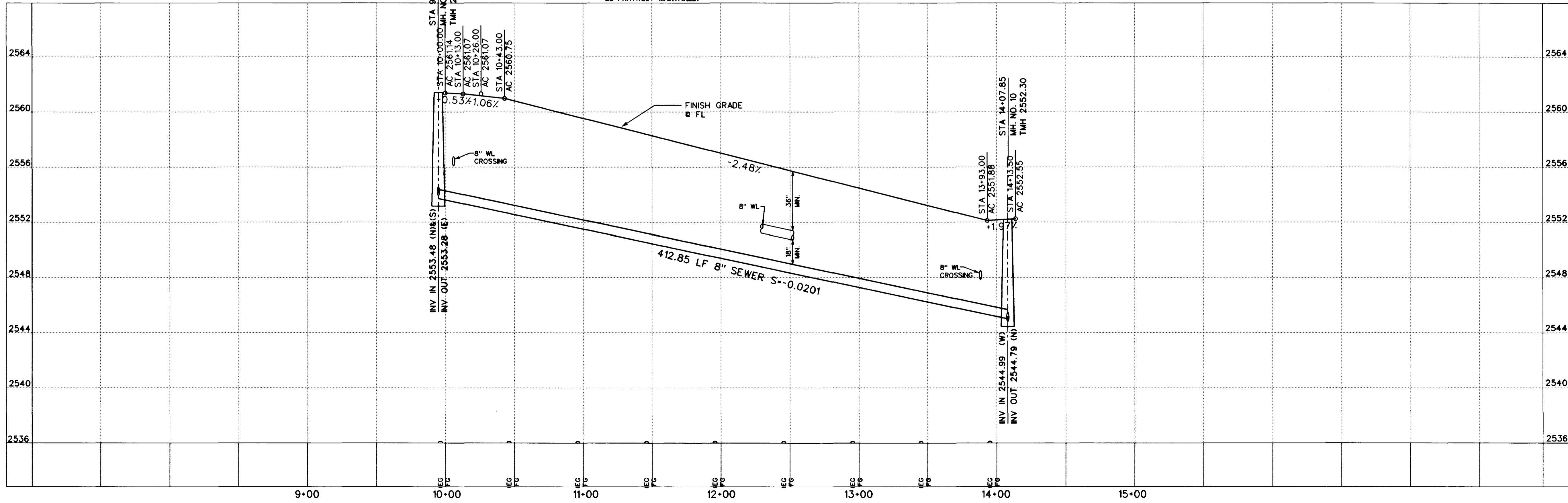
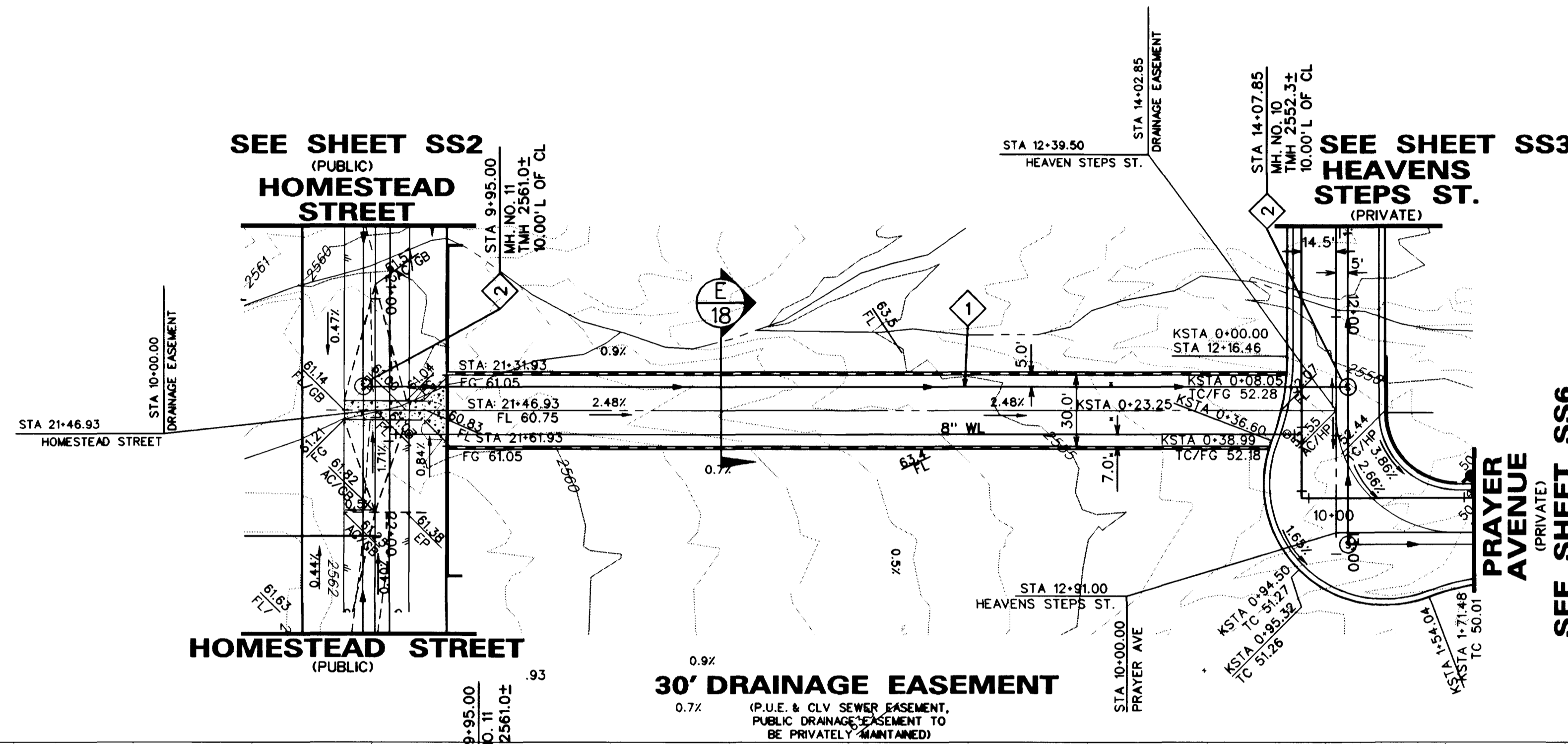
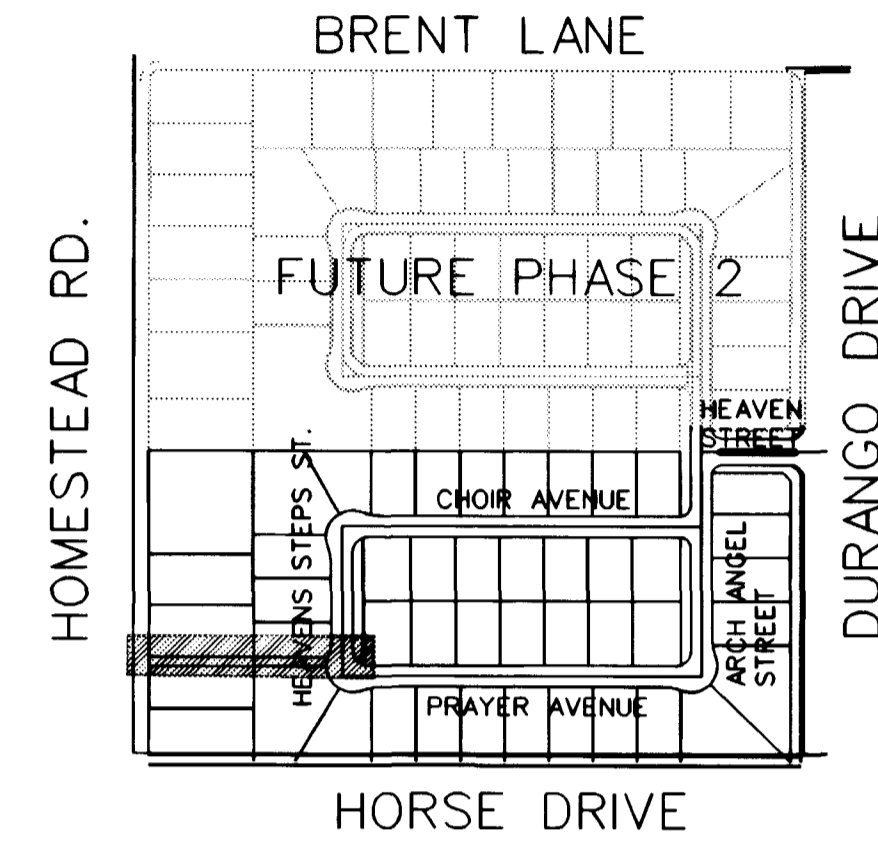


BASIS OF BEARING

NORTH 0015'13" EAST, BEING THE BEARING OF THE EAST LINE OF THE NORTHEAST QUARTER (NE 1/4) OF THE NORTHEAST QUARTER (NE 1/4) OF THE NORTHEAST QUARTER (NE 1/4) OF SECTION 8, TOWNSHIP 19 SOUTH, RANGE 60 EAST, M.D.M. CLARK COUNTY, NEVADA AS SHOWN ON THE MAP IN FILE 87 OF SURVEYS, PAGE 83, OFFICIAL RECORDS OF CLARK COUNTY, NEVADA.

BENCHMARK

CL.V. BENCHMARK: 1LV90-SNES
 BLM BRASS CAP AT THE INTERSECTION OF DURANGO DRIVE AND IRON MOUNTAIN ROAD
 NAVD 1988 ELEV 771.9689 METERS (2532.70 FEET)



RICHMOND AMERICAN HOMES OF NEVADA INC.
 7560 WEST PEAK STE 212
 LAS VEGAS, NV 89128
 (702) 240-5600

PLAN AND PROFILE DRAINAGE EASEMENT STA 10+05 TO 12+29.50

MYSTIC VALLEY PHASE I

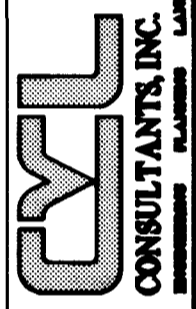
DRAWN BY: C. HOWELL, W. KIM 11/4/98
 DESIGNED BY: E. SERRANO, M. BELEN 11/4/98
 CHECKED BY: J. W. LELAND 4/26/99
 PROJECT NO: 98-9031-03
 SCALE: 1"=40' HORIZ. 1"=4' VERT.

SEAL
 PROFESSIONAL ENGINEER
 JAMES W. LELAND
 CIVIL
 No. 4832
 STATE OF NEVADA

SHEET SS7
 17 OF 18 SHEETS
 DRAWING NO. 1074-4599-1

REV. DATE BY

6280 S. Valley View Blvd.
 Suite 200
 Las Vegas, NV 89118
 Tel: (702) 368-5008
 Fax: (702) 368-0047



DATE: 11/4/98

BY: J.W. LELAND

DATE: 4/26/99

BY: J.W. LELAND

DATE: 11/4/98

BY: J.W. LELAND

Call before
you Dig
1-800-227-2600

Call before
you Overhead
1-702-583-68

WORK CONSTRUCTION NOTES

- SHALL BE INSTALLED AS SHOWN
- SHALL BE INSTALLED AS SHOWN
- SHALL BE

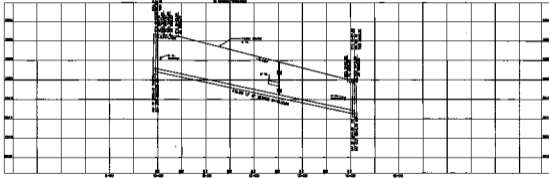
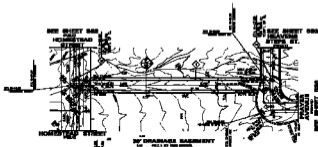


BASE OF BEARING

THE NORTH POINT OF THE CORNER OF THE INTERSECTION OF THE CENTER LINE OF THE HIGHWAY AND THE CENTER LINE OF THE RAILROAD SHALL BE THE POINT OF BEGINNING OF THE BEARING.

BENCHMARK

A BENCHMARK WAS FOUND AT THE CORNER OF THE INTERSECTION OF THE CENTER LINE OF THE HIGHWAY AND THE CENTER LINE OF THE RAILROAD.



PLANNING AND PROFILE
DRAINAGE BASINMENT
SHEET NO. 10-10 TO 11-10-10
MOUNTAIN VALLEY
PHASE 1

1000000 AMERICAN HOMES OF NEVADA, INC.
1000000 AMERICAN HOMES OF NEVADA, INC.
1000000 AMERICAN HOMES OF NEVADA, INC.

DATE: 10-10-10
DRAWN BY: [Name]
CHECKED BY: [Name]
SCALE: 1" = 40'