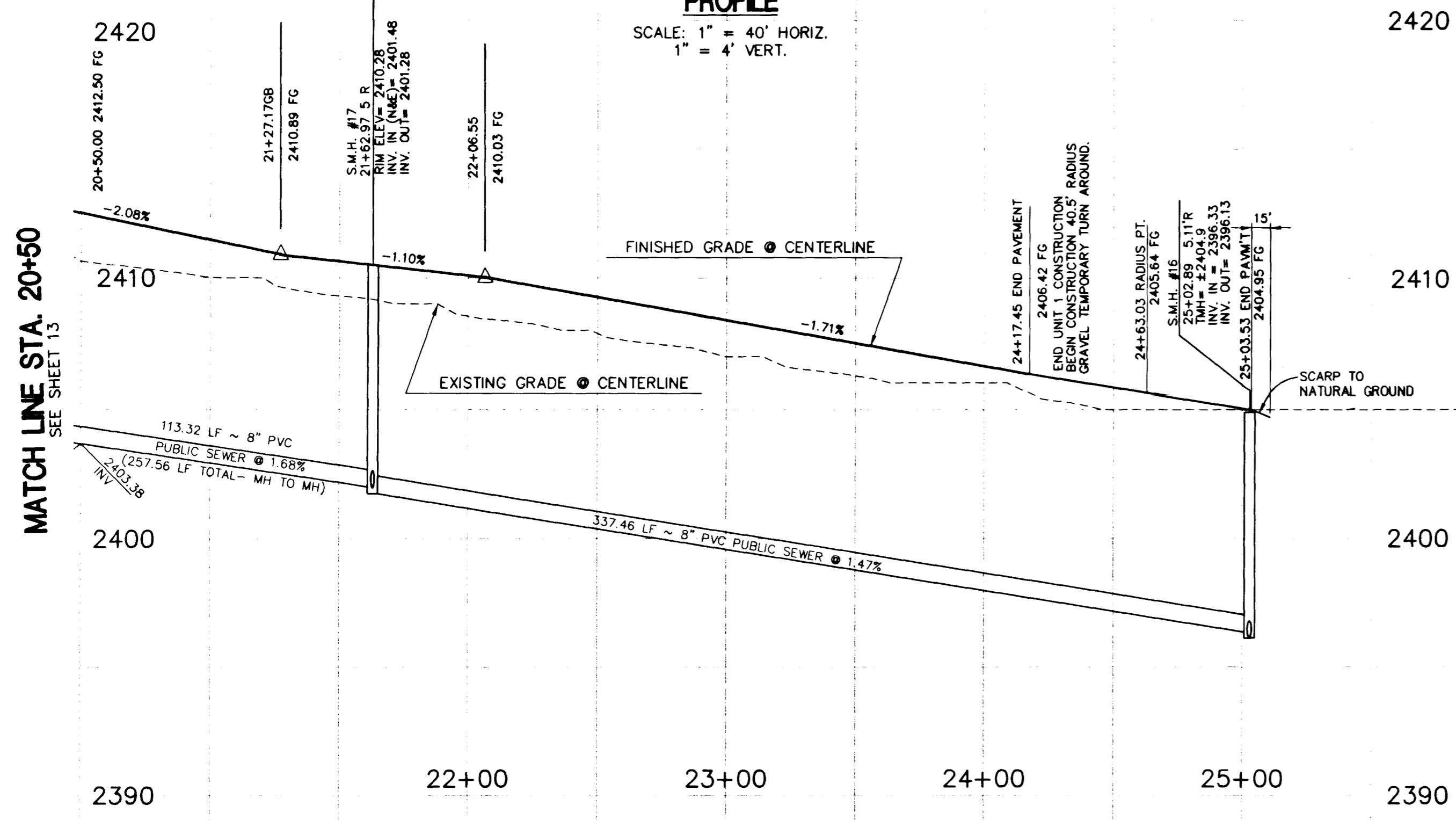


GRAN PARADISO DRIVE

PROFILE

SCALE: 1" = 40' HORIZ.
1" = 4' VERT.

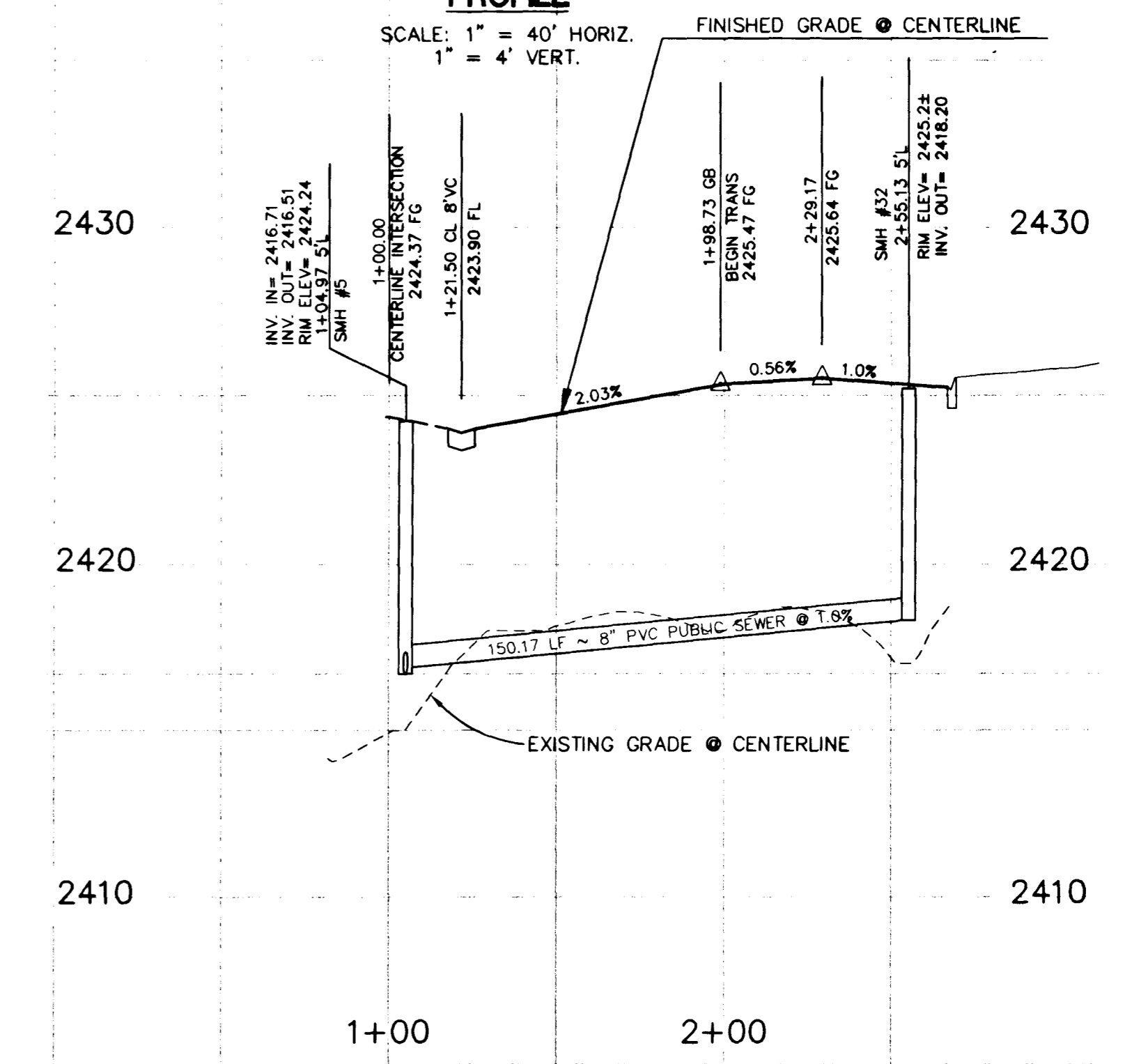


CURVE	DELTA	RADIUS	LENGTH	TANGENT
3	48°20'51"	40.00'	33.75'	17.95'
5	25°37'05"	40.00'	17.88'	9.09'
6	39°54'43"	40.00'	27.86'	14.52'
9	180°00'00"	40.00'	125.66'	---
14	47°41'55"	40.00'	33.30'	17.68'
21	18°25'26"	40.00'	12.86'	6.49'
23	81°22'23"	20.00'	28.40'	17.19'
26	96°58'29"	340.00'	575.46'	384.13'
27	96°58'29"	360.00'	609.31'	406.73'
28	14°30'26"	340.00'	86.09'	43.28'
81	07°25'39"	620.00'	80.37'	40.24'
85	05°14'19"	680.00'	62.17'	31.11'
86	10°35'52"	640.00'	118.38'	59.36'
87	14°08'56"	660.00'	162.98'	81.91'
88	06°51'47"	680.00'	81.45'	40.77'
89	00°03'57"	680.00'	0.78'	0.39'
93	92°00'06"	20.00'	32.11'	20.71'
94	19°32'46"	711.00'	242.55'	122.47'
96	06°30'24"	711.00'	80.74'	40.41'
97	88°31'59"	20.00'	30.90'	19.49'
98	06°28'10"	711.00'	80.28'	40.18'
99	06°34'13"	711.00'	81.53'	40.81'
100	19°32'46"	731.00'	249.38'	125.91'

RENNES COURT

PROFILE

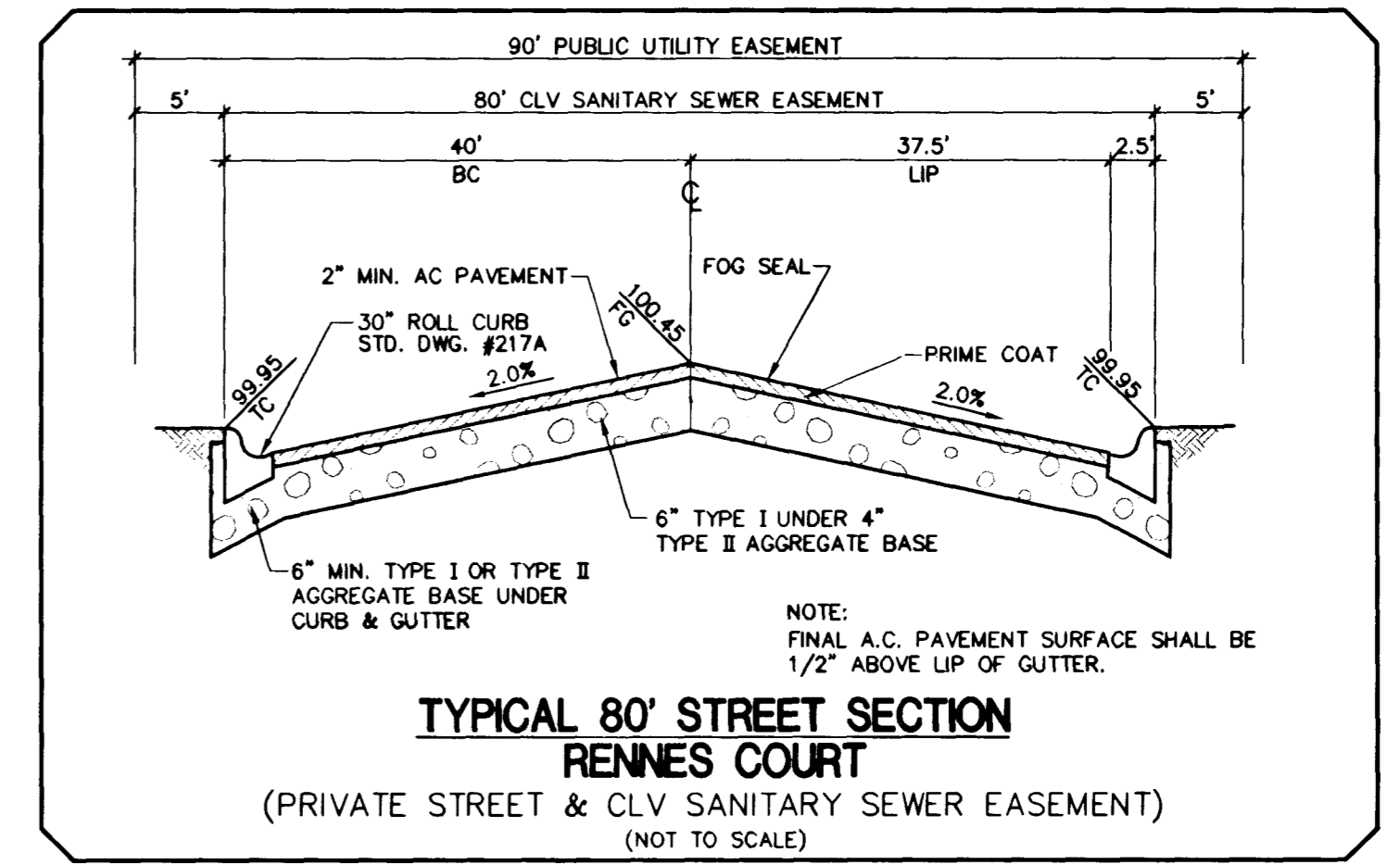
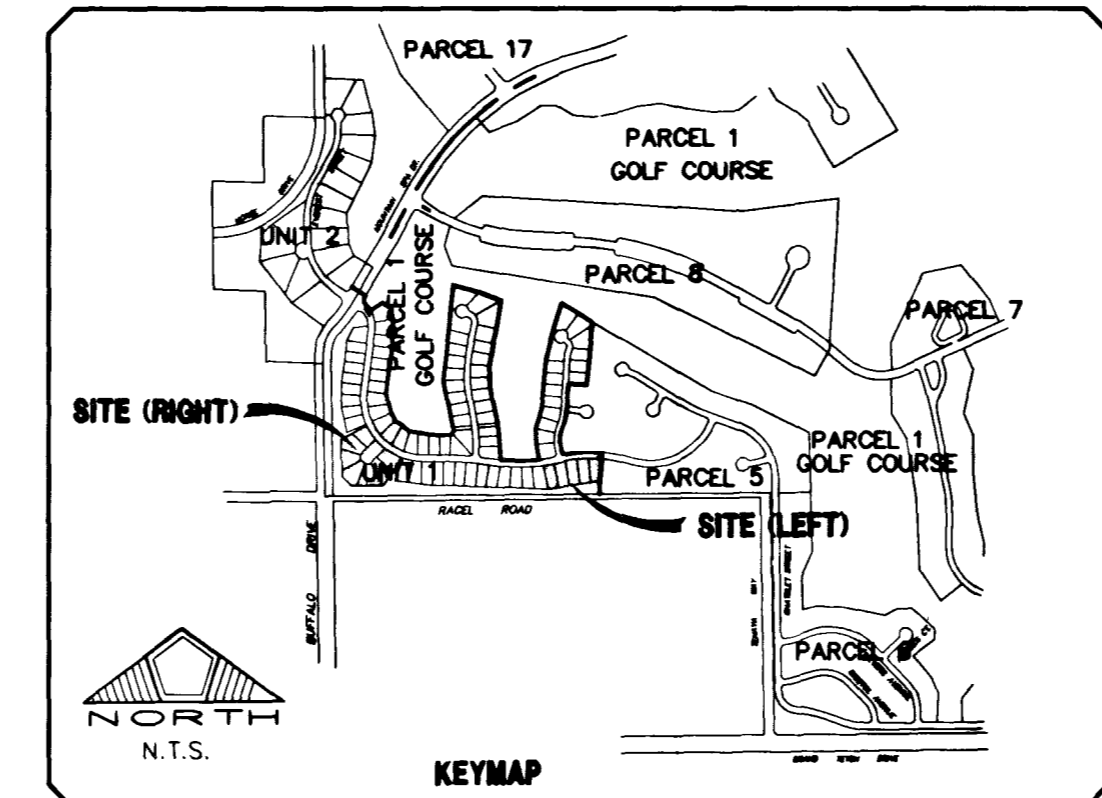
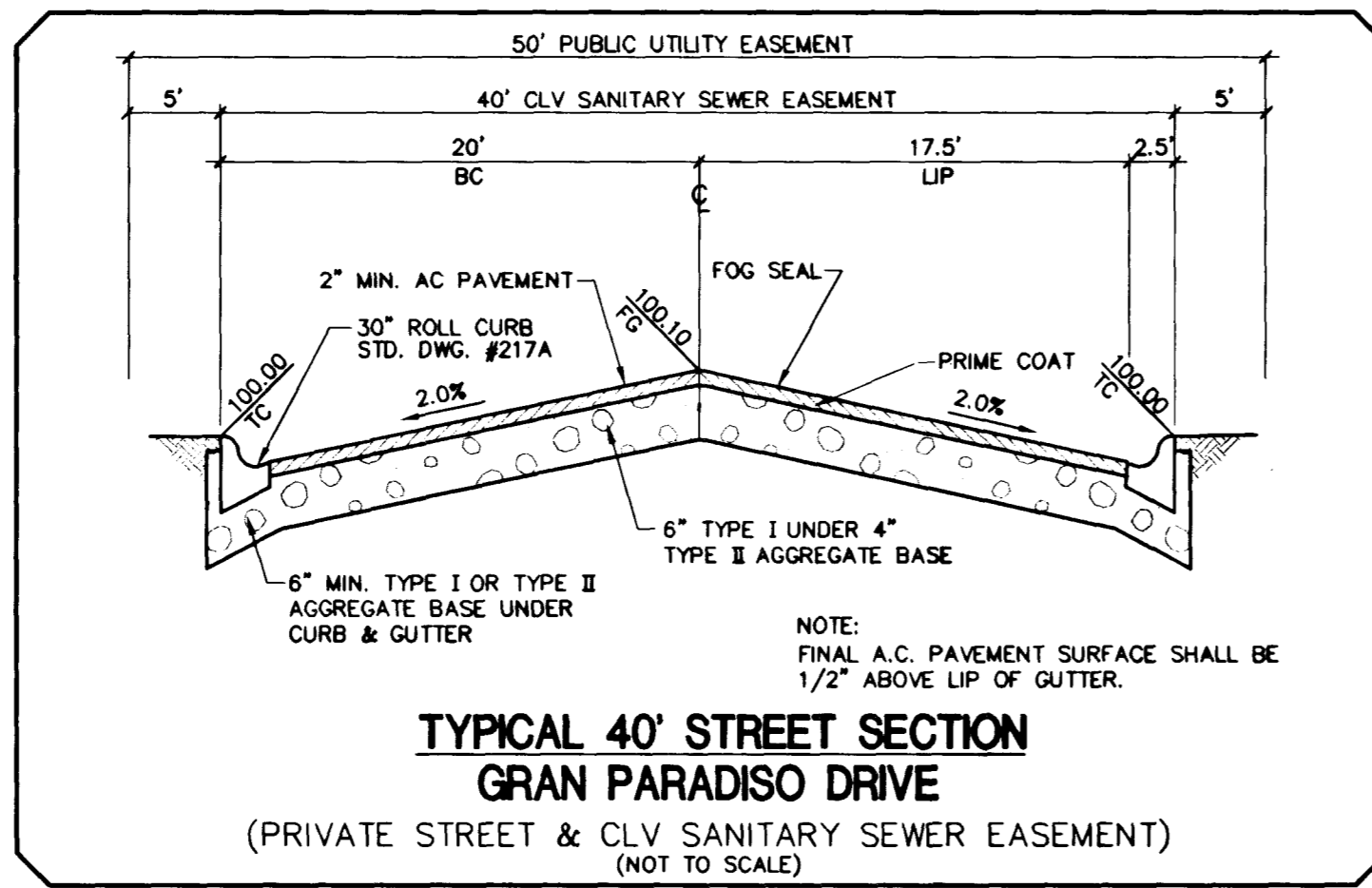
SCALE: 1" = 40' HORIZ.
1" = 4' VERT.



- NOTES**
- ALL STATIONING IS CENTERLINE STATIONING UNLESS OTHERWISE NOTED.
 - ALL SEWER LENGTHS ARE FROM MANHOLE CENTER TO MANHOLE CENTER.
 - CROSS GUTTERS WITH A GRADE OF ONE PERCENT (1%) OR LESS SHALL BE CHECKED FOR GRADE PRIOR TO CONSTRUCTION AND WATER TESTED AS SOON AS POSSIBLE AFTER CONSTRUCTION. IT IS THE RESPONSIBILITY OF THE CONTRACTOR TO ENSURE PROPER DRAINAGE ACROSS ALL CROSS GUTTERS.

TYPICAL WATER/SEWER CROSSING
THE FOLLOWING ARE THE REQUIREMENTS THAT MUST BE MET WHEN THERE IS A WATER-SEWER CROSSING.
WHEN PROTECTION OF THE WATERLINE IS CONSIDERED, A MINIMUM VERTICAL DISTANCE OF 18 INCHES MUST BE MAINTAINED WHEN THE WATER LINE IS INSTALLED OVER THE SEWER/STORM LINE. IF THIS DISTANCE CANNOT BE MAINTAINED BECAUSE OF PHYSICAL OBSTRUCTIONS OR THE WATERLINE MUST BE PLACED UNDER THE SEWER/STORM LINE, THE SEWER/STORM LINE MUST BE ENCASED WITH A MINIMUM OF 4" OF CONCRETE AROUND THE TOTAL PERIMETER OF THE PIPE. THE ENCASEMENT MUST EXTEND FOR 10 FEET ON EACH SIDE OF THE WATERLINE AT 90 DEGREES TO THE CROSSING.

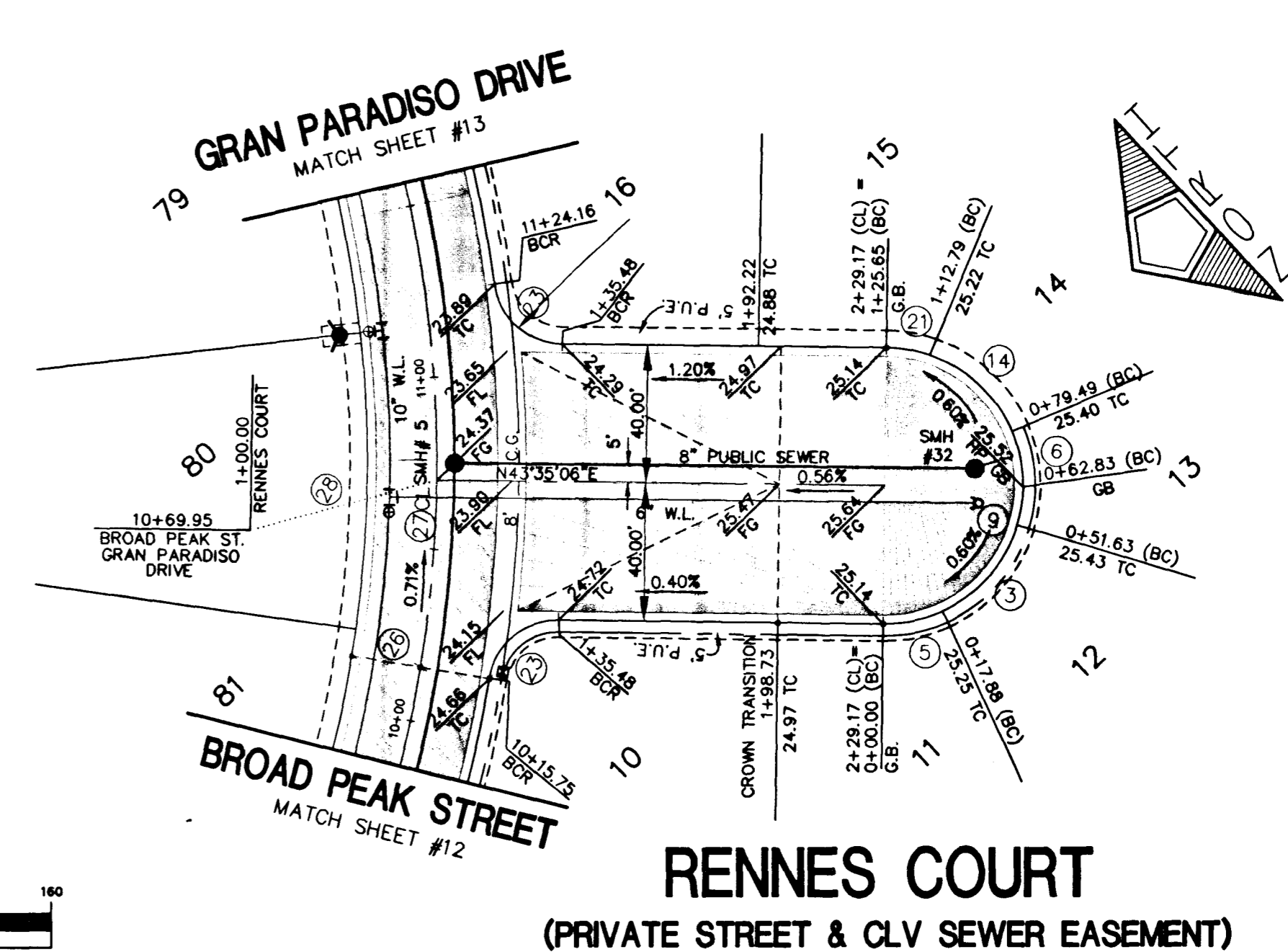
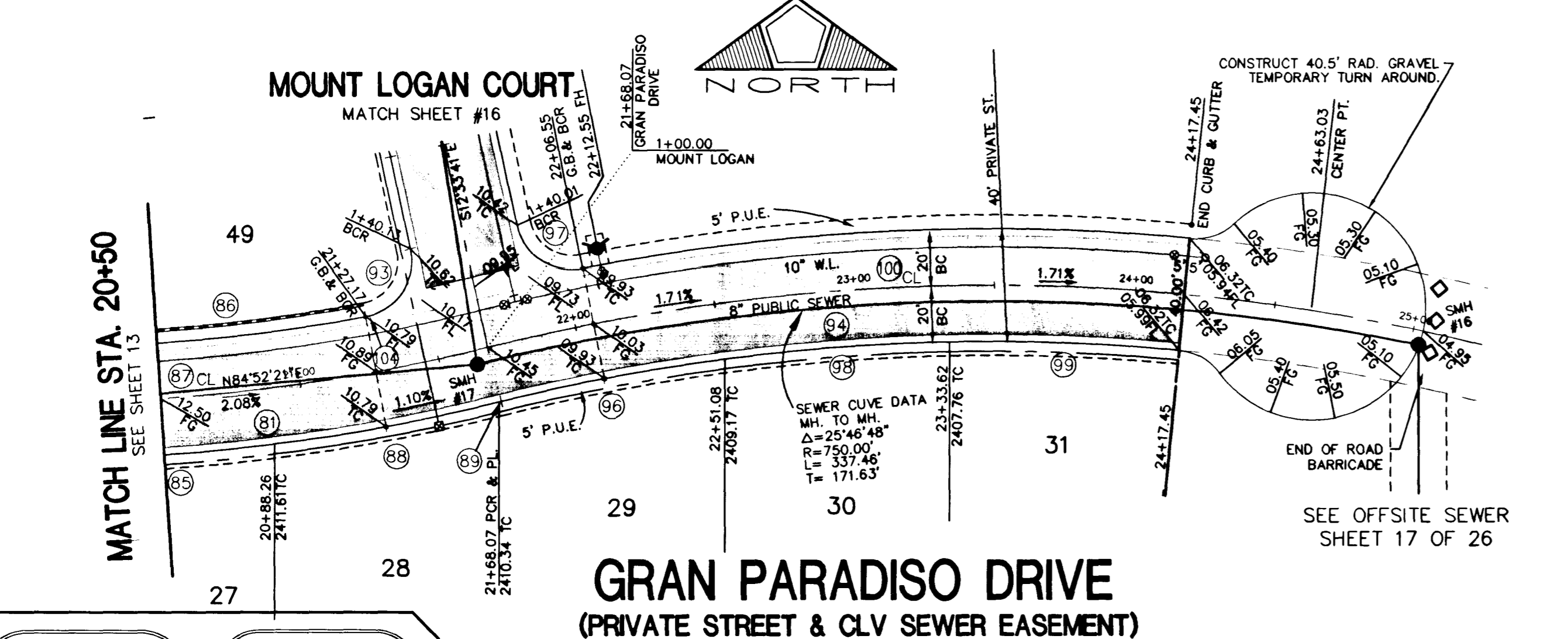
NOTE:
SIDEWALK RAMPS SHALL BE CONSTRUCTED IN EACH QUADRANT OF EACH INTERSECTION PER C.C. STD. DWG. NO. 235, CASE NO. 1
TABLE NO. 1, W/SLOPE AS NOTED (SEE SIDEWALK RAMP DETAIL ON SHEET NO. 6)



BENCHMARK
BLM BRASS CAP #41, RAINBOW BLVD. & HORSE DRIVE. STA. 1LV90/11W4. ELEV. = 2396.994' (NGVD29) USED (ADD 2.41 FEET TO ALL ELEVATIONS TO CONVERT TO NAVD 88 DATUM)

BASIS OF BEARING
SOUTH 00°37'59" EAST, BEARING OF THE EAST LINE OF THE NORTHEAST (N1/4) OF SECTION 10, TOWNSHIP 19 SOUTH, RANGE 60 EAST, M.D.M. AS SHOWN BY A MAP ON FILE IN CLARK COUNTY, NEVADA RECORDER'S OFFICE AS FILE 70, PAGE 15 OF RECORD OF SURVEYS.

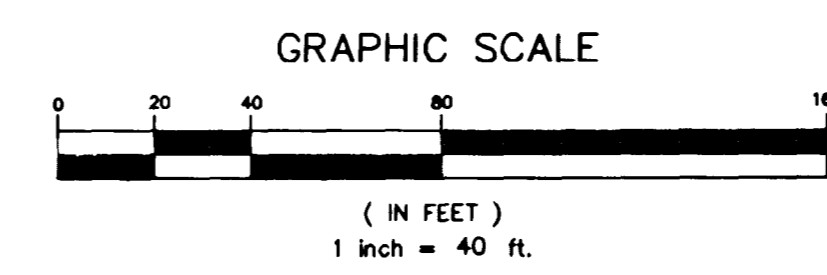
SEWER CONNECTION NOTE:
ONE OR MORE SEGMENTS OF THE DOWNSTREAM SEWER SYSTEM THAT WILL SERVE THIS PROJECT HAS NOT BEEN COMPLETED AND/OR ACCEPTED FOR MAINTENANCE BY THE CITY OF LAS VEGAS. ANY WORK DONE ON THIS PROJECT PRIOR TO THE COMPLETION AND/OR ACCEPTANCE OF THE DOWNSTREAM SEWER SYSTEM(S) SHALL BE DONE AT THE DEVELOPER'S OWN RISK. THE CITY OF LAS VEGAS RESERVES THE RIGHT TO PREVENT THE PHYSICAL CONNECTION OF THIS PROJECT INTO THE DOWNSTREAM SEWER SYSTEM UNTIL ALL SEGMENTS HAVE BEEN COMPLETED AND ACCEPTED FOR MAINTENANCE, OR UNTIL SUCH TIME AS THEY ARE DEEMED AVAILABLE FOR SERVICE.



Call before you Dig.
1-800-227-2600
UNDERGROUND SERVICE (USA)

Call before you OVERHEAD.
1-702-593-6111
NEVADA POWER ENVIRONMENT AND SAFETY SERVICES DEPARTMENT

EXISTING UTILITY LOCATIONS SHOWN HEREIN ARE APPROXIMATE ONLY. IT SHALL BE THE CONTRACTOR'S RESPONSIBILITY TO DETERMINE THE EXACT VERTICAL AND HORIZONTAL LOCATION OF ALL EXISTING UNDERGROUND UTILITIES PRIOR TO COMMENCING CONSTRUCTION. NO REPRESENTATION IS MADE THAT ALL EXISTING UTILITIES ARE SHOWN HEREON. THE ENGINEER ASSUMES NO RESPONSIBILITY FOR UTILITIES NOT SHOWN OR UTILITIES NOT SHOWN IN THEIR PROPER LOCATION. CALL BEFORE YOU DIG: 1-800-227-2600.



MOUNTAIN SPA RESIDENTIAL DEVELOPMENT, LLC.
2810 WEST CHARLESTON BLVD., SUITE F-38
LAS VEGAS, NV 89102
(702) 870-1234

PENTACORE
CIVIL ENGINEERING - LAND SURVEYING - PLANNING
CONSTRUCTION - 676 S. WEST CHARLESTON BOULEVARD
LAS VEGAS, NEVADA 89146
(702) 258-0115

GRAN PARADISO DRIVE AND RENNES COURT
PLAN AND PROFILE

MOUNTAIN SPA
UNIT NO. 1

DATE: OCT. 98
PG. LG
DRAWN BY:
DESIGNED BY:
CHECKED BY:
JOB NO.: 0158.0001
SCALE: 1" = 40'

PROFESSIONAL ENGINEER - STATE OF NEVADA
SAMIH ALHWAYEK
CIVIL
No. 10502

SHEET 14 OF 29
C.L.V. DWG.#

