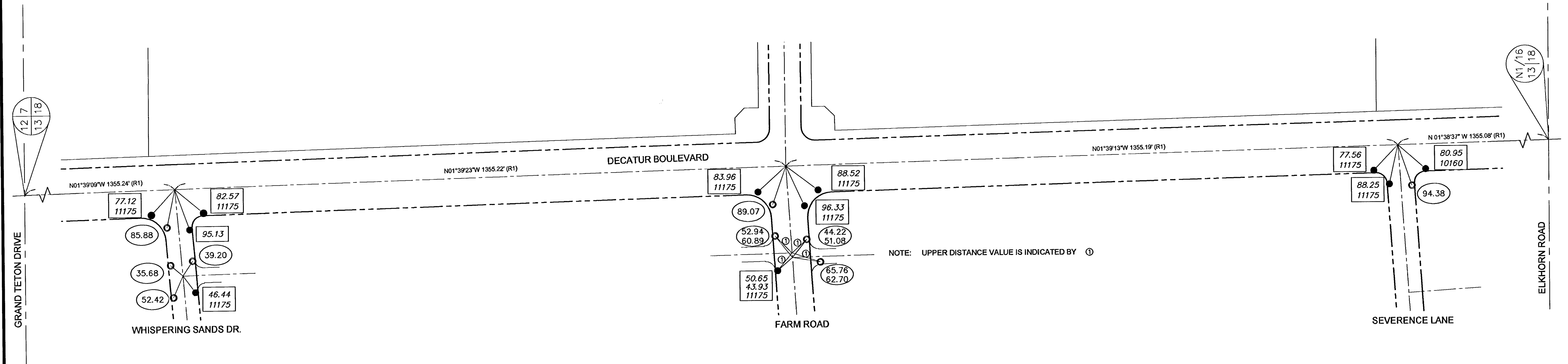
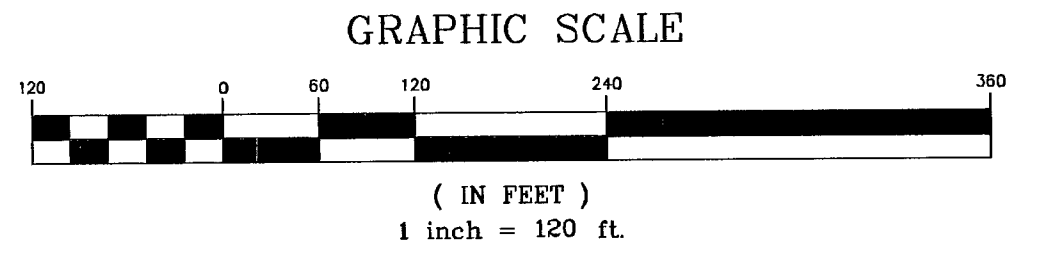
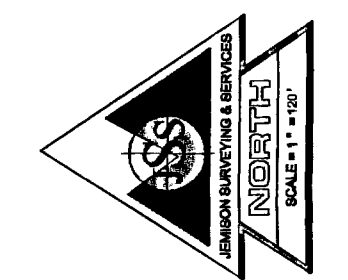


MONUMENT TIE MAP

FOR LAS VEGAS WASH MIDDLE BRANCH IMPROVEMENTS
 DECATUR BLVD. BETWEEN ELKHORN ROAD AND WHISPERING SANDS DRIVE
 SITUATE IN SECTION 13, TOWNSHIP 19 SOUTH, RANGE 60 EAST, AND SECTION 18, TOWNSHIP 19 SOUTH,
 RANGE 61 EAST M.D.M., CITY OF LAS VEGAS, CLARK COUNTY, NEVADA.



NOTE: UPPER DISTANCE VALUE IS INDICATED BY ①



BASIS OF BEARINGS

NORTH 86°14'48" EAST, BEING THE CENTERLINE OF FARM ROAD BETWEEN DECATUR BOULEVARD AND BRADLEY ROAD AS SHOWN IN FILE 174, PAGE 97 OF SURVEYS IN THE OFFICE OF THE RECORDER, CLARK COUNTY, NEVADA.

LEGEND

(NOTE: SOME SYMBOLS HAVE BEEN EXAGGERATED IN SCALE FOR CLARITY)

- 44.52 PLS# REFERENCE MONUMENT UNDISTURBED DURING CONSTRUCTION (TIE DISTANCE AND PLS NUMBER AS STAMPED UNLESS NOTED).
- 44.52 SET TYPE IV REFERENCE MONUMENT PLS 10598 (THE DISTANCE TO CALCULATED CENTERLINE MONUMENT).
- STREET CENTERLINE
- - - RIGHT-OF-WAY
- - - CURB
- NO DIST NO DISTANCE STAMPED
- ILL. ILLEGIBLE
- (R1) REFERENCE PER FILE 174, PG 97 OF SURVEYS

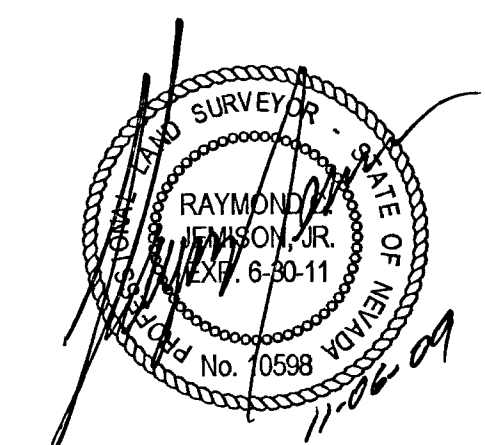
NOTE:
 THE MONUMENTS AS SHOWN AND SET PER THIS MAP IS FOR THE PURPOSE OF REPLACING THOSE REFERENCE MONUMENTS DISTURBED DURING THE CONSTRUCTION OF LAS VEGAS WASH MIDDLE BRANCH STORM DRAIN IMPROVEMENTS, DECATUR BOULEVARD BETWEEN ELKHORN AND WHISPERING SANDS DRIVE ONLY, UNDER CITY OF LAS VEGAS OFF-SITE PERMIT # 27037. CENTERLINE MONUMENTS WERE NOT SET WITH THIS MAP.
 FOR DETAILS OF THE ABUTTING LANDS, REFER TO THE APPROPRIATE PLATS.

SURVEYOR'S CERTIFICATE

I, RAYMOND JEMISON, A PROFESSIONAL LAND SURVEYOR REGISTERED IN THE STATE OF NEVADA, CERTIFY THAT:

1. THIS PLAT REPRESENTS THE RESULTS OF A SURVEY CONDUCTED UNDER MY SUPERVISION AT THE INSTANCE OF: TAB CONTRACTORS, INC., A NEVADA CORPORATION
2. THE LANDS SURVEYED LIE WITHIN THE SECTION 13, TOWNSHIP 19 SOUTH, RANGE 60 EAST AND SECTION 18, TOWNSHIP 19 SOUTH, RANGE 61 EAST, M.D.M., CITY OF LAS VEGAS, CLARK COUNTY, NEVADA, AND THE SURVEY WAS COMPLETED ON OCTOBER 26, 2009.
3. THIS PLAT COMPLIES WITH THE APPLICABLE STATE STATUTES AND ANY LOCAL ORDINANCES IN EFFECT ON THE DATE THAT THE SURVEY WAS COMPLETED AND THAT THIS SURVEY DOES NOT CONSTITUTE A SUBDIVISION AS DEFINED BY NEVADA REVISED STATUTES.
4. THE MONUMENTS DEPICTED ON THE PLAT ARE OF THE CHARACTER SHOWN, OCCUPY THE POSITIONS INDICATED, ARE OF SUFFICIENT DURABILITY AND THE TIE DISTANCES ESTABLISHED AS SHOWN HEREON.
5. THIS PLAT AND THE SURVEY ON WHICH IT IS BASED, MEET POSITIONAL CERTAINTY ACCURACY REQUIREMENTS FOR A LOW URBAN LAND BOUNDARY SURVEY AS DEFINED BY N.A.C. 625.740 N.A.C. 625.666.

RAYMOND JEMISON
 PROFESSIONAL LAND SURVEYOR
 NEVADA REG. NO. 10598



CLV PERMIT # 27037

MONUMENT TIE MAP

LAS VEGAS WASH MIDDLE BRANCH STORM DRAIN IMPROVEMENTS
 DECATUR BOULEVARD BETWEEN ELKHORN AND WHISPERING SANDS
 TAB CONTRACTORS INC.

SITUATE IN SECTION 13, T.19 S., R. 60 E.
 AND SECTION 18, T.19 S., R. 61 E.
 M.D.M., CITY OF LAS VEGAS, CLARK COUNTY, NEVADA.

DATE: OCT. 28, 2009 JOB NUMBER: 253-090410 DWG NAME: LVWASH-TIE-MAP

JEMISON SURVEYING & SERVICES
 2690 CRIMSON CANYON DRIVE
 LAS VEGAS, NEVADA, 89128
 702-360-4838 FAX 702-360-4839